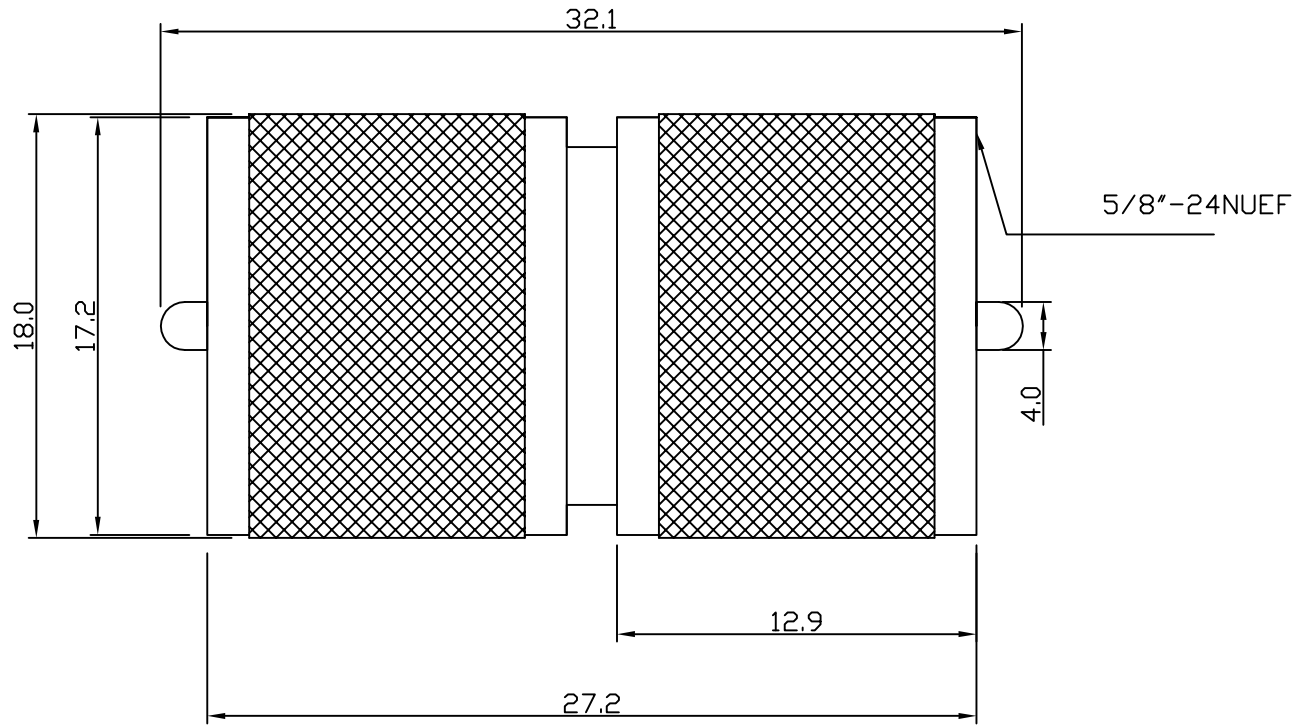


RoHS COMPLIANT



**Electrical Characteristics**

Nominal Impedance: Non Constant  
 Frequency Range: DC to 300 MHz  
 Operating Voltage (rms): 500V maximum at sea level  
 Dielectric Withstand Voltage (rms): 1500V maximum at sea level  
 Contact Resistance: 1.5 milliohms maximum  
 Insulation Resistance: 500 megohms minimum

**Mechanical Characteristics**

Mating Cycles: 500 cycles minimum  
 Interface Dimensions: Conform to MIL-C-39012

**Environmental Characteristics**

Temperature Range: -55 °C to +85 °C

PART	DESCRIPTION
Shell	Brass, Nickel Finish
Body	Brass, Nickel Finish
Pin	Brass, Nickel Finish
Washer	Brass
Insulator	Derlin, White Finish

First Issue	KA	1	24 Oct 07
DESCRIPTION OF REVISION	APPVD	ISS	DATE



Cinch Connectivity Solutions  
 7-13 Russel Way,  
 Widford Industrial Estate,  
 Chelmsford,  
 Essex, CM1 3AA, UK  
 Tel: +44 (0) 1245 359515  
 Fax: +44 (0) 1245 358938

SCALE: Not To Scale

DIMENSIONS: mm

TOLERANCES:  
 ± 0.2mm unless  
 otherwise stated

DRAWN BY:

K Ager

CHECKED BY:

M Spooner

APPROVED BY:

M Spooner

DATE:

24 Oct 07

TITLE:

**UHF PLUG TO PLUG  
 ADAPTOR**

PART NUMBER:

**VUA100**

PAGE: 1 of 1