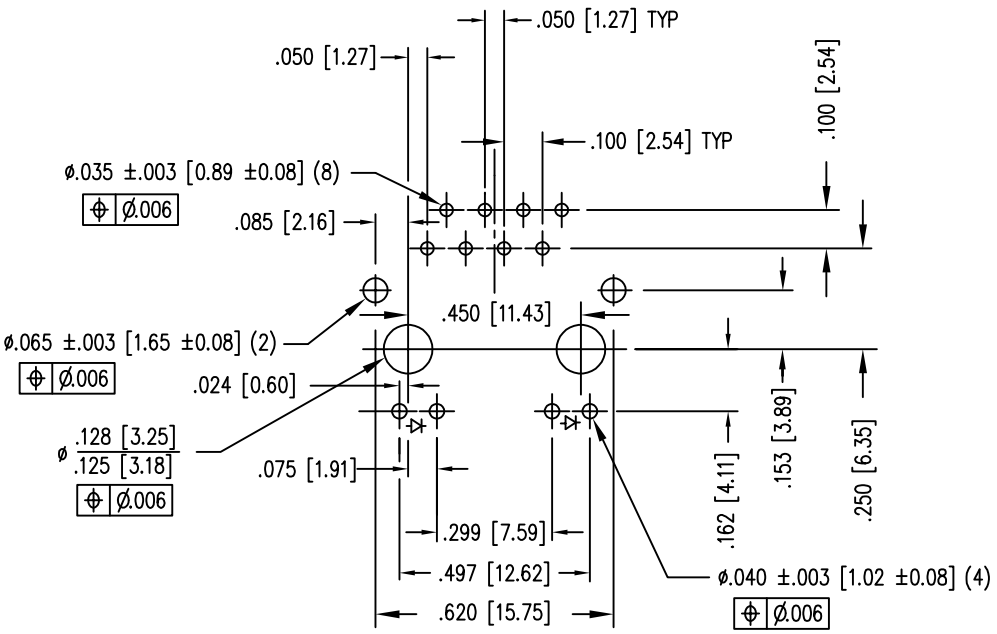


DATE	REV	ECN	APP'D. BY
10-6-16	B3	10780	TRM
10-13-17	B4	11122	TRM

LED SPECIFICATIONS				
LED TYPE	COLOR	WAVELENGTH	FORWARD VOLTAGE (MAX)	* (TYP)
SINGLE COLOR LED	YELLOW DIFFUSED	590 nm	2.5 V	2.1 V
	GREEN DIFFUSED	565 nm	2.5 V	2.2 V
BICOLOR LED	GREEN	565 nm	2.5 V	2.2 V
	ORANGE	610 nm	2.5 V	2.1 V

\* WITH A FORWARD CURRENT OF 20 mA (TYP.)



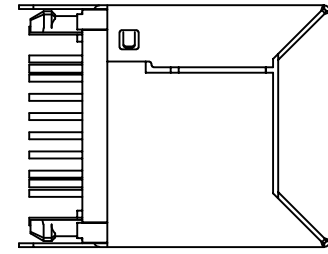
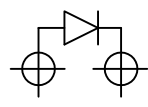
P.C.B. RECOMMENDED HOLE LAYOUT  
SEEN FROM COMPONENT SIDE  
ALL CENTERLINE DIMENSIONS ARE BASIC.

- NOTES:
- CONNECTOR MATERIALS:  
HOUSING: THERMOPLASTIC UL94 V-0  
CONTACTS/SHIELD: COPPER ALLOY  
SHIELD PLATING: TIN  
CONTACT PLATING: SELECTIVE GOLD IN CONTACT AREA  
SEE CHART FOR PART NUMBER
  - FOR PRODUCT SPECIFICATION SEE PRO22-01
  - RATED AT MAX. 260°C FOR MAX. 10 SECS.
  - DIMENSIONS AND TOLERANCES COMPLY WITH TIA-1096 STANDARD.

B

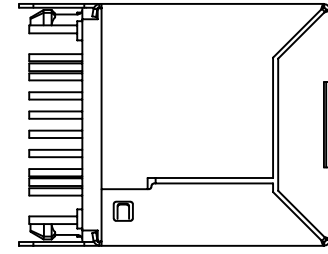
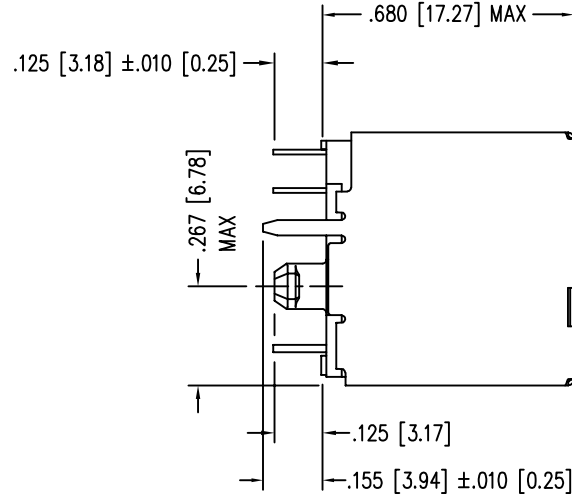
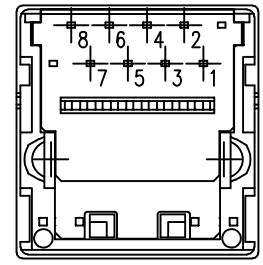
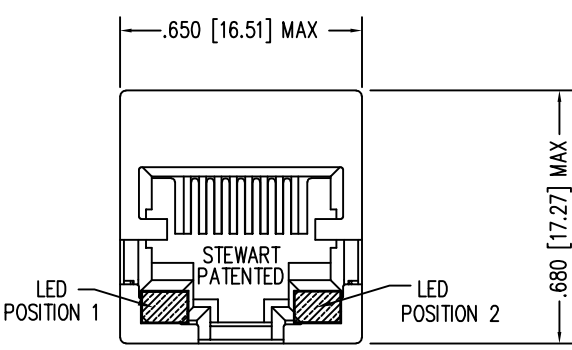
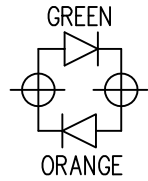
B

SINGLE COLOR LED POLARITY (ENLARGED VIEW)



.060 [1.52]

BICOLOR LED POLARITY (ENLARGED VIEW)

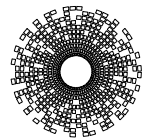
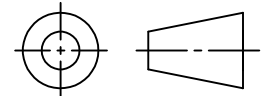


A

A

30 MICRO-INCHES [0.76um]	GREEN	GREEN/ORANGE	SS74301-005F
30 MICRO-INCHES [0.76um]	GREEN	GREEN	SS74301-003F
30 MICRO-INCHES [0.76um]	YELLOW	GREEN	SS74301-002F
30 MICRO-INCHES [0.76um]	GREEN	YELLOW	SS74301-001F
CONTACT PLATING IN MATING AREA	POSITION 1	POSITION 2	PART NUMBER
	INDICATOR COLOR		

THIRD ANGLE PROJECTION



**stewart**  
CONNECTOR  
a bel group

1118 Susquehanna Trail South  
Glen Rock, PA 17327-9199  
(717) 235-7512  
<http://www.stewartconnector.com>

DO NOT SCALE DRAWING  
DRAWING IS SUBJECT TO CHANGE WITHOUT NOTICE

TITLE: EIGHT CONTACT, EIGHT POSITION, VERTICAL MOUNT SHIELDED LED JACK, HI-TEMP

DIMENSIONS: INCHES [METRIC]  
UNLESS OTHERWISE SPECIFIED TOLERANCES ARE ±.005 [0.13] ANGLES ARE ± 1°

THIS DRAWING AND THE SUBJECT MATTER SHOWN THEREON ARE CONFIDENTIAL AND THE PROPRIETARY PROPERTY OF STEWART CONNECTOR AND SHALL NOT BE REPRODUCED, COPIED, OR USED IN ANY MANNER WITHOUT PRIOR WRITTEN CONSENT OF STEWART CONNECTOR. ONE OR MORE U.S. PATENTS MAY APPLY TO THIS PRODUCT. FOR DETAILS, PLEASE VISIT: [HTTP://BELFUSE.COM/STEWART/STEWART\\_PATENTS/](http://BELFUSE.COM/STEWART/STEWART_PATENTS/)

DRN BY:	TRM	DATE	2-12-07
APPD BY:	DHG	DATE	2-12-07
DWG NO.	CT740100F	REV.	B4

SHEET NO. 1 OF 1

