

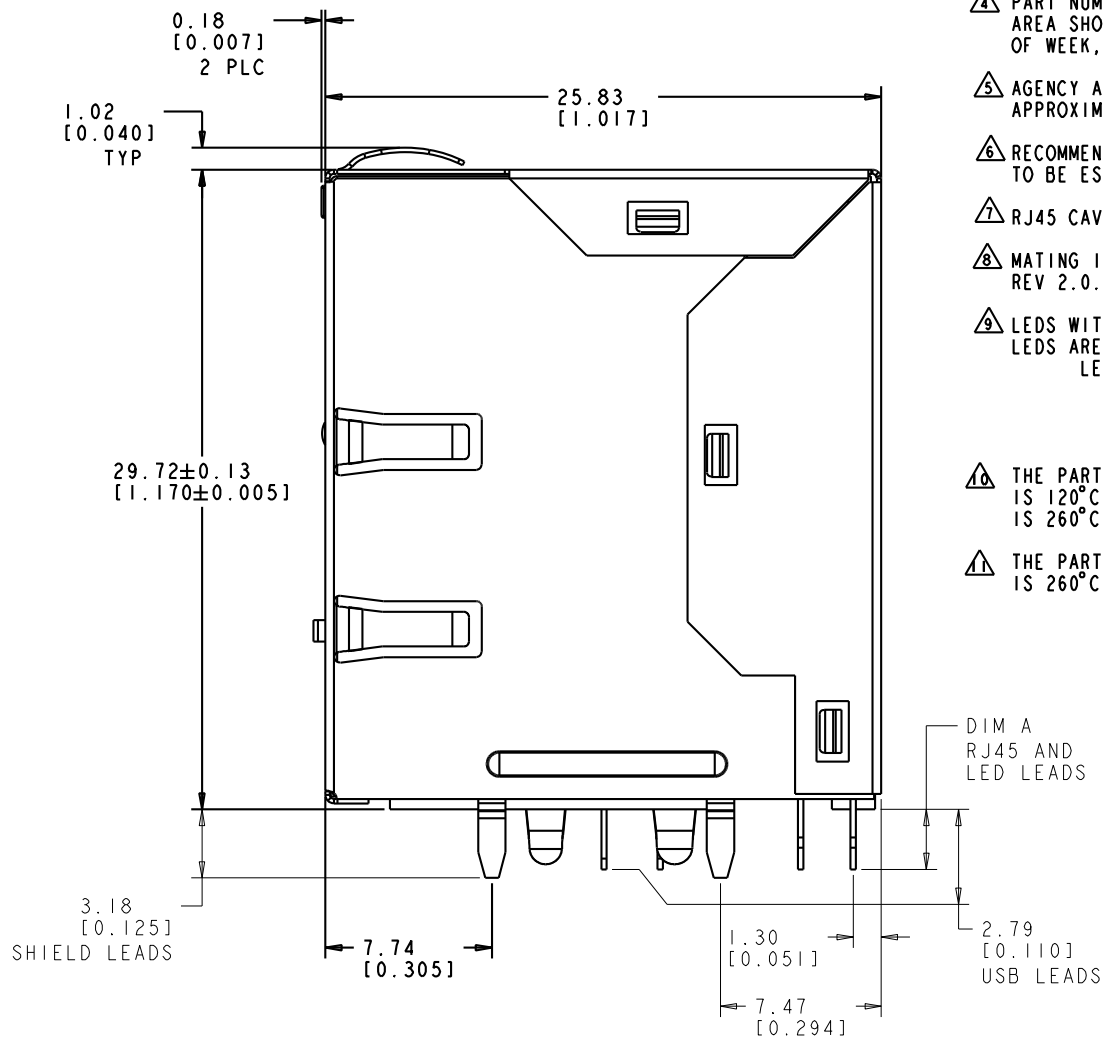
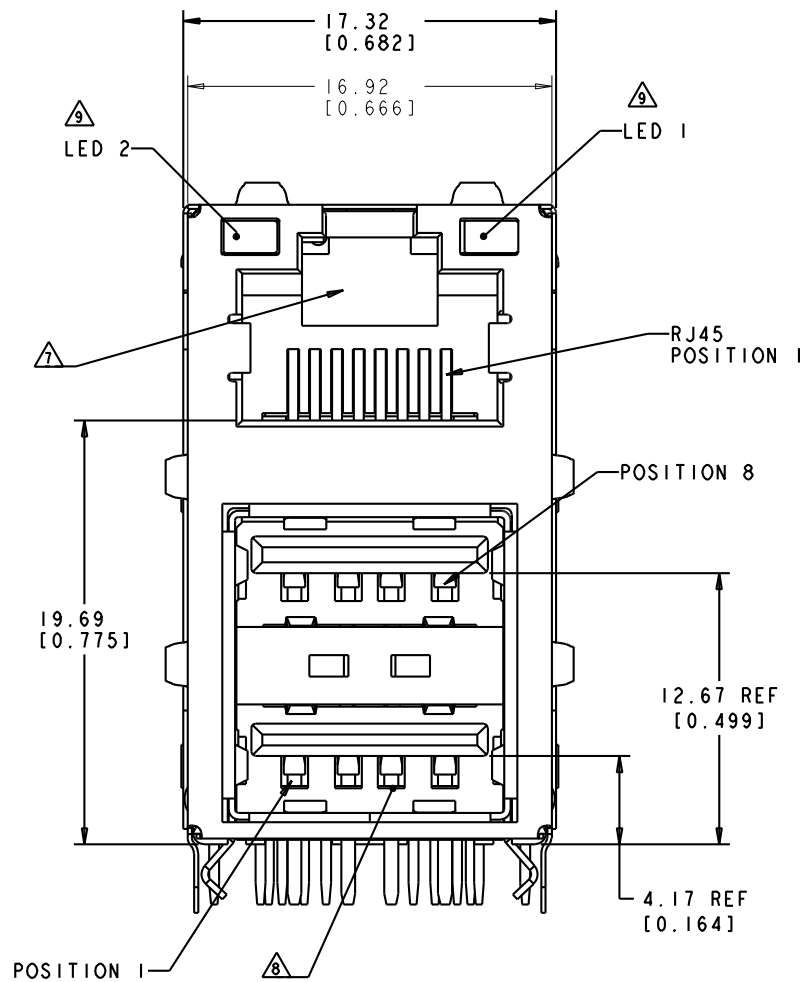
SCALE 4:1

- I. USB MATERIALS:
SHELL: PHOSPHOR BRONZE
HOUSING: BLACK, THERMOPLASTIC, GLASS FILLED, UL 94V-0 RATED
CONTACT: PHOSPHOR BRONZE WITH SELECTIVE 0.76um MIN GOLD PLATING
SPRING CLIP: PHOSPHOR BRONZE
- RJ45 MATERIALS:
HOUSING: BLACK, THERMOPLASTIC FLAMMABILITY RATING UL 94V-0
SHIELD: BRASS, PREPLATED WITH 0.76um SEMI-BRIGHT NICKEL, POST DIPPED WITH 2.54um MIN SAC SOLDER ON SOLDER TAILS.
CONTACTS: PHOSPHOR BRONZE, 0.30mm THK, 1.27um MIN OVERALL NICKEL UNDERPLATE WITH SELECT 1.27um MIN GOLD AT MATING INTERFACE AND 2.54um MIN MATTE TIN AND/OR SAC SOLDER ON SOLDER TAILS.
- LED: DIFFUSED EPOXY LENS, 0.5 X 0.5 CARBON STEEL WIREFRAME
LEADS PREPLATED WITH 2.03um MIN SILVER OVER 1.02um MIN NICKEL UNDERPLATE OVER 1.02um COPPER UNDERPLATE. POST-PLATED WITH 2.54um MIN MATTE TIN AND/OR SAC SOLDER DIP OR PURE TIN SOLDER DIP.

2. MAGNETICS
-APPLICATION : 10/100/1000 BASE-T
-IMPEDANCE: 100 OHMS
-TURNS RATIO(CHIP:CABLE): 1:1 ALL FOUR PAIRS
-OPEN CIRCUIT INDUCTANCE(OCIL): 350uH MIN @100kHz, 0.1 VRMS, 8mADC BIAS FROM -40°C TO 85°C, ALL FOUR PAIRS
-RISE TIME (10%-90%): 2.5ns TYPICAL;
-ALL FOUR PAIRS BI-DIRECTIONAL
-PERFORMANCE @ 25°C:
 INSERTION LOSS (IL): 1.1 dB MAX FROM 0.5MHz TO 100MHz
 RETURN LOSS (RL): 18dB MIN FROM 0.5MHz TO 40MHz
 12-20LOG(f/80)dB MIN FROM 40.1 MHz TO 100MHz
 CROSSTALK ATTENUATION: 35 dB MIN FROM 0.5 MHz TO 40 MHz
 33-20LOG(f/50) dB MIN FROM 40.1 MHz TO 100 MHz
 COMMON MODE REJECTION RATIO (CMRR): 30dB MIN FROM 0.5MHz TO 100MHz
-ISOLATION VOLTAGE: COMPLIES WITH IEEE802.3 2002, PARA 40.6.1.1, ITEM b.


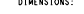
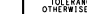
3. OPERATING TEMPERATURE: -40°C TO 85°C.

4. PART NUMBER, DATE CODE AND COUNTRY OF ORIGIN TO BE LOCATED IN APPROXIMATE AREA SHOWN. DATE CODE: YYWWD "YY" IS YEAR, "WW" IS WORK WEEK, "D" IS DAY OF WEEK, WITH SUNDAY=1.
5. AGENCY APPROVAL LOGO, TRP CONNECTOR LOGO AND PRODUCT LOGO LOCATED IN APPROXIMATE AREA SHOWN.
6. RECOMMENDED PCB THICKNESS 1.5mm (.062") THICK. DATUM LOCATION AND DIMENSION TO BE ESTABLISHED BY CUSTOMER.
7. RJ45 CAVITY CONFORMS TO FCC RULES AND REGULATION PART 68 SUBPART F.
8. MATING INTERFACE COMPLIES WITH USB (UNIVERSAL SERIAL BUS) SPECIFICATION REV 2.0.
9. LEDS WITHOUT BUILT-IN RESISTOR
LEDS ARE DRIVEN WITH CONSTANT CURRENT AT APPROX 20 mA
LED COLOR: DOMINANT WAVELENGTH (λD): GREEN 568 nm TYP @ IF=20 mA
FORWARD VOLTAGE (VF): GREEN 2.2V TYP @ IF=20 mA
DOMINANT WAVELENGTH (λD): ORANGE 605 nm TYP @ IF=20 mA
FORWARD VOLTAGE (VF): GREEN 2.1V TYP @ IF=20 mA
10. THE PART IS RECOMMENDED FOR WAVE SOLDERING PROCESS, PREHEAT TEMPERATURE IS 120°C TO 160°C, 120 SECONDS TO 180 SECONDS, PEAK WAVE SOLDERING TEMPERATURE IS 260°C MAX, 10 SECONDS MAX.
11. THE PART IS RECOMMENDED FOR IR REFLOW SOLDERING PROCESS, PEAK SOLDERING TEMPERATURE IS 260°C MAX, DURATION TIME IS 10 SECONDS MAX, OVER 230°C WITHIN 40-60 SECONDS



	VACUUM TRAY	FIGURE 2	GREEN/ORANGE	GREEN	3-2250107-9
	TRAY	FIGURE 2	GREEN/ORANGE	GREEN	2-2250107-9
	TRAY	FIGURE 1	GREEN/ORANGE	GREEN	1-2250107-9
	SOLDERING PROCESS	PACKAGE METHOD	LED CONFIGURATION	LED 2	LED 1
	PART NUMBER				

THIS DRAWING IS A CONTROLLED DOCUMENT.		OWN: PAUL PENG/JARGUS SHI CHK: QUENTIN LIU APVD: TONY XUAN DATE: 19JUL2013		trp CONNECTOR a bel group DONGGUAN CHINA	
DIMENSIONS: mm		TOLERANCES UNLESS OTHERWISE SPECIFIED:		DESC: MAGJACK OVER DUAL USB	
		0 PLC ±0.25 1 PLC ±0.25 2 PLC ±0.25 3 PLC ±0.25 4 PLC ±0.25		SIZE: CAGE CODE: DRAWING NO: A1	
PRODUCT SPEC		APPLICATION SPEC		RESTRICTED TO: -	
		MAGJACK OVER USB NON-PoE		SCALE: 6:1 SHEET: 1 OF 2 REV: 4	
		CUSTOMER DRAWING			

THIS DRAWING IS A CONTROLLED DOCUMENT.		DWN 19 JUL 2013 PAUL PENG/ARGUS SHI CHA 19 JUL 2013 QUENTIN LIU APFD 19 JUL 2013 CONG YUAN		 trp CONNECTOR a bel group		DONGGUAN CHINA	
DIMENSIONS: mm		TOLERANCES UNLESS OTHERWISE SPECIFIED: 0 PLC ±0.25 1 PLC ±0.25 2 PLC ± 3 PLC ± 4 PLC ± ANGLES ±0.5		MODEL NAME MAGJACK		DESC MAGJACK OVER DUAL USB URG47P9ET, GIGABIT CIRCUIT, W/ LEDS	
				SIZE OVER USB NON-POE		CASE CODE A1	
PRODUCT SPEC		APPLICATION SPEC		DRAWING NO C=2250107		RESTRICTED TO	
-		-		SCALE 6:1		SHEET 2 of 2 REV 4	
CUSTOMER DRAWING							