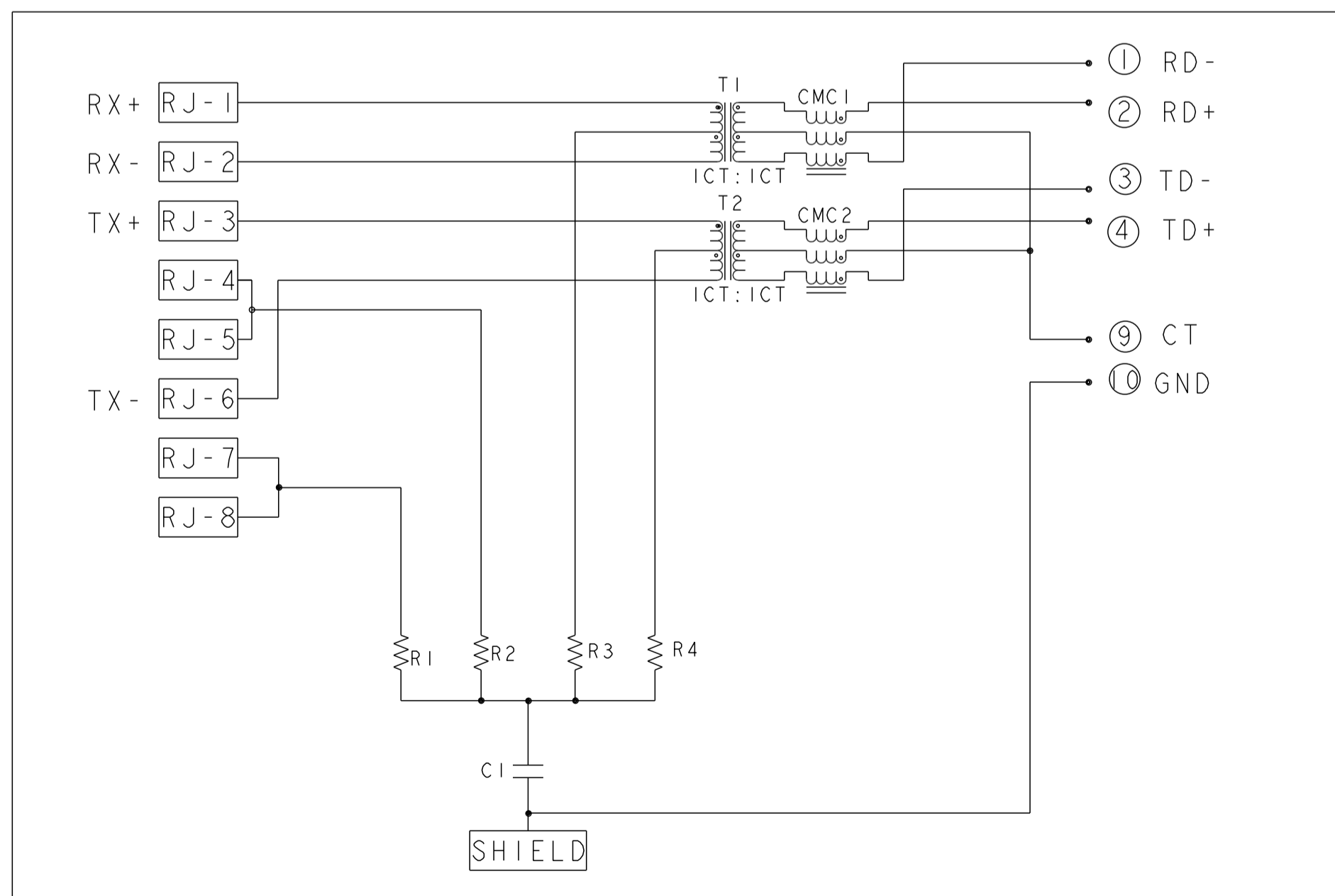
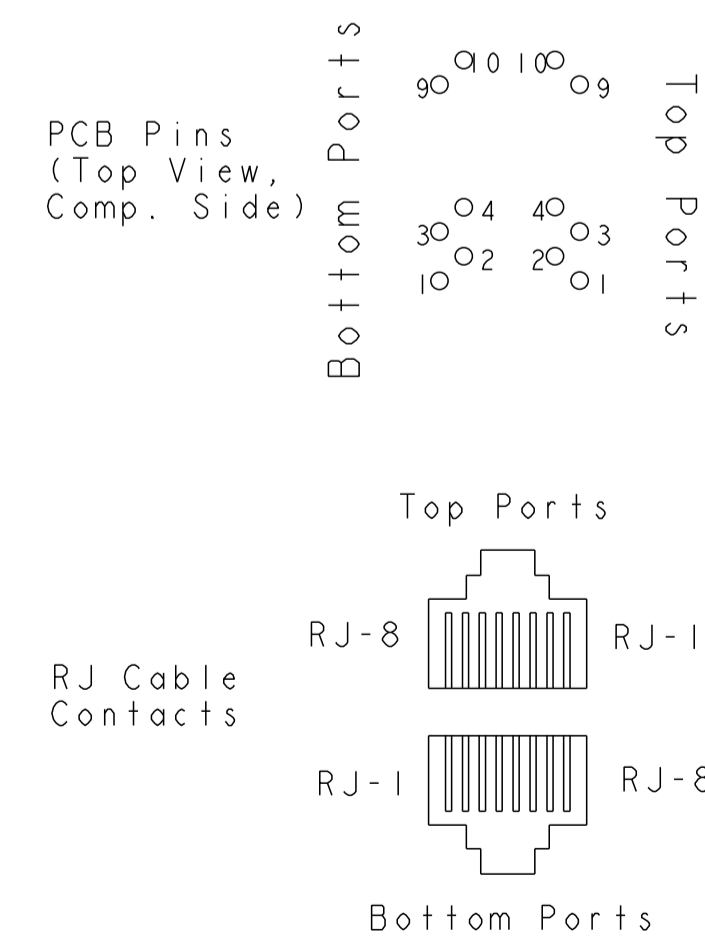


S843P2 10/100 CIRCUIT  $\Delta\Delta$   
TOP AND BOTTOM PORTS



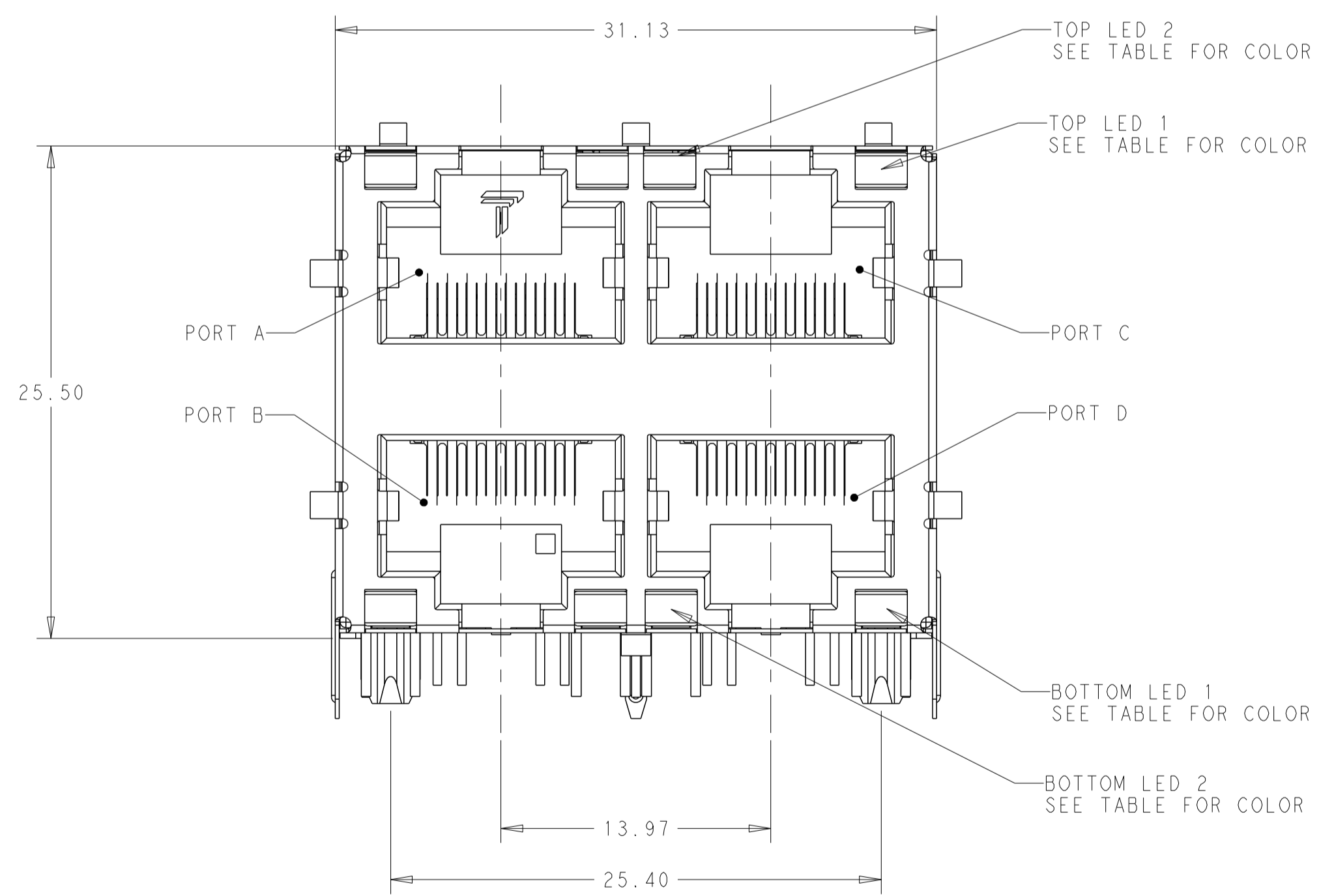
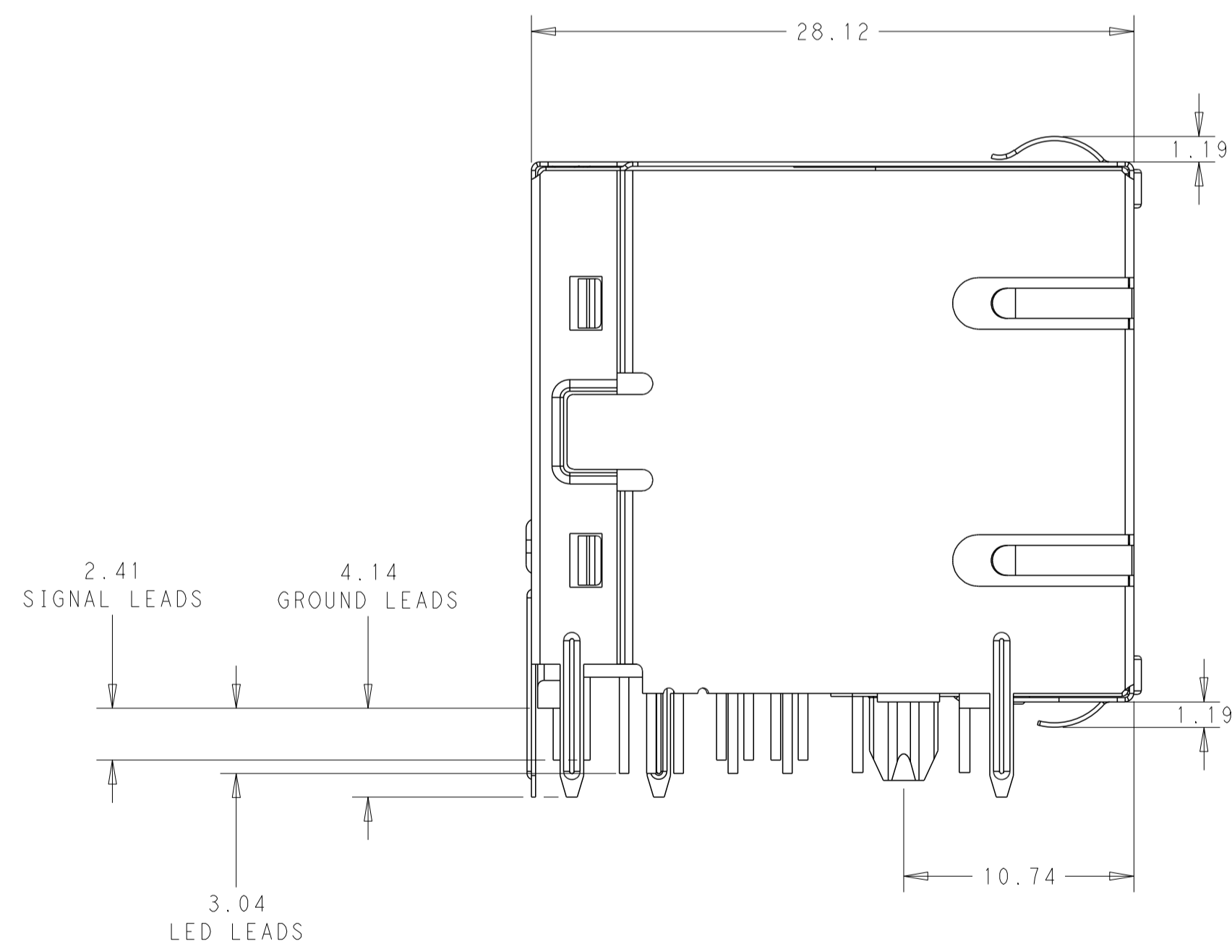
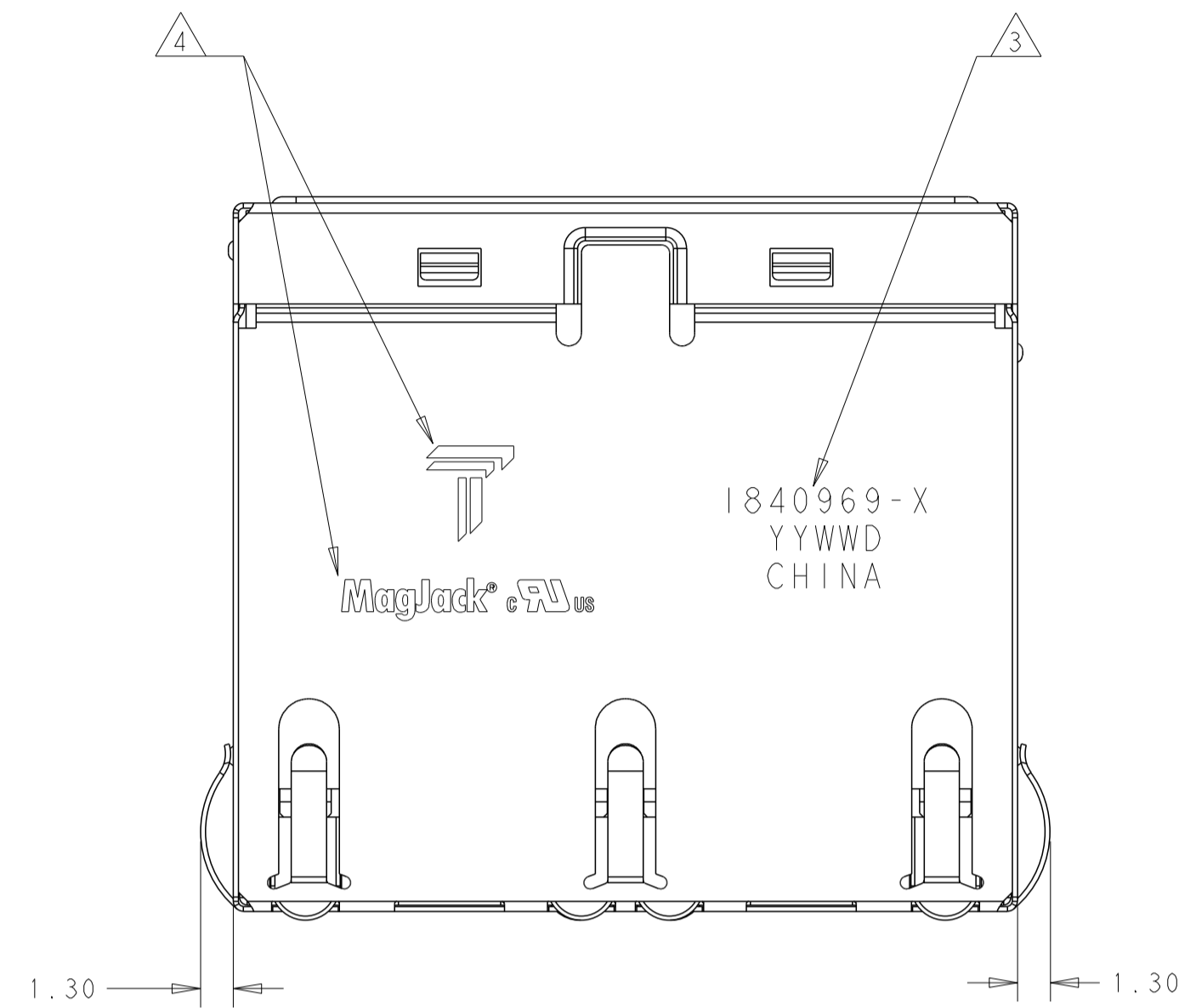
C1 = 1000PF, 3KV,  $\pm 10\%$ , X7R  
R1-R4 = 75 OHM, 1/16 W,  $\pm 5\%$

Pin Designations  
(Repeat for each vertical pair of ports.)

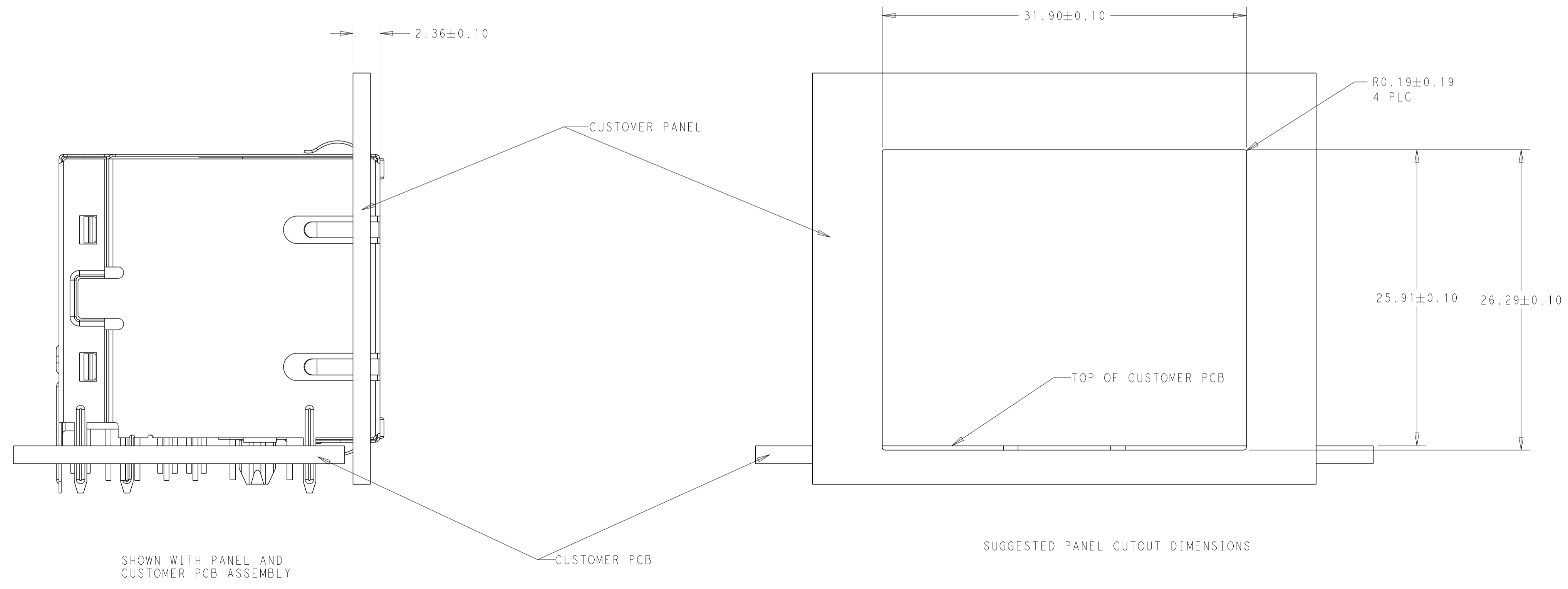
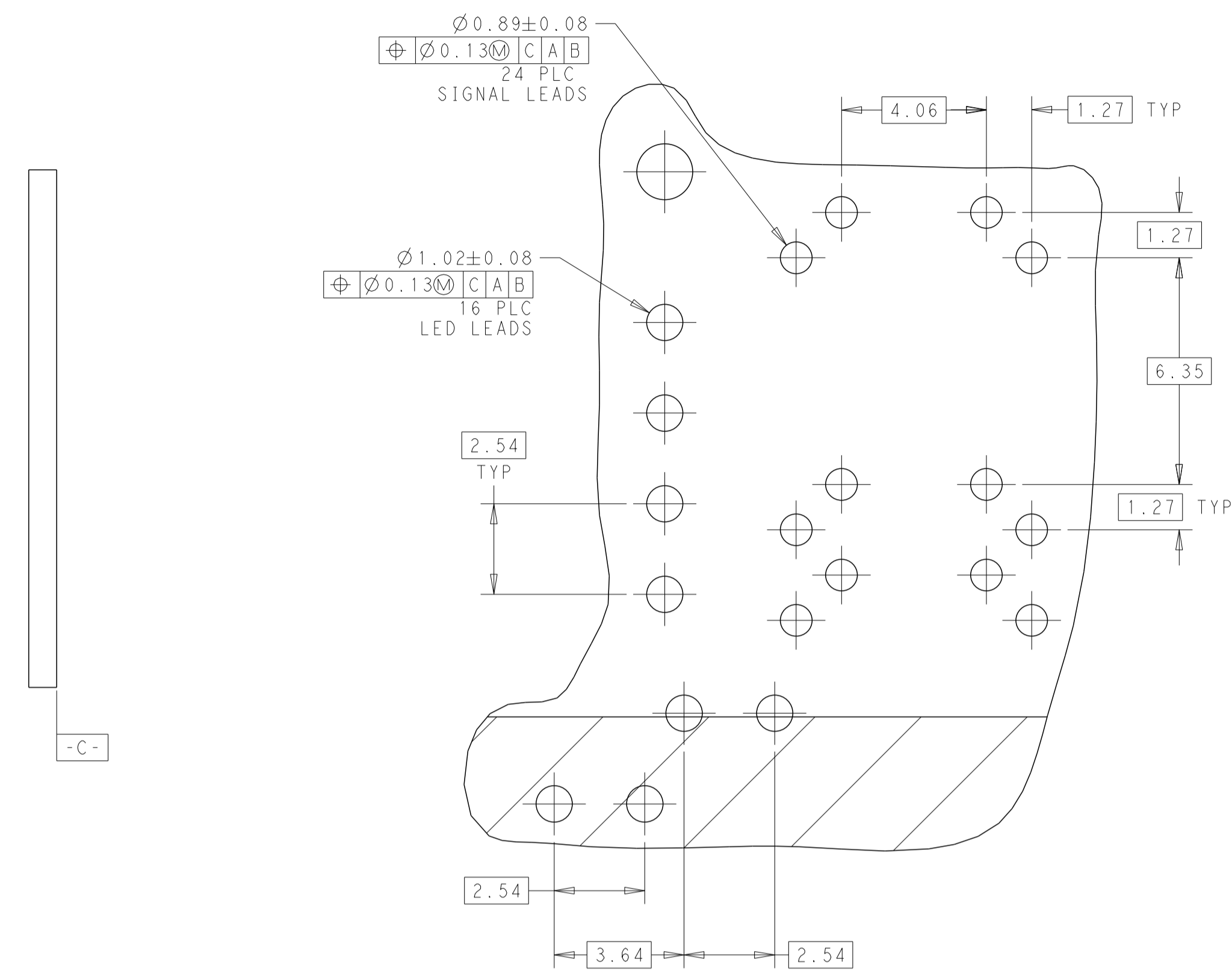
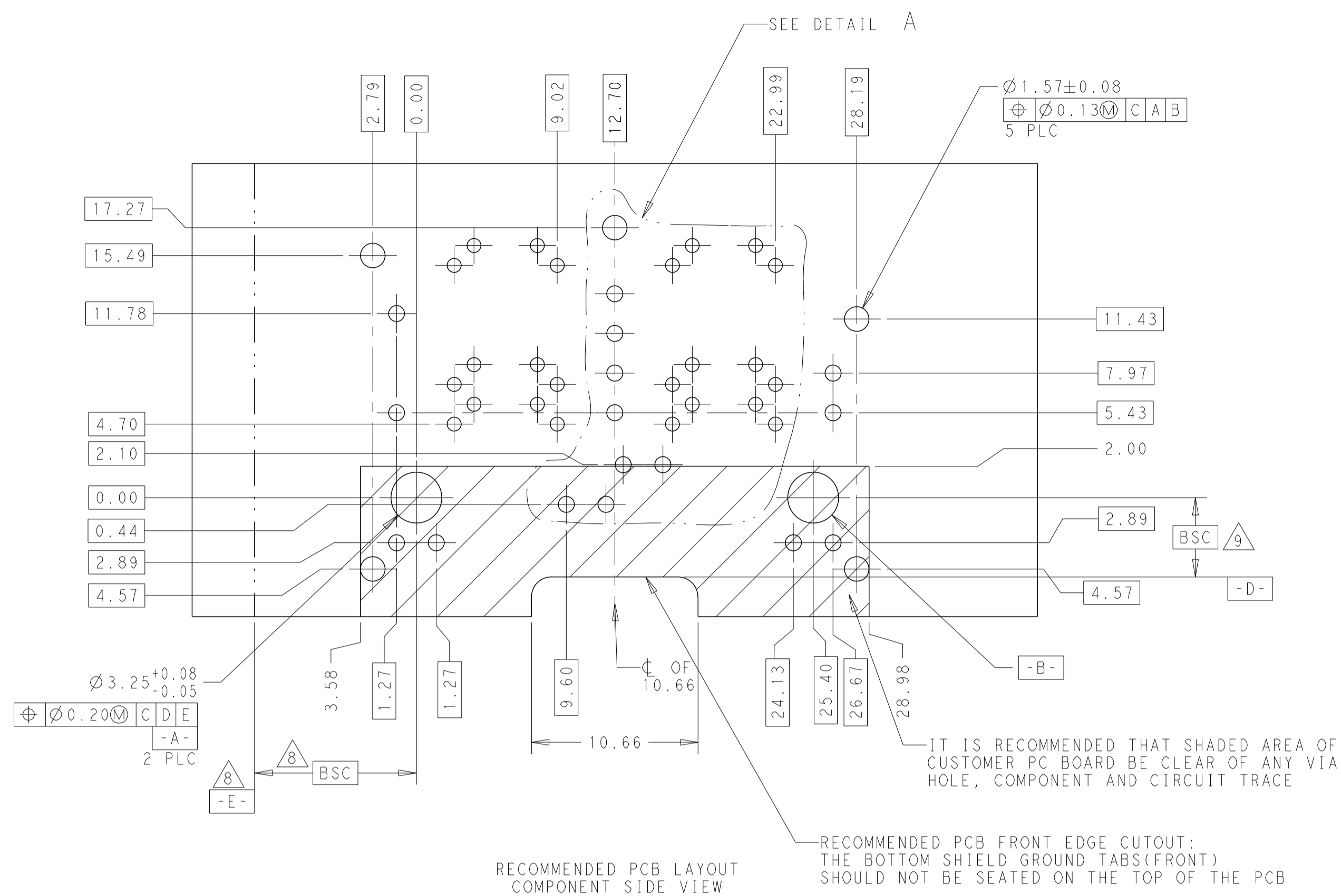


1. MATERIALS:  
PLASTIC HOUSING: BLACK, THERMOPLASTIC FLAMMABILITY RATING UL 94V-0  
SHIELD: BRASS, PREPLATED WITH 0.76um MIN SEMI-BRIGHT NICKEL,  
POST DIPPED WITH 2.54um MIN SAC SOLDER ON SOLDER TAILS,  
CONTACTS: PHOSPHOR BRONZE, 1.27um MIN OVERALL NICKEL  
UNDERPLATE WITH SELECTED 1.27um MIN GOLD AT MATING INTERFACE  
AND 2.54um MIN MATTE TIN ON SOLDER TAILS.  
LED: DIFFUSED EPOXY LENS, CARBON STEEL LEAD FRAME TAILS OF LED  
ARE PREPLATED WITH 2.03um MIN SILVER OVER 1.02um MIN NICKEL  
UNDERPLATE OVER 1.02um MIN COPPER UNDERPLATE. POST-PLATED WITH  
2.54um MIN MATTE TIN AND/OR SAC SOLDER DIP OR PURE TIN SOLDER DIP
2. MAGNETICS  
APPLICATION: 10/100 BASE-T  
IMPEDANCE: 100 OHMS  
TURNS RATIO (CHIP:CABLE): TX = 1:1, RX = 1:1  
OPEN CIRCUIT INDUCTANCE (OCL): 350uH MIN @100kHz, 0.1VRMS,  
8mADC BIAS FROM 0°C TO 70°C, TX AND RX  
PERFORMANCE @ 25°C:  
INSERTION LOSS (IL): 1.1dB MAX FROM 0.5MHz TO 100MHz  
RETURN LOSS (RL): 18dB MIN FROM 0.5MHz TO 30MHz  
18-20LOG(f/30)dB MIN FROM 30.1MHz TO 60MHz  
12dB MIN FROM 60.1MHz TO 80MHz  
CROSSTALK ATTENUATION: 35dB MIN FROM 0.5MHz TO 40MHz  
33-20LOG(f/50)dB MIN FROM 40.1MHz TO 100MHz  
COMMON MODE REJECTION RATIO (CMRR): 30dB MIN FROM 0.5MHz TO 100MHz  
ISOLATION VOLTAGE: 2250VDC (MAX) FOR 60 SECONDS WITH A RISE TIME OF  
500V/SEC AND WITH ALL PORTS CONNECTED.
3. PART NUMBER, DATE CODE AND COUNTRY OF ORIGIN ARE  
LOCATED IN APPROXIMATE AREA SHOWN. "YY" IS YEAR, "WW" IS WORK WEEK, "D"  
IS DAY OF WEEK, WITH SUNDAY="1".
4. TRP LOGO AND AGENCY APPROVAL LOGO ARE LOCATED IN APPROXIMATE AREA SHOWN.
5. OPERATING TEMP: FROM 0°C TO +70°C.
6. RJ45 CAVITY CONFORMS TO FCC RULES AND REGULATION PART 68 SUBPART F.
7. INDICATED MAGNETIC CONNECTIONS ARE SYMMETRICAL AND  
SUPPORT AUTO-MDI/MDIX.
8. DATUM AND BASIC DIMENSION ESTABLISHED BY CUSTOMER.
9. BASIC DIMENSION ESTABLISHED BY CUSTOMER, BUT MAY NOT BE  
GREATER THAN 5.08mm.
10. LEDS ARE DRIVEN WITH CONSTANT CURRENT AT APPROX 20mA  
LED COLOR: DOMINANT WAVELENGTH ( $\lambda_D$ ): GREEN 568 nm TYP. @ IF=20mA  
FORWARD VOLTAGE (VF): GREEN 2.2V TYP. @ IF=20mA
11. THE PARTS ARE RECOMMENDED FOR WAVE SOLDERING PROCESS,  
PEAK TEMPERATURE 260°C MAX, 10 SECONDS MAX.

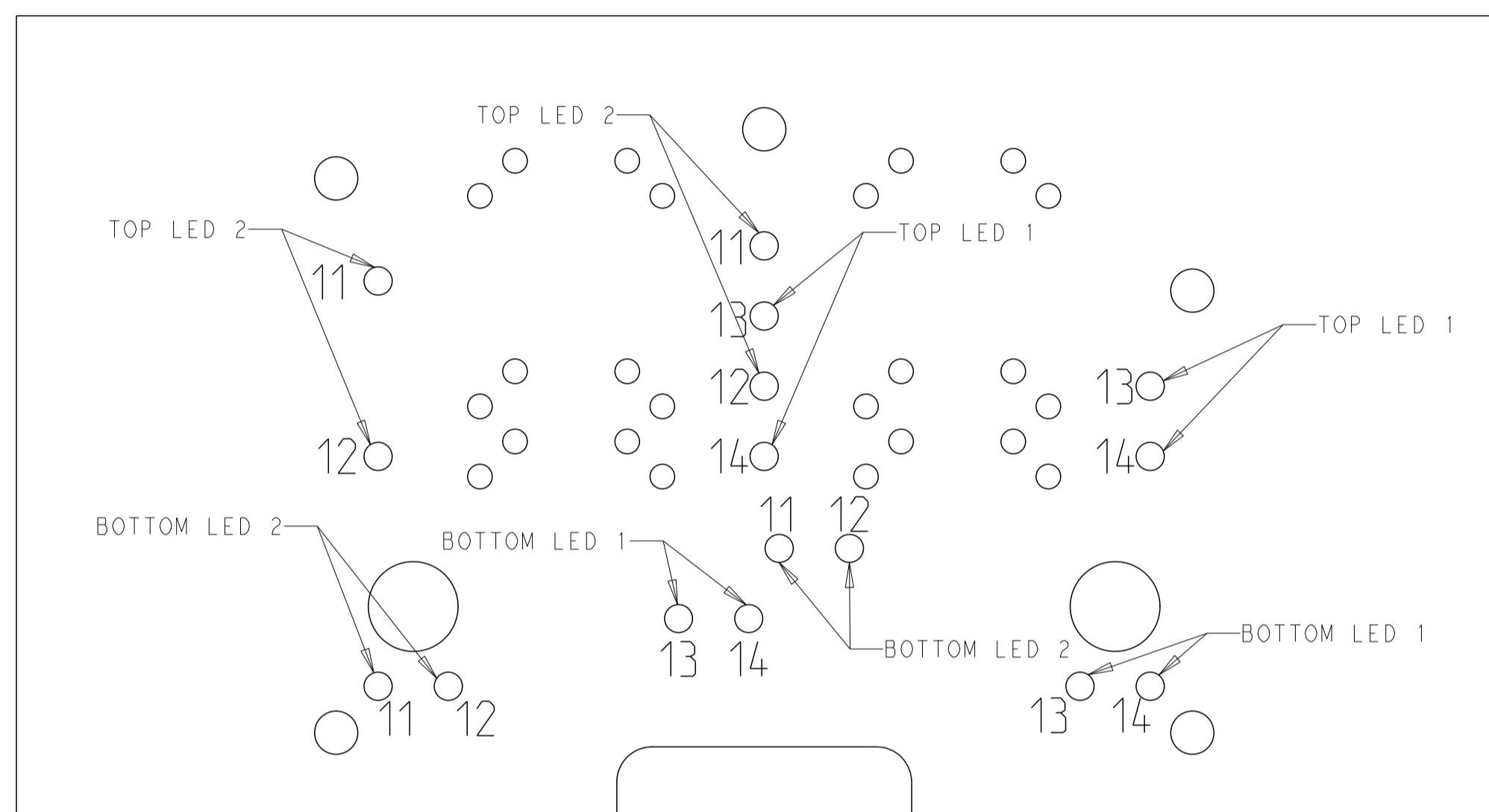
THIS DRAWING IS A CONTROLLED DOCUMENT.		DWN: JAMISON CHEN 13MAY2010		1840969-1	
DIMENSIONS: mm		CHK: TONY YUAN 13MAY2010		PART NUMBER	
TOLERANCES UNLESS OTHERWISE SPECIFIED:		APVD: KEITH ZHU 13MAY2010		DONGGUAN CHINA	
0 PLC $\pm 0.25$		MODEL NAME		DESC	
1 PLC $\pm 0.25$		MAGJACK		2X2 S843P2 10/100 W/ LED	
2 PLC $\pm 0.25$		STACK Non-PoE		SIZE	
3 PLC $\pm 0.25$		CUSTOMER DRAWING		CAGE CODE	
4 PLC $\pm$		108-104004		DRAWING NO	
ANGLES		-		A1	
APPLICATION SPEC		-		C=1840969	
				SCALE 4:1 SHEET 1 OF 4 REV D	



THIS DRAWING IS A CONTROLLED DOCUMENT.		DRN: JAMISON CHEN 13MAY2010	 DONGGUAN CHINA
DIMENSIONS: mm		CHK: TONY YUAN 13MAY2010	
TOLERANCES UNLESS OTHERWISE SPECIFIED:		APP'D: KEITH ZHU 13MAY2010	
0 PLC ±0.25 1 PLC ±0.25 2 PLC ±0.25 3 PLC ± 4 PLC ± ANGLES ±	PRODUCT SPEC 108-104004	MODEL NAME MAGJACK STACK Non-PoE	DESC 2X2 S843P2 10/100 W/ LED
APPLICATION SPEC		SIZE: A1	CAGE CODE C=1840969
CUSTOMER DRAWING		SCALE: 4:1	SHEET 2 OF 4 REV D



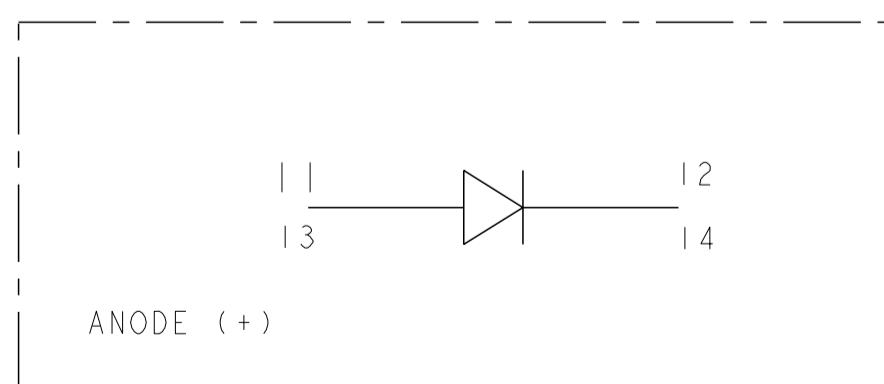
THIS DRAWING IS A CONTROLLED DOCUMENT.		DWN: JAMISON CHEN 13MAY2010		<b>trp</b> CONNECTOR a bel group DONGGUAN CHINA	
DIMENSIONS: mm		CHK: TONY YUAN 13MAY2010			
TOLERANCES UNLESS OTHERWISE SPECIFIED:		APPR: KEITH ZHU 13MAY2010		DESC: 2X2 S843P2 10/100 W/ LED	
0 PLC ±0.25 1 PLC ±0.25 2 PLC ±0.25 3 PLC ± 4 PLC ± ANGLES ±		MODEL NAME: MAGJACK		SIZE: A1	
PRODUCT SPEC: 108-104004		APPLICATION SPEC: -		CAGE CODE: 1840969	
		CUSTOMER DRAWING		SCALE: 4:1 SHEET 3 OF 4 REV D	


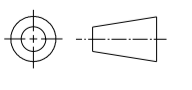


LED HOLE DESIGNATIONS  
VIEWED FROM COMPONENT SIDE

SCALE 5:1

SINGLE COLOR LED



THIS DRAWING IS A CONTROLLED DOCUMENT.		DRW: JAMISON CHEN 13MAY2010	 <b>trp</b> CONNECTOR <small>a bel group</small>	DONGGUAN CHINA
DIMENSIONS: mm		CHK: TONY YUAN 13MAY2010		
TOLERANCES UNLESS OTHERWISE SPECIFIED:		APP'D: KEITH ZHU 13MAY2010		
	0 PLC ±0.25 1 PLC ±0.25 2 PLC ±0.25 3 PLC ± 4 PLC ± ANGLES ±	MODEL NAME: MAGJACK	DESC: 2X2 S843P2 10/100 W/ LED	RESTRICTED TO
PRODUCT SPEC: 108-104004	APPLICATION SPEC: -	SIZE: A1	CAGE CODE: -	DRAWING NO: 1840969
CUSTOMER DRAWING			SCALE: 4:1	SHEET 4 OF 4 REV D