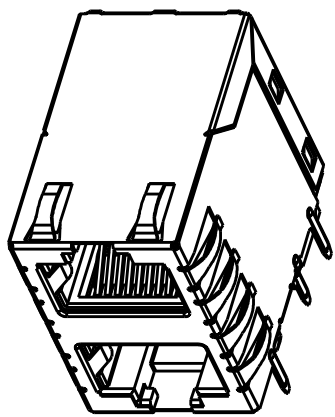


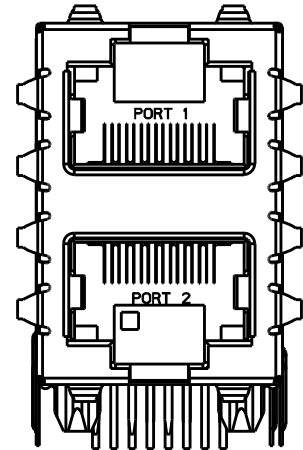
THIS DRAWING AND THE SUBJECT MATTER SHOWN THEREON ARE CONFIDENTIAL AND THE PROPERTY OF BEL/STEWART/TRP CONNECTOR AND SHALL NOT BE REPRODUCED, COPIED, OR USED IN ANY MANNER WITHOUT THE WRITTEN CONSENT OF TRP CONNECTOR.

PRODUCT MAY BE PROTECTED BY ONE OR MORE OF THE FOLLOWING US PATENTS:
 5736910 5939955 6425781 6428361 6554638 6840817 7123117
 7429195 7717749 7808751 6217391 6149050 7924130

| REVISIONS | | | | | |
|-----------|-----|--------------------------------|-----------|-----|------|
| # | LT# | DESCRIPTION | DATE | OWN | APVD |
| 1 | E | EC-1411035 COMPANY LOGO CHANGE | 29JAN2015 | CZ | TY |



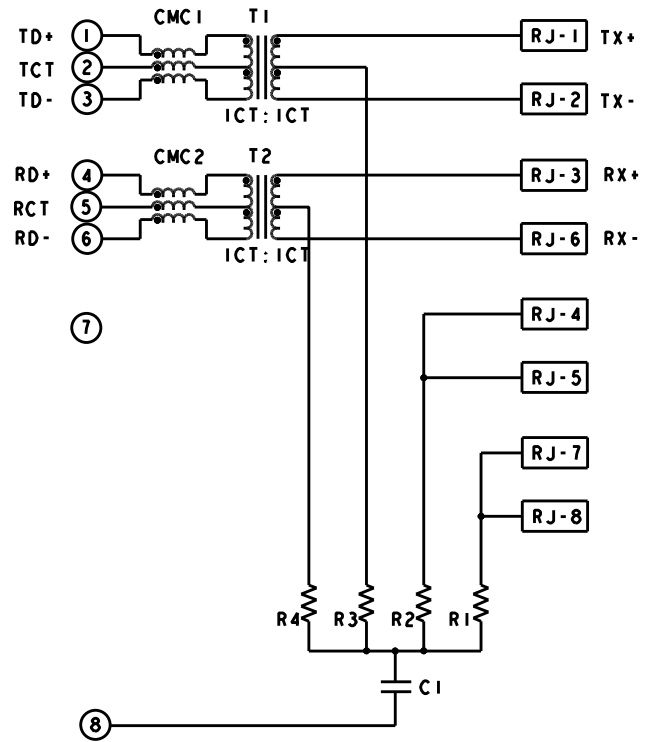
3D VIEW
SCALE 3:1



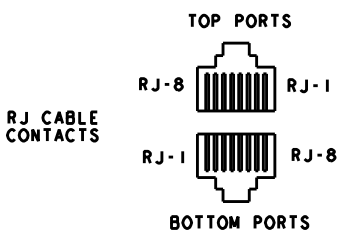
FRONT VIEW
SCALE 4:1

- ⚠ MATERIALS:
 PLASTIC HOUSING: BLACK, THERMOPLASTIC FLAMMABILITY RATING UL 94V-0
 SHIELD: BRASS, PREPLATED WITH 0.76um MIN SEMI-BRIGHT NICKEL,
 POST DIPPED WITH 2.54um MIN SAC SOLDER ON SOLDER TAILS,
 CONTACTS: PHOSPHOR BRONZE, 1.27um MIN OVERALL NICKEL
 UNDERPLATE WITH SELECT 1.27um MIN GOLD AT MATING INTERFACE
 AND 2.54um MIN MATTE TIN ON SOLDER TAILS.
- ⚠ MAGNETICS
 -APPLICATION: 10/100 BASE-T
 -IMPEDANCE: 100 OHMS
 -TURNS RATIO (CHIP:CABLE): TX = 1:1, RX = 1:1
 -OPEN CIRCUIT INDUCTANCE (OCL): 350uH MIN @100kHz, 0.1VRMS,
 8mADC BIAS FROM 0°C TO 70°C, TX AND RX
 -PERFORMANCE @ 25°C:
 INSERTION LOSS (IL): 1.1dB MAX FROM 0.5MHz TO 100MHz
 RETURN LOSS (RL): 18dB MIN FROM 0.5MHz TO 30MHz
 18-20LOG(f/30)dB MIN FROM 30.1MHz TO 60MHz
 12dB MIN FROM 60.1MHz TO 80MHz
 CROSSTALK ATTENUATION: 35dB MIN FROM 0.5MHz TO 40MHz
 33-20LOG(f/50)dB MIN FROM 40.1MHz TO 100MHz
 COMMON MODE REJECTION RATIO (CMRR): 30dB MIN FROM 0.5MHz TO 100MHz
 -ISOLATION VOLTAGE: 2250VDC (MAX) FOR 60 SECONDS WITH A RISE TIME OF
 500V/SEC AND WITH ALL PORTS CONNECTED.
- ⚠ TRP CONNECTOR LOGO, PART NUMBER, DATE CODE, COUNTRY OF ORIGIN,
 AGENCY APPROVAL MARKING IN APPROPRIATE LOCATION SHOWN.
 DATE CODE: "YY" IS YEAR, "WW" IS WORK WEEK,
 "D" IS DAY OF WEEK, WITH SUNDAY=1
- 4. OPERATING TEMP: FROM 0°C TO +70°C.
- ⚠ RJ45 CAVITY CONFORMS TO FCC RULES AND REGULATION PART 68 SUBPART F.
- ⚠ DATUM AND BASIC DIMENSION ESTABLISHED BY CUSTOMER.
- 7. THE PARTS ARE RECOMMENDED FOR WAVE SOLDERING PROCESS,
 PEAK TEMPERATURE 260°C MAX, 10sec MAX.
- 8. THIS COMPONENT IS UL LISTED.

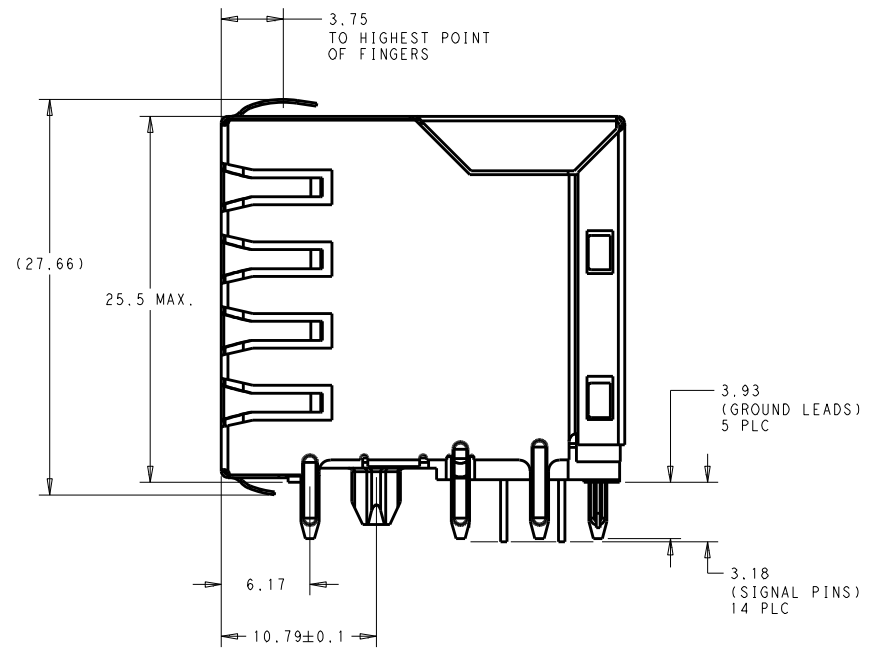
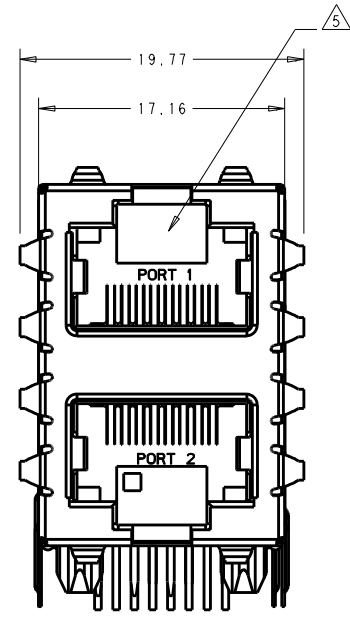
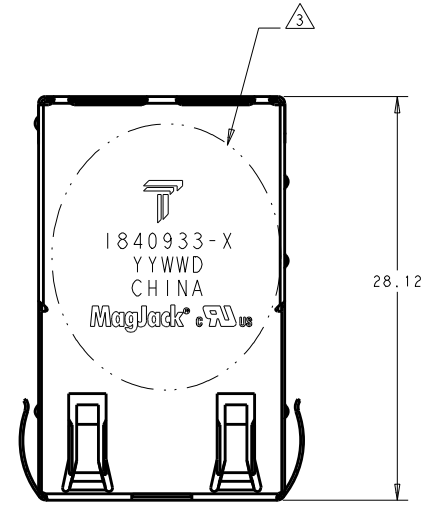
S743PI 10/100 BASE-T CIRCUIT ⚠



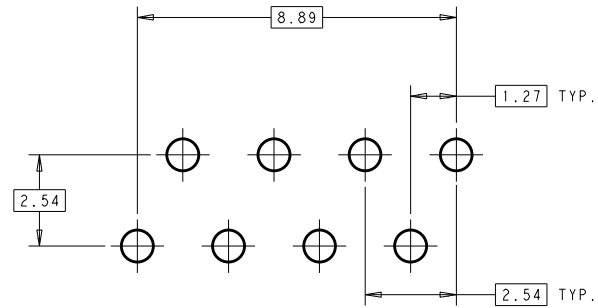
R1 -R4: 75Ω
 C1: 1000pF, 2KV



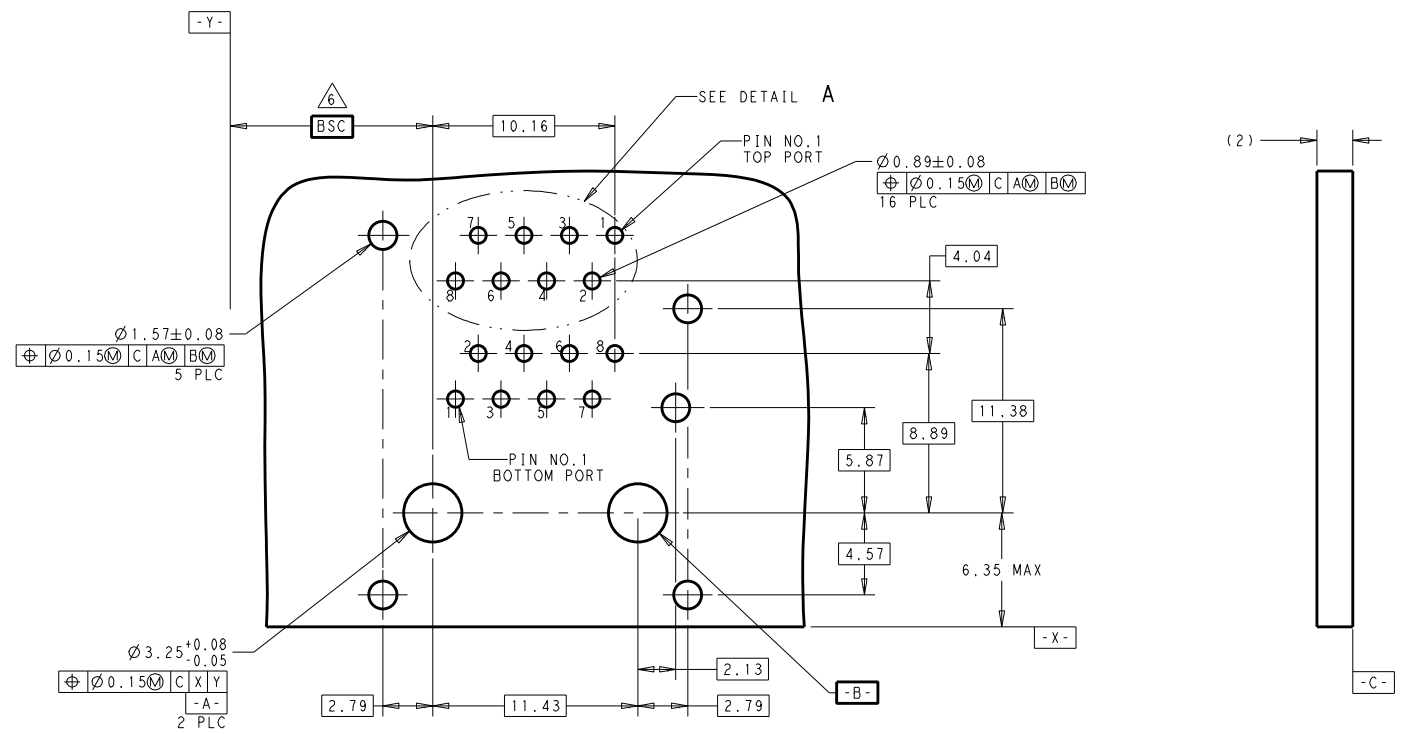
| | | | | | |
|---|----------------------------|--|-----------------------------------|--------------|-----------------------|
| THIS DRAWING IS A CONTROLLED DOCUMENT. | | OWN: CLOUD ZENG 28JAN2010 | TRP CONNECTOR DONGGUAN CHINA | 1840933-1 | |
| DIMENSIONS: mm | | CHK: TONY YUAN 28JAN2010 | | PART NUMBER | |
| TOLERANCES UNLESS OTHERWISE SPECIFIED: | | APVD: KELETH ZHU 28JAN2010 | | | |
| 0 PLC ± 1 PLC ± 2 PLC ±0.25 3 PLC ± 4 PLC ± ANGLES ± | PRODUCT SPEC 108-104004 | MODEL NAME MAGJACK STACK NON-POE | DESC 2X1 S743PI 10/100 W/O LED | SIZE A1 | DRAWING NO 1840933 |
| CUSTOMER DRAWING | | | SCALE | SHEET 1 OF 3 | REV F |



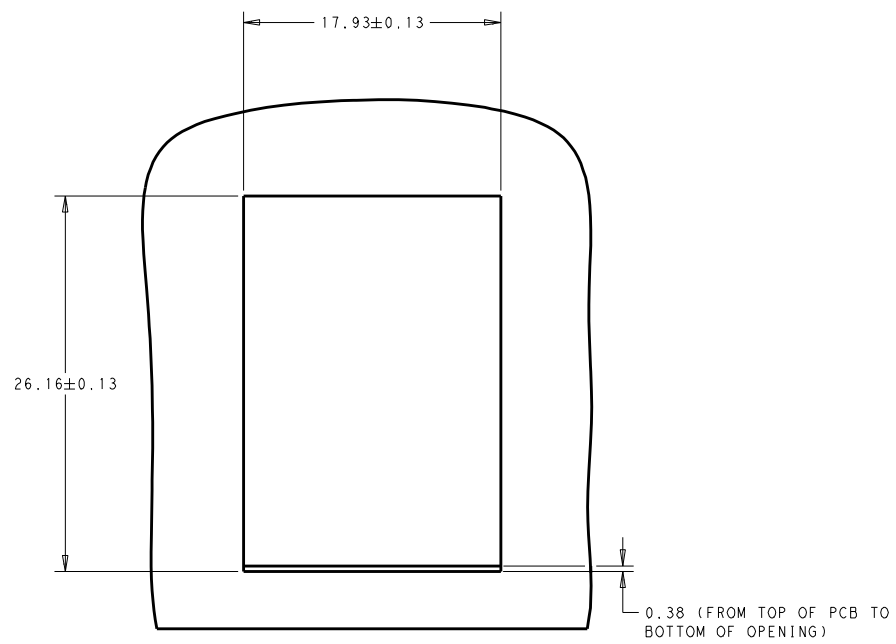
| | | | |
|--|---|--|---------------------------------|
| THIS DRAWING IS A CONTROLLED DOCUMENT. | | DWN: CLOUD ZENG 28JAN2010 CHK: TONY YUAN 28JAN2010 APVD: KEJIA ZHU 28JAN2010 | trp CONNECTOR DONGGUAN CHINA |
| DIMENSIONS: mm | TOLERANCES UNLESS OTHERWISE SPECIFIED: 0 PLC ± 1 PLC ± 2 PLC ±0.25 3 PLC ± 4 PLC ± ANGLES ° | MODEL NAME: MAGJACK DESC: 2X1 S743PI 10/100 W/O LED | |
| PRODUCT SPEC: 108-104004 | APPLICATION SPEC: | SIZE: A1 CAGE CODE: 1840933 DRAWING NO: 1840933 | RESTRICTED TO: |
| CUSTOMER DRAWING | | SCALE: NTS | SHEET 2 OF 3 REV F |



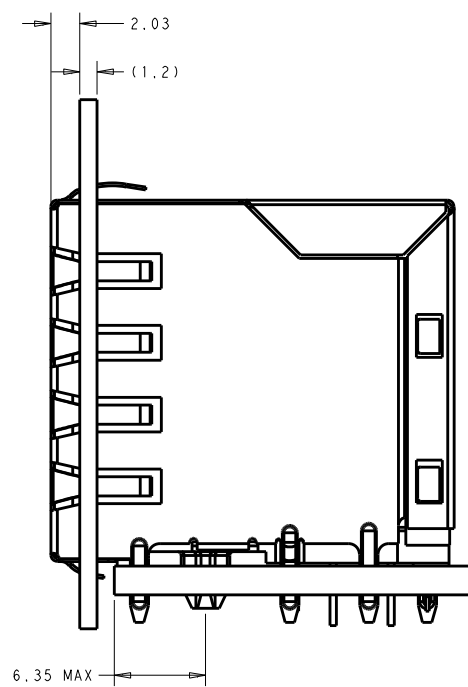
TYPICAL HOLE LAYOUT
 DETAIL A
 SCALE 10:1
 (2 POSITIONS)



RECOMMENDED PC BOARD LAYOUT
 (VIEW FROM COMPONENT SIDE)
 SCALE 5:1



SUGGESTED PANEL OPENING



SIDE VIEW SHOWN WITH PANEL
 AND CUSTOMER PCB
 FOR LOCATION

| | | | |
|--|---------------------|---|---|
| THIS DRAWING IS A CONTROLLED DOCUMENT. | | DATE: 28 JAN 2010 | DONGGUAN CHINA |
| DRAWN BY: CLOUD ZENG | | CHK: TONY YUAN | |
| DATE: 28 JAN 2010 | | DATE: 28 JAN 2010 | |
| DIMENSIONS: mm | | TOLERANCES UNLESS OTHERWISE SPECIFIED: 0 PLC ± 1 PLC ± 2 PLC ±0.25 3 PLC ± 4 PLC ± ANGLES ± | MODEL NAME: MAGJACK DESC: 2X1 S743PI 10/100 W/O LED |
| PRODUCT SPEC: 108-104004 | APPLICATION SPEC: - | SIZE: A1 CAGE CODE: - DRAWING NO: 1840933 CUSTOMER DRAWING | RESTRICTED TO: - SCALE: NTS SHEET: 3 OF 3 REV: F |