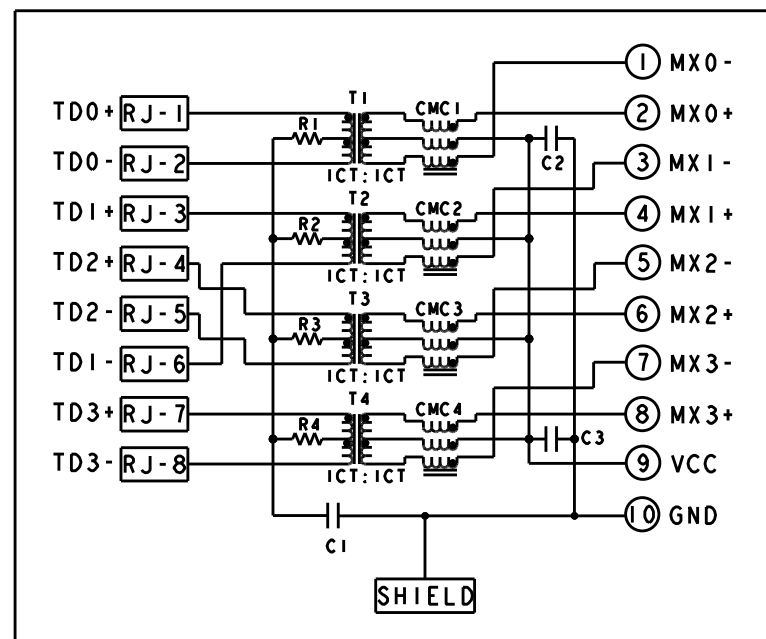


S8G56 GIGABIT CIRCUIT

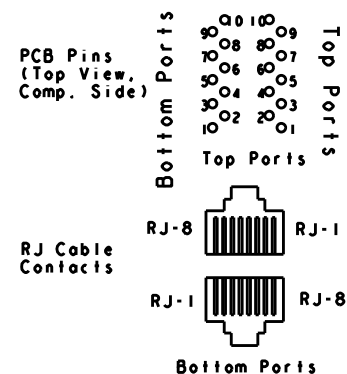
Top and Bottom Ports



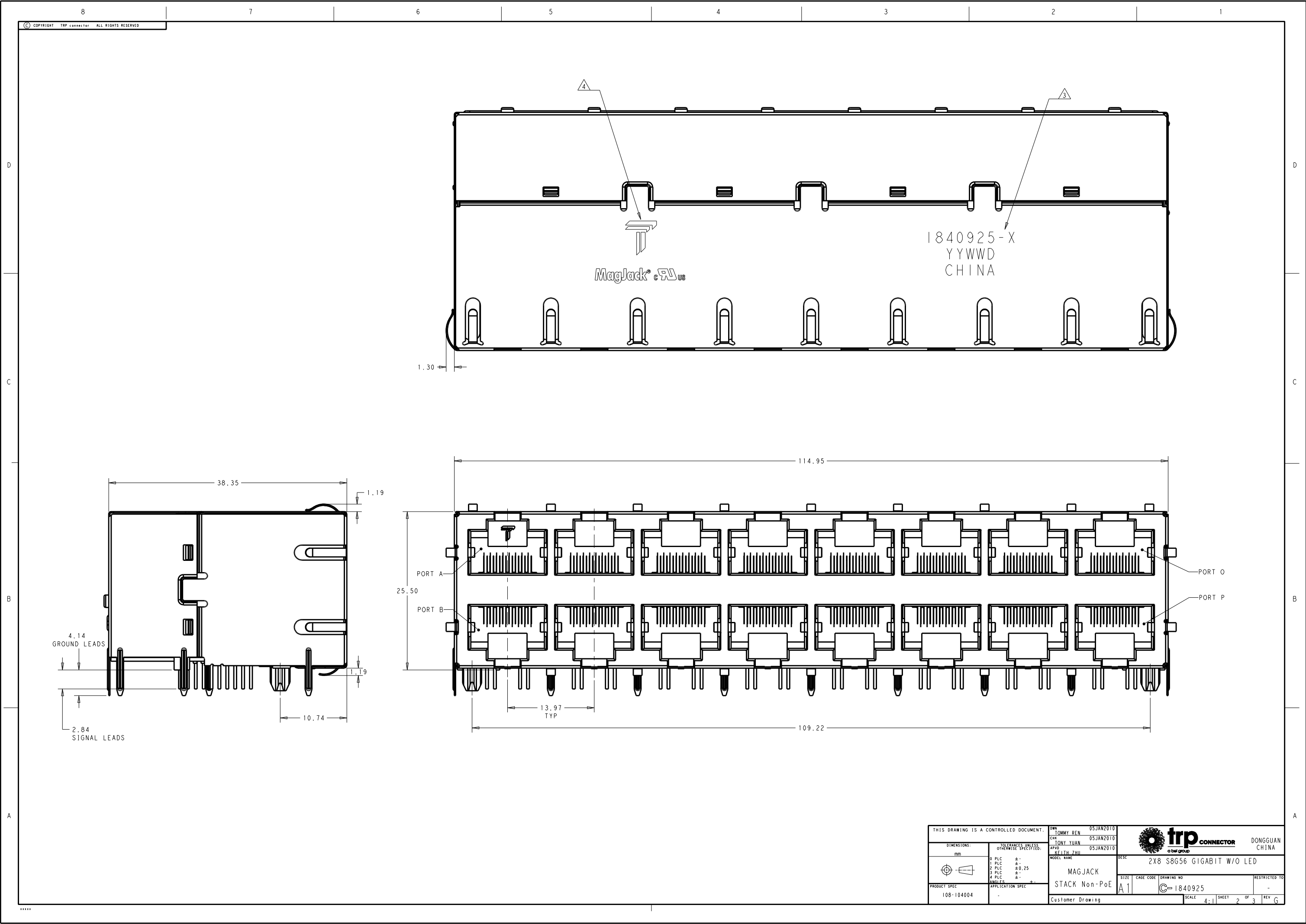
C1 = 1000pF, 2kV Capacitor
C2 - C3 = 10nF, 50V Capacitors
R1-R4 = 75 Ohms, 1/16 W, Resistors



Pin Designations

(Repeat for each vertical pair of ports.)



- MATERIALS:**
HOUSING: BLACK, THERMOPLASTIC FLAMMABILITY RATING UL 94V-0
SHIELD: BRASS, PREPLATED WITH 0.76um MIN SEMI-BRIGHT NICKEL, POST DIPPED WITH 2.54um MIN SAC SOLDER ON SOLDER TAILS.
CONTACTS: PHOSPHOR BRONZE, 1.27um MIN OVERALL NICKEL UNDERPLATE WITH SELECT 1.27um MIN GOLD AT MATING INTERFACE AND 2.54um MIN MATTE TIN ON SOLDER TAILS.
ALL PC BOARDS: HIGH TEMPERATURE PCB, TG>170°C
- MAGNETICS**
APPLICATION: 10/100/1000 BASE-T
IMPEDANCE: 100 OHMS
TURNS RATIO (CHIP:CABLE): 1:1 ALL FOUR PAIRS
OPEN CIRCUIT INDUCTANCE (OCL): 350uH MIN @100kHz, 0.1VRMS, 8mADC BIAS FROM 0°C TO 70°C, ALL FOUR PAIRS
ALL FOUR PAIRS BI-DIRECTIONAL
PERFORMANCE @ 25°C:
INSERTION LOSS (IL): 1.1dB MAX FROM 0.5MHz TO 100MHz
RETURN LOSS (RL): 18dB MIN FROM 0.5MHz TO 40MHz
12-20LOG(f/80)dB MIN FROM 40.1MHz TO 100MHz
CROSSTALK ATTENUATION: 35dB MIN FROM 0.5MHz TO 40MHz
33-20LOG(f/50)dB MIN FROM 40.1MHz TO 100MHz
COMMON MODE REJECTION RATIO (CMRR): 30dB MIN FROM 0.5MHz TO 100MHz
ISOLATION VOLTAGE: 2250VDC(MAX) FOR 60 SECONDS WITH A RISE TIME OF 500V/SEC AND WITH ALL PORTS CONNECTED.
- PART NUMBER, DATE CODE AND COUNTRY OF ORIGIN ARE LOCATED IN APPROXIMATE AREA SHOWN. DATE CODE YY IS YEAR, WW IS WORK WEEK, D IS DAY OF WEEK, WITH SUNDAY=1**
- TRP LOGO AND AGENCY APPROVAL LOGO ARE LOCATED IN APPROXIMATE AREA SHOWN.**
- OPERATING TEMP: FROM 0°C TO +70°C.**
- RJ45 CAVITY CONFORMS TO FCC RULES AND REGULATION PART 68 SUBPART F.**
- INDICATED MAGNETIC CONNECTIONS ARE SYMMETRICAL AND SUPPORT AUTO-MDI/MDIX.**
- DATUM AND BASIC DIMENSION ESTABLISHED BY CUSTOMER.**
- BASIC DIMENSION ESTABLISHED BY CUSTOMER, BUT MAY NOT BE GREATER THAN 5.08mm.**
- THE PARTS ARE RECOMMENDED FOR WAVE SOLDERING PROCESS, PEAK TEMPERATURE 260°C MAX, 10 SECONDS MAX.**



THIS DRAWING IS A CONTROLLED DOCUMENT.				DWN TOMMY REN 05JAN2010		 trp CONNECTOR a bel group		DONGGUAN CHINA	
DIMENSIONS: mm				CHK TONY YUAN 05JAN2010					
TOLERANCES UNLESS OTHERWISE SPECIFIED:				APVD KEITH ZHU 05JAN2010					
				MODEL NAME		DESC		2X8 S8G56 GIGABIT W/O LED	
0 PLC ± - 1 PLC ± - 2 PLC ± 0.25 3 PLC ± - 4 PLC ± - ANGLES				MAGJACK		SIZE		CAGE CODE	
PRODUCT SPEC 108-104004				STACK Non-PoE		DRAWING NO		RESTRICTED TO	
APPLICATION SPEC				Customer Drawing		A1		C= 1840925	
						SCALE 4:1		SHEET 2 of 3 REV G	

