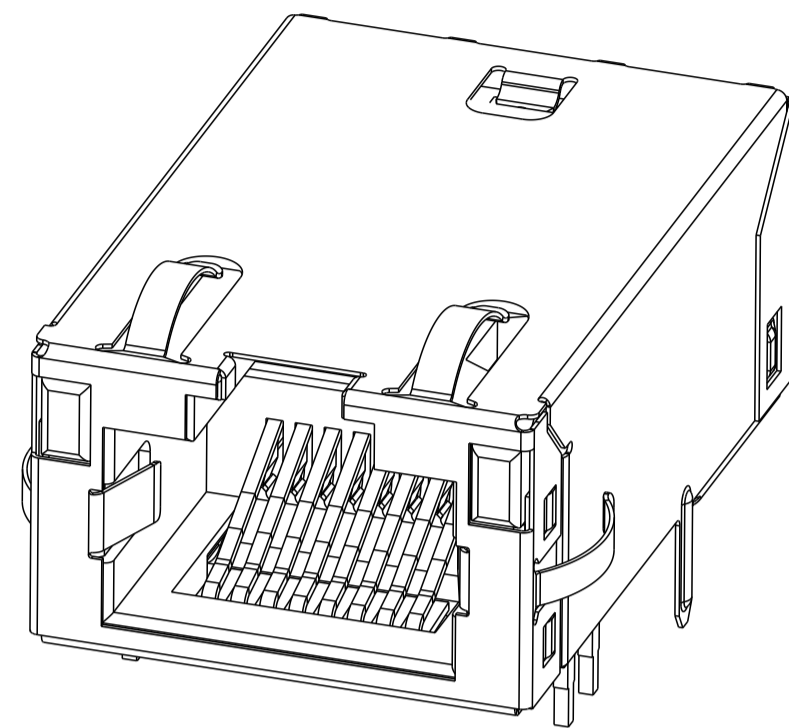
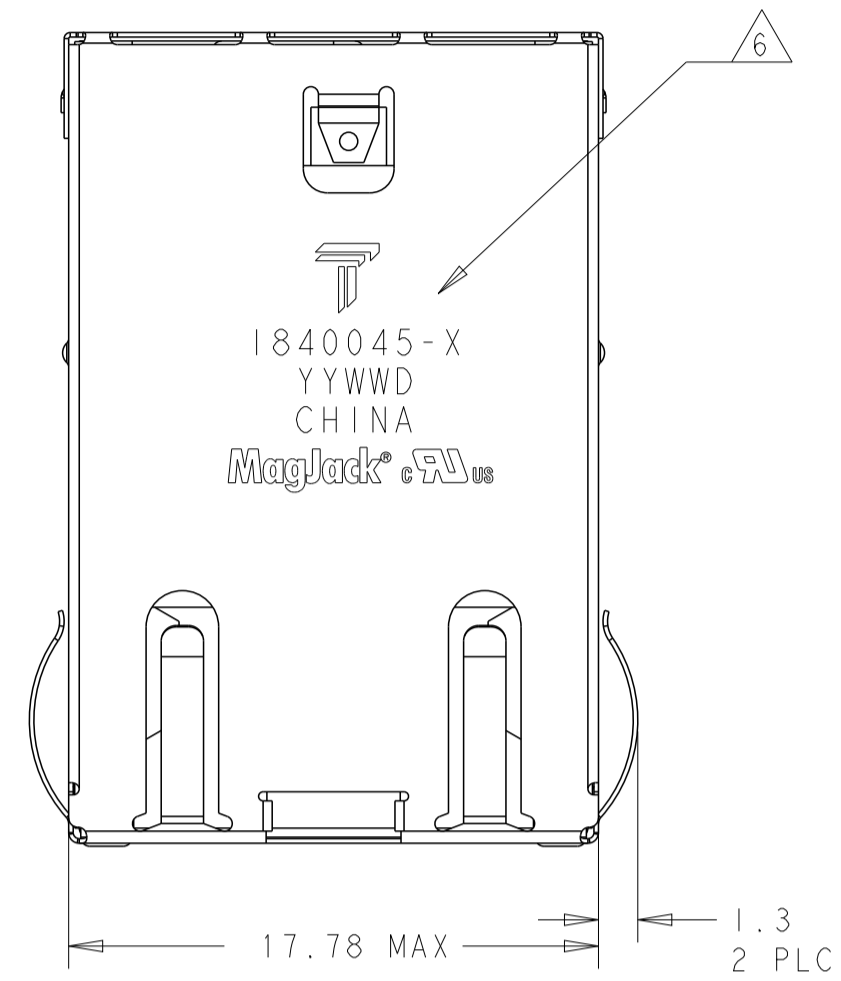


THIS DRAWING AND THE SUBJECT MATTER SHOWN THEREON ARE CONFIDENTIAL AND THE PROPERTY OF BEL/STEWART/TRP CONNECTOR AND SHALL NOT BE REPRODUCED, COPIED, OR USED IN ANY MANNER WITHOUT THE WRITTEN CONSENT OF TRP CONNECTOR.

PRODUCT MAY BE PROTECTED BY ONE OR MORE OF THE FOLLOWING US PATENTS:
 5736910 5939955 6425781 6428361 6554638 6840817 7123117
 7429195 7717749 7808751 6217391 6149050 7924130

REVISIONS				
P	LTN	DESCRIPTION	DATE	APPV
B		EC-1411035 COMPANY LOGO CHANGE	25DEC2014	RL TY



1. MATERIALS:

- HOUSING: THERMOPLASTIC FLAMMABILITY, RATING, UL 94V-0
- SHIELD: STAINLESS STEEL 0.15mm THICK, PREPLATED WITH 0.76 um MIN SEMI-BRIGHT NICKEL; SOLDER TABS POST PREPLATED WITH 3um TIN.
- MOD JACK CONTACTS: 0.3mm THICK, PHOSPHOR BRONZE, 1.27 um MIN OVERALL NICKEL UNDERPLATE, WITH 0.76um MIN LOCALIZED GOLD PLATE AT PLUG INTERFACE
- LIGHT EMITTING DIODE (LED): DIFFUSED EPOXY LENS, 0.5mm X 0.5mm CARBON STEEL WIREFRAME LEADS PREPLATED WITH 2.03um MIN. SILVER PLATE OVER 1.02um MIN. NICKEL OVER 1.02um MIN. COPPER UNDERPLATE; LEADS POST-PLATED WITH 3.05um MIN. MATTE TIN.

△ RJ45 JACK CAVITY CONFORMS TO FCC RULES AND REGULATIONS PART 68, SUB-PART F.

△ MAGNETICS:

- APPLICATION: 10/100/1000 BASE-T
- IMPEDANCE: 100 OHMS
- TURNS RATIO (CHIP:CABLE): 1:1 ALL FOUR PAIRS
- OPEN CIRCUIT INDUCTANCE (OCL): 350uH MIN @100kHz, 0.1VRMS, 8mADC BIAS FROM 0°C TO 70°C, ALL FOUR PAIRS
- ALL FOUR PAIRS BI-DIRECTINAL
- PERFORMANCE @ 25°C:
 - INSERTION LOSS (IL): 1.1dB MAX FROM 0.5MHz TO 100MHz
 - RETURN LOSS (RL): 18dB MIN FROM 0.5MHz TO 40MHz
 - 12-20LOG(f/80)dB MIN FROM 40.1MHz TO 100MHz
 - CROSSTALK ATTENUATION: 35dB MIN FROM 0.5MHz TO 40MHz
 - 33-20LOG(f/50)dB MIN FROM 40.1MHz TO 100MHz
 - COMMON MODE REJECTION RATIO (CMRR): 30dB MIN FROM 0.5MHz TO 100MHz
- ISOLATION VOLTAGE: 2250 VDC FOR 60 SECONDS WITH A RISE TIME OF 500V/SEC

△ OPERATING TEMPERATURE: FROM 0°C TO 70°C

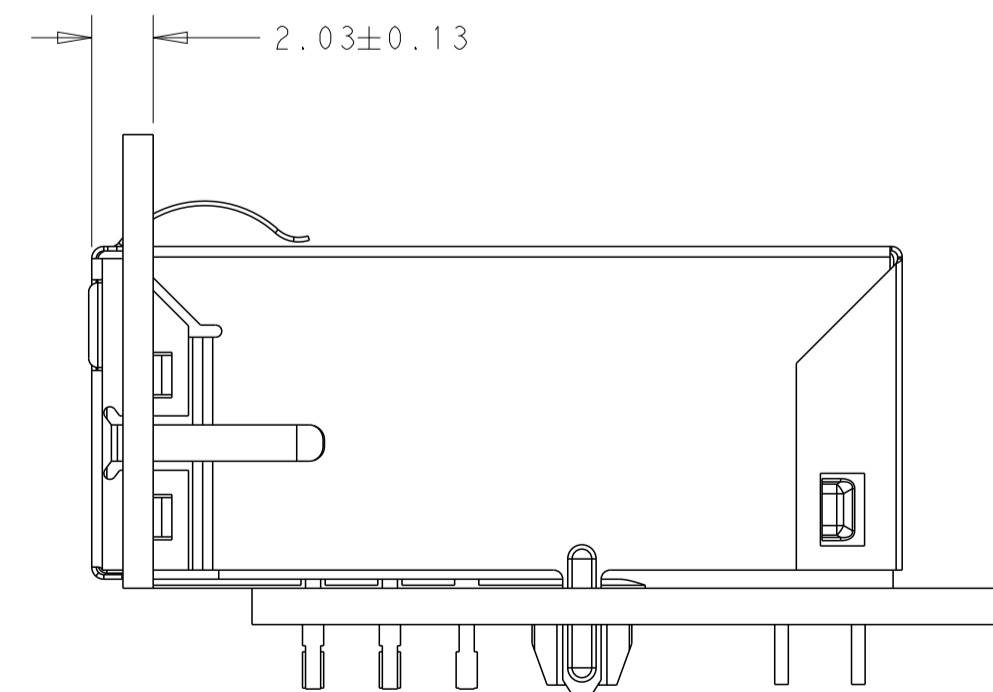
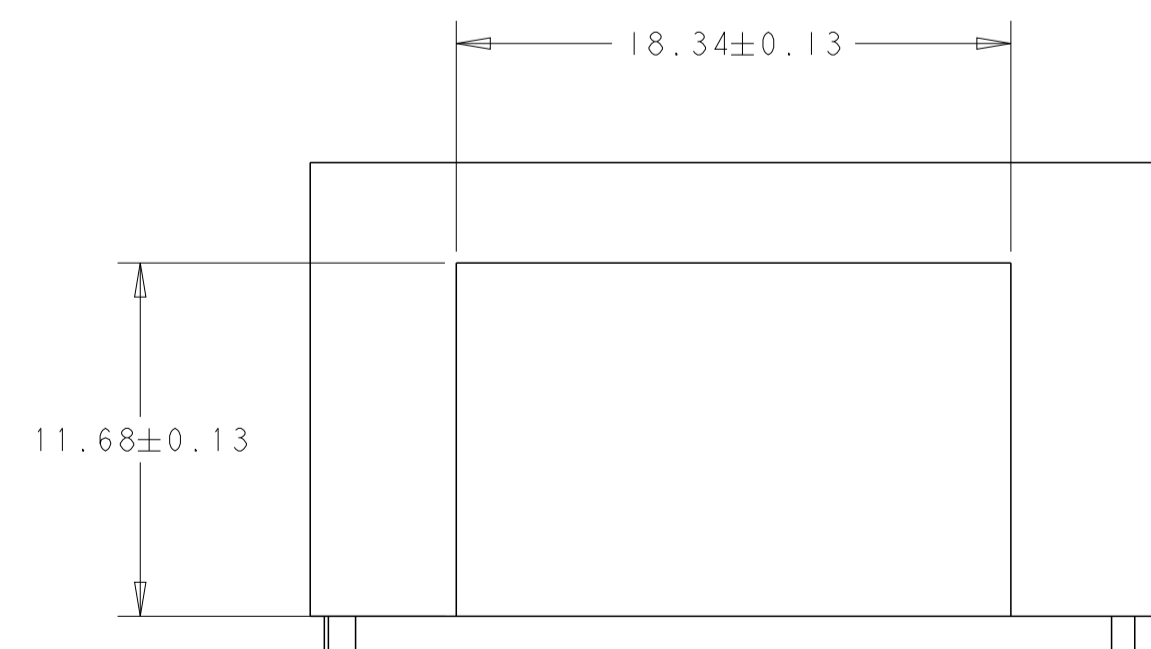
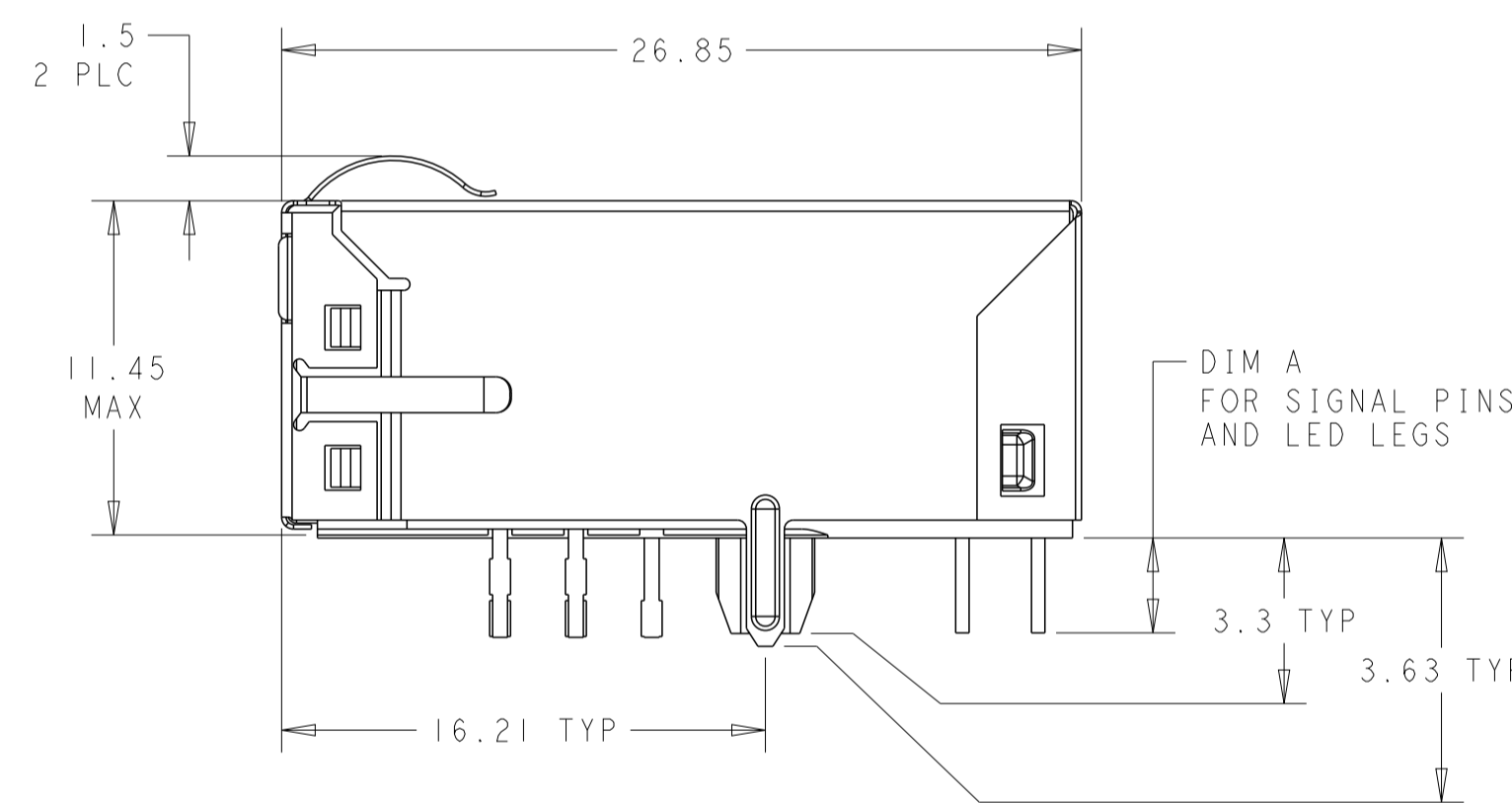
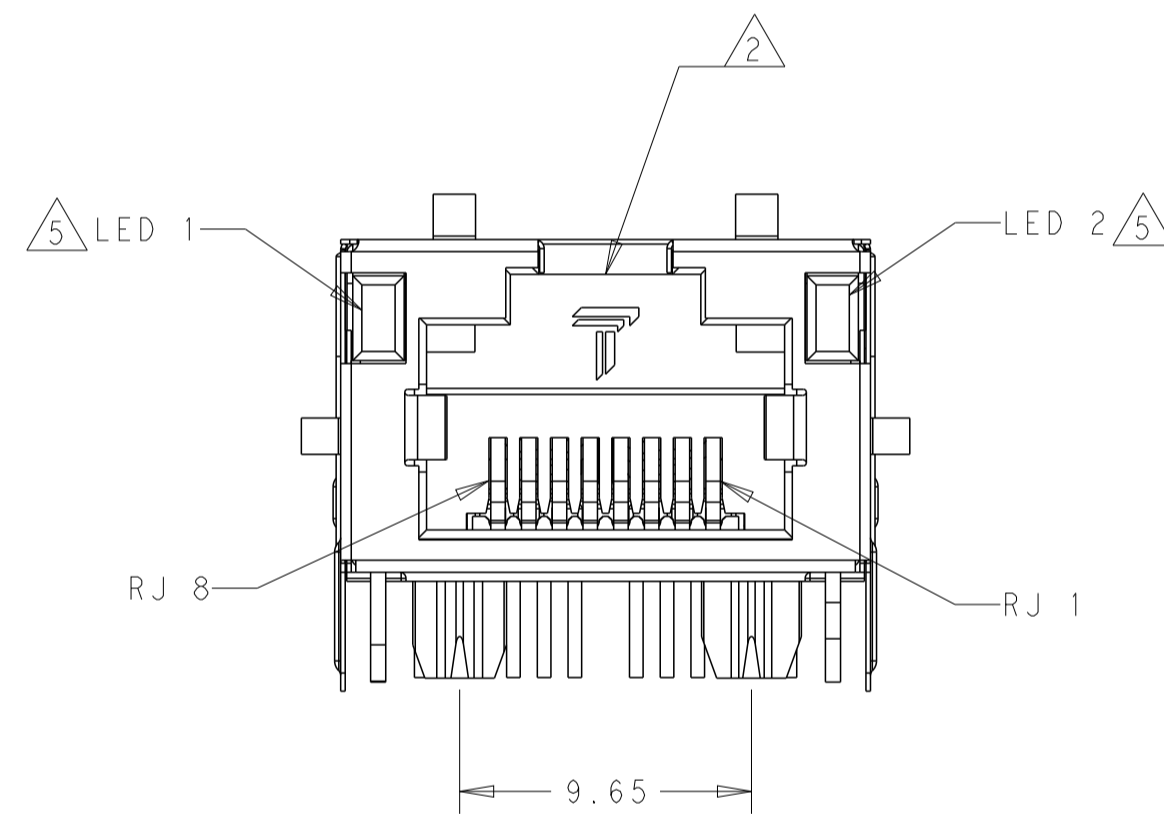
△ LED IS WITH CONSTANT CURRENT AT APPROX 20mA.

LED COLOR: DOMINANT WAVELENGTH(λ_D), GREEN = 568±5nm TYP. at IF=20mA
 FORWARD VOLTAGE(VF), GREEN 2.2V TYP. at IF=20mA.
 DOMINANT WAVELENGTH(λ_D), YELLOW = 588±5nm TYP. at IF=20mA
 FORWARD VOLTAGE(VF), YELLOW 2.1V TYP. at IF=20mA.

△ TRP CONNECTOR LOGO, PART NUMBER, DATE CODE, COUNTRY OF ORIGIN AND AGENCY APPROVAL MARKING IN APPROXIMATE LOCATION SHOWN.

△ THIS PART IS COMPLIANT TO WAVE SOLDERING PROCESS, PREHEAT TEMPERATURE IS 120°C TO 160°C, 120 SECONDS TO 180 SECONDS, PEAK SOLDERING TEMPERATURE IS 260°C MAX, 10 SECONDS MAX

△ THESE PARTS ARE COMPLIANT TO IR REFLOW SOLDERING PROCESS, PEAK SOLDERING TEMPERATURE 260°C MAX DURATION TIME 10 SECONDS MAX, OVER 230°C WITHIN 40-60 SECONDS.



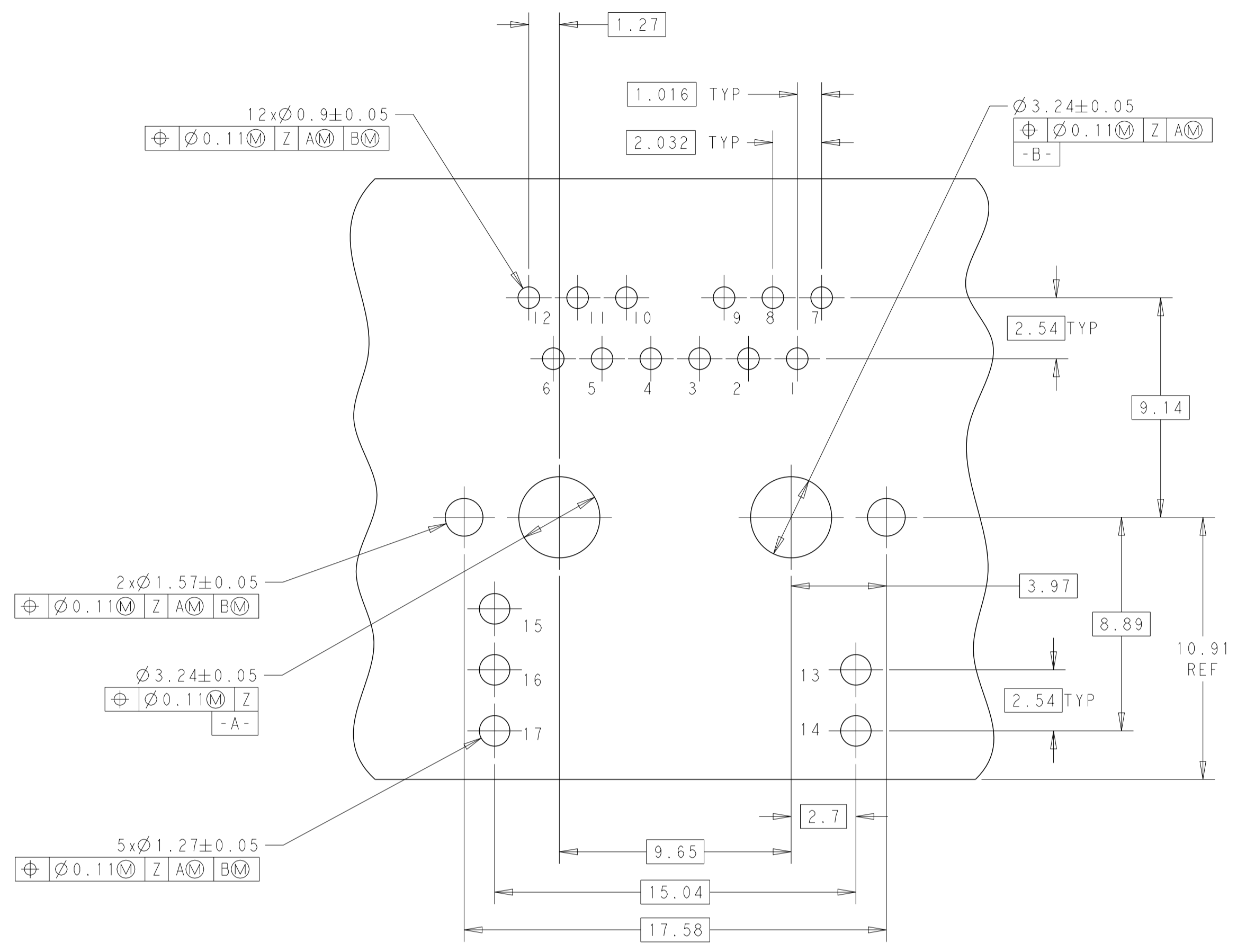
SUGGESTED PANEL CUTOUT

3.18	TRAY	WAVE SOLDERING △7	YELLOW	GREEN	GREEN	1840045-3			
2.30	TARY	IR REFLOW △8	YELLOW	GREEN	GREEN	1840045-2			
3.18	TRAY	IR REFLOW △8	YELLOW	GREEN	GREEN	1840045-1			
DIM A	PACKAGE METHOD	SOLDERING PROCESS	16	15	16	17	14	13	PART NO.
			LED 1			LED 2			

THIS DRAWING IS A CONTROLLED DOCUMENT.		OWN	ROY LIU	230CT2013
DIMENSIONS:		CHK	TOWER YU / FRANK LIU	230CT2013
mm		APPV	TONY YUAN	230CT2013
TOLERANCES UNLESS OTHERWISE SPECIFIED:		MODEL NAME		
0 PLC ±0.25		MAGJACK		
1 PLC ±0.25		DESC		
2 PLC ±0.25		SINGLE Non-PoE		
3 PLC ±		SIZE		
4 PLC ±		CAGE CODE		
ANGLES		DRAWING NO		
APPLICATION SPEC		RESTRICTED TO		
PRODUCT SPEC		A1		
108-104004		SCALE		
		4:1		
		SHEET		
		1		
		OF		
		2		
		REV		
		B		

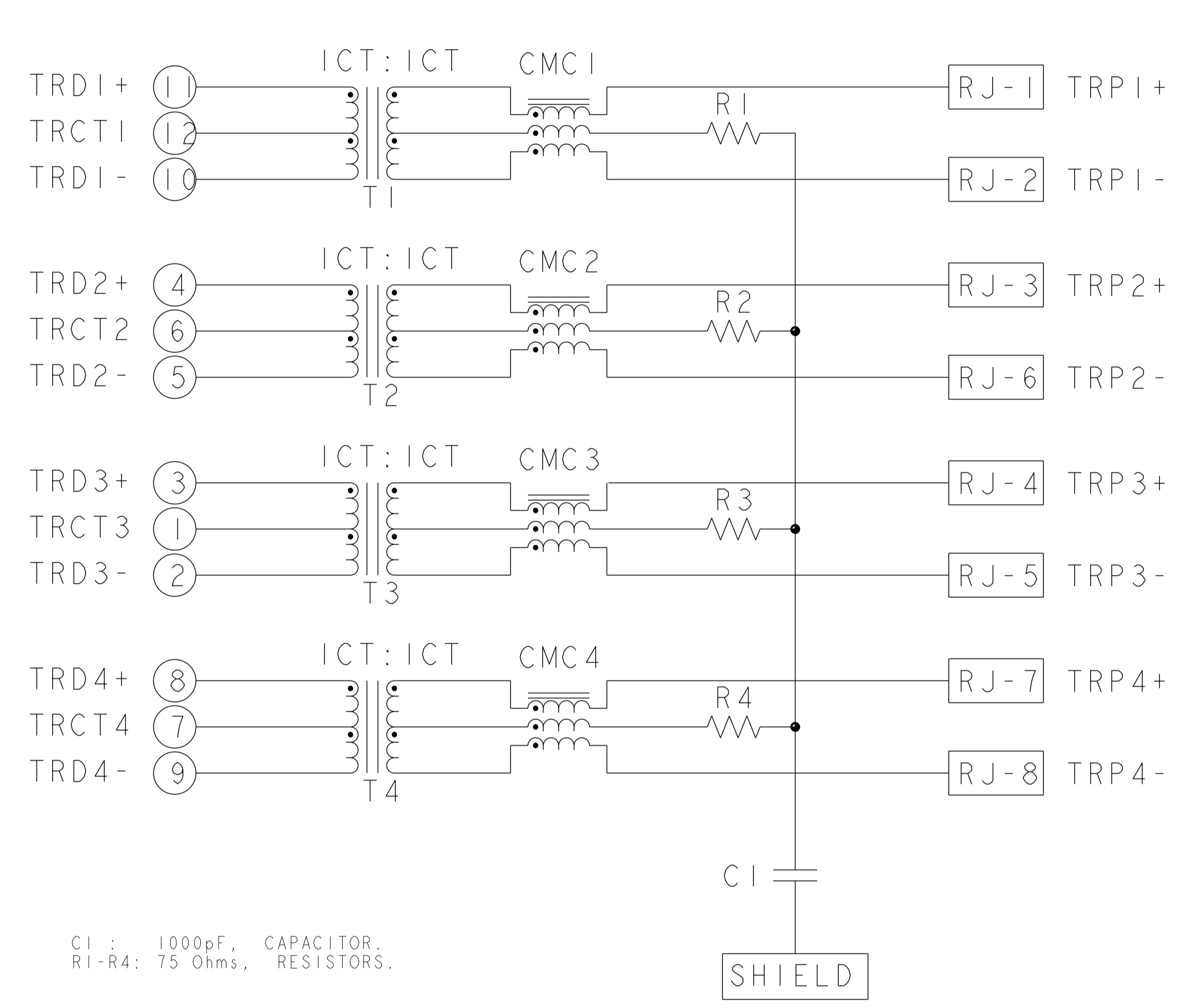


IXI IG18 GIGABIT
 TAB UP LOW PROFILE W/ LED
 ©=1840045



SUGGESTED PCB LAYOUT

IG18 GIGABIT CIRCUIT



C1 : 1000pF, CAPACITOR.
 R1-R4: 75 Ohms, RESISTORS.

THIS DRAWING IS A CONTROLLED DOCUMENT.		OWN: ROY LIU 23OCT2013	 trp CONNECTOR <small>a bel group</small>	DONGGUAN CHINA
DIMENSIONS: mm		CHK: TOWER YU / FRANK LIU 23OCT2013		DESC: IX1 IG18 GIGABIT TAB UP LOW PROFILE W/ LED
TOLERANCES UNLESS OTHERWISE SPECIFIED:		APVD: TONY YUAN 23OCT2013	MODEL NAME: MAGJACK	SIZE: A1
0 PLC ±0.25 1 PLC ±0.25 2 PLC ±0.25 3 PLC ± 4 PLC ± ANGLES ± APPLICATION SPEC ±		PRODUCT SPEC: 108-104004	MODEL NAME: SINGLE Non-PoE	CAGE CODE: C=1840045
		SCALE: 4:1	SHEET: 2 OF 2	REV: B