

THE INFORMATION CONTAINED HEREIN IS CONSIDERED 'PROPRIETARY' TO BEL FUSE INC. AND SHALL NOT BE COPIED, REPRODUCED OR DISCLOSED WITHOUT THE WRITTEN APPROVAL OF BEL FUSE INC.

RoHS

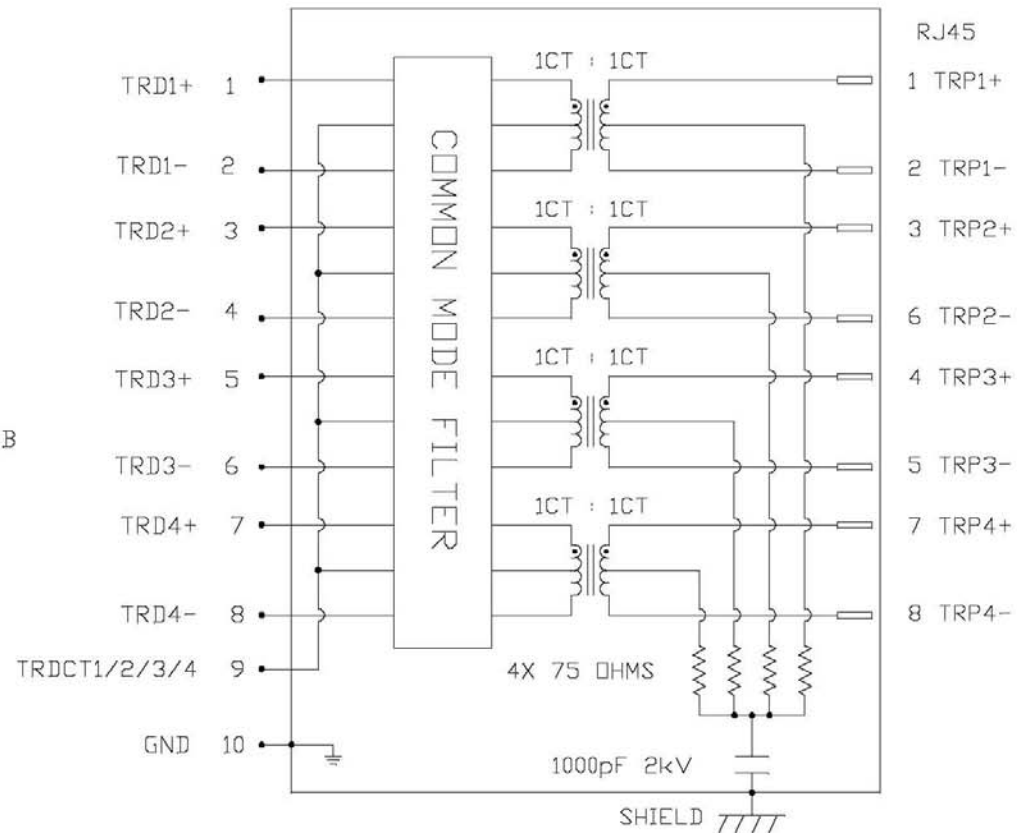


ELECTRICAL CHARACTERISTICS @ 25°C

URNS RATIO

TP1	1CT : 1CT ±2%
TP2	1CT : 1CT ±2%
TP3	1CT : 1CT ±2%
TP4	1CT : 1CT ±2%
□CL @ 100kHz/100mVRMS	350µH MIN.
8mA DC BIAS	
INS. LOSS	
0.1MHz TO 1MHz	-1.1 dB MAX
1MHz TO 65MHz	-0.5 dB MAX
65MHz TO 100MHz	-0.8 dB MAX
100MHz TO 125MHz	-1.2 dB MAX
RET. LOSS (MIN)	
0.5MHz-40MHz	-18 dB
40MHz-100MHz	-12+20LOG(F/80MHz) dB
CM TO CM REJ	
100kHz - 100MHz	-30 dB MIN
CM TO DM REJ	
100kHz - 100MHz	-35 dB MIN
HIPDT (Isolation Voltage):	1500 Vrms
100% OF PRODUCTION TESTED TO COMPLY WITH IEEE 802.3 ISOLATION REQUIREMENTS.	
OPERATING TEMPERATURE:	0°C TO +70°C.

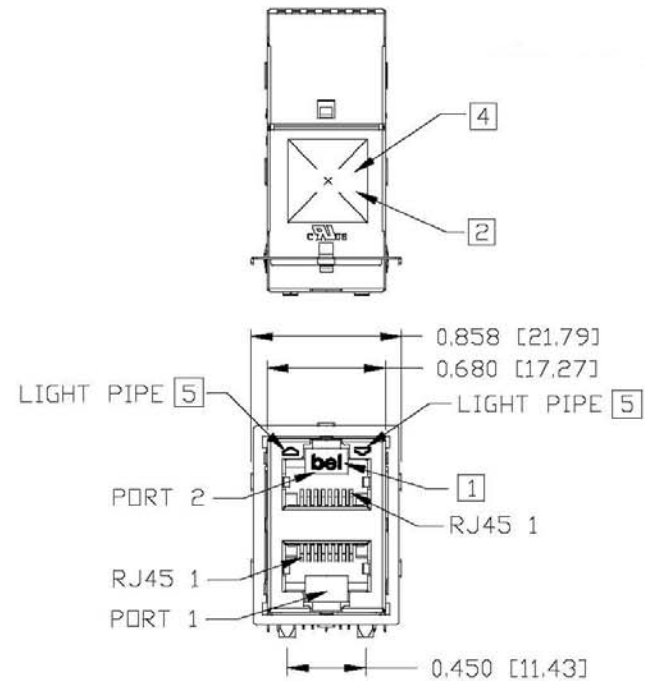
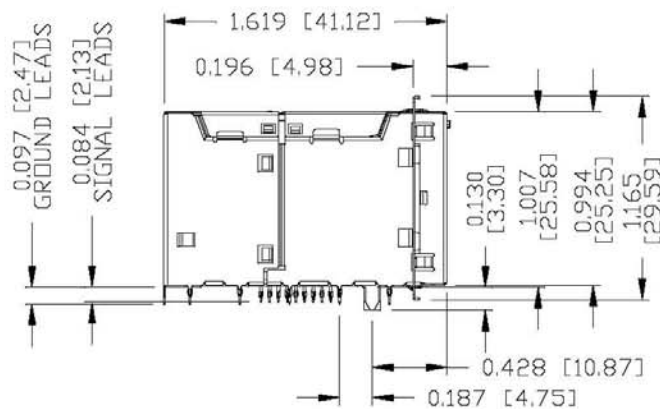
SCHEMATIC



REV. : PC PAGE : 2

ORIGINATED BY CHOW WANCHUNG DATE 2019-08-13	TITLE 2X1 gigabit MagJack® PRESS FIT 08G0-281D-GUA PATENTED	PART NO. / DRAWING NO. 08G0-281DGUA	STANDARD DIM.	[] METRIC DIM.	 a bel group
			TOL. IN INCH	AS REF.	
DRAWN BY XIE YIMING DATE 2019-08-13	FILE NAME 08G0-281DGUA_PC.DWG	.X	UNIT : INCH [mm]		
		.XX	SCALE : N/A		
		.XXX	SIZE : A4		


THE INFORMATION CONTAINED HEREIN IS CONSIDERED 'PROPRIETARY' TO BEL FUSE INC. AND SHALL NOT BE COPIED, REPRODUCED OR DISCLOSED WITHOUT THE WRITTEN APPROVAL OF BEL FUSE INC.



NOTES:

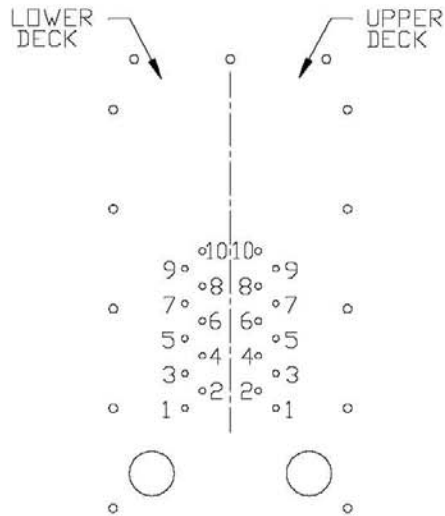
- PLASTIC HOUSING: THERMOPLASTIC PA, BLACK
FLAMMABILITY RATING UL 94V-0
- CONTACT PLATING: 50 MICRO-INCH HARD GOLD PLATING OR EQUIVALENT
- OUTPUT PINS: NICKEL PLATED ON COPPER ALLOY PRESS FIT PINS
- METAL SHIELD: NICKEL OR TIN PLATED ON COPPER ALLOY.
- [1] JACK CAVITY CONFORMS TO FCC RULES AND REGULATIONS, PART 68 SUBPART F.
- [2] MARK PART WITH MFG LOGO, NAME, PART NUMBER AND DATE CODE.
- [3] THE PRODUCT IS RoHS COMPLIANCE.

- UL USUL RECOGNIZED - FILE #E196366 AND E169987.
- [4] THE PRODUCT IS PATENTED. "PATENTED" MARKING IS ON THE TOP SURFACE. THE PATENT NUMBER ARE U.S. PAT. 6,840,817 AND U.S. PAT. 7,123,117.
- [5] THE FINISHED GOODS IS WITHOUT SMD LED. THE SMD LED IS PROVIDED BY CUSTOMER HERSELF. AND THE SMD LED IS MOUNTED ON CUSTOMER PCB.
- [6] RECOMMENDED MINIMUM CUSTOMER PCB THICKNESS IS 0.080 INCH.

ORIGINATED BY ANTON LIAO DATE 2019-08-13		TITLE 2X1 gigabit MagJack® PRESS FIT 08G0-281D-GUA PATENTED		PART NO. / DRAWING NO. 08G0-281DGUA		STANDARD DIM. TOL. IN INCH		[] METRIC DIM. AS REF.		REV. : PC	PAGE : 3
DRAWN BY LI QUANKUN DATE 2019-08-13				FILE NAME 08G0-281DGUA_PC.DWG		.X .XX .XXX		UNIT : INCH [mm] SCALE : N/A SIZE : A4			
						+0.010					

THE INFORMATION CONTAINED HEREIN IS CONSIDERED 'PROPRIETARY' TO BEL FUSE INC. AND SHALL NOT BE COPIED, REPRODUCED OR DISCLOSED WITHOUT THE WRITTEN APPROVAL OF BEL FUSE INC.

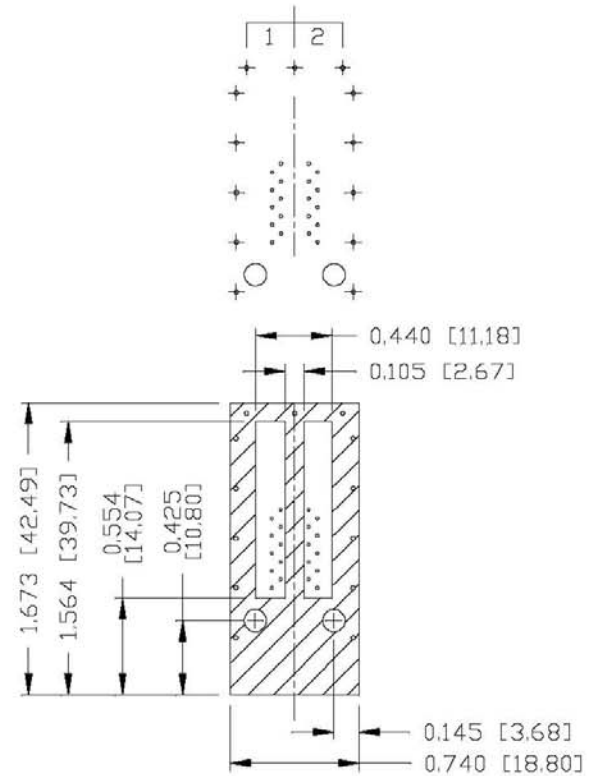
RoHS



PIN-OUT INFORMATION
(COMPONENT SIDE VIEW)

10	GND
9	TRDCT1/2/3/4
8	TRD4-
7	TRD4+
6	TRD3-
5	TRD3+
4	TRD2-
3	TRD2+
2	TRD1-
1	TRD1+

PORT ASSIGNMENT
(COMPONENT SIDE VIEW)



THE SHADED AREA ON THE CUSTOMER BOARD ARE RECOMMENDED TO BE CLEAR OFF ANY VIA HOLE OR COMPONENT PAD.

REV. : PC PAGE : 4

ORIGINATED BY
ANTON LIAO
DATE 2019-08-13

DRAWN BY
LI QUANKUN
DATE 2019-08-13

TITLE
2X1 gigabit MagJack®
PRESS FIT
08G0-281D-GUA
PATENTED

PART NO. / DRAWING NO.
08G0-281DGUA

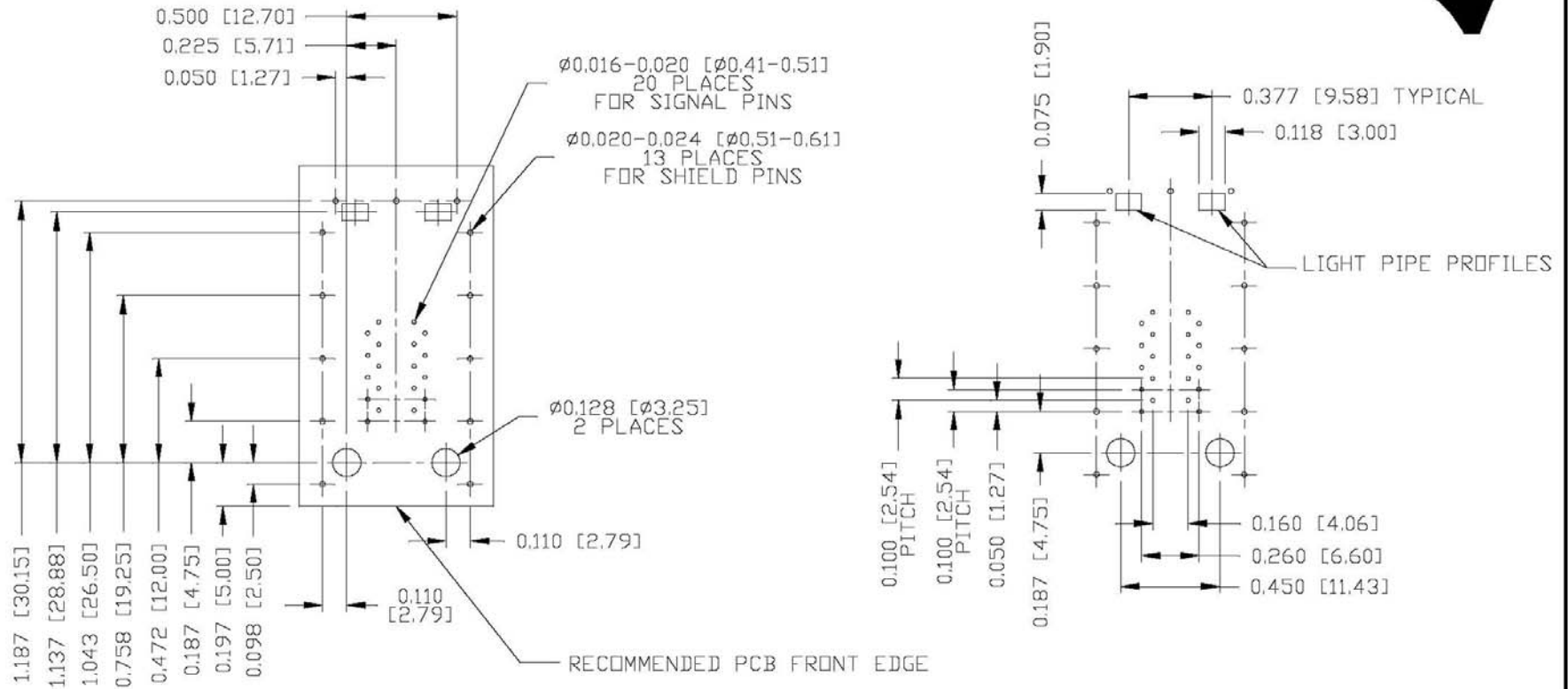
FILE NAME
08G0-281DGUA_PC.DWG

STANDARD DIM. TOL. IN INCH	[] METRIC DIM. AS REF.
.X	UNIT : INCH [mm]
.XX	SCALE : N/A
.XXX	±0.004
	SIZE : A4



THE INFORMATION CONTAINED HEREIN IS CONSIDERED 'PROPRIETARY' TO BEL FUSE INC. AND SHALL NOT BE COPIED, REPRODUCED OR DISCLOSED WITHOUT THE WRITTEN APPROVAL OF BEL FUSE INC.

RoHS



SUGGESTED FOOTPRINT
(COMPONENT SIDE VIEW)

REV. : PC PAGE : 5

ORIGINATED BY
ANTON LIAO
DATE 2019-08-13

DRAWN BY
LI QUANKUN
DATE 2019-08-13

TITLE
2X1 glgabit MagJack®
PRESS FIT
08G0-281D-GUA
PATENTED

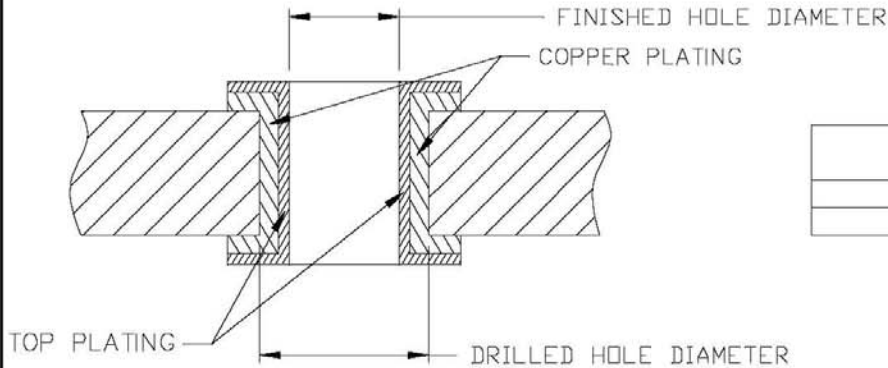
PART NO. / DRAWING NO.
08G0-281DGUA

FILE NAME
08G0-281DGUA_PC.DWG

STANDARD DIM. TOL. IN INCH	[] METRIC DIM. AS REF.
.X	UNIT : INCH [mm]
.XX	SCALE : N/A
.XXX	±0.004
	SIZE : A4



THE INFORMATION CONTAINED HEREIN IS CONSIDERED 'PROPRIETARY' TO BEL FUSE INC. AND SHALL NOT BE COPIED, REPRODUCED OR DISCLOSED WITHOUT THE WRITTEN APPROVAL OF BEL FUSE INC.



PLATED-THROUGH-HOLE	DRILLED HOLE DIAMETER	FINISHED HOLE DIAMETER
FOR SIGNAL PINS	0.022 [0.57]	0.016-0.020 [0.41-0.51]
FOR SHIELD PINS	0.026 [0.66]	0.020-0.024 [0.51-0.61]

PLATED-THROUGH-HOLE CROSS-SECTION

PLATING	THICKNESS IN MICRO-INCHES [MICRONS]
COPPER	1000-2000 [25-50]
TOP PLATING - USE ONE OPTION LISTED BELOW:	
HOT AIR SOLDER LEVELING (HASL) TIN-LEAD (Sn-Pb)	160-400 [4-10]
IMMERSION TIN (Sn)	20-40 [0.5-1.0]
ORGANIC SOLDERABILITY PRESERVATIVE (OSP)	10-20 [0.2-0.5]
IMMERSION GOLD (Au) OVER NICKEL (Ni) (ENIG)	5-20 [0.1-0.5] (Au) OVER 50-100 [1.2-2.5] (Ni)
TIN-LEAD (Sn-Pb)	400-1000 [10-25]
IMMERSION SILVER (Ag)	5-8 [0.10-0.15]

RECOMMENDED PLATED-THROUGH-HOLE CONSTRUCTION DETAILS FOR PRESS-FIT PINS.

ORIGINATED BY
ANTON LIAO
DATE 2019-08-13

DRAWN BY
LI QUANKUN
DATE 2019-08-13

TITLE
2X1 gigabit MagJack®
PRESS FIT
08G0-281D-GUA
PATENTED

PART NO. / DRAWING NO.
08G0-281DGUA

FILE NAME
08G0-281DGUA_PC.DWG

STANDARD DIM. TOL. IN INCH	[] METRIC DIM. AS REF.
.X	UNIT : INCH [mm]
.XX	SCALE : N/A
.XXX	SIZE : A4

REV. : PC	PAGE : 6
-----------	----------

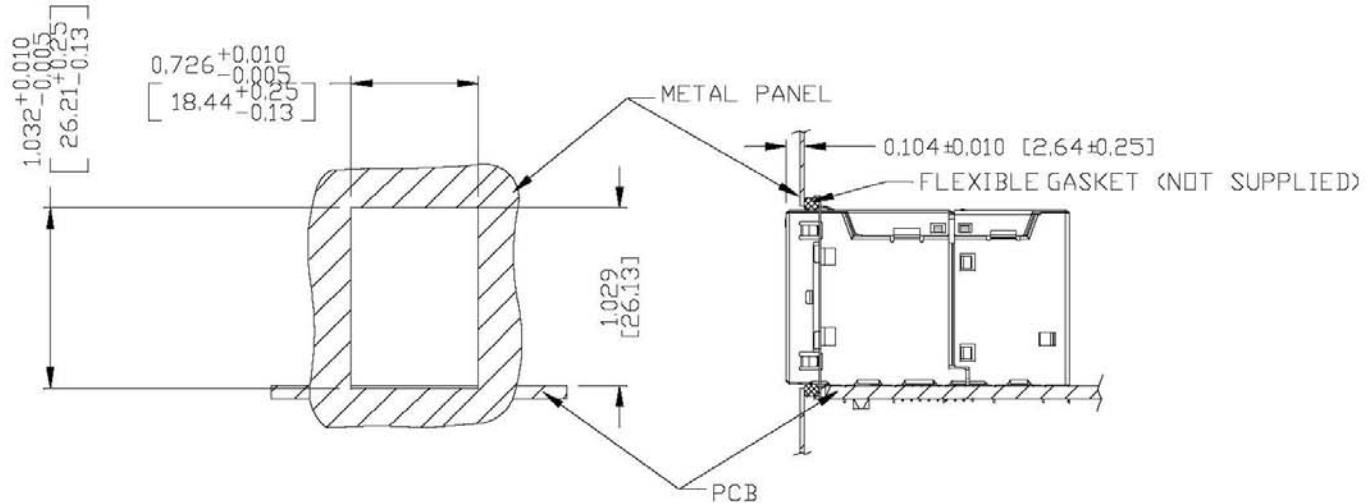
a bel group

THE INFORMATION CONTAINED HEREIN IS CONSIDERED 'PROPRIETARY' TO BEL FUSE INC. AND SHALL NOT BE COPIED, REPRODUCED OR DISCLOSED WITHOUT THE WRITTEN APPROVAL OF BEL FUSE INC.

RoHS



SUGGESTED PANEL OPENING



NOTES:

1. THE DISTANCE OF PANEL INSIDE SURFACE RELATIVE TO FRONT SURFACE OF PART IS ONLY A SUGGESTION. IN CASE THIS DISTANCE IS DIFFERENT, THE REQUIRED PANEL OPENING DIMENSIONS CHANGE ACCORDINGLY.
2. RECOMMENDED COMPRESSION OF THE FLEXIBLE GASKET MATERIAL OF 25%.
3. RECOMMENDED FLEXIBLE GASKET THICKNESS BEFORE COMPRESSION IS 0.103 INCH.
4. THE FLEXIBLE GASKET CAN BE ORDERD SEPARATELY VIA PART NUMBER 0080M1700-08.

PACKING INFORMATION

PACKING TRAY : 0200M9999-L7 (TOP)

0200M9999-L6 (BOTTOM)

PACKING QUANTITY : 21 PCS FINISHED GOODS PER TRAY.

7 TRAYS (147 PCS FINISHED GOODS) PER CARTON BOX.

REMARK : CARDBOARDS ARE PLACED BETWEEN LAYERS OF PACKING TRAY INSIDE CARTON BOX.
(INCLUDE THE UPPERMOST AND LOWERMOST TRAY)

REV. : PC PAGE : 7

ORIGINATED BY ANTON LIAO DATE 2019-08-13 DRAWN BY LI QUANKUN DATE 2019-08-13	TITLE 2X1 gigabit MagJack® PRESS FIT 08G0-281D-GUA PATENTED	PART NO. / DRAWING NO. 08G0-281DGUA FILE NAME 08G0-281DGUA_PC.DWG	STANDARD DIM.	[] METRIC DIM.	bel MAGNETIC SOLUTIONS a bel group
			TOL. IN INCH	AS REF.	
			.X	UNIT : INCH [mm]	
			.XX	SCALE : N/A	
			.XXX	±0.005	SIZE : A4