



THE INFORMATION CONTAINED HEREIN IS CONSIDERED "PROPRIETARY" TO BEL FUSE INC. AND SHALL NOT BE COPIED, REPRODUCED OR DISCLOSED WITHOUT THE WRITTEN APPROVAL OF BEL FUSE INC.

PRELIMINARY



**ELECTRICAL CHARACTERISTICS @ 25°C**

TURNS RATIO  
 TP1 1CT : 1CT  
 TP2 1CT : 1CT  
 TP3 1CT : 1CT  
 TP4 1CT : 1CT

INS. LOSS (MAX)  
 1MHz TO 20MHz -0.8 dB  
 50MHz -1.0 dB  
 200MHz -1.2 dB  
 400MHz -2.0 dB  
 500MHz -3.0 dB

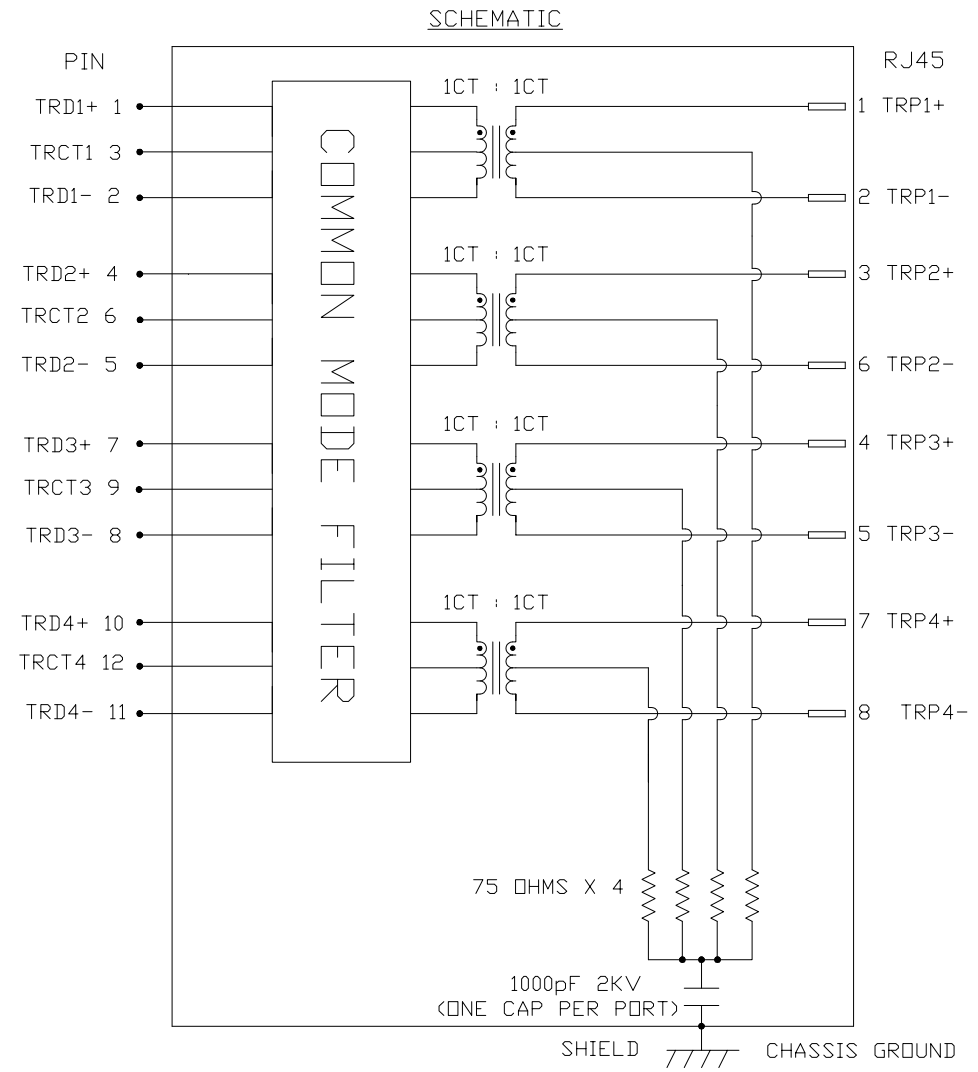
RET. LOSS (MIN) @ 100 OHMS  
 1MHz <math>\llcorner f \llcorner</math> 40MHz 16 dB MIN  
 40MHz <math>\llcorner f \llcorner</math> 400MHz 16-10LOG(f/40MHz) dB  
 400MHz <math>\llcorner f \llcorner</math> 500MHz 6-30LOG(f/400MHz) dB

CM TO CM REJ  
 1MHz - 500MHz -25 dB MIN

CM TO DM REJ  
 1MHz - 500MHz -30 dB MIN

HIPOT (Isolation Voltage): 2250VDC  
 100% OF PRODUCTION TESTED TO COMPLY WITH  
 IEEE 802.3 ISOLATION REQUIREMENTS.

OPERATING TEMPERATURE: -40°C TO +85°C.



REV. : 1 PAGE : 2

ORIGINATED BY  
 BILL LIU  
 DATE 2024-07-18  
 DRAWN BY  
 TERRY LIN  
 DATE 2024-07-18

TITLE  
 2X4 10 Gigabit MagJack®  
 PRESS FIT  
 PATENTED

PART NO. / DRAWING NO.  
 G37-88NV-010N  
 FILE NAME  
 G37-88NV-010N\_1.DWG

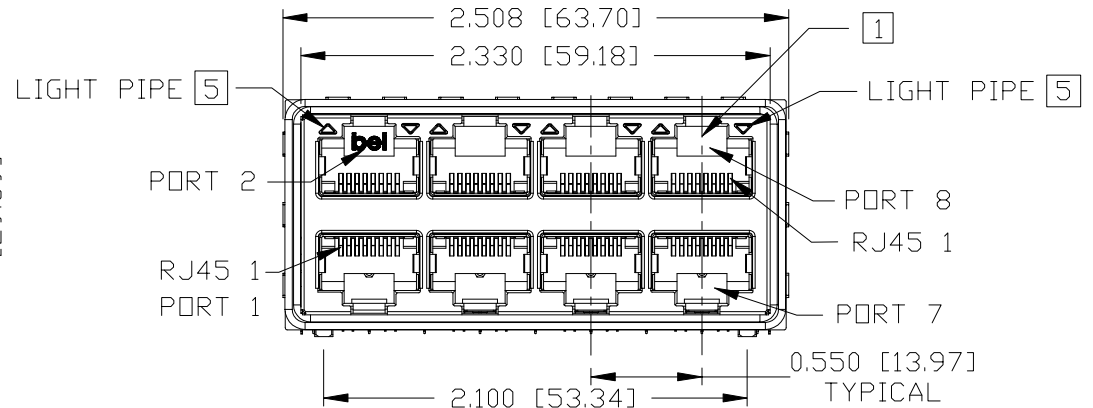
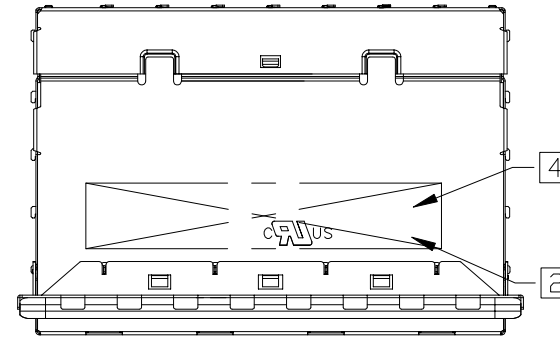
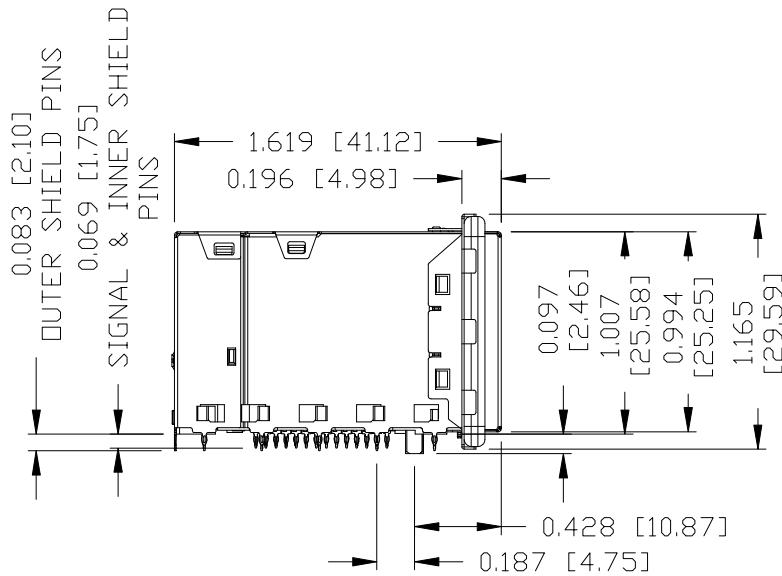
STANDARD DIM. TOL. IN INCH	[ ] METRIC DIM. AS REF.
.X	UNIT : INCH [mm]
.XX	SCALE : N/A
.XXX	SIZE : A4



THE INFORMATION CONTAINED HEREIN IS CONSIDERED "PROPRIETARY" TO BEL FUSE INC. AND SHALL NOT BE COPIED, REPRODUCED OR DISCLOSED WITHOUT THE WRITTEN APPROVAL OF BEL FUSE INC.

PRELIMINARY

RoHS



NOTES:

- PLASTIC HOUSING: THERMOPLASTIC HTN, BLACK. FLAMMABILITY RATING UL 94V-0
- CONTACT PLATING: 50 MICRO-INCH HARD GOLD PLATING OR EQUIVALENT
- OUTPUT PINS: NICKEL PLATED ON COPPER ALLOY PRESS FIT PINS
- METAL SHIELD: NICKEL OR TIN PLATED ON COPPER ALLOY.

- [1] JACK CAVITY CONFORMS TO FCC RULES AND REGULATIONS, PART 68 SUBPART F.
- [2] MARK PART WITH MFG LOGO, NAME, PART NUMBER AND DATE CODE.
- [3] THE PRODUCT IS RoHS COMPLIANT.
- [4] THE PRODUCT IS PATENTED. "PATENTED" MARKING IS ON THE TOP SURFACE. THE PATENT NUMBER ARE U.S. PAT. 7,429,195 & U.S. PAT. 6,840,817 & U.S. PAT. 7,123,117 AND U.S. PAT. 7,924,130.
- [5] THE FINISHED GOODS IS WITHOUT SMD LED. THE SMD LED IS PROVIDED BY CUSTOMER HERSELF. AND THE SMD LED IS MOUNTED ON CUSTOMER PCB.
- [6] RECOMMENDED MINIMUM CUSTOMER PCB THICKNESS IS 0.080 INCH.
- [7] DATUM C AND BASIC DIMENSION ESTABLISHED BY CUSTOMER.

UL RECOGNIZED - FILE #E169987.

ORIGINATED BY TONY YUAN	TITLE 2X4 10 Gigabit MagJack®
DATE 2024-07-18	
DRAWN BY RICK LI	PRESS FIT
DATE 2024-07-18	PATENTED

PART NO. / DRAWING NO. G37-88NV-010N	STANDARD DIM. TOL. IN INCH	[ ] METRIC DIM. AS REF.
FILE NAME G37-88NV-010N_1.DWG	.X .XX .XXX	UNIT : INCH [mm] SCALE : N/A
	±0.010	SIZE : A4

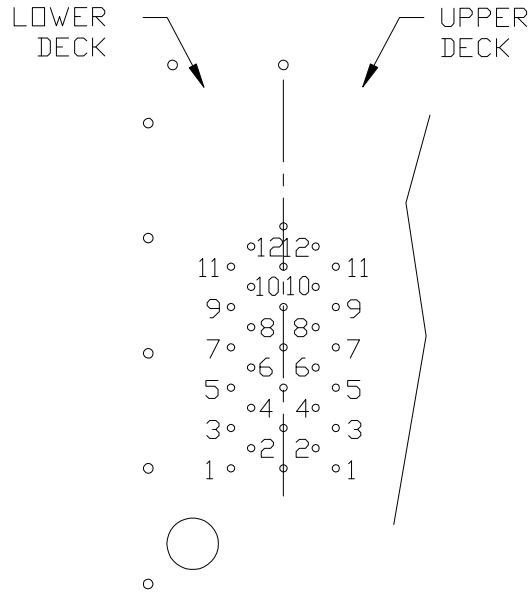
REV. : 1	PAGE : 3
----------	----------



THE INFORMATION CONTAINED HEREIN IS CONSIDERED "PROPRIETARY" TO BEL FUSE INC. AND SHALL NOT BE COPIED, REPRODUCED OR DISCLOSED WITHOUT THE WRITTEN APPROVAL OF BEL FUSE INC.

PRELIMINARY

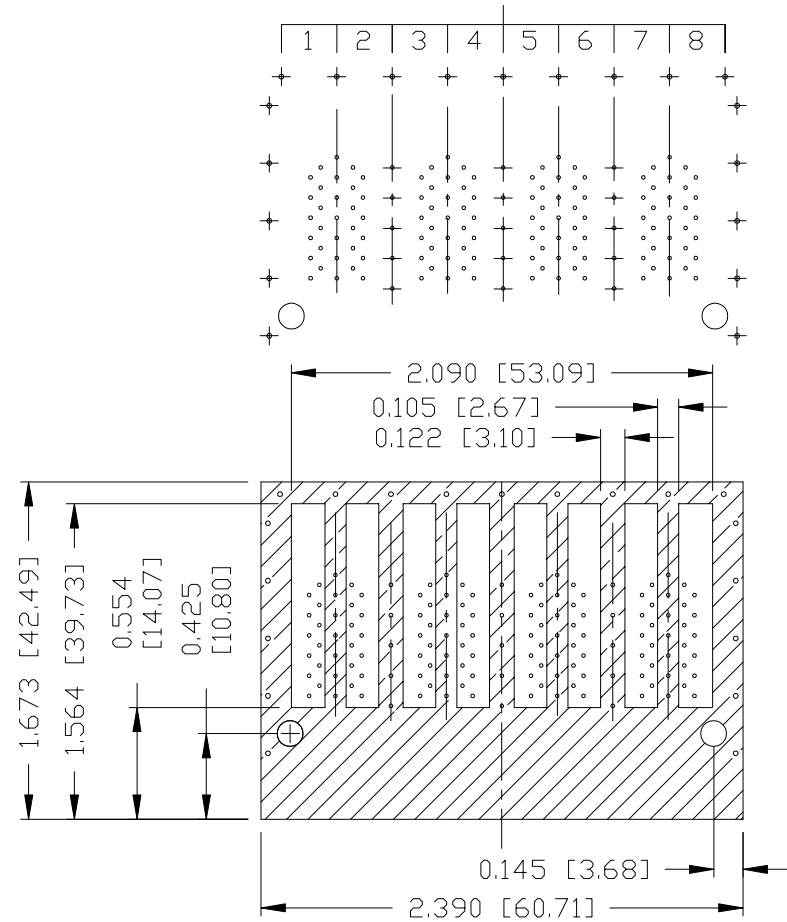
RoHS



PIN-OUT INFORMATION  
(COMPONENT SIDE VIEW)

10	TRD4+		
9	TRCT3		
8	TRD3-		
7	TRD3+		
6	TRCT2		
5	TRD2-		
4	TRD2+		
3	TRCT1		
2	TRD1-	12	TRCT4
1	TRD1+	11	TRD4-

PORT ASSIGNMENT  
(COMPONENT SIDE VIEW)



THE SHADED AREA ON THE CUSTOMER BOARD ARE RECOMMENDED TO BE CLEAR OFF ANY VIA HOLE OR COMPONENT PAD.

REV. : 1 PAGE : 4

ORIGINATED BY  
TONY YUAN  
DATE 2024-07-18

DRAWN BY  
RICK LI  
DATE 2024-07-18

TITLE  
2X4 10 Gigabit MagJack®  
PRESS FIT  
PATENTED

PART NO. / DRAWING NO.  
G37-88NV-010N

FILE NAME  
G37-88NV-010N\_1.DWG

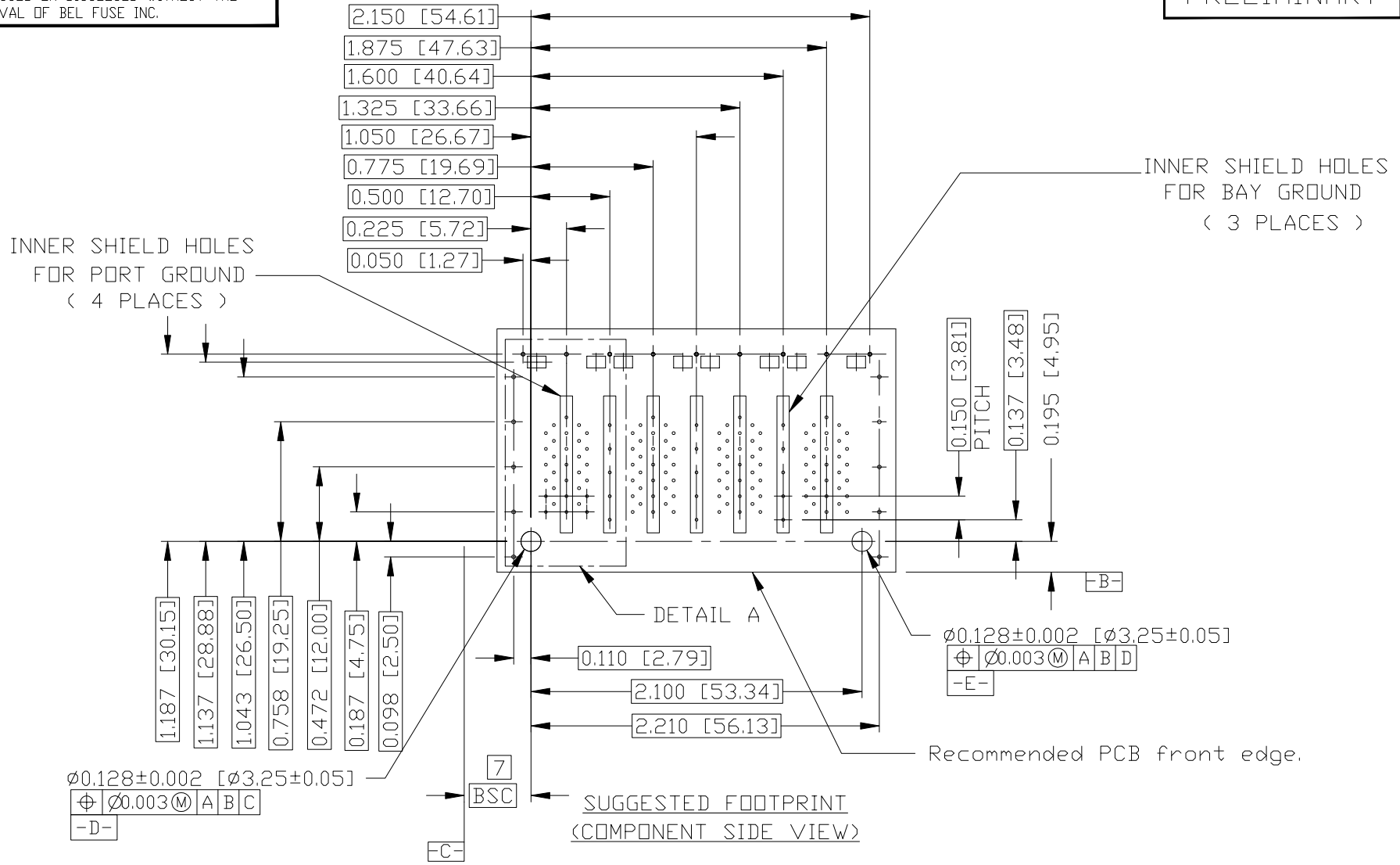
STANDARD DIM. [ ] METRIC DIM.  
TOL. IN INCH AS REF.

.X		UNIT : INCH [mm]
.XX		SCALE : N/A
.XXX	±0.004	SIZE : A4



THE INFORMATION CONTAINED HEREIN IS CONSIDERED "PROPRIETARY" TO BEL FUSE INC. AND SHALL NOT BE COPIED, REPRODUCED OR DISCLOSED WITHOUT THE WRITTEN APPROVAL OF BEL FUSE INC.

PRELIMINARY



ORIGINATED BY  
TONY YUAN  
DATE 2024-07-18  
DRAWN BY  
RICK LI  
DATE 2024-07-18

TITLE  
2X4 10 Gigabit MagJack®  
PRESS FIT  
PATENTED

PART NO. / DRAWING NO.  
G37-88NV-010N  
FILE NAME  
G37-88NV-010N\_1.DWG

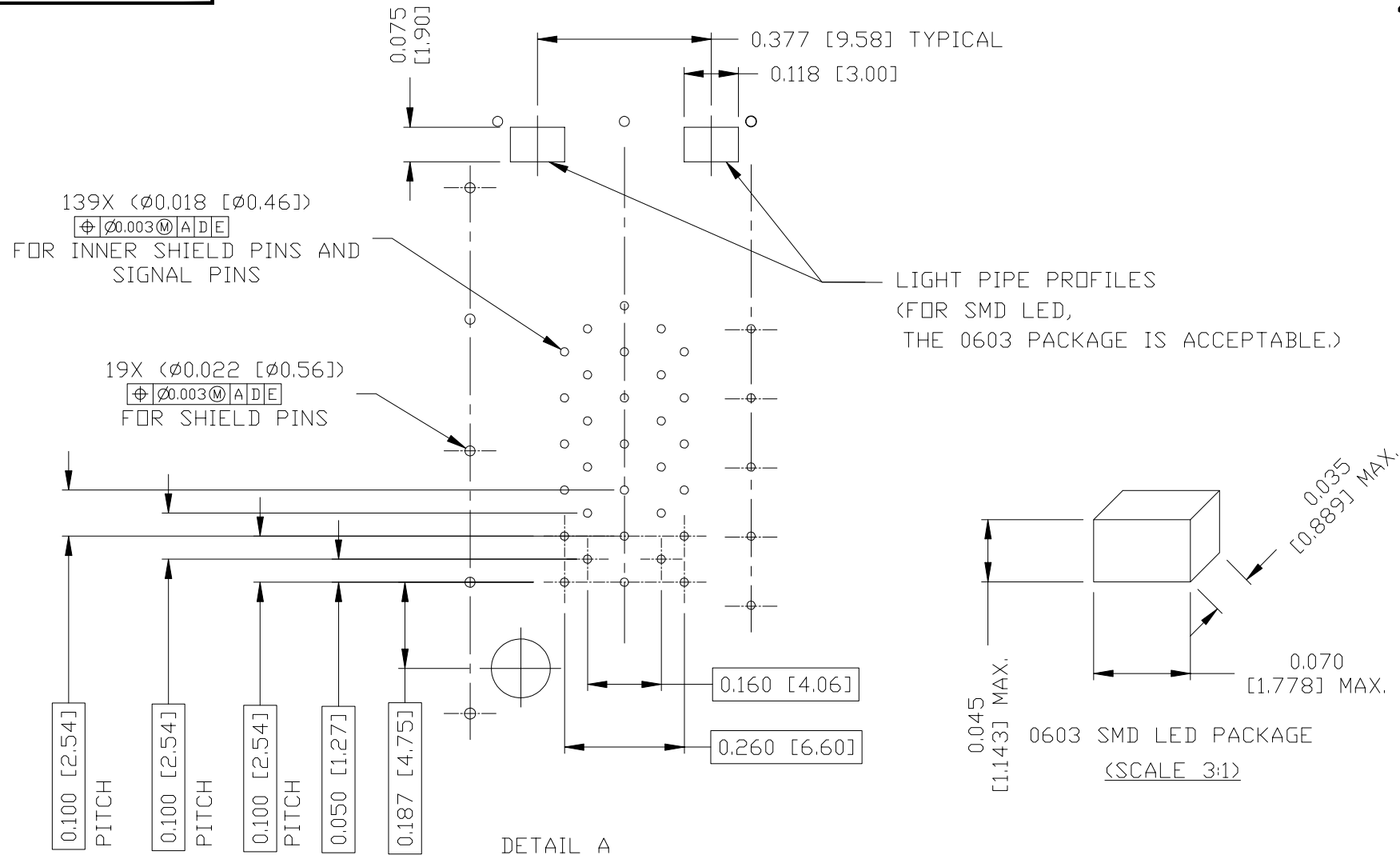
STANDARD DIM. TOL. IN INCH	[ ] METRIC DIM. AS REF.
.X	UNIT : INCH [mm]
.XX	SCALE : N/A
.XXX ±0.004	SIZE : A4

REV. : 1 PAGE : 5



THE INFORMATION CONTAINED HEREIN IS CONSIDERED "PROPRIETARY" TO BEL FUSE INC. AND SHALL NOT BE COPIED, REPRODUCED OR DISCLOSED WITHOUT THE WRITTEN APPROVAL OF BEL FUSE INC.

PRELIMINARY



ORIGINATED BY  
 TONY YUAN  
 DATE 2024-07-18

DRAWN BY  
 RICK LI  
 DATE 2024-07-18

TITLE  
 2X4 10 Gigabit MagJack®  
 PRESS FIT  
 PATENTED

PART NO. / DRAWING NO.  
 G37-88NV-010N

FILE NAME  
 G37-88NV-010N\_1.DWG

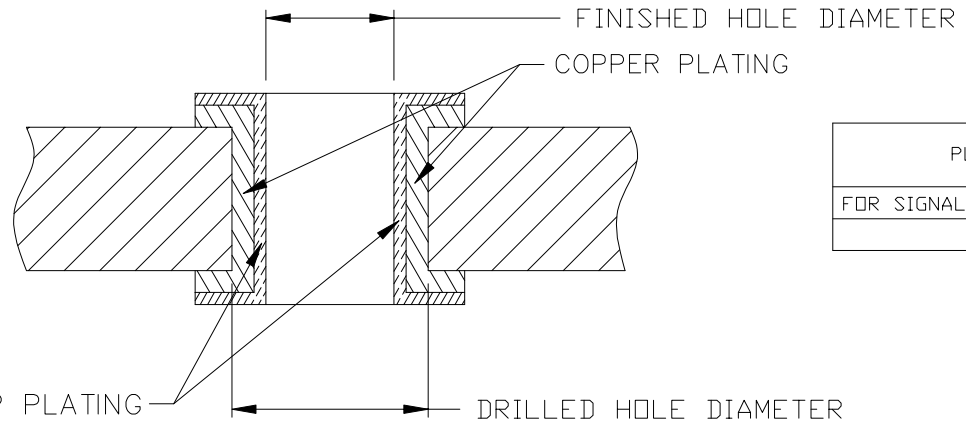
STANDARD DIM. TOL. IN INCH	[ ] METRIC DIM. AS REF.
.X	UNIT : INCH [mm]
.XX	SCALE : N/A
.XXX ±0.004	SIZE : A4

REV. : 1 PAGE : 6



THE INFORMATION CONTAINED HEREIN IS CONSIDERED "PROPRIETARY" TO BEL FUSE INC. AND SHALL NOT BE COPIED, REPRODUCED OR DISCLOSED WITHOUT THE WRITTEN APPROVAL OF BEL FUSE INC.

PRELIMINARY



PLATED-THROUGH-HOLE	DRILLED HOLE DIAMETER	FINISHED HOLE DIAMETER
FOR SIGNAL PINS AND INNER SHIELD PINS	0.022 [0.57]	<0.018 [0.46]> REF
FOR SHIELD PINS	0.026 [0.66]	<0.022 [0.56]> REF

PLATED-THROUGH-HOLE CROSS-SECTION

PLATING	THICKNESS IN MICRO-INCHES [MICRONS]
COPPER	1000-2000 [25-50]
TOP PLATING - USE ONE OPTION LISTED BELOW:	
HOT AIR SOLDER LEVELING (HASL) TIN-LEAD (Sn-Pb)	160-400 [4-10]
IMMERSION TIN (Sn)	20-40 [0.5-1.0]
ORGANIC SOLDERABILITY PRESERVATIVE (OSP)	10-20 [0.2-0.5]
IMMERSION GOLD (Au) OVER NICKEL (Ni) (ENIG)	5-20 [0.1-0.5] (Au) OVER 50-100 [1.2-2.5] (Ni)
TIN-LEAD (Sn-Pb)	400-1000 [10-25]
IMMERSION SILVER (Ag)	5-8 [0.10-0.15]

RECOMMENDED PLATED-THROUGH-HOLE CONSTRUCTION DETAILS FOR PRESS-FIT PINS

REV. :	1	PAGE :	7
--------	---	--------	---

ORIGINATED BY TONY YUAN DATE 2024-07-18
DRAWN BY RICK LI DATE 2024-07-18

TITLE  2X4 10 Gigabit MagJack®  PRESS FIT PATENTED
---

PART NO. / DRAWING NO. G37-88NV-010N
FILE NAME G37-88NV-010N_1.DWG

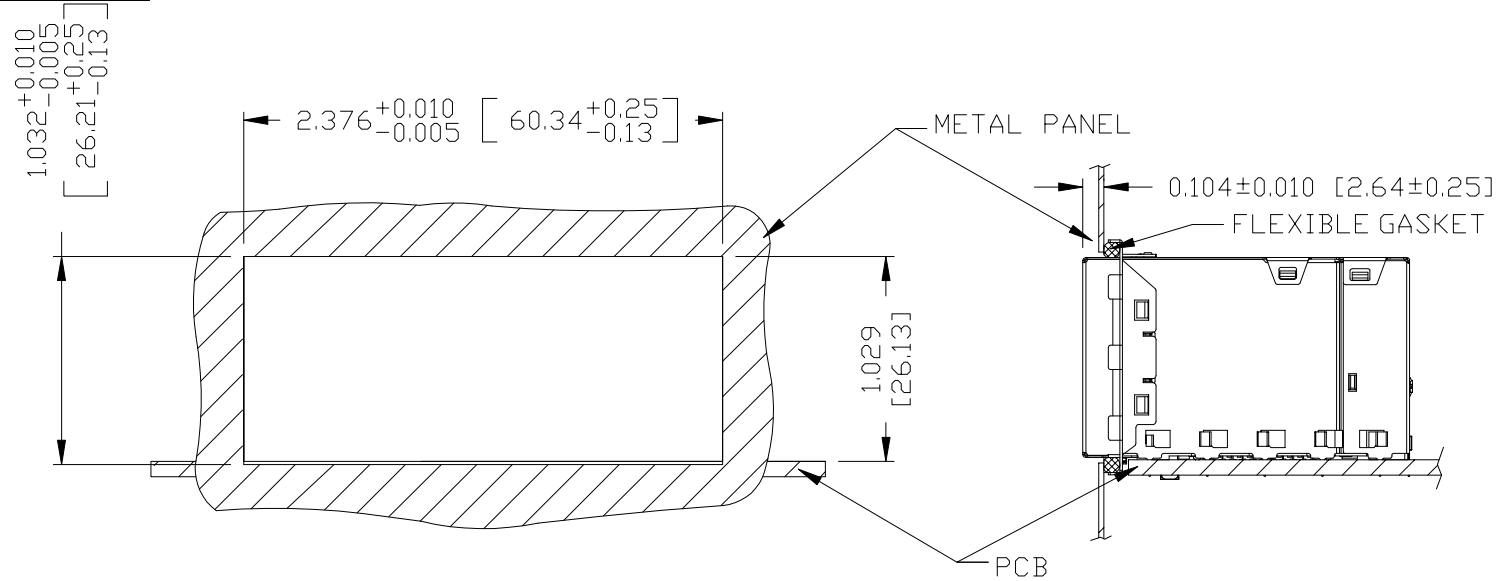
STANDARD DIM. TOL. IN INCH	[ ] METRIC DIM. AS REF.
.X	UNIT : INCH [mm]
.XX	SCALE : N/A
.XXX ±0.005	SIZE : A4



THE INFORMATION CONTAINED HEREIN IS CONSIDERED "PROPRIETARY" TO BEL FUSE INC. AND SHALL NOT BE COPIED, REPRODUCED OR DISCLOSED WITHOUT THE WRITTEN APPROVAL OF BEL FUSE INC.

SUGGESTED PANEL OPENING

PRELIMINARY



NOTE:

1. THE DISTANCE OF PANEL INSIDE SURFACE RELATIVE TO FRONT SURFACE OF PART IS ONLY A SUGGESTION. IN CASE THIS DISTANCE IS DIFFERENT, THE REQUIRED PANEL OPENING DIMENSIONS CHANGE ACCORDINGLY.
2. RECOMMENDED COMPRESSION OF THE FLEXIBLE GASKET MATERIAL OF 25%.
3. RECOMMENDED FLEXIBLE GASKET THICKNESS BEFORE COMPRESSION IS 0.103 INCH.
4. THE FLEXIBLE GASKET CAN BE ORDERD SEPARATELY VIA PART NUMBER 0080M1700-04.

PACKING INFORMATION

PACKING TRAY : 0200M9999-N1 (TOP)

0200M9999-T5 (BOTTOM)

PACKING QUANTITY : 12 PCS FINISHED GOODS PER TRAY.

7 TRAYS (84 PCS FINISHED GOODS) PER CARTON BOX.

REMARK : CARDBOARDS ARE PLACED BETWEEN LAYERS OF PACKING TRAY INSIDE CARTON BOX.  
(INCLUDE THE UPPERMOST AND LOWERMOST TRAY)

REV. :	1	PAGE :	8
--------	---	--------	---

ORIGINATED BY TONY YUAN DATE 2024-07-18	TITLE  2X4 10 Gigabit MagJack®  PRESS FIT PATENTED	PART NO. / DRAWING NO. G37-88NV-010N		STANDARD DIM. [ ] METRIC DIM. TOL. IN INCH AS REF.	
		FILE NAME G37-88NV-010N_1.DWG		.X	UNIT : INCH [mm]
				.XX	SCALE : N/A
DRAWN BY RICK LI DATE 2024-07-18			.XXX ±0.005	SIZE : A4	

