

# RED IS ORIGINAL

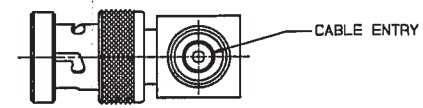
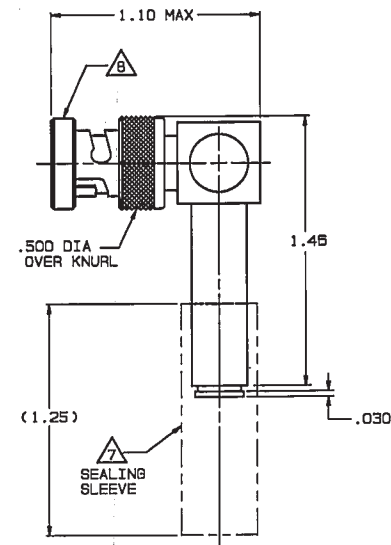
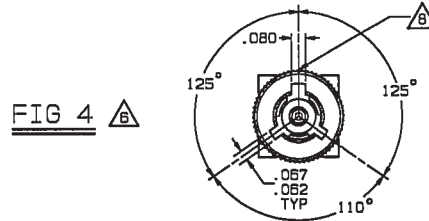
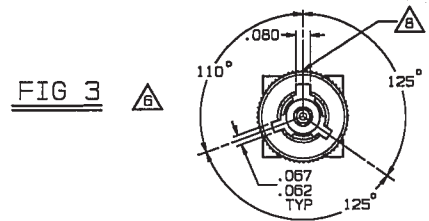
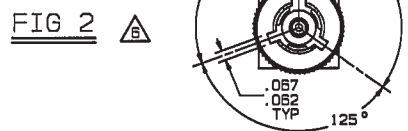
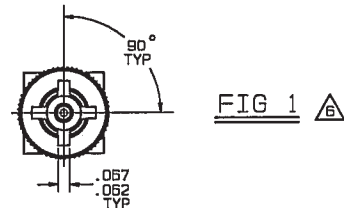
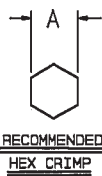
DISK # K1  
 DWG SIZE C  
 DATA CONTAINED IN THIS DOCUMENT IS PROPRIETARY TO TROMPETER ELECTRONICS INC. AND SHALL NOT BE DISCLOSED, COPIED OR USED FOR PROCUREMENT OR MANUFACTURE WITHOUT EXPRESS WRITTEN PERMISSION.

REVISIONS			310-0068		SH 1
REV	ED	DESCRIPTION	DWN	APPROVED	DATE
D	10054	PICTORIALLY CHANGED 1.00 FLARED SEALING SLEEVE TO STRAIGHT (1.25) LONG SEALING SLEEVE; GENERAL UPDATE	DKC	<i>DKC</i>	

DASH NO	MODEL NO	CENTER CONTACT/INTMD CONTACT TYPE	FIG NO
-1	PLR455ACFLP	SOCKET/PIN	1
-2	PLR455ACFLS	PIN/SOCKET	
-3	PLR455ACPP	SOCKET/PIN	2
-4	PLR455ACPS	PIN/SOCKET	
-5	PLR455ACRP	SOCKET/PIN	3
-6	PLR455ACRS	PIN/SOCKET	
-7	PLR455ACWP	SOCKET/PIN	4
-8	PLR455ACWS	PIN/SOCKET	

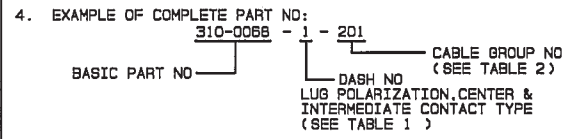
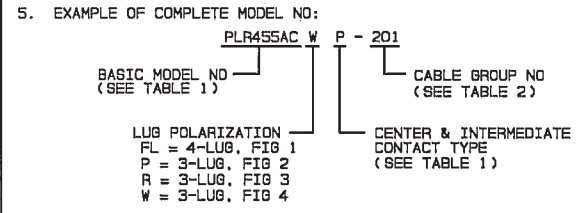
CABLE GROUP NO	CABLES ACCOMMODATED	A HEX	ASSEMBLE PER
-201	M17/176-00002	.255	TAI-170
-202	TWC-78-1, TROMPETER		
-203	TWC-124-1A, TROMPETER		
-204	10602, RAYCHEM		
-205	TWAC-78-1F2, TROMPETER		
-206	782500130, RAYCHEM		
-208	202-3927, MICRODOT		
-209	202-3942, MICRODOT		
-212	2524E014, RAYCHEM		
-217	6C875TM24H, GRUMMAN		
-218	EPD22188B, RAYCHEM		
-219	2526D1114, RAYCHEM		
-220	6C875RR1, GRUMMAN		
-221	10614, RAYCHEM		
-222	10613, RAYCHEM		
-223	HMS2-1149, HUGHES		

INCH	MM
.005	0.13
.03	0.76
.062	1.57
.067	1.70
.080	2.03
.255	6.48
.500	12.70
1.25	31.75
1.11	28.19
1.46	37.08



-3 -201 SHOWN

- $\Delta$  THE ONE WIDE (.080) SLOT LOCATION IS SHOWN BY A GREEN ASTERISK ON THE O.D. OF THE BAYONET SLEEVE GUARD-RING FOR -3 & SUBSEQUENT DASH NUMBERS
- $\Delta$  SEALING SLEEVE & CRIMP BUSHING SUPPLIED LOOSE WITH EACH CONNECTOR; EXCEPT SEALING SLEEVE NOT USED ON -205, -208 & -223
- $\Delta$  BOTTOM PORTION NOT SHOWN FOR CLARITY



- 3. CONCENTRIC TWINAX 4 PIECE ASSY, RIGHT ANGLE FULL CRIMP CABLE PLUG, SOCKET CENTER CONTACT AND PIN INTERMEDIATE CONTACT OR PIN CENTER CONTACT AND SOCKET INTERMEDIATE CONTACT
- 2. FINISH: TFS-1U (500 HRS SALT SPRAY; NICKEL)
- 1. ALL DIM ARE IN INCHES

QTY	DESCRIPTION	PART NUMBER	ITEM
TOL UNLESS SPECIFIED .XX ± .03 .XXX ± .005 .XXXX ANGLES: 0° 30'	<b>TROMPETER</b> RF connectivity	PLR455AC/FLP/FLS, PP/PS, RP/RS, WP/WS	
DWN DKC 12-3-92	MATERIAL	CODE IDENT	REV
CHK <i>DKC</i>	14949	310-0068	D
ENGR <i>DKC</i>	12/22/92	SCALE 2/1	DATE 1-21-88
NEXT ASSY	APPR <i>DKC</i>	SHEET	1 OF 2