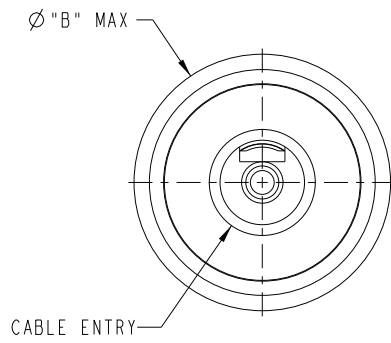
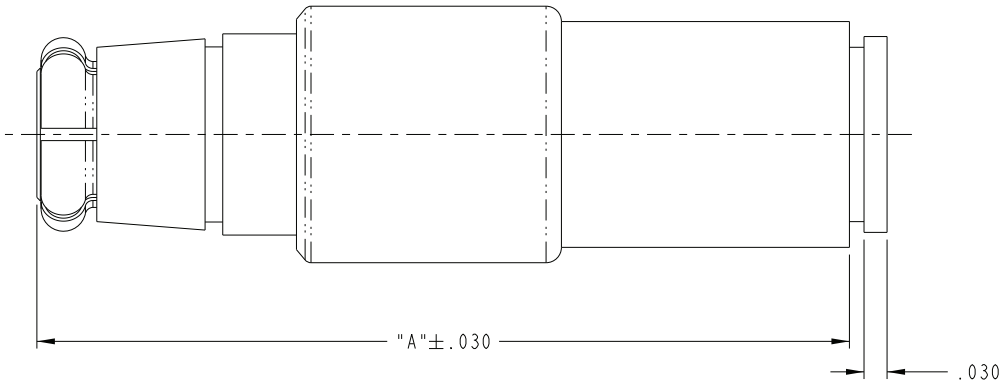


DASH NO	CABLES ACCOMMODATED	"A"	∅ "B"	"C"	ASSEMBLE PER
-201	MI7/178-00002	1.053	.339	.255	TA1-143
-202	TWC-78-1				
-213	TWC-78-2	1.259	.442	.344	TA1-144
-306	TRC-50-2 MI7/134-00002				TA1-173

ZONE	REV	ECO	DESCRIPTION	APPROVER	DATE
	J	12369			5/8/98
	K	53967		C. MONAHAN	1/16/12



-201 SHOWN

4. EXAMPLE OF COMPLETE MODEL NUMBER:

PL153AC-201

BASIC MODEL NUMBER

CABLE GROUP DASH NUMBER

3. EXAMPLE OF COMPLETE PART NUMBER:

310-0059-201

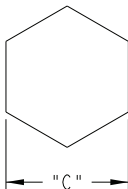
BASIC PART NUMBER

CABLE GROUP DASH NUMBER

2. PUSH ON SUBMINIATURE CONCENTRIC TWINAX (4 PIECE ASSY) AND TRIAX (6 PIECE ASSY) FULL CRIMP CABLE PLUG.

1. FINISH: NICKEL

RECOMMENDED HEX CRIMP



	MODEL NO.			
	CAGE CODE 14949		TITLE PL153AC	
<small>This PROPRIETARY Document is property of Cinch Connectivity Solutions. It is confidential in nature, non-transferable, and issued with the clear understanding that it is not to be copied or used without permission and is returnable upon demand.</small>	UNLESS OTHERWISE SPECIFIED UNITS: INCH	3RD ANGLE PROJECTION	DRAWING NO.	
	.XX ± .03 .XXX ± .005		DRAWN BY C. WALLACE DATE 2/8/12	REV. K FINISH
APPROVED BY C. MONAHAN DATE 2/9/12		SIZE C	DO NOT SCALE DRAWING SCALE 8:1	SHEET 1 OF 2