

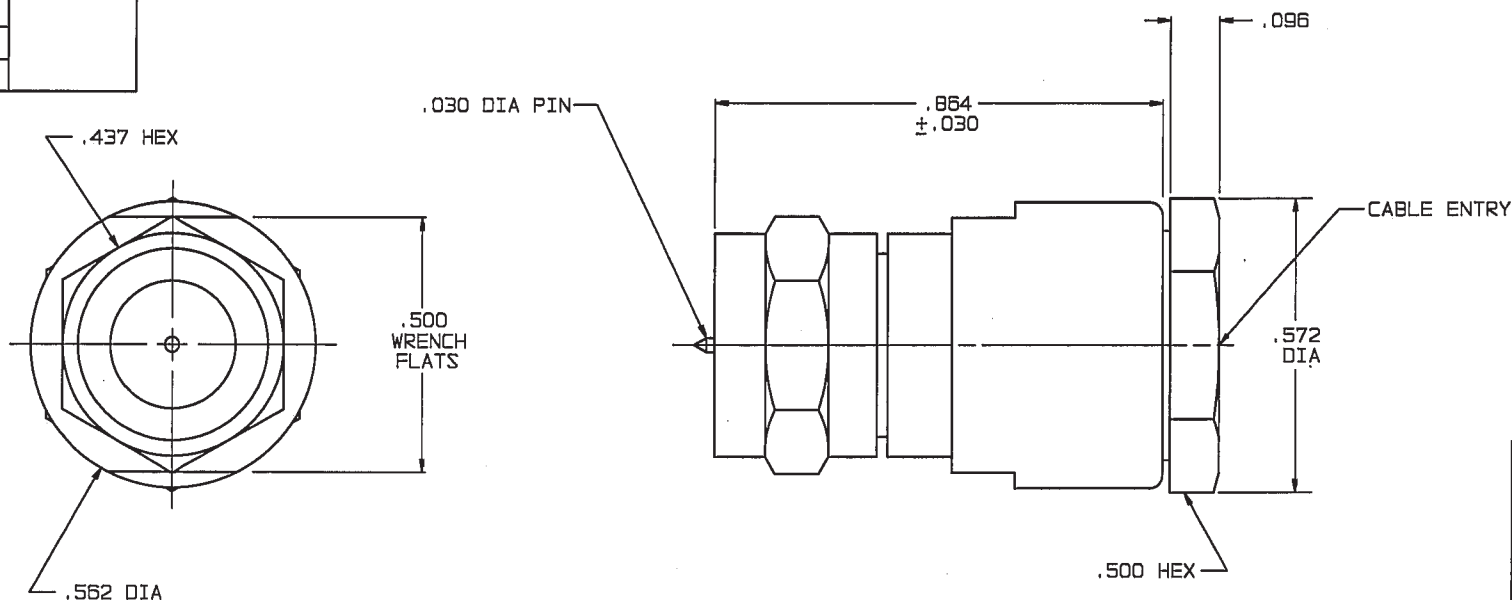
# RED INDICATES ORIGINAL

DASH NO	CABLES ACCOMMODATED	ASSEMBLE PER
-1	ESSEX 621-715	TAI-119
-2	RG-59	
-2A	BELDEN 8279	
-2B	WECO 730A	
-3	RGR-223	
-4	BELDEN 8218	
-5	RG-187	
-6	BELDEN 9231	
-6E	RG-6	
-34	HELIX CF18C0011030	
-41	RG-304	
-52	BELDEN 89120	

DWG SIZE **B**

DATA CONTAINED IN THIS DOCUMENT IS PROPRIETARY TO TROMPETER ELECTRONICS INC. AND SHALL NOT BE DISCLOSED, COPIED OR USED FOR PROCUREMENT OR MANUFACTURE WITHOUT EXPRESS WRITTEN PERMISSION.

REVISIONS			105-0181		SH 1
REV	EO	DESCRIPTION	DWN	APPROVED	DATE
M	11052	-34 DELETED ITEM 4 AND ADDED ITEM 3; SEE ECO	DKC	<i>Bm; fo</i>	3/1/95



INCH	MM
.005	0.13
.030	0.76
.096	2.44
.437	11.10
.500	12.70
.562	14.27
.572	14.53
.864	21.95

4. COUPLING PROOF TORQUE: 10 INCH-LBS. MIN
3. 75 OHM MALE TYPE F COAXIAL CABLE PLUG
2. FINISH: TFS-1A (NICKEL)
1. ALL DIM ARE IN INCHES

QTY	DESCRIPTION		PART NUMBER	ITEM		
TOL UNLESS SPECIFIED			PL130			
.XX ±	.005					
.XXX ±						
.XXXX ±						
ANGLES ±						
DWN	DKC	2-24-95	MATERIAL	CODE IDENT	DRAWING NO.	REV
CHK	<i>Bm</i>	2-28-95	—	14949	105-0181	M
ENGR	—	—				
105-0944	APPR	<i>fo</i>	2/28/95	SCALE 4/1	DATE 6-6-72	SHEET 1 OF 2