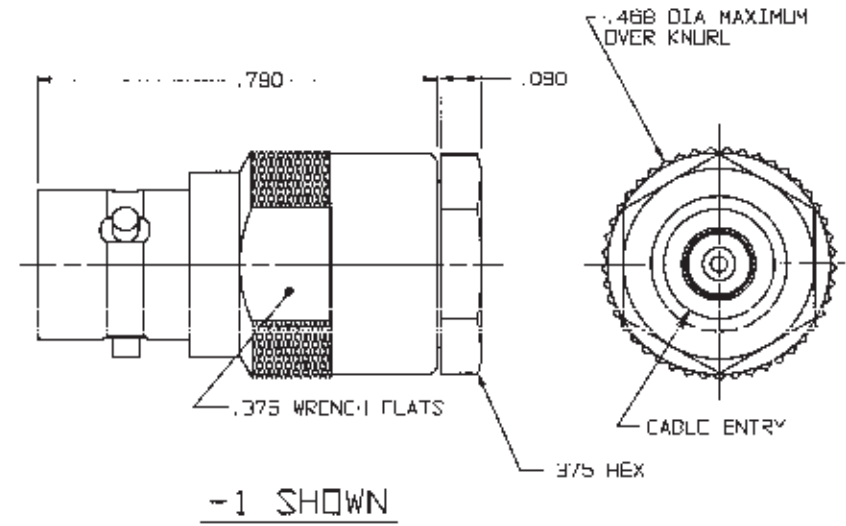
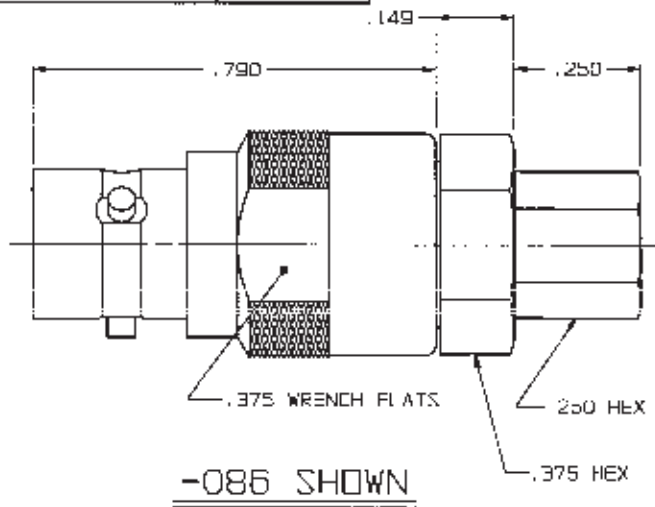


# RED INDICATES ORIGINAL

CASH NO	CABLES ACCOMMODATED	ASSEMBLY PER	INLH	PM
-1	RG-58	TAI-135	.005	0.13
-2	RG-59		.060	2.03
-2A	B279 BELDEN		.149	3.78
-2B	730A AT&T	TAI-10B	.250	6.35
-3	RG-223	TAI-135	.375	9.53
-4	RG-122		.468	11.89
-5	RG-174		.790	20.07
-5A	RG-196			
-22	RG-180			
-31	GRIMMAN GCR755P:	TAI-130		
-36	CXN1362; GDRE			
-086	RG-405			
-141	RG-402			

DWG SIZE: **B**  
 DATA CONTAINED IN THIS DOCUMENT IS PROPRIETARY TO TROMPETER ELECTRONICS, INC. AND SHALL NOT BE DISCLOSED, COPIED OR USED FOR PROCUREMENT OR MANUFACTURE WITHOUT EXPRESS WRITTEN PERMISSION.

REVISIONS			1-0137		SH 1
RCV	ECO	DESCRIPTION	DWN	APPROVED	DATE
M	118/5	REVISED, REDRAWN AND GENERAL UPDATE. ADDED -36; DRAWING NUMBER WAS 1000-0137, SEE ECO	DKC		10/12/86



- NOT WRENCH CRIMP
3. FEMALE TYPE TPS COAXIAL JACK
  2. FINISH: TFS-1A (NICKEL)
  1. ALL DIMENSIONS ARE IN INCHES

QTY	DESCRIPTION	PART NUMBER	ITEM
TOL UNLESS SPECIFIED .XX ± .XXX ±.005 .XXXX ± ANGLES		CJ50	
DWN	DKC 10-11-86	MATERIAL	CODE IDENT
CHK			14949
ENGR		DRAWING NO.	REV
APPR		1-0137	M
NEXT ASSY	SCALE 4/1	DATE 1-17-86	SHEET 1 OF 2