

DISK #	DWG SIZE	DATA CONTAINED IN THIS DOCUMENT IS PROPRIETARY TO TROMPETER ELECTRONICS INC. AND SHALL NOT BE DISCLOSED, COPIED OR USED FOR PROCUREMENT OR MANUFACTURE WITHOUT EXPRESS WRITTEN PERMISSION.	REVISIONS		3-0105	SH 1		
H10	C		REV	EO	DESCRIPTION	DWN	APPROVED	DATE
			F	9320	-7, -23, -24A, -25A, -26, -32, -33, -42, -43, -56, -57, -59, -60, -64, ASSY INSTRUCTIONS WAS TAI-104	DKC	B.M. <i>[Signature]</i>	5/29/91

DASH NO	CABLES ACCOMMODATED	ASSEMBLE PER	A DIA
-7	TRC-50-2/TRC-75-2	TAI-189	.274
-9	TWC-78-2/TWC-124-2	TAI-102	.285
-23	250-3884, MICRODOT	TAI-189	.183
-24	202-3934, MICRODOT	TAI-102	.191
-24A	9530A5117, RAYCHEM	TAI-189	.200
-25	GEEIA, GERMANY	TAI-102	.285
-25A	5021H5331, RAYCHEM	TAI-189	.285
-26	7028A5518, RAYCHEM		.183
-27	202-3927, MICRODOT		.145
-29	TWC-78-1/TWC-124-1A	TAI-102	.191
-30	761A, W.E.CO/8441, BELDEN		.235
-32	TRC-50-1		.191
-33	TRC-75-1		.217
-42	21-204, ESSEX 4463, CONSOLIDATED	TAI-189	.300
-43	250-4044/250-4045 293-3930, MICRODOT		.200
-45	M27500-22TE2T14 1100-66F, STANDARD		.183
-47	M17/176-00002	TAI-102	.164
-49	TWAC-78-1F2		.132
-55	89272, BELDEN		.250
-56	6C8756C1, GRUMMAN	TAI-189	.191
-57	6C8756B1, GRUMMAN		
-58	6C875TM24H, GRUMMAN	TAI-102	.198
-59	6C875LNI, GRUMMAN		
-60	M17/177, THERMATICS 380-10045, BOEING	TAI-189	.217
-64	7528A5314, RAYCHEM		.183

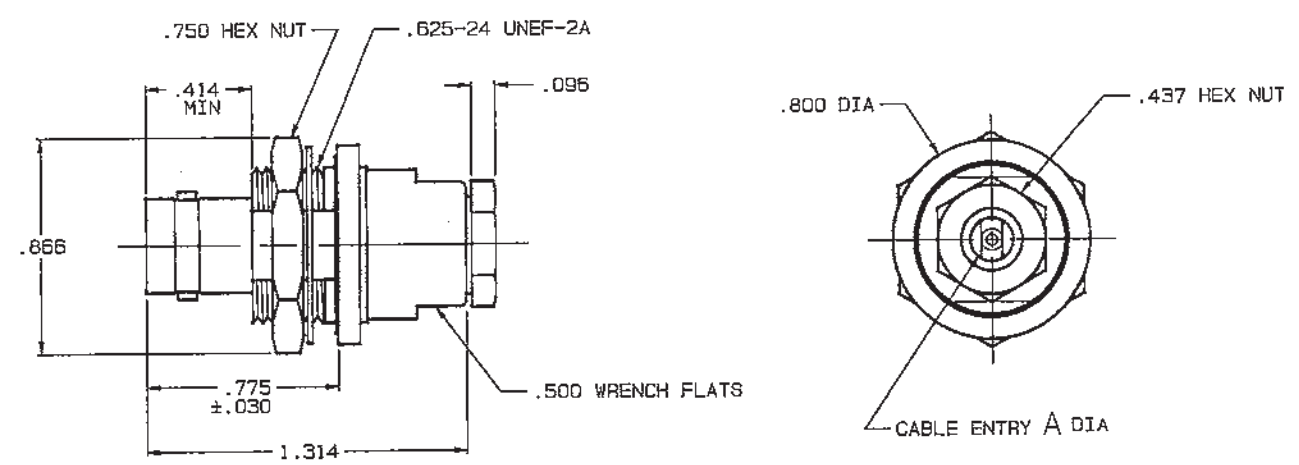


FIG 1  $\Delta$   
-9 SHOWN

INCH	MM	INCH	MM
.005	0.13	.281	7.14
.030	0.76	.284	7.21
.096	2.44	.285	7.24
.125	3.18	.300	7.62
.132	3.35	.414	10.52
.140	3.56	.437	11.10
.145	3.68	.500	12.70
.164	4.17	.630	16.00
.183	4.65	.635	16.13
.191	4.85	.750	19.05
.198	5.03	.775	19.69
.200	5.08	.800	20.32
.217	5.51	.866	22.00
.235	5.97	1.314	33.38
.274	6.96	1.846	46.89

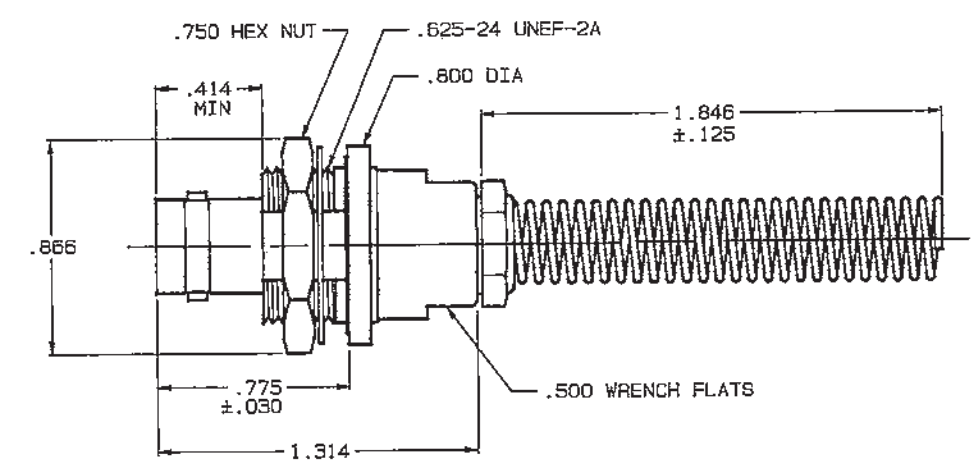
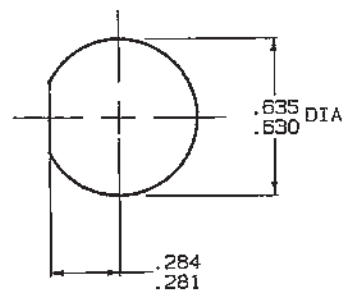


FIG 2  $\Delta$   
-9 SHOWN



RECOMMENDED  
PANEL CUTOUT

$\Delta$  IF BEND RELIEF SPRING REQUIRED (FIG 2)  
ADD SUFFIX "BR" TO MODEL NO

4. CONCENTRIC TWINAX/TRIAX 2 LUG TRB INSULATED BULKHEAD MOUNT CABLE RECEPTACLE
3. MAX PANEL THK .140
2. FINISH: IFS-1A (NICKEL)
1. ALL DIM ARE IN INCHES

QTY	DESCRIPTION	PART NUMBER	ITEM
TOL UNLESS SPECIFIED .XX ± .XXX ±.005 .XXXX ± ANGLES ±	<b>TROMPETER</b> RF connectivity	BJ74TL/BJ74TLBR	
DWN	DKC	5-14-91	MATERIAL
CHK	B.M.	5-27-91	CODE IDENT
ENGR			DRAWING NO.
APPR			REV
305-0515	ENGR		14949
NEXT ASSY	APPR		3-0105
		SCALE 2/1	DATE 4/13/84
			SHEET 1 OF 2

RED INDICATES ORIGINAL