

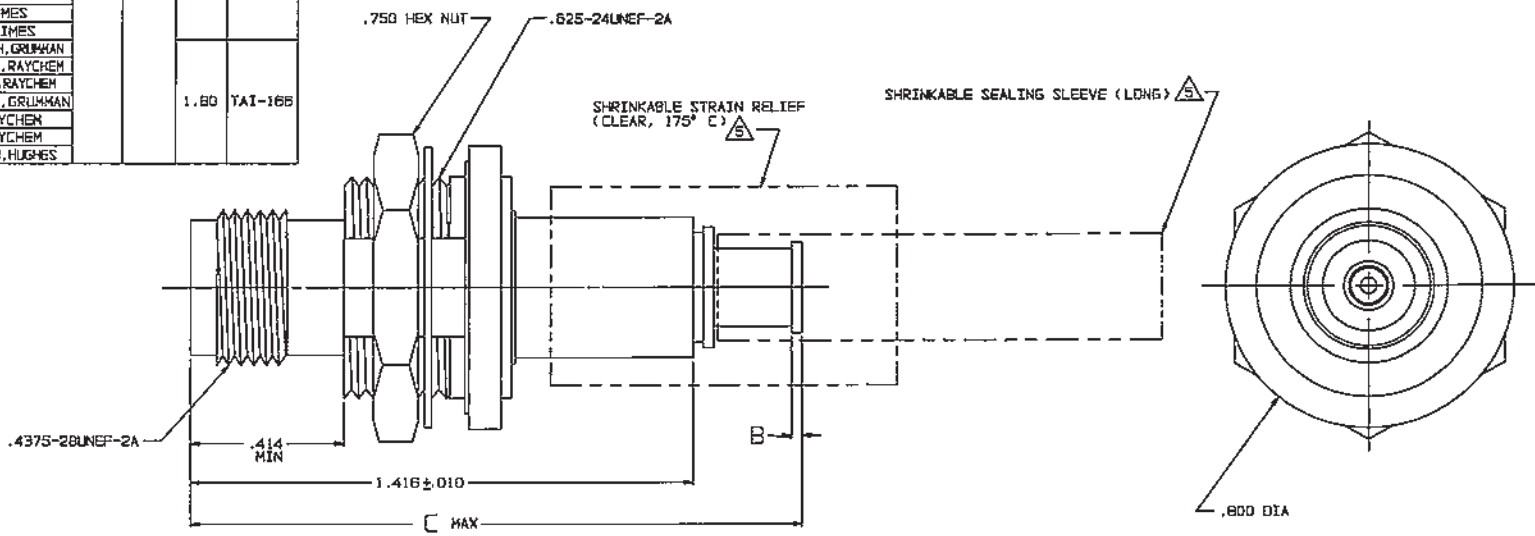
RED INDICATES ORIGINAL

DWG SIZE C	DATA CONTAINED IN THIS DOCUMENT IS PROPRIETARY TO TROMPETER ELECTRONICS INC. AND SHALL NOT BE DISCLOSED, COPIED OR USED FOR PROCUREMENT OR MANUFACTURE WITHOUT EXPRESS WRITTEN PERMISSION.			REVISIONS		3-0204	SH 1
	REV	EQ	DESCRIPTION	DWN	APPROVED	DATE	
	R	12084	-305 TAI-21B WAS TAI-16B; ADDED -308 & -309; SEE ECD	DKC	<i>JJM</i>	8/26/97	

DASH NO	CABLES ACCOMMODATED	A HEX	B DIM	C MAX	ASSEMBLE PER
-201	K17/176-00002	.344	.030	1.60	TAI-16B
-202	TWC-78-1				
-203	TWC-124-1A				
-204	10602, RAYCHEM				
-205	TWAC-78-1F2				
-206	782600130, RAYCHEM				
-207	B3310, BELDEN				
-208	202-3827, MICRODOT				
-209	202-3942, MICRODOT				
-210	B451, BELDEN				
-211	202-3934, MICRODOT	.344	.030	1.55	TAI-13B
-212	2524E0114, RAYCHEM				
-213	TWC-78-2				
-214	TWC-124-2				
-215	BL982, TIMES	.344	.030	1.60	TAI-16B
-216	BL1242, TIMES				
-217	GC875TH24H, GRUHMANN				
-218	EDP221688, RAYCHEM				
-219	252601114, RAYCHEM				
-220	GC875RR1, GRUHMANN				
-221	10814, RAYCHEM				
-222	10813, RAYCHEM				
-223	MS2-1149, HUGHES				

DASH NO	CABLES ACCOMMODATED	A HEX	B DIM	C MAX	ASSEMBLE PER
-301	GC875GCI, GRUHMANN	.344	.030	1.60	TAI-16B
-302	GC875GB1, GRUHMANN				
-303	7528A5914, RAYCHEM				
-304					
-305	K17/177-00001, THERMATICS				
-306	TRC-50-2 M17/134-00002	.344	.030	1.60	TAI-21B
-307	TRC-75-1				
-308	TRC-75-2				
-309	TRC-50-1				

INCH	MM
.005	0.13
.010	0.25
.030	0.76
.140	3.55
.281	7.14
.284	7.21
.344	8.74
.414	10.52
.630	16.00
.635	16.13
.750	19.05
.800	20.32
1.00	25.40
1.25	31.75
1.416	35.97
1.55	39.37
1.75	44.45
1.80	45.72

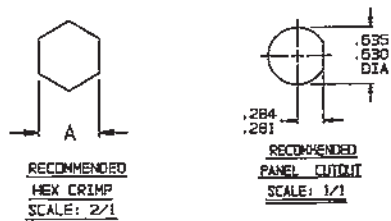


-202 SHOWN

- S** 1 SHRINKABLE STRAIN RELIEF AND/OR SHRINKABLE SEALING SLEEVE SUPPLIED LOOSE AS FOLLOWS:
- a. CABLE GROUPS -201 THROUGH -210, -217 THROUGH -303, -305, -307 & -309
 - 1 SHRINKABLE STRAIN RELIEF (1.00 LONG)
 - 1 SHRINKABLE SEALING SLEEVE (1.25 LONG)
 - b. CABLE GROUPS -211 THROUGH -218 AND -308 & -309
 - 1 SHRINKABLE STRAIN RELIEF (1.75 LONG)
4. MAX PANEL THK .140
3. CONCENTRIC TWIAX/TRIAX TRT, FULL CRIMP INSULATED BULKHEAD MOUNT CABLE RECEPTACLE
2. FINISH: TFS-1A (NICKEL)
1. ALL DIM ARE IN INCHES

B. EXAMPLE OF COMPLETE MODEL NO:
 BJB74C-201

BASIC MODEL NO. _____ CABLE GROUP DASH NO. _____



QTY	DESCRIPTION	PART NUMBER	ITEM
TIL UNLESS SPECIFIED	TROMPETER RF connectivity	BJB74C	
DWN	DKC B-1-97	MATERIAL	CODE IDENT
CHK	<i>JJM</i>	14949	DRAWING NO. 3-0204
ENGR			REV R
APPR	<i>JJM</i>	SCALE 4/1	DATE 11/11/85 SHEET 1 OF 2

NEXT ASSY _____