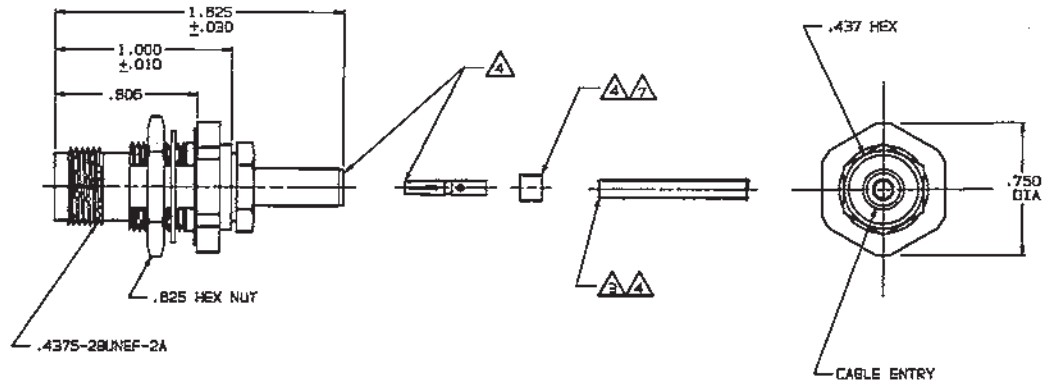


RED INDICATES ORIGINAL

DWS SIZE C	DATA CONTAINED IN THIS DOCUMENT IS PROPRIETARY TO TROMPETER ELECTRONICS INC. AND SHALL NOT BE DISCLOSED, COPIED OR USED FOR REPRODUCTION OR MANUFACTURE WITHOUT EXPRESS WRITTEN PERMISSION.			REVISIONS		1-0047	SH 1
	REV	EQ	DESCRIPTION	DWN	APPROVED	DATE	
	L	10804	SH 2, -001 ITEM 39 WAS ITEM 29) SEE ECO	DKC	<i>BW, F&R</i>	7/1/94	

DASH NO	CABLES ACCOMMODATED	A HEX	ASSEMBLE PER
-001	RG-178, -196	.178	
-002	HEWLETT PACKARD 8120-1107	.107	
-003	RG-174, -188, -316	.178	
-004	RG-179, -187		
-005	NORTHERN ELECTRIC DBL-SHLD RG-188	.197	
-006	GRUMMAN-GC875GPI DBL-SHLD RG-187		
-007	275-3991 MICRODOT		
-008	RG-195, -180 421-111 ESSEX		TAI-123
-009	8218 BELDEN YR23023 BELDEN 21-597 ESSEX	.178	
-010	RG-122		
-011	RG-58, -141, -303 21-537 ESSEX	.213	
-012	RG-55, -142, -223 RG-400		
-013	RG-59		
-013A	TCC-75-2	.255	
-013B	RG-62		TAI-186
-014	8212 BELDEN		TAI-123
-015	730A AT&T	.260	
-015A	RG-71		TAI-185
-016	724 AT&T 8281 BELDEN	.324	
-017	RG-6	.344	
-018	9268 BELDEN	.253	TAI-123
-019	8279 BELDEN		
-020	9248 BELDEN	.290	
-021	88240 BELDEN	.213	
-022	88241, 88268 BELDEN	.255	TAI-186
-023	88108 BELDEN		
-024	88120 BELDEN	.290	
-025	734A, AT&T	.255	TAI-123
-026	735A, AT&T	.178	
-027	KS19224LS, AT&T		



-001 SHOWN

INCH	MM
.005	0.13
.010	0.25
.030	0.76
.178	4.52
.187	5.00
.213	5.41
.218	5.54
.221	5.61
.255	6.48
.260	7.37
.324	8.23
.344	8.74
.437	11.10
.505	12.69
.510	12.69
.625	15.88
.750	18.05
.806	20.47
1.000	25.40
1.825	41.28

⚠ FOR CABLE GROUP -011 SUPPLY 1 EA ACCD11 FOR CABLE GROUPS -013, -013A & -013B SUPPLY 1 EA ACCD13 MAY BE ASSEMBLED TO CABLE/CONNECTOR ASSY USING 3M SCOTCHGRIP NO. 1099 PLASTIC ADHESIVE, OR EQUIV

⚠ IF PLASTIC STRAIN RELIEF REQUIRED, ADD SUFFIX "BT" TO MODEL NO (ONLY AVAILABLE WITH -011, -013, -013A & -013B)

⚠ CONTACT SUPPORT BUSHING REQUIRED ON -013B, -015A & -022 ONLY

6. MAX PANEL THK .218

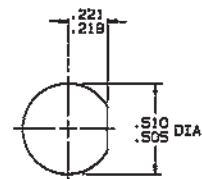
5. RF COAXIAL THD FULL CRIMP BULKHEAD CABLE RECEPTACLE (EQUIV MIL-CAT "D")

⚠ CONTACT, SLEEVE, CRIMP SLEEVE & CONTACT SUPPORT BUSHING ARE SUPPLIED LOOSE

⚠ SLEEVE REQUIRED ON -001 THRU -007 AND -027 ONLY

2. FINISH: TFS-1A (NICKEL)

1. ALL DIM ARE IN INCHES



QTY	DESCRIPTION	PART NUMBER	ITEM
TOL UNLESS SPECIFIED INCH ± .005 MILLIMETER ± .00005	TROMPETER RF connectivity	BJ249	
DWN	DKC 8-17-94	MATERIAL	CODE IDENT
CHK	<i>BW</i> 8-27-94	14949	DRAWING NO. 1-0047
ENGR			REV L
APPR	<i>F&R</i> 8/31/94	SCALE 2/1	DATE 10/25/92 SHEET 1 OF 2