

MODEL NUMBER  
TRM-2092-MC-SMA-02

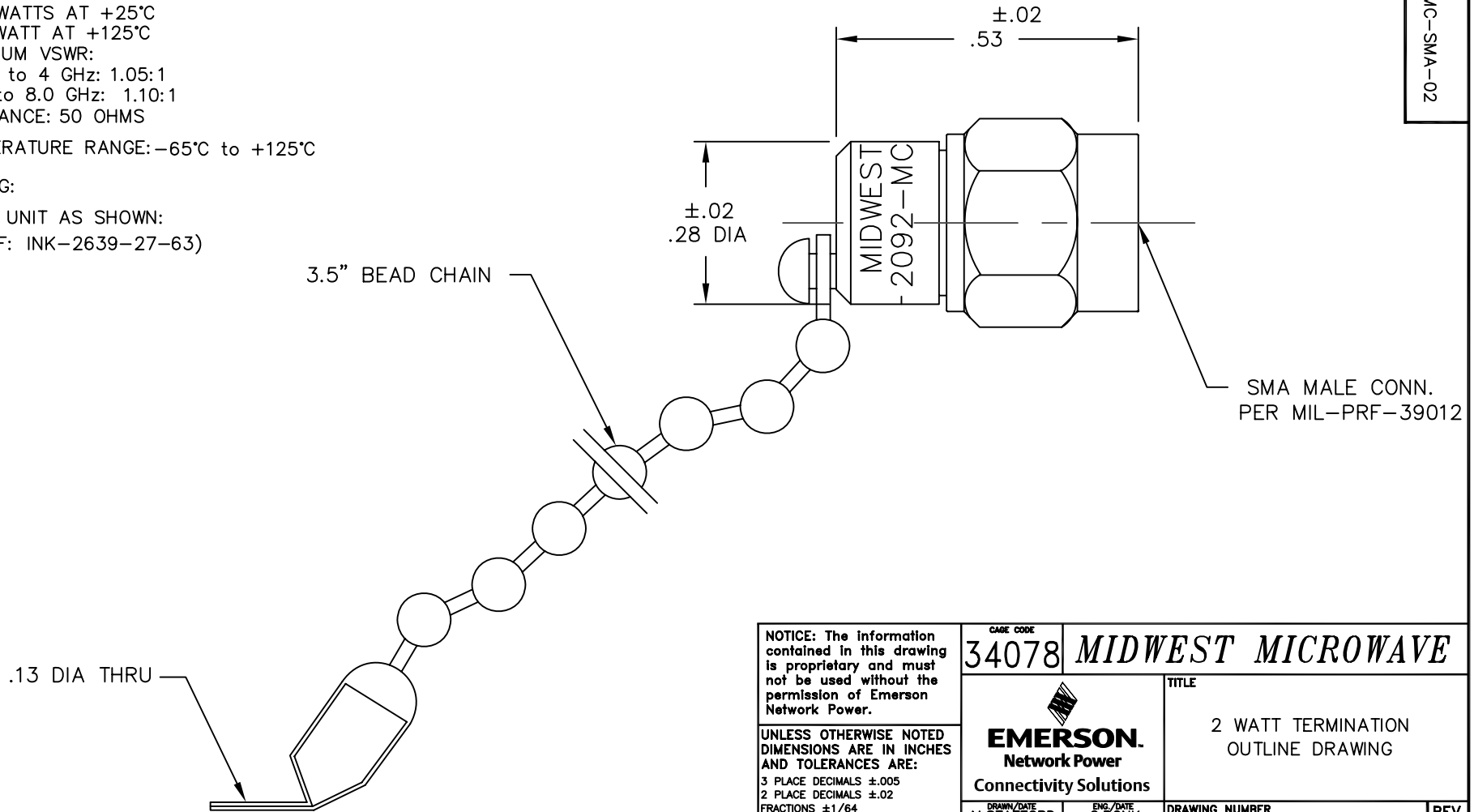
NOTES:

1.0 ELECTRICAL SPECIFICATIONS:

- 1.1 FREQUENCY RANGE: DC to 8.0 GHz.
- 1.2 MAXIMUM INPUT POWER:  
2 WATTS AT +25°C  
1 WATT AT +125°C
- 1.3 MAXIMUM VSWR:  
DC to 4 GHz: 1.05:1  
4 to 8.0 GHz: 1.10:1
- 1.4 IMPEDANCE: 50 OHMS
- 1.5 TEMPERATURE RANGE: -65°C to +125°C

2.0 MARKING:

- 2.1 MARK UNIT AS SHOWN:  
(REF: INK-2639-27-63)



REV.	DESCRIPTION	DATE
-	RELEASED	8/14/95
-1	ADDED TITLEBLOCK	10/31/05

<p>NOTICE: The information contained in this drawing is proprietary and must not be used without the permission of Emerson Network Power.</p> <p>UNLESS OTHERWISE NOTED DIMENSIONS ARE IN INCHES AND TOLERANCES ARE: 3 PLACE DECIMALS ±.005 2 PLACE DECIMALS ±.02 FRACTIONS ±1/64 PARALLELITY: T.I.R. _____ FLATNESS: T.I.R. _____ CONCENTRICITY: T.I.R. _____ ANGLES AND PERPENDICULARITY: ±1°</p>		<p>CAGE CODE <b>34078</b></p>		<p><b>MIDWEST MICROWAVE</b></p>	
<p><b>EMERSON</b> Network Power Connectivity Solutions</p>		<p>TITLE 2 WATT TERMINATION OUTLINE DRAWING</p>			
<p>DRAWN/DATE M.STAFFORD 8/11/95</p>		<p>ENG./DATE C.BONK 8/14/95</p>		<p>DRAWING NUMBER TRM-2092-MC-SMA-02-01</p>	
<p>CHECKED/DATE A.BEATTY 8/14/95</p>		<p>APPROVED/DATE</p>		<p>REV. -1</p>	
<p>SCALE: 5=1</p>		<p>SHEET 1 of 1</p>			