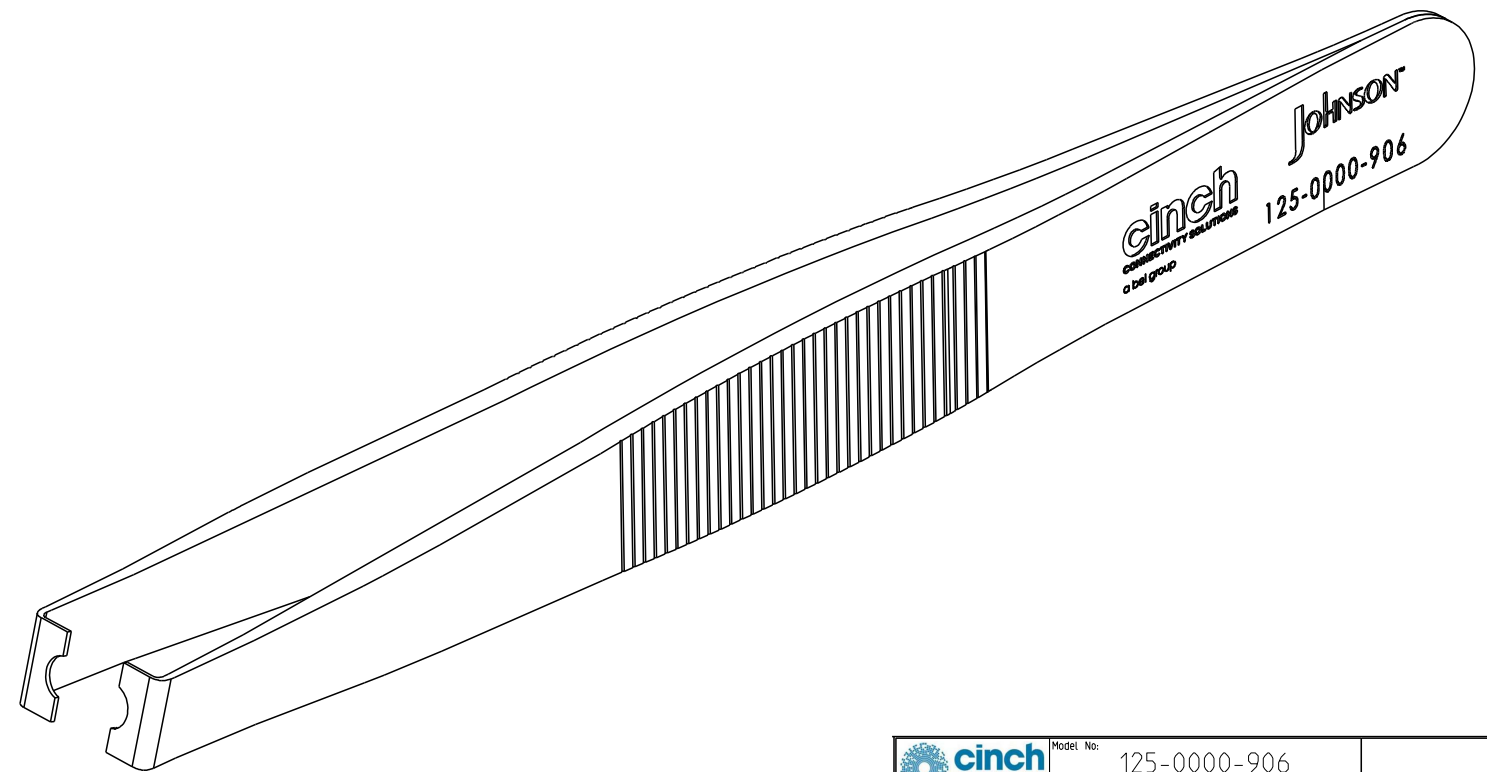
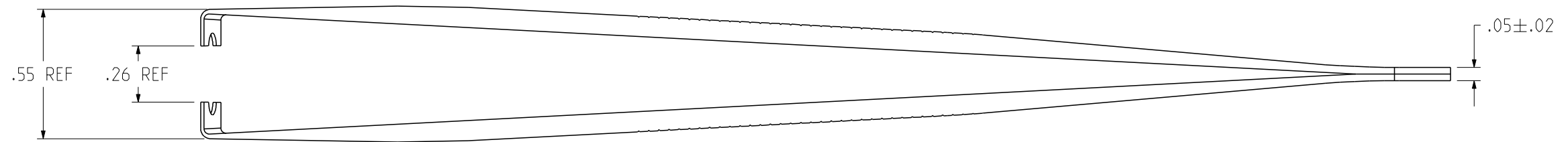
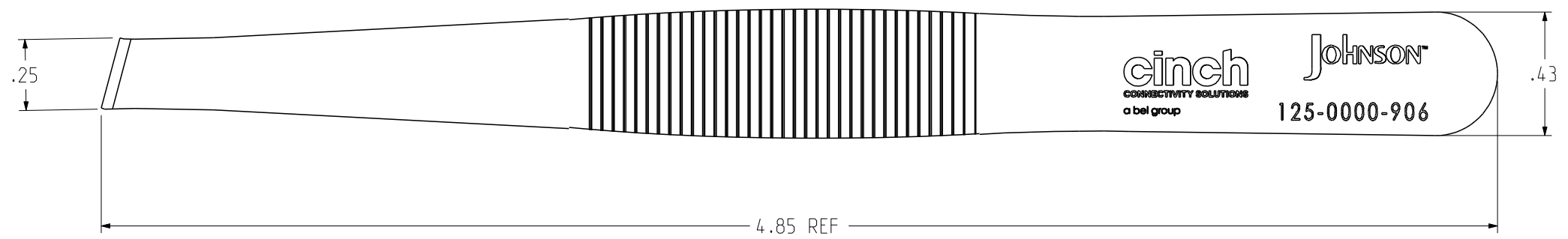
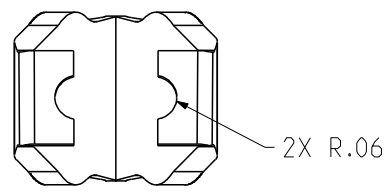


REV	ECO	DATE
1	INITIAL RELEASE	13AUG2020



NOTES:

1. MATERIAL: STAINLESS STEEL , TYPE 304, PER QQ-S-764.
2. FINISH: PASSIVATED.
3. SHARP EDGES: NO SHARP EDGES ALLOWED. 0.005 X 45° Max.
4. PACKAGE: ONE PIECE PER BAG.

<p>This PROPRIETARY Document is property of Cinch Connectivity Solutions. It is confidential in nature, non-transferable, and issued with the clear understanding that it is not traced or copied without permission and is returnable upon demand.</p> <p>INTERPRET DRAWING IN ACCORDANCE WITH ASME Y14.5-2009.</p>	Model No: 125-0000-906	JOHNSON		
	RoHS (EU)/2015/863 COMPLIANT	Cage Code	Title: SMPM REMOVAL TOOL	
	UNLESS OTHERWISE SPECIFIED UNITS: INCH	3RD ANGLE PROJECTION	Drawing No. 125-0000-906	REV. 1
	.XX ± .01 .XXX ± .003 .XXXX ± .0010 ANGLE ± 2°	Drawn by: BILL PENG Date: 08/13/2020	Size B DO NOT SCALE DRAWING	Workmanship Std: NONE Sheet 1 OF 1