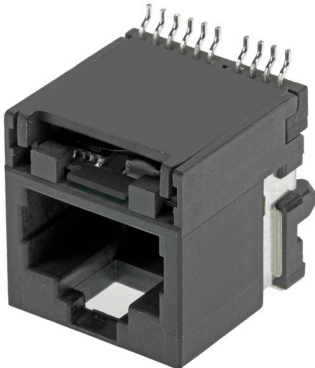
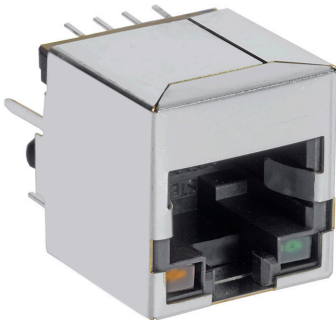


Vertical Mount Series

Single Port RJ45 MagJack® ICMs

Bel Magnetic Solution's single port vertical mount RJ45 MagJack® ICMs offer 10/100BT and 1GBT Ethernet performance in the same mechanical package and footprint as existing passive vertical mount connectors. Suitable applications include single-board motherboards, industrial PCs, printers, daughter cards, industrial controllers and any applications requiring a vertical mount Ethernet connector, where board space is a premium.



Features & Benefits

- Single port configuration for 10/100BT and 1GBT Ethernet
- Same mechanical package and footprint as existing passive vertical mount connectors
- Includes options for two LEDs – yellow, green, red, or bi-colors
- Available circuit options = 10/100BT and 1GBT
- Available with POE compatibility

Applications

- Single-board motherboards
- Industrial controllers
- Industrial PCs
- Daughter cards
- Printers

Part Numbers

Bel Part Number	Speed	LEDs	Power	Operating Temp.
SI-16001-F	10/100BASE-T	No	No	0 to 70°C
SI-46001-F	10/100BASE-T	Yes	No	0 to 70°C
SI-46020-F	10/100BASE-T	Yes	60W	0 to 70°C
V895-1001-AW	10/100BASE-T	No	60W	0 to 70°C
V890-1AX1-A1	1000BASE-T	Yes	No	0 to 70°C
1840061-1	10/100BASE-T	No	No	-40 to 85°C
1840417-4	1000BASE-T	Yes	No	0 to 70°C
1840453-2	1000BASE-T	Yes	No	0 to 70°C
1840472-1	1000BASE-T	Yes	No	-40 to 85°C
1840498-6	10/100BASE-T	Yes	No	-40 to 85°C