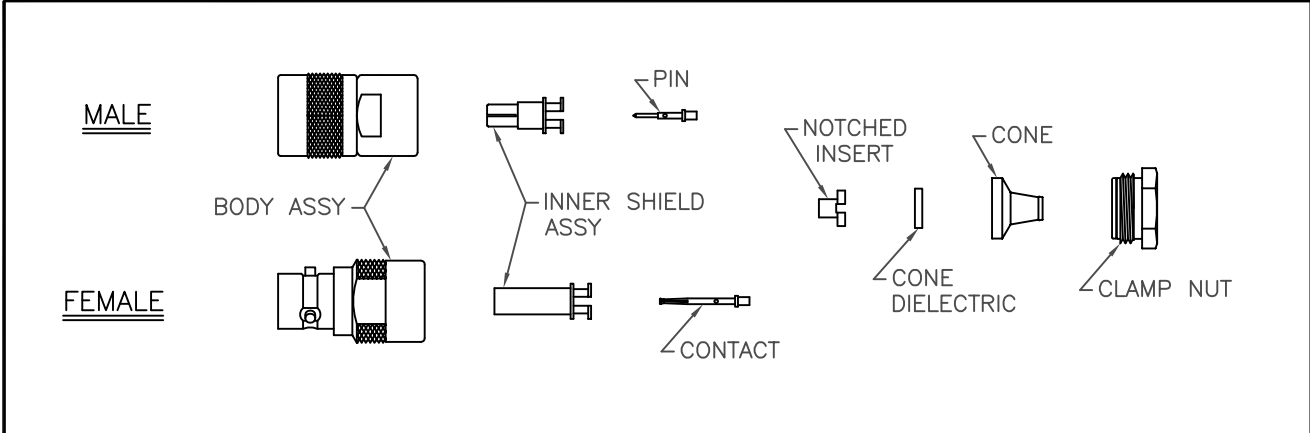


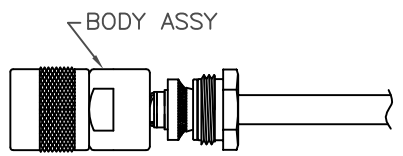
THE INFORMATION CONTAINED HEREON IS THE PROPERTY OF EMERSON NETWORK POWER, RECEIPT, POSSESSION OR TRANSMITTAL OF THIS DRAWING DOES NOT LICENSE OR IMPLY ANY RIGHT TO USE, SELL, PROTOTYPE OR MANUFACTURE FROM THIS INFORMATION. NO REPRODUCTIONS OR PUBLICATION OF THIS INFORMATION, IN WHOLE OR IN PART, SHALL BE MADE WITHOUT WRITTEN AUTHORIZATION FROM EMERSON NETWORK POWER.

DWG NO. TAI-127 SH 1

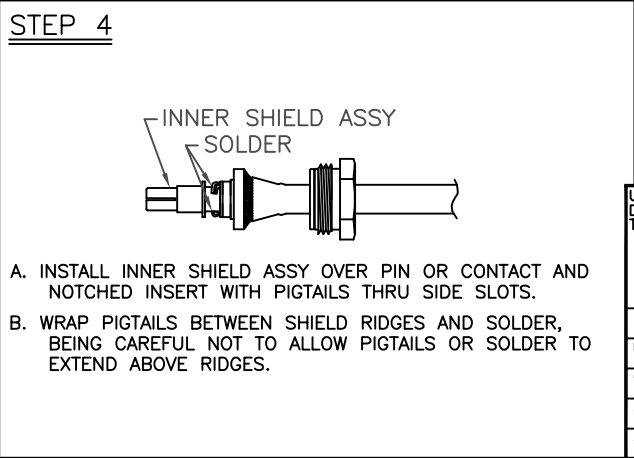
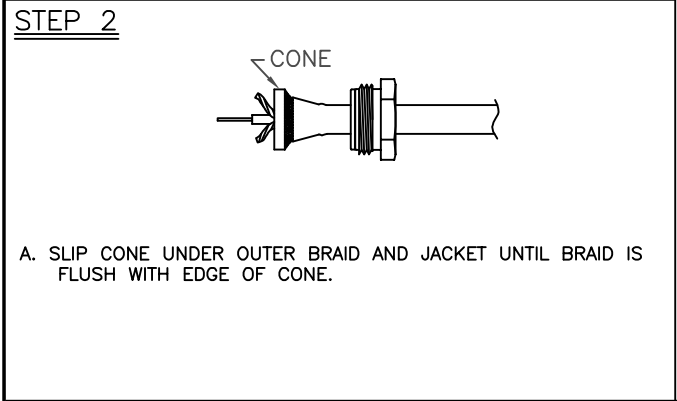
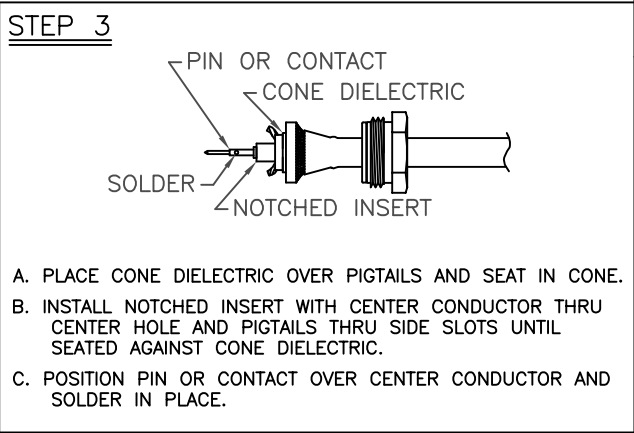
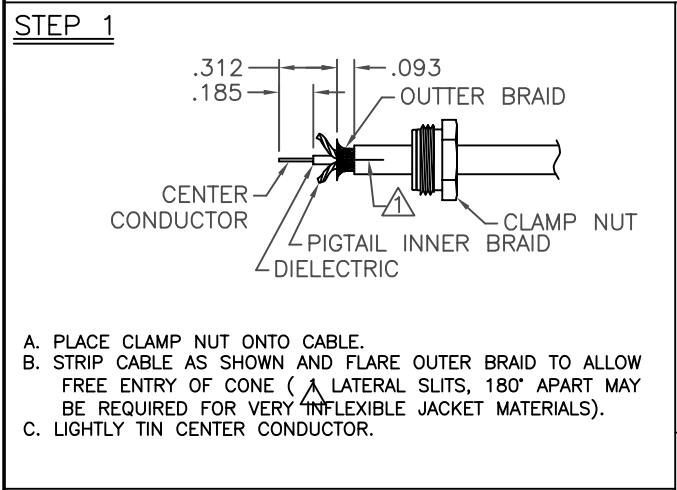
REVISIONS			
REV	DESCRIPTION	DATE	APPROVED
E	ECO 52208	5/19/10	T. KOHLER



STEP 5



- A. BRING CLAMP NUT UP TO TAPERED PORTION OF CABLE.
- B. ASSEMBLE BODY ASSY. OVER ENTIRE ASSY. AND ENGAGE WITH CLAMP NUT.
- C. WRENCH TIGHTEN TO 25-30 IN LB TORQUE.



ASSEMBLY INSTRUCTIONS
"WRENCH CRIMP" 150/3150 SERIES
TO .250" DIA TRIAX CABLE



a bel group
Cinch Connectivity Solutions
299 Johnson Avenue SW, Suite 100
Waseca, MN 56093 USA
T: +1 507.833.8822 F: +1 507.833.6287
cinch.com

MGF. CODE NO. 14949

TAI-127

REV E

MADE IN USA

UNLESS OTHERWISE SPECIFIED
DIMENSIONS ARE IN INCHES
TOLERANCES ARE:
FRACTIONS DECIMALS ANGLES
± .XX ± ±
.XXX ± ±
.XXXX ± ±



"WRENCH CRIMP" 150/3150
SERIES TO .250 DIA TRIAX CABLE

SIGNATURES	DATE
DRAWN BY C. WALLACE	5/19/10
CHECKED BY	
APPROVED BY	
APPROVED BY	

SIZE	CAGE CODE	DWG NO.	REV
B	14949	TAI-127	E
SCALE	N/A		SHEET 1 OF 2