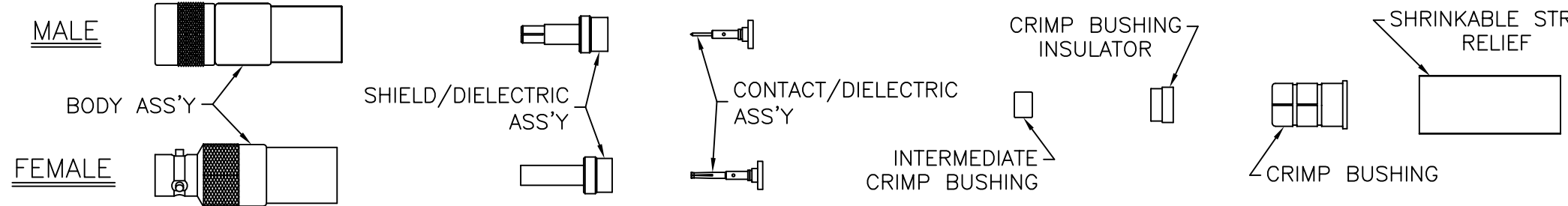
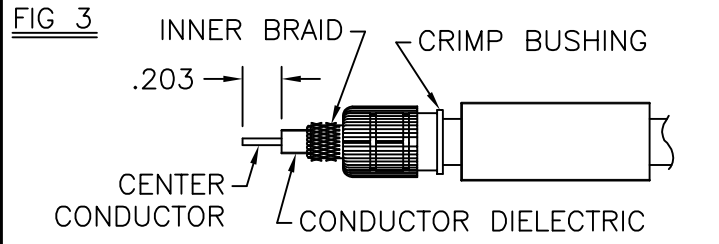
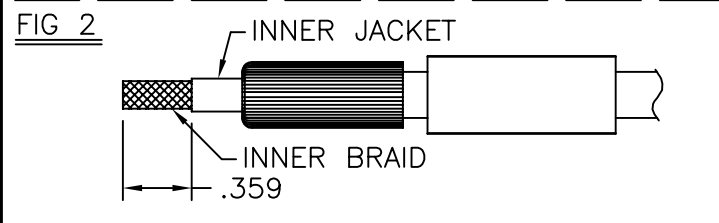
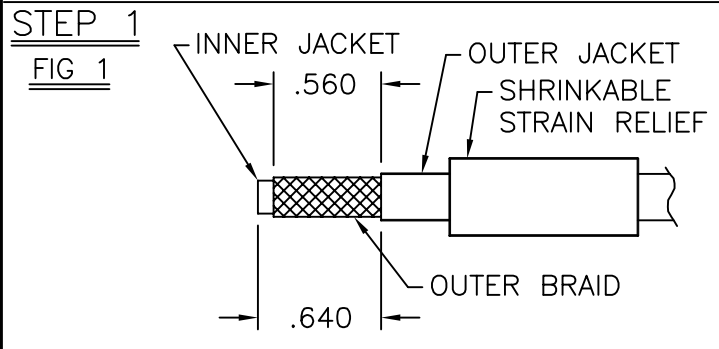


THE INFORMATION CONTAINED HEREON IS THE PROPERTY OF EMERSON NETWORK POWER, RECEIPT, POSSESSION OR TRANSMITTAL OF THIS DRAWING DOES NOT LICENSE OR IMPLY ANY RIGHT TO USE, SELL, PROTOTYPE OR MANUFACTURE FROM THIS INFORMATION. NO REPRODUCTIONS OR PUBLICATION OF THIS INFORMATION, IN WHOLE OR IN PART, SHALL BE MADE WITHOUT WRITTEN AUTHORIZATION FROM EMERSON NETWORK POWER.

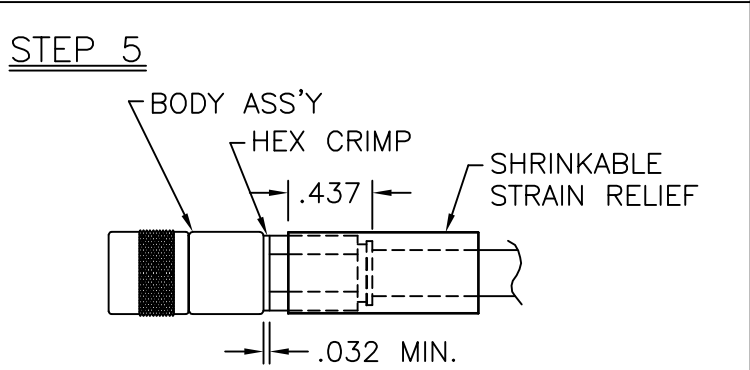
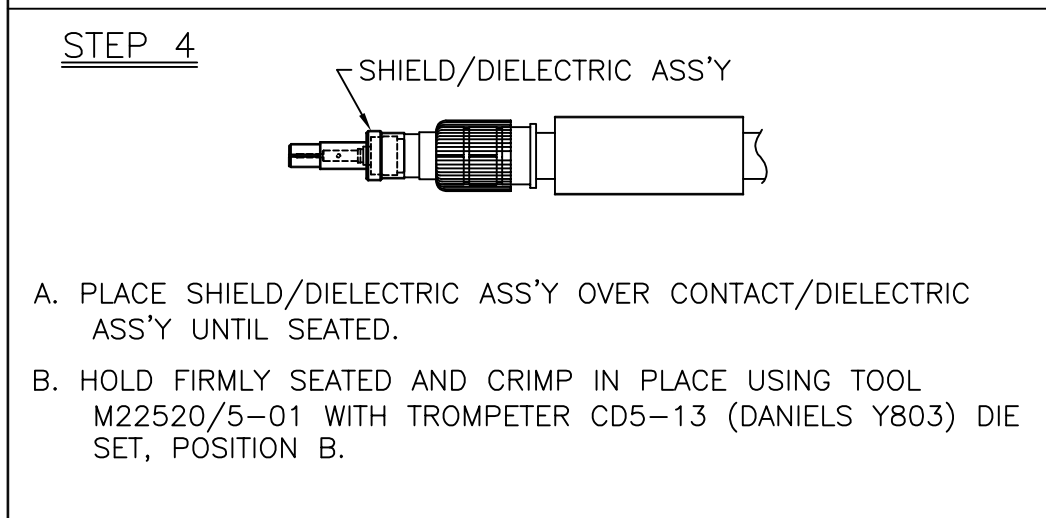
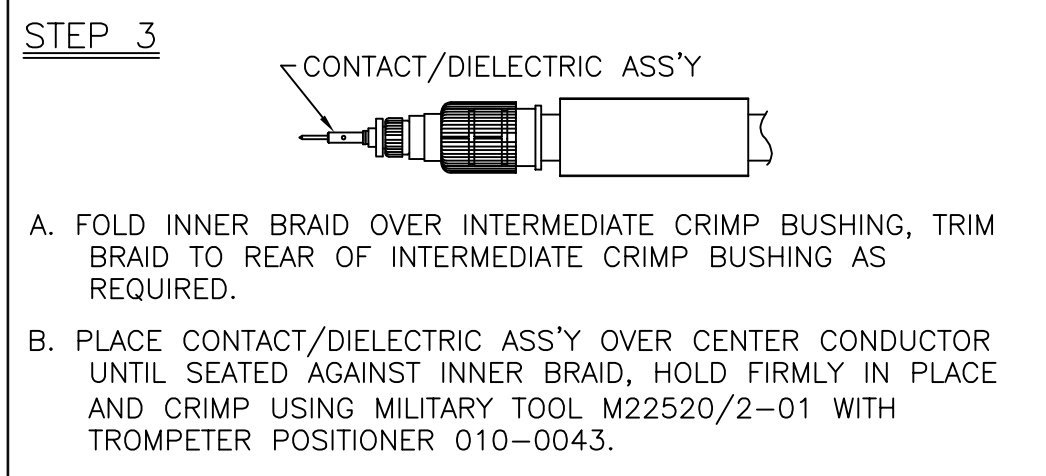
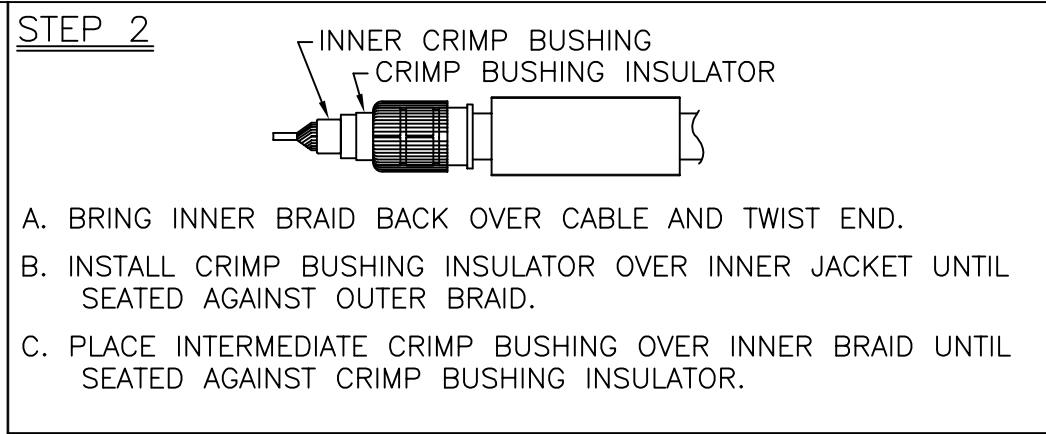
DWG NO. TAI-173 SH 1



REVISIONS			
REV	DESCRIPTION	DATE	APPROVED
E	ECO 52208	8/13/10	T. KOHLER



- REMOVE OUTER JACKET AND OUTER BRAID TO DIM. SHOWN IN FIG. 1.
- PLACE SHRINKABLE STRAIN RELIEF ONTO CABLE.
- COMB OUTER BRAID OVER OUTER JACKET AND TRIM INNER JACKET TO DIM. SHOWN IN FIG. 2.
- BRING OUTER BRAID OVER CABLE AND TWIST END, INSTALL CRIMP BUSHING OVER OUTER JACKET UNTIL BOTTOMED INSIDE OF CRIMP BUSHING, FOLD OUTER BRAID OVER CRIMP BUSHING FIG. 3.
- COMB OUT INNER BRAID, FOLD BACK AND REMOVE CONDUCTOR DIELECTRIC TO DIM. SHOWN FIG. 3.
- LIGHTLY TIN CENTER CONDUCTOR.



**ASSEMBLY INSTRUCTIONS**  
"150AC" LG BODY SERIES TO .172 TO .250 DIA TRIAX CABLE

**cinch**  
CONNECTIVITY SOLUTIONS  
a bel group  
Cinch Connectivity Solutions  
299 Johnson Avenue SW, Suite 100  
Waseca, MN 56093 USA  
T: +1 507.833.8822 F: +1 507.833.6287  
[cinch.com](http://cinch.com)

MGF. CODE NO. 14949  
TAI-173 REV E  
MADE IN USA

UNLESS OTHERWISE SPECIFIED DIMENSIONS ARE IN INCHES TOLERANCES ARE:

FRACTIONS	DECIMALS	ANGLES
±	.XX ±	±
	.XXX ±	
	.XXXX ±	

SIGNATURES	DATE
DRAWN BY C. WALLACE	8/13/10
CHECKED BY	
APPROVED BY	
APPROVED BY	

**cinch**  
CONNECTIVITY SOLUTIONS  
a bel group

150AC LG BODY SERIES TO .172 TO .250 DIA TRIAX CABLE

SIZE <b>B</b>	CAGE CODE <b>14949</b>	DWG NO. TAI-173	REV E
SCALE 1:1	DATE 1/23/89	SHEET 1 OF 2	