

# LFWLT300-CK COVER KIT



## Features

- Noncorrosive
- Easy assembly
- Low weight
- Fully safe

## FOR WLT300, MWLT300 SERIES

### Derating Guidelines

WLT300/MWLT300: De-rate to 70% of values mentioned in temperature de-rating curves of open frame models at all load and ambient conditions.

### Contents

Mounting Base, Cover, Insulator, Fixing Screws

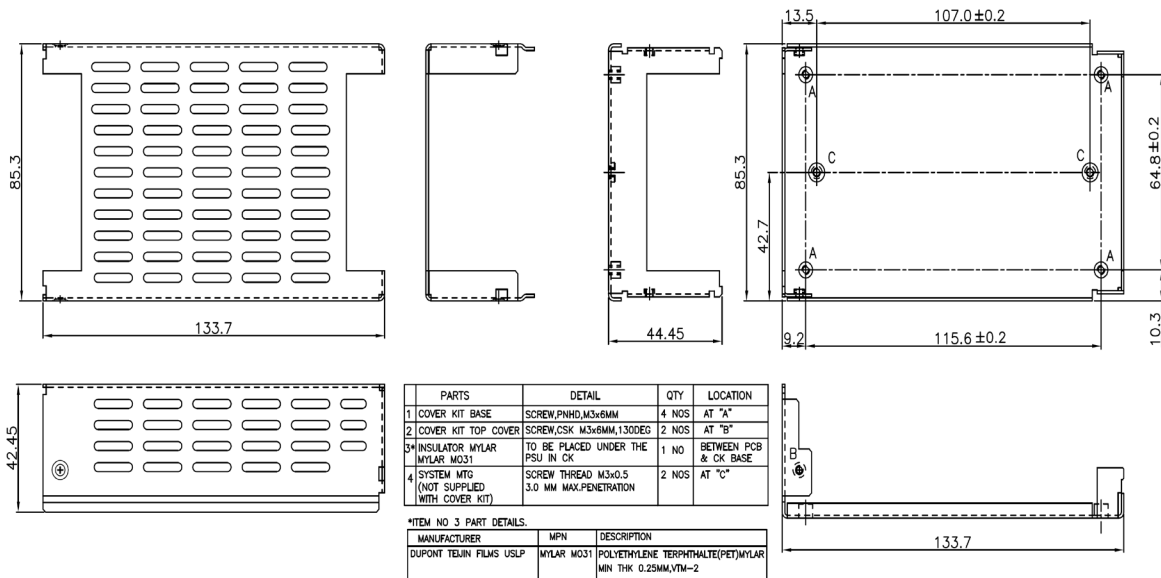
### Mechanical Dimensions

Cover and Base Material EG(Zintec)/CRCA/GI 1.0mm thick (Powder coating/ Passivation/ ED coating black)

Marked A: PCB MTG; B: COVER MTG; C: SYSTEM MTG, M3 Thread

All dimensions are in mm. General tolerance : +/-1.0

## Mechanical Drawing



WLT200 & WLT300.  
MECHANICAL OUTLINE DIMENSIONS.