

LF(M)WLT60-CK COVER KIT



Features

- Noncorrosive
- Easy assembly
- Low weight
- Fully safe

FOR (M)WLT40 & (M)WLT60 SERIES

Derating Guidelines

WLT40/MWLT40: De-rate to 70% of values mentioned in temperature de-rating curves of open frame models at all load and ambient conditions.

WLT60/MWLT60: De-rate to 70% of values mentioned in temperature de-rating curves of open frame models at all load and ambient conditions.

Contents

Mounting Base, Cover, Insulator, Fixing Screws

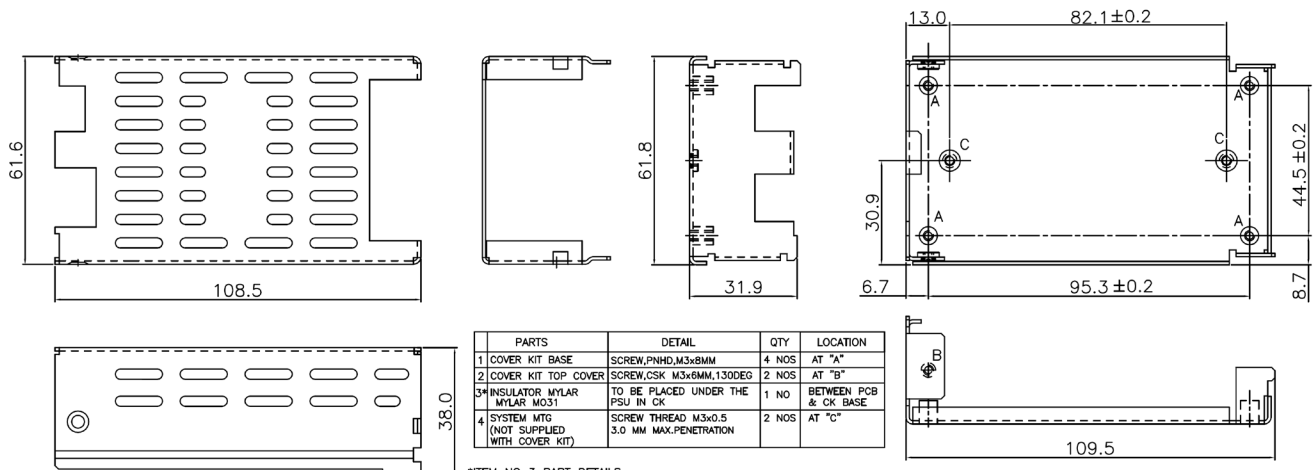
Mechanical Dimensions

Cover and Base Material EG(Zintec)/CRCA/GI 1.0mm thick (Powder coating/ Passivation/ ED coating black)

Marked A: PCB MTG; B: COVER MTG; C: SYSTEM MTG, M3 Thread

All dimensions are in mm. General tolerance : +/-1.0

Mechanical Drawing



*ITEM NO 3 PART DETAILS.

MANUFACTURER	MPN	DESCRIPTION
DUPONT TEIJIN FILMS USLP	MYLAR MO31	POLYETHYLENE TERPHTHALTE(PET)MYLAR MIN THK 0.25MM,VTM-2

WLT60-CK.

MECHANICAL OUTLINE DIMENSIONS.