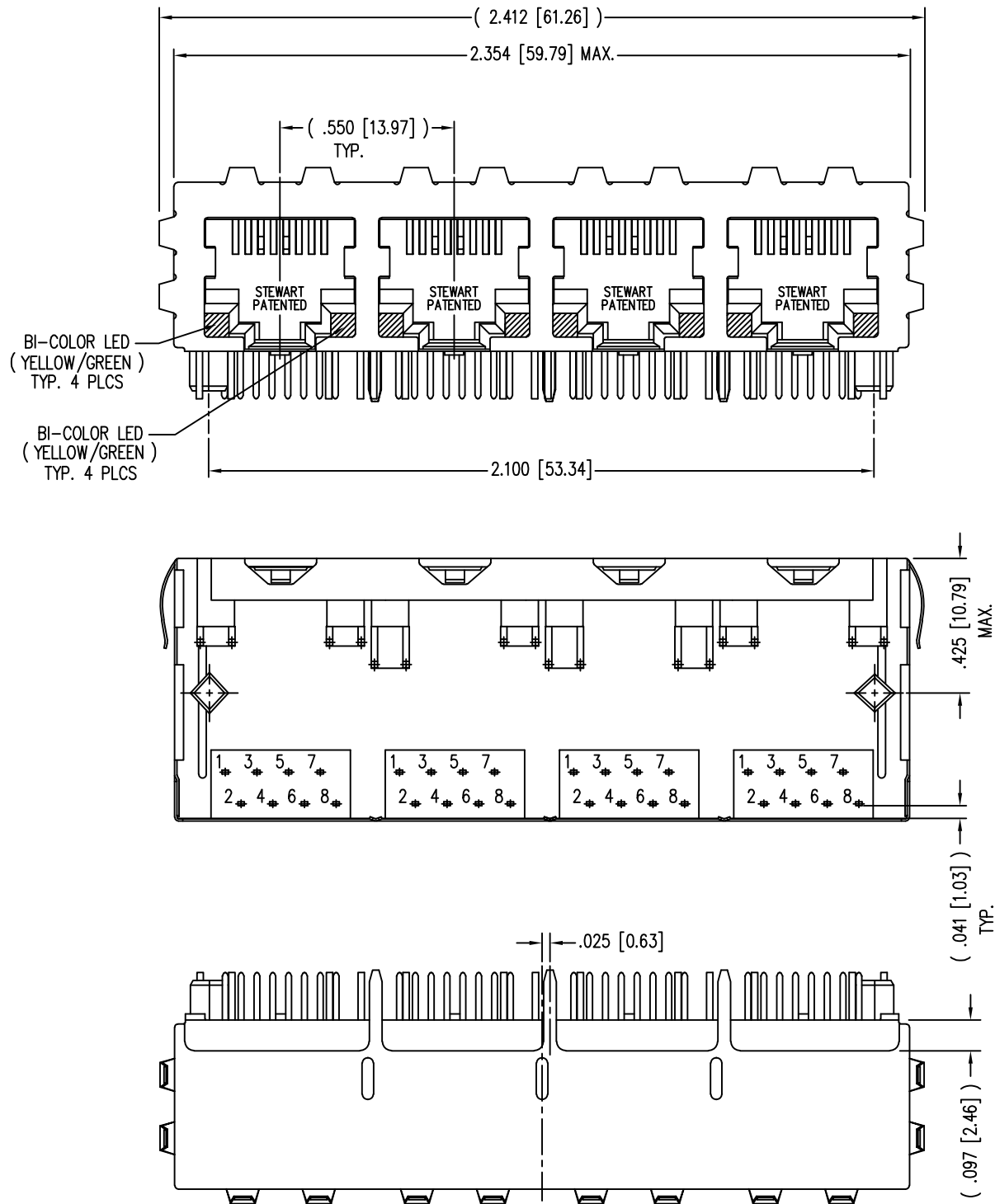
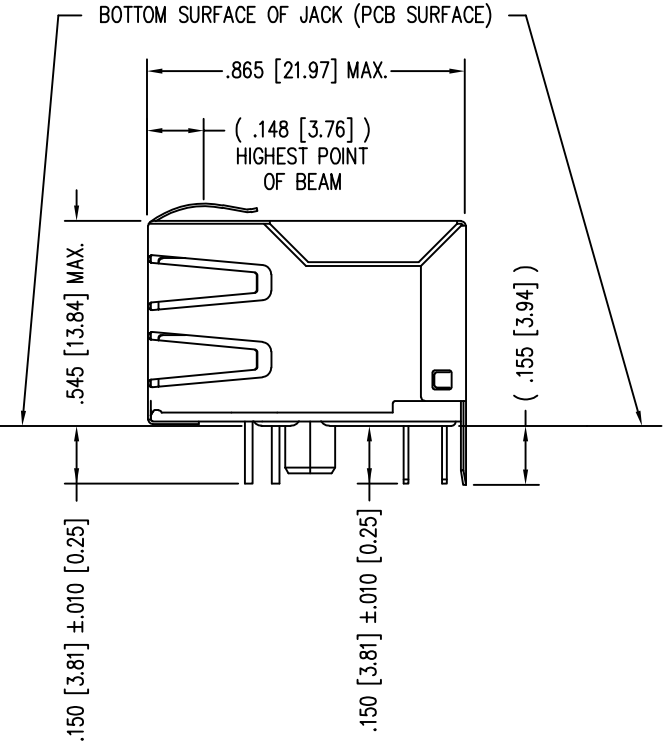


DATE	REV	ECN	APP'D. BY
1-19-15	A2	10218	TRM
3-16-16	A3	10618	TRM
4-10-19	B0	11365	ADB

B



A



- NOTES:
- CONNECTOR MATERIALS:
HOUSING: HI-TEMP, UL94 V-0
CONTACTS/SHIELD: COPPER ALLOY
SHIELD PLATING: NICKEL
CONTACT PLATING: SELECTIVE GOLD OR EQUIVALENT IN THE CONTACT AREA
SEE CHART FOR PART NUMBER
 - FOR PRODUCT SPECIFICATIONS SEE PR022-01.
 - RATED AT MAX. 260°C FOR MAX. 10 SECS.
 - DIMENSIONS AND TOLERANCES COMPLY WITH TIA-1096 STANDARD.
 - THE SUGGESTED PANEL OPENING IS INTENDED TO GIVE USER THE ABILITY TO HAVE REASONABLE JACK/PANEL CLEARANCES, YET MAINTAIN GROUNDING CAPABILITY. THESE VARIABLES CAN BE ADJUSTED IN EITHER DIRECTION BUT MAY CARRY SOME CONSEQUENCES IN THE FORM OF LOWER MATING FORCES OR TIGHTER ASSEMBLY TOLERANCES.
 - DESIGNED FOR CATEGORY 5/5e APPLICATIONS.

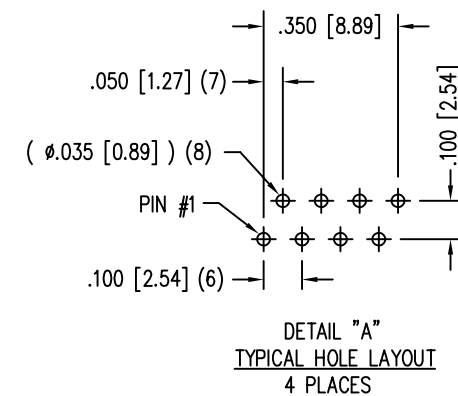
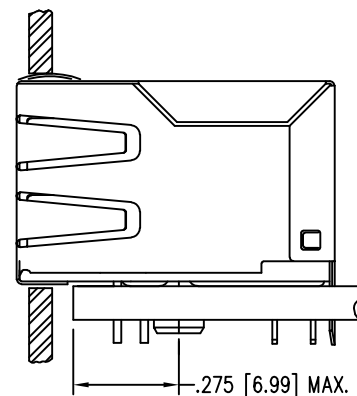
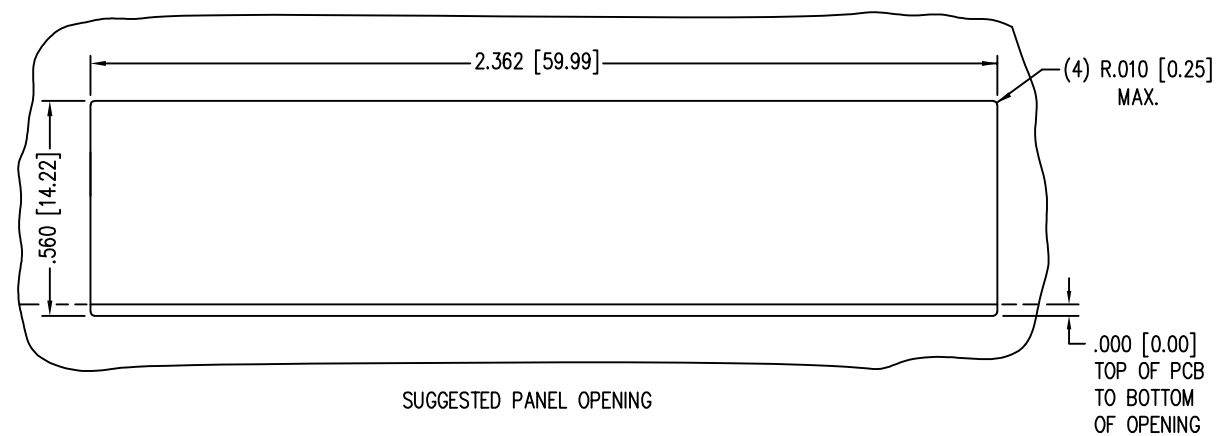
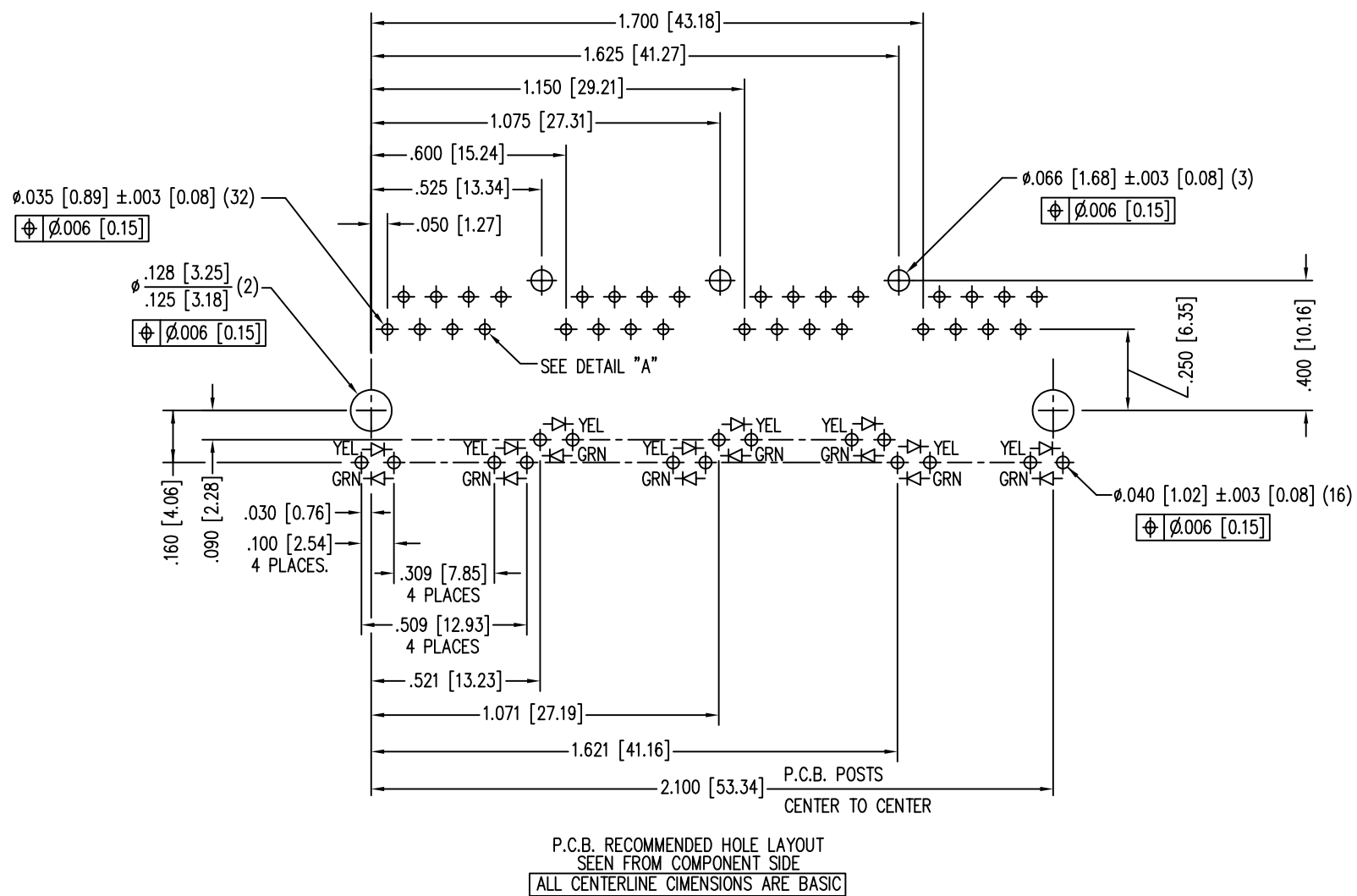
50 MICRO-INCHES [1.27um]	SS74800-106F
CONTACT PLATING IN MATING AREA	PART NUMBER

B

A

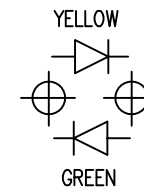


THIRD ANGLE PROJECTION 	 11118 Susquehanna Trail South Glen Rock, PA 17327-9199 (717) 235-7512 http://www.stewartconnector.com
DO NOT SCALE DRAWING DRAWING IS SUBJECT TO CHANGE WITHOUT NOTICE	TITLE: 4 PORT HARMONICA JACK, EMI-RFI ENHANCED SHIELD, ESD GROUNDED WITH PANEL GROUNDS, .150" CONTACT PIN & LED LENGTHS, BI-COLOR Y/G LED'S
DIMENSIONS: INCHES [METRIC]	THIS DRAWING AND THE SUBJECT MATTER SHOWN THEREON ARE CONFIDENTIAL AND THE PROPRIETARY PROPERTY OF STEWART CONNECTOR AND SHALL NOT BE REPRODUCED, COPIED, OR USED IN ANY MANNER WITHOUT PRIOR WRITTEN CONSENT OF STEWART CONNECTOR. ONE OR MORE U.S. PATENTS MAY APPLY TO THIS PRODUCT. FOR DETAILS, PLEASE VISIT: HTTP://BELFUSE.COM/STEWART/STEWART_PATENTS/
UNLESS OTHERWISE SPECIFIED TOLERANCES ARE ±.005 [0.13] ANGLES ARE ± 1°	DRN BY: AWS DATE 5-10-11
SHEET NO. 1 OF 2	APPD BY: TRM DATE 5-10-11
	DWG NO. CT740199F REV. B0



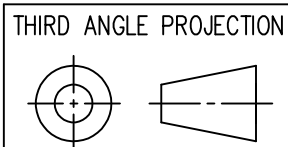
LED POLARITY

(ENLARGED VIEW)



LED SPECIFICATIONS				
LOW CURRENT BI-COLOR LED		WAVE LENGTH	FORWARD V (MAX)	*(TYP)
YELLOW/GREEN	YELLOW	590 nm	2.5 V	2.1 V
	GREEN	565 nm	2.5 V	2.2 V

* WITH A FORWARD CURRENT OF 20mA (TYP)



11118 Susquehanna Trail South
Glen Rock, PA 17327-9199
(717) 235-7512

<http://www.stewartconnector.com>

DO NOT SCALE DRAWING
DRAWING IS SUBJECT TO CHANGE WITHOUT NOTICE

DIMENSIONS: INCHES [METRIC]
UNLESS OTHERWISE SPECIFIED TOLERANCES ARE ± 0.005 [0.13] ANGLES ARE $\pm 1^\circ$

SHEET NO. 2 OF 2

TITLE:	4 PORT HARMONICA JACK, EMI-RFI ENHANCED SHIELD, ESD GROUNDED WITH PANEL GROUNDS, .150" CONTACT PIN & LED LENGTHS, BI-COLOR Y/G LED'S
--------	---

DRN BY:	AWS	DATE	5-10-11
---------	-----	------	---------

APPD BY: TRM	DATE 5-10-11
--------------	--------------

DWG NO.	CT740199F	REV.	B0
---------	-----------	------	----