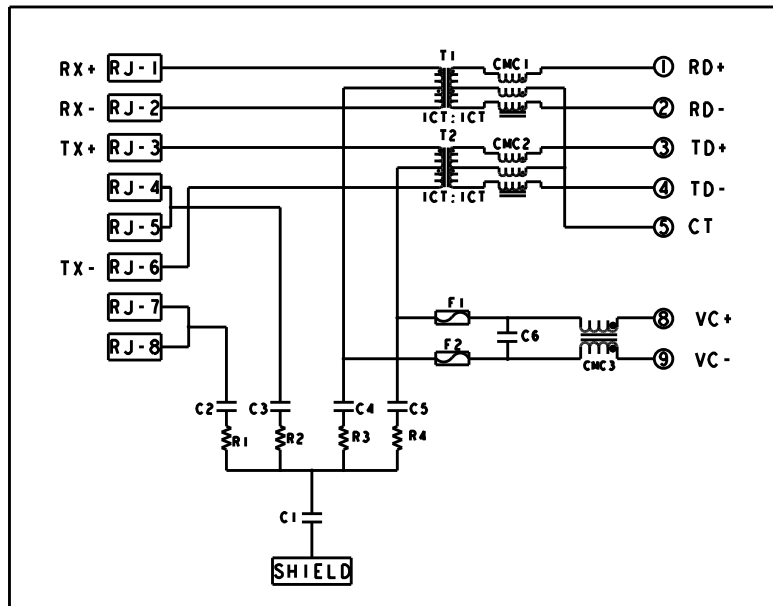


S8V28 10/100 PoE CIRCUIT

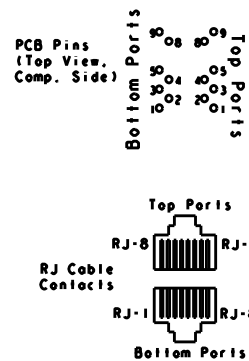
Top and Bottom Ports



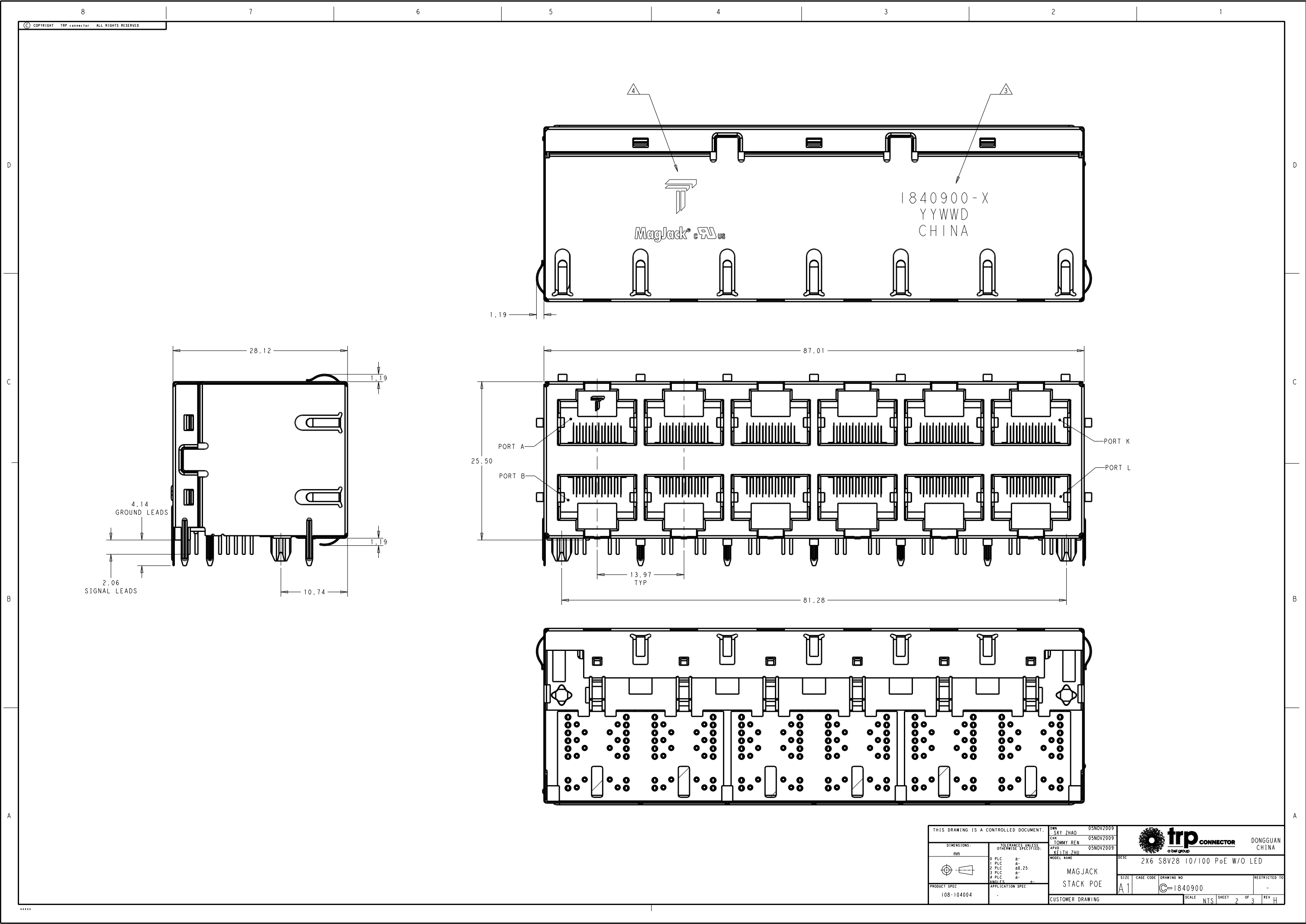
C1 = 1000pF, 2KV, ±10%, X7R DECOUPLING CAP
C2 - C5 = 22nF, 100V, ±10% CAPACITORS
R1-R4 = 75 Ohms, 1/16 W, ±5% RESISTORS
C6 = 0.1uF, 100V
F1-F2=125V, 1A


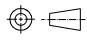
Pin Designations

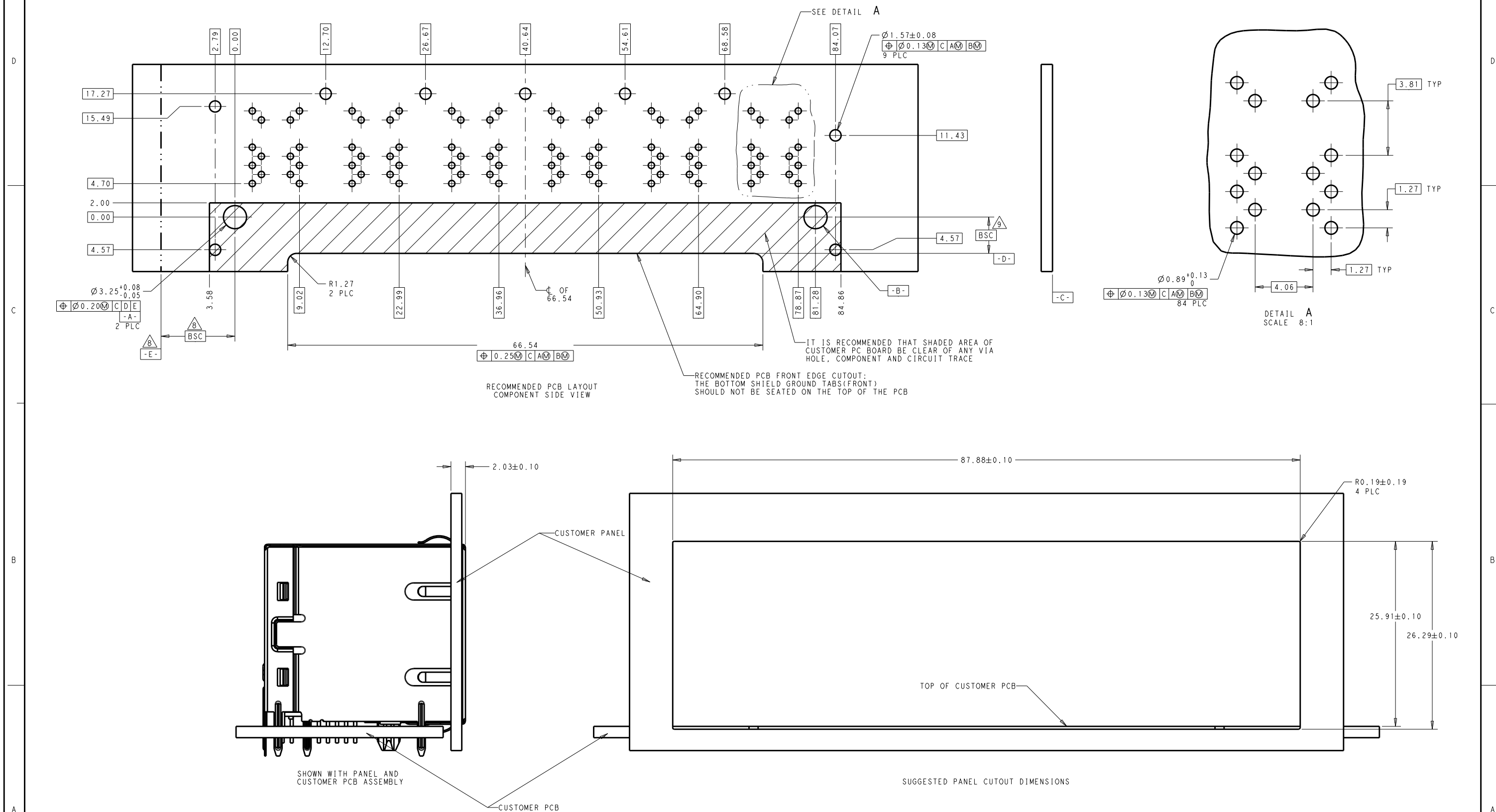
(Repeat for each vertical pair of ports.)


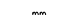


- MATERIALS:**
PLASTIC HOUSING: BLACK, THERMOPLASTIC FLAMMABILITY RATING UL 94V-0
SHIELD: BRASS, PREPLATED WITH 0.76um MIN SEMI-BRIGHT NICKEL,
POST DIPPED WITH 2.54um MIN SAC SOLDER ON SOLDER TAILS.
CONTACTS: PHOSPHOR BRONZE, 1.27um MIN OVERALL NICKEL
UNDERPLATE WITH SELECT 1.27um MIN GOLD AT MATING INTERFACE
AND 2.54um MIN MATTE TIN ON SOLDER TAILS.
ALL PC BOARDS: HIGH TEMPERATURE PCB, TG>170°C
- MAGNETICS**
APPLICATION: 10/100 BASE-T, PoE
IMPEDANCE: 100 OHMS
TURNS RATIO (CHIP:CABLE): TX = 1:1, RX = 1:1
OPEN CIRCUIT INDUCTANCE (OCL): 350uH MIN @100kHz, 0.1VRMS,
8mADC BIAS FROM 0°C TO 70°C, TX AND RX
POE CURRENT: 350mADC MAX
PERFORMANCE @ 25°C:
INSERTION LOSS (IL): 1.1dB MAX FROM 0.5MHz TO 100MHz
RETURN LOSS (RL): 18dB MIN FROM 0.5MHz TO 30MHz
18-20LOG(f/30)dB MIN FROM 30.1MHz TO 60MHz
12dB MIN FROM 60.1MHz TO 80MHz
CROSSTALK ATTENUATION: 35dB MIN FROM 0.5MHz TO 40MHz
33-20LOG(f/50)dB MIN FROM 40.1MHz TO 100MHz
COMMON MODE REJECTION RATIO (CMRR): 30dB MIN FROM 0.5MHz TO 100MHz
ISOLATION VOLTAGE: 2250VDC(MAX) FOR 60 SECONDS WITH A RISE TIME OF
500V/SEC AND WITH ALL PORTS CONNECTED.
- PART NUMBER, DATE CODE AND COUNTRY OF ORIGIN ARE**
LOCATED IN APPROXIMATE AREA SHOWN. DATE CODE: YYWW "YY" IS YEAR, "WW"
IS WORK WEEK, "D" IS DAY OF WEEK, WITH SUNDAY=1
- TRP LOGO AND AGENCY APPROVAL LOGO ARE**
LOCATED IN APPROXIMATE AREA SHOWN.
- OPERATING TEMP: FROM 0°C TO +70°C.**
- RJ45 CAVITY CONFORMS TO FCC RULES AND REGULATION PART 68 SUBPART F.**
- INDICATED MAGNETIC CONNECTIONS ARE SYMMETRICAL AND**
SUPPORT AUTO-MDI/MDIX.
- DATUM AND BASIC DIMENSION ESTABLISHED BY CUSTOMER.**
- BASIC DIMENSION ESTABLISHED BY CUSTOMER, BUT MAY NOT BE**
GREATER THAN 5.08mm.
- THE PARTS ARE RECOMMENDED FOR WAVE SOLDERING PROCESS.**
PEAK TEMPERATURE 260°C MAX, 10 SECONDS MAX.



THIS DRAWING IS A CONTROLLED DOCUMENT.				OWN SKY ZHAO 05NOV2009		 trp CONNECTOR a bel group		DONGGUAN CHINA	
DIMENSIONS:		TOLERANCES UNLESS OTHERWISE SPECIFIED:		CHK TOMMY REN 05NOV2009					
mm				APVD KEITH ZHU 05NOV2009					
		0 PLC ±		MODEL NAME		DESC		2X6 S8V28 10/100 PoE W/O LED	
		1 PLC ±		MAGJACK STACK POE		SIZE			
PRODUCT SPEC		2 PLC ±				CAGE CODE		DRAWING NO	
108-104004		3 PLC ±				A1		C=1840900	
		4 PLC ±		CUSTOMER DRAWING		SCALE		SHEET 2 of 3	
		ANGLES				NTS		REV H	
		APPLICATION SPEC							



THIS DRAWING IS A CONTROLLED DOCUMENT.		DWN SKT ZHAO 05NOV2009 CHK TOMMY REN 05NOV2009 APVD KEVIN ZHU 05NOV2009		 DONGGUAN CHINA	
DIMENSIONS: mm		TOLERANCES UNLESS OTHERWISE SPECIFIED		DISC 2X6 S8V28 10/100 PoE W/O LED	
		0 PLC ± 2 PLC ±0.25 3 PLC ± 4 ANGLES ±		MODEL NAME MAGJACK STACK POE	
PRODUCT SPEC 108-104004		APPLICATION SPEC -		SIZE A1	
				CASE CODE C=1840900	
				DRAWING NO SCALE NTS SHEET 3 OF 3	
				RESTRICTED TO -	