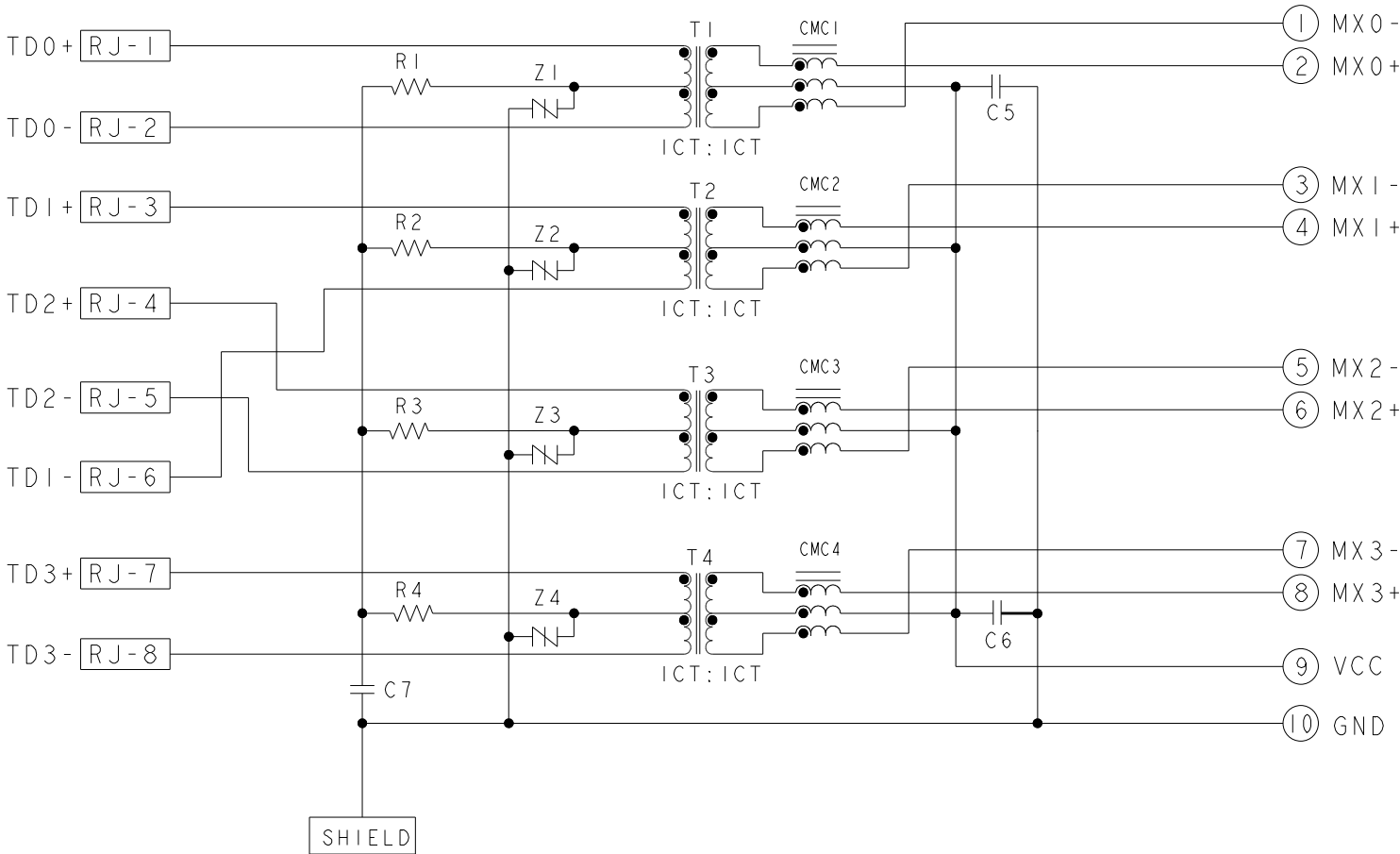


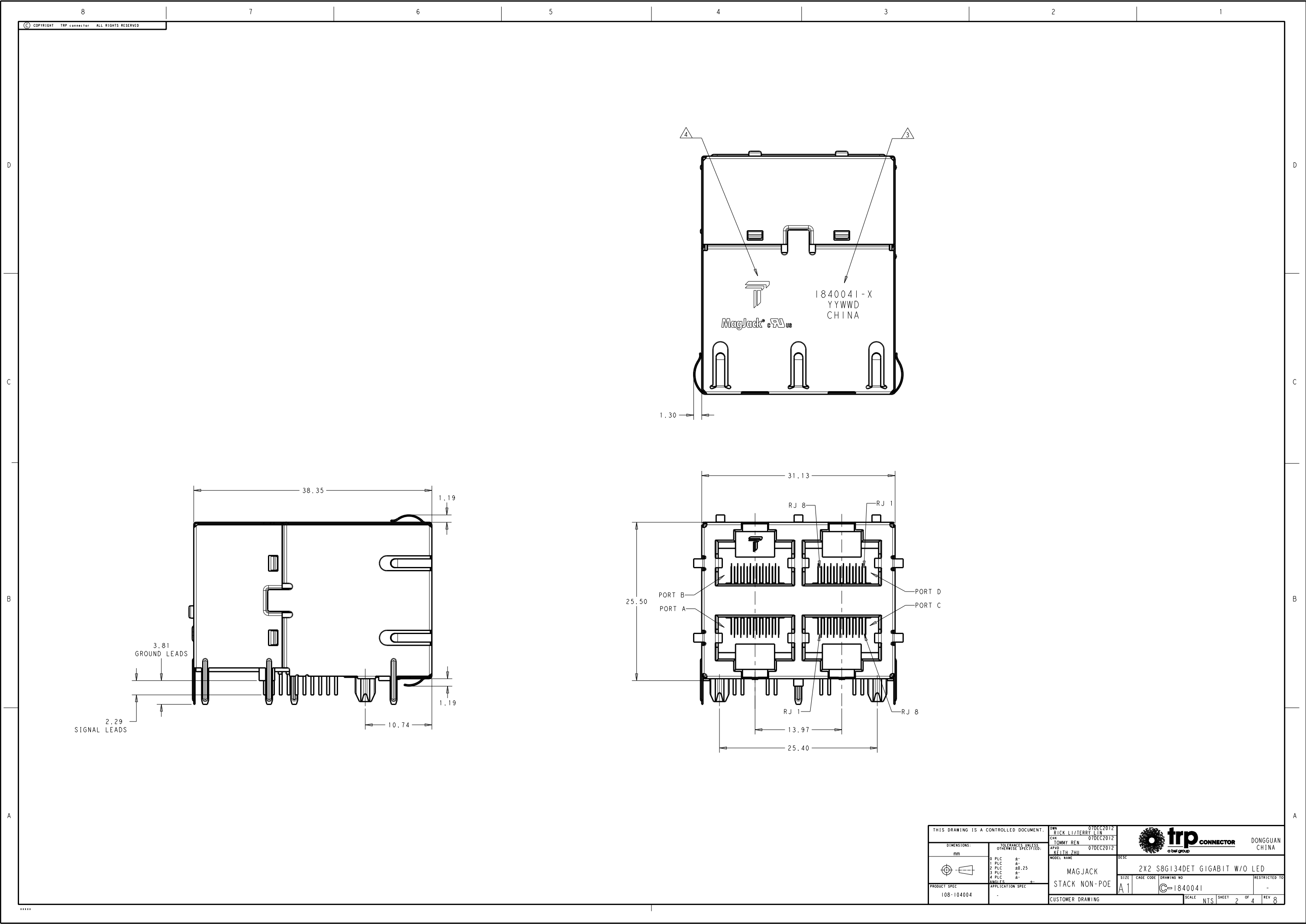
S8G134DET GIGABIT CIRCUIT


TOP AND BOTTOM PORTS

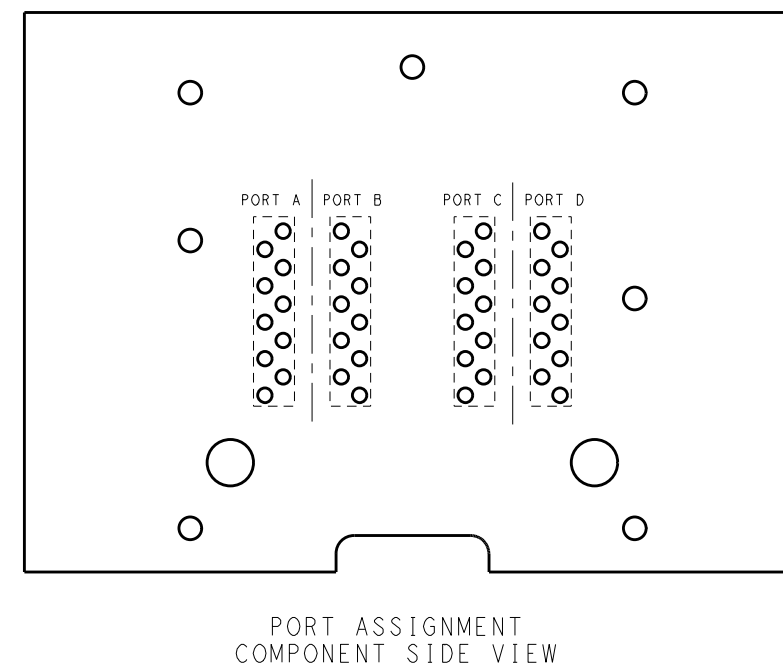
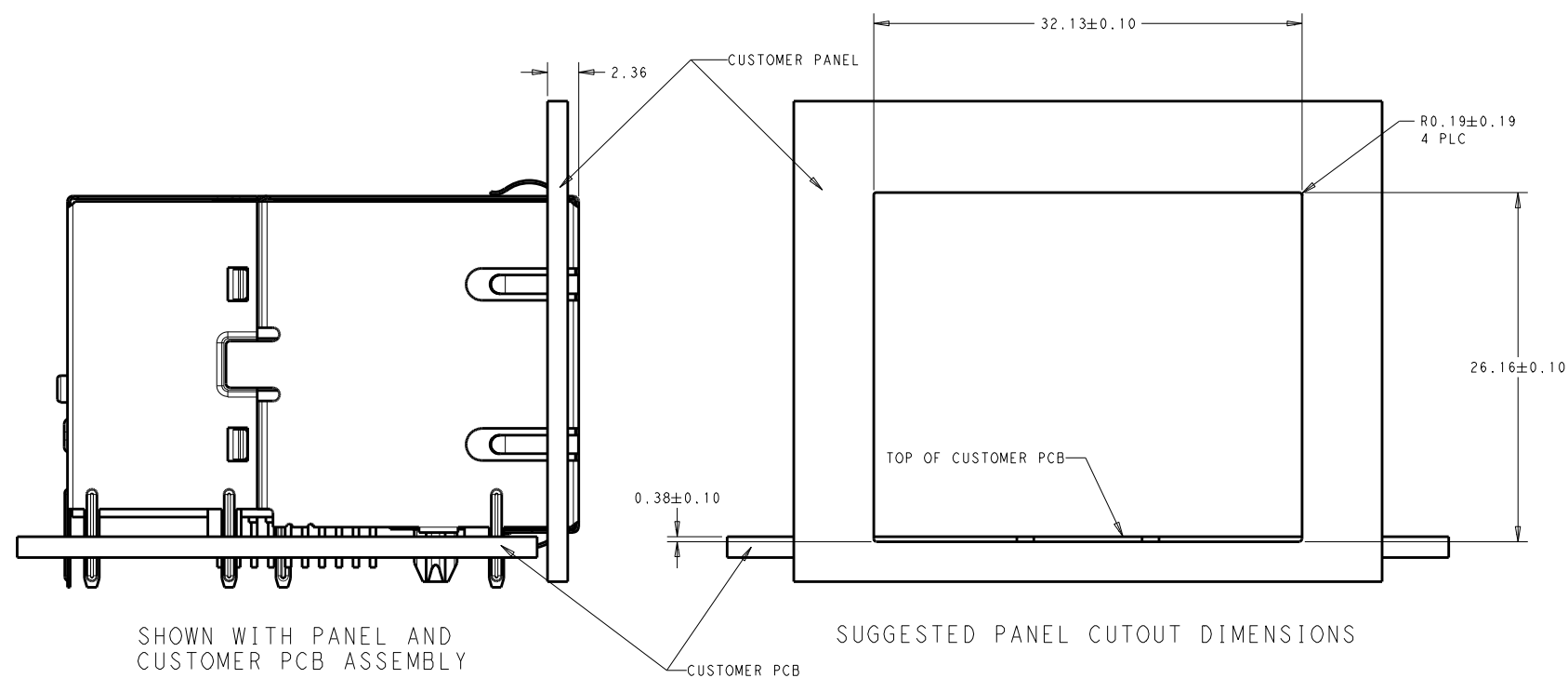
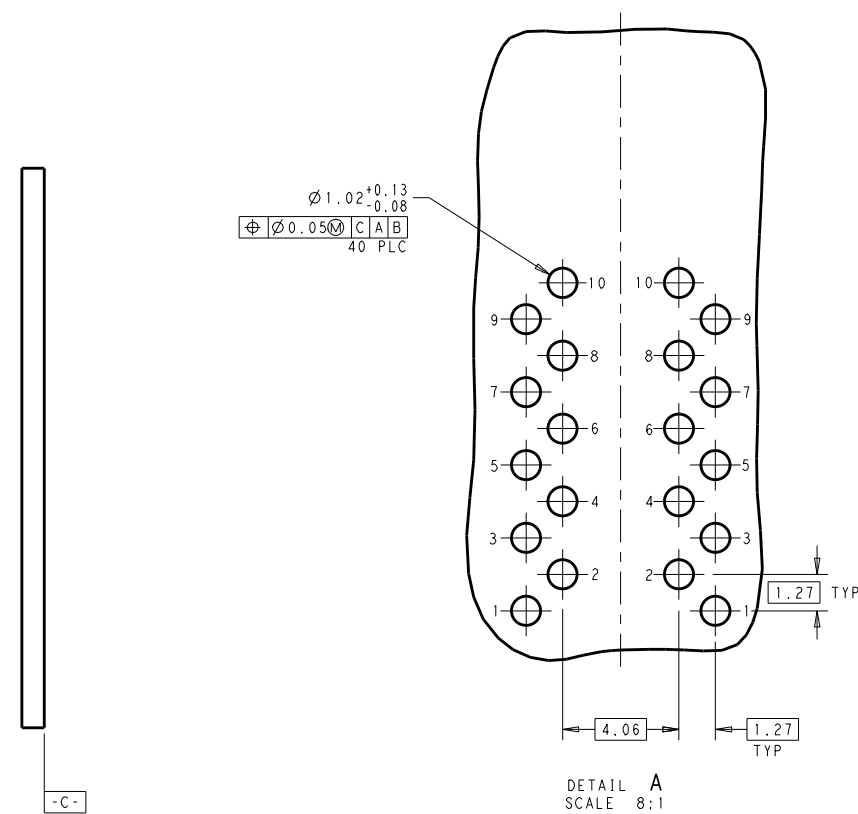
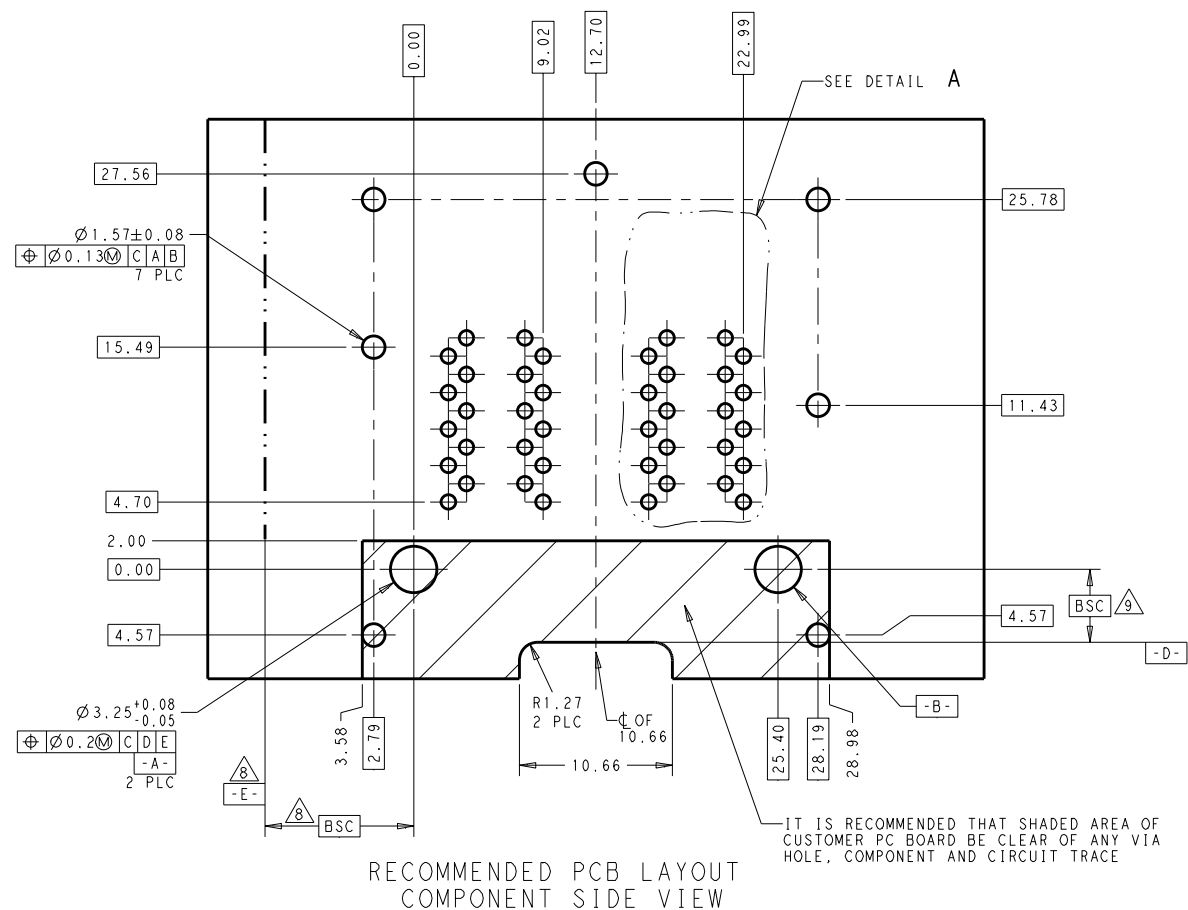


R1-R4 = 75 Ohms, 1/16 W, RESISTORS
C5-C6 = 10nF, 50V, CAPACITORS
C7 = 1000pF, 2kV, DECOUPLING CAPACITOR
Z1-Z4 = 65Vdrn, 88V Vs SIDACTOR

1. MATERIALS:
PLASTIC HOUSING: BLACK, THERMOPLASTIC FLAMMABILITY RATING UL 94V-0
SHIELD: BRASS, PREPLATED WITH 0.76um MIN SEMI-BRIGHT NICKEL,
POST DIPPED WITH 2.54um MIN SAC SOLDER OR PURE TIN SOLDER DIP
ON SOLDER TAILS,
CONTACTS: PHOSPHOR BRONZE, 1.27um MIN OVERALL NICKEL
UNDERPLATE WITH SELECT 1.27um MIN GOLD OR WITH SELECT 0.05um MIN
GOLD OVER 0.76um MIN PALLADIUM-NICKEL AT MATING INTERFACE AND
2.54um MIN MATTE TIN ON SOLDER TAILS.
- MAGNETICS
APPLICATION: 10/100/1000 BASE-T
IMPEDANCE: 100 OHMS
TURNS RATIO (CHIP: CABLE): 1:1 ALL FOUR PAIRS
OPEN CIRCUIT INDUCTANCE (OCL): 350uH MIN @100kHz, 0.1VRMS,
8mADC BIAS FROM -40°C TO 85°C, ALL FOUR PAIRS
ALL FOUR PAIRS BI-DIRECTIONAL
PERFORMANCE @ 25°C:
INSERTION LOSS (IL): 1.1dB MAX FROM 0.5MHz TO 100MHz
RETURN LOSS (RL): 18dB MIN FROM 0.5MHz TO 40MHz
12-20LOG(f/80)dB MIN FROM 40.1MHz TO 100MHz
CROSSTALK ATTENUATION: 35dB MIN FROM 0.5MHz TO 40MHz
33-20LOG(f/50)dB MIN FROM 40.1MHz TO 100MHz
COMMON MODE REJECTION RATIO (CMRR): 30dB MIN FROM 0.5MHz TO 100MHz
- PART NUMBER, DATE CODE AND COUNTRY OF ORIGIN ARE
LOCATED IN APPROXIMATE AREA SHOWN.
DATE CODE: YYWW WHERE "YY" IS YEAR, "WW" IS WORK WEEK, "D" IS DAY
OF WEEK, WITH SUNDAY =1
- TRP CONNECTOR LOGO AND AGENCY APPROVAL LOGO ARE
LOCATED IN APPROXIMATE AREA SHOWN.
5. OPERATING TEMP: FROM -40°C TO 85°C.
6. RJ45 CAVITY CONFORMS TO FCC RULES AND REGULATION PART 68 SUBPART F.
- INDICATED MAGNETIC CONNECTIONS ARE SYMMETRICAL AND
SUPPORT AUTO-MDI/MDIX.
- DATUM AND BASIC DIMENSION ESTABLISHED BY CUSTOMER.
- BASIC DIMENSION ESTABLISHED BY CUSTOMER, BUT MAY NOT BE
GREATER THAN 5.08mm.
10. THE PARTS ARE RECOMMENDED FOR WAVE SOLDERING PROCESS,
PEAK TEMPERATURE 260°C MAX, 10 SECONDS MAX.



THIS DRAWING IS A CONTROLLED DOCUMENT.				DWN 07DEC2012 RICK LI/TERRY LIN		 DONGGUAN CHINA	
				CHK 07DEC2012 TOMMY REN	07DEC2012		
				APVD 07DEC2012 KEITH ZHU	07DEC2012	MODEL NAME	
				MAGJACK		DESC	
				STACK NON-POE		2X2 S8G134DET GIGABIT W/O LED	
PRODUCT SPEC				APPLICATION SPEC		SIZE	RESTRICTED TO
108-104004				-		A1	-
CUSTOMER DRAWING				SCALE		SHEET	REV
				NTS		2	8



THIS DRAWING IS A CONTROLLED DOCUMENT.				DWG 07DEC2012 RICK LI/TERRY LIN		trp CONNECTOR		DONGGUAN CHINA	
DIMENSIONS: mm				CHK 07DEC2012 TOMMY REN		APVD 07DEC2012 KEITH ZHU		MODEL NAME	
TOLERANCES UNLESS OTHERWISE SPECIFIED:				DESC		SIZE		CAGE CODE	
0 PLC \pm				1 PLC \pm		2 PLC ± 0.25		3 PLC \pm	
4 PLC \pm				ANGLES		DRAWING NO		RESTRICTED TO	
PRODUCT SPEC 108-104004				APPLICATION SPEC		A1		C=1840041	
CUSTOMER DRAWING				SCALE		SHEET 3 OF 4		REV 8	

