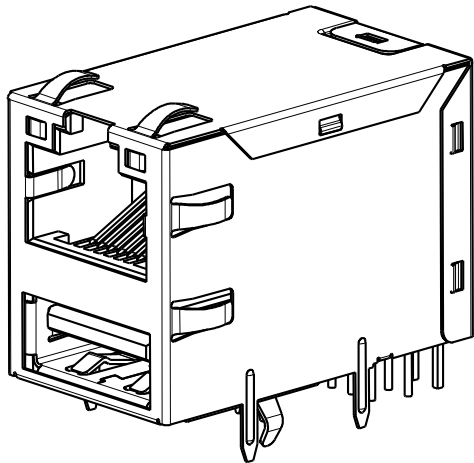
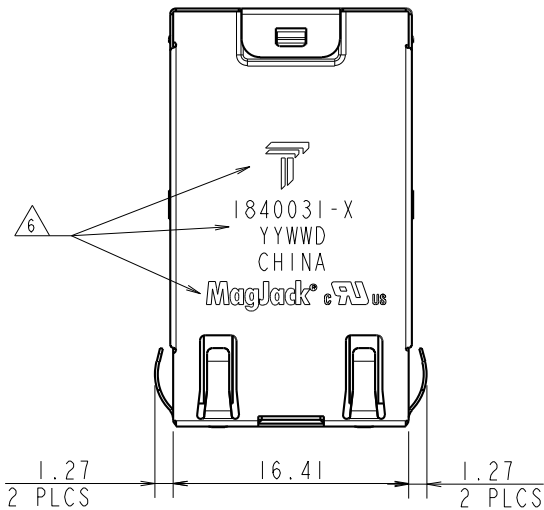
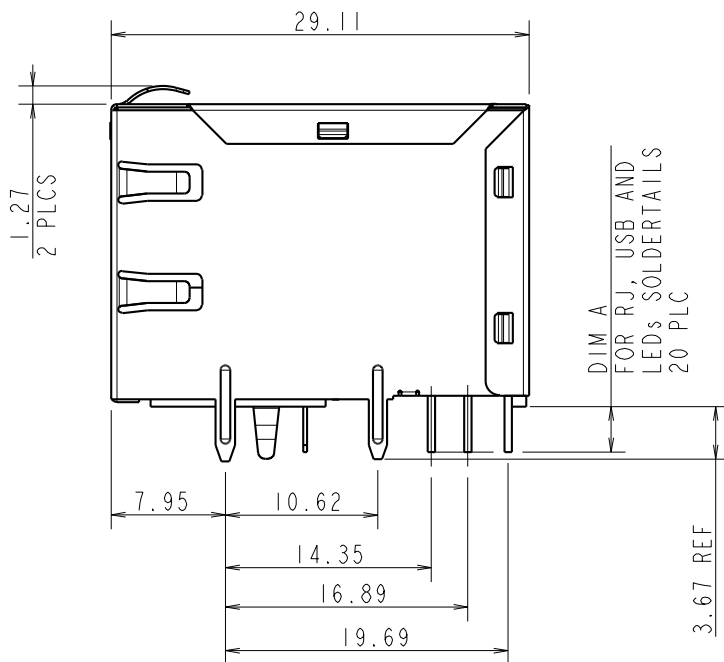
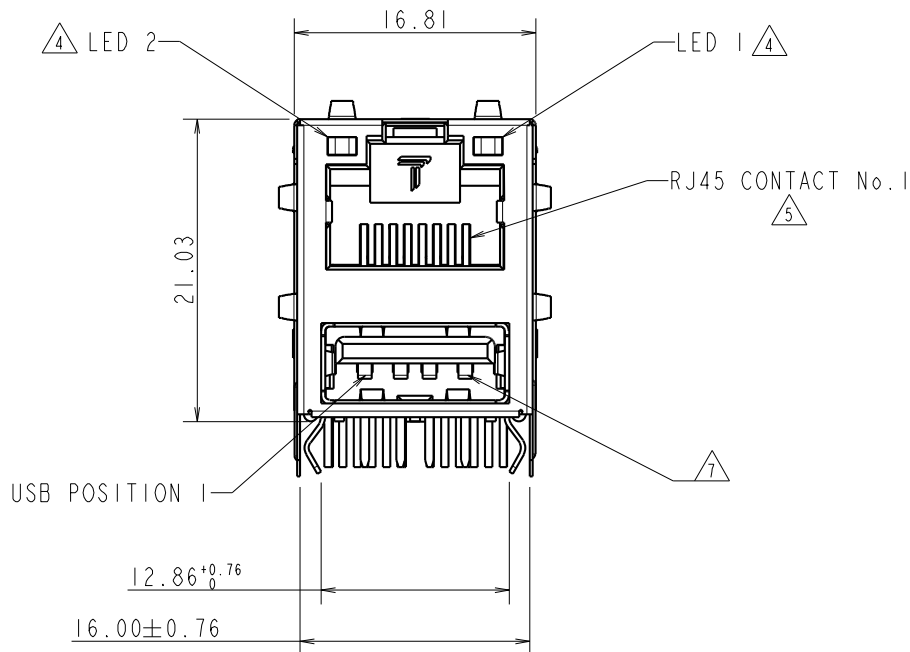


REVISIONS					
P	LTR	DESCRIPTION	DATE	DWN	APVD
	G	EC-1411035, LOGO CHANGE	30DEC2014	JC	TY

D



C



B

A

1. RJ45 MATERIALS
- HOUSING: THERMOPLASTIC, BLACK, FLAMMABILITY RATED UL 94V-0
 - SHIELD: BRASS, 0.2 mm THICK
 - PREPLATED WITH MIN 0.76 μ m SEMI-BRIGHT NICKEL
 - POST DIPPED WITH 2.54 μ m MIN SAC SOLDER AT GROUND PINS.
 - CONTACT: PHOSPHOR BRONZE, PLATED WITH 1.27 μ m MIN OVERALL NICKEL
 - UNDERPLATE, SELECTIVE 1.27 μ m MIN GOLD AT MATING INTERFACE AND 2.54 μ m MIN MATTE TIN ON SOLDER TAILS. OR 1.27 μ m MIN NICKEL UNDERPLATE, WITH 0.05 μ m GOLD PLATING OVER 0.76 μ m MIN PALLADIUM NICKEL PLATING AT MATING INTERFACE AND 2.54 μ m MIN MATTE TIN ON SOLDER TAILS.
 - SOLDER TAIL: COPPER STEEL, PLATED WITH 2.54 μ m MIN MATTE TIN
 - LED: DIFFUSED EPOXY LENS, 0.5 mm SQUARE CARBON STEEL WIREFRAME
 - LEADS PREPLATED WITH 2.03 μ m MIN SILVER OVER 1.02 μ m MIN NICKEL OVER 1.02 μ m MIN COPPER UNDERPLATE
 - POST PLATED WITH 2.54 μ m MIN MATTE TIN OR SAC TIN SOLDER DIP
- USB MATERIALS:
- HOUSING: THERMOPLASTIC, FLAMMABILITY RATED UL 94V-0
 - CONTACT: COPPER ALLOY WITH 0.76 MIN GOLD PLATING OVER 1.27 μ m MIN OVERALL NICKEL UNDERPLATE
 - SHELL: COPPER ALLOY, PREPLATED WITH MIN 0.76 μ m SEMI-BRIGHT NICKEL, 2.54 μ m TIN PLATED

2. MAGNETICS
- APPLICATION: 10/100/1000 BASE-T
 - IMPEDANCE: 100 OHMS
 - TURNS RATIO (CHIP:CABLE): 1:1 ALL FOUR PAIRS
 - OPEN CIRCUIT INDUCTANCE (OCL): 350 μ H MIN @100kHz, 0.1VRMS, 8mADC BIAS FROM 0°C TO 70°C, ALL FOUR PAIRS
 - ALL FOUR PAIRS BI-DIRECTIONAL
 - PERFORMANCE @ 25°C:
 - INSERTION LOSS (IL): 1.1dB MAX FROM 0.5MHz TO 100MHz
 - RETURN LOSS (RL): 18dB MIN FROM 0.5MHz TO 40MHz
 - 12-20LOG(f/80)dB MIN FROM 40.1MHz TO 100MHz
 - CROSSTALK ATTENUATION: 35dB MIN FROM 0.5MHz TO 40MHz
 - 33-20LOG(f/50)dB MIN FROM 40.1MHz TO 100MHz
 - COMMON MODE REJECTION RATIO (CMRR): 30dB MIN FROM 0.5MHz TO 100MHz
 - ISOLATION VOLTAGE: 2250VDC (MAX) FOR 60 SECONDS WITH A RISE TIME OF 500V/SEC AND WITH ALL PORTS CONNECTED.

3. OPERATING TEMPERATURE 0°C TO +70°C.

4. LED IS DRIVEN WITH CONSTANT CURRENT APPROX 20 mA
- DOMINANT WAVE LENGTH(λ D): GREEN 568 nm TYP, AT IF=20mA
 - FORWARD VOLTAGE(VF): GREEN 2.2V AT IF=20mA
 - DOMINANT WAVE LENGTH(λ D): YELLOW 588 nm TYP, AT IF=20mA
 - FORWARD VOLTAGE(VF): YELLOW 2.1V AT IF=20mA
 - DOMINANT WAVE LENGTH(λ D): ORANGE 608 nm TYP, AT IF=20mA
 - FORWARD VOLTAGE(VF): ORANGE 2.1V AT IF=20mA


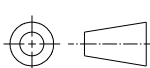
5. RJ45 CAVITY CONFORMS TO FCC RULES AND REGULATION PART 68 SUBPART F.

6. TRP CONNECTOR LOGO, PART NUMBER, DATE CODE, COUNTRY OF ORIGIN AND AGENCY LOGO TO BE MARKED IN APPROXIMATE LOCATION SHOWN. DATE CODE YYWW WHERE YY IS YEAR, WW IS WORK WEEK, D IS DAY OF WEEK, WITH SUNDAY = 1

7. MATING INTERFACE COMPLIES WITH USB SPECIFICATION REV 2.0.

8. THESE PARTS ARE RECOMMENDED FOR WAVE SOLDERING PROCESS, PEAK SOLDERING TEMPERATURE IS 260 °C MAX, 10 SECONDS MAX.

3.56	GREEN	YELLOW	1840031-5
3.56	GREEN/ORANGE	GREEN	1840031-4
3.56	GREEN	GREEN	1840031-3
3.18	GREEN/ORANGE	YELLOW	1840031-2
3.18	GREEN	GREEN	1840031-1
DIM A	LED 2	LED 1	PART NUMBER

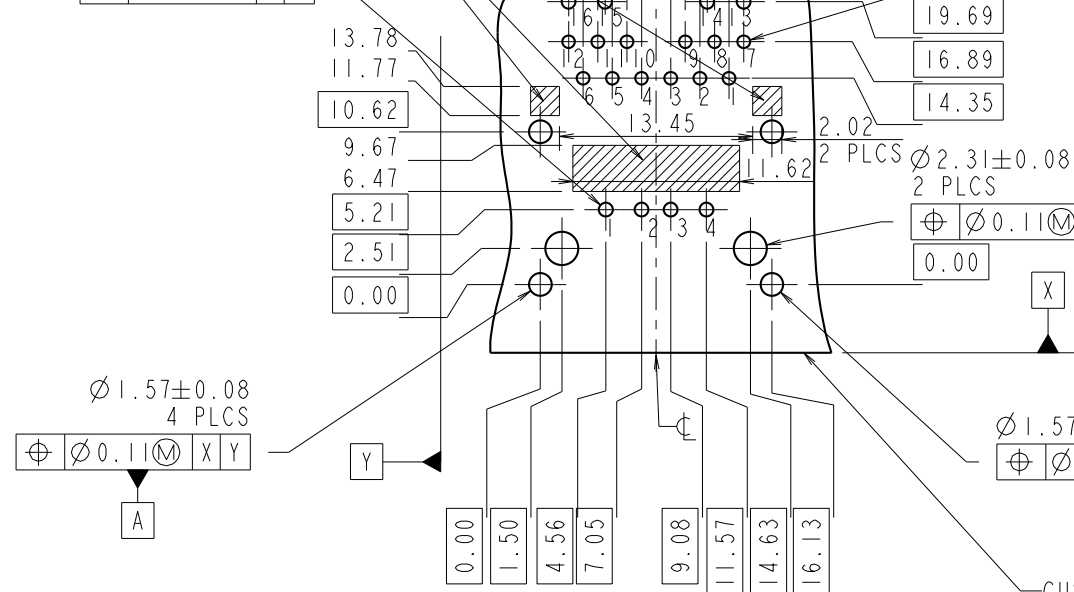
THIS DRAWING IS A CONTROLLED DOCUMENT.		DWN 15JUN2009 RICHARD QIAN		 trp CONNECTOR a bel group		DONGGUAN CHINA	
		CHK 15JUN2009 LIJUN RAO					
		APVD 15JUN2009 KENNETH LAI					
DIMENSIONS: mm		TOLERANCES UNLESS OTHERWISE SPECIFIED:		PRODUCT SPEC			
		0 PLC ±-		NAME MAGJACK OVER SINGLE USB URG41, GIGABIT CIRCUIT, W/ LEDS			
		1 PLC ±-					
		2 PLC ±0.25					
		3 PLC ±0.25		SIZE A3			
		4 PLC ±-					
		ANGLES ±-		DRAWING NO C=1840031			
PRODUCT SPEC		APPLICATION SPEC					
108-104005		-		CUSTOMER DRAWING			
				SHEET 1 OF 2			

IT IS RECOMMENDED THAT THE SHADED AREA OF CUSTOMER PC BOARD SHOULD BE CLEAR OF ANY VIA HOLE, COMPONENT AND CIRCUIT TRACE

$\varnothing 0.97 \pm 0.08$
 4 PLCS PINOUTS OF USB
 $\oplus \varnothing 0.11 \text{ (M) } \begin{matrix} A & B \end{matrix}$

$\varnothing 0.97 \pm 0.08$
 4 PLCS PINOUTS OF LED
 $\oplus \varnothing 0.11 \text{ (M) } \begin{matrix} A & B \end{matrix}$

$\varnothing 0.89 \pm 0.08$
 12 PLCS PINOUTS OF RJ45
 WITH INTEGRATED MAGNETICS
 $\oplus \varnothing 0.11 \text{ (M) } \begin{matrix} A & B \end{matrix}$



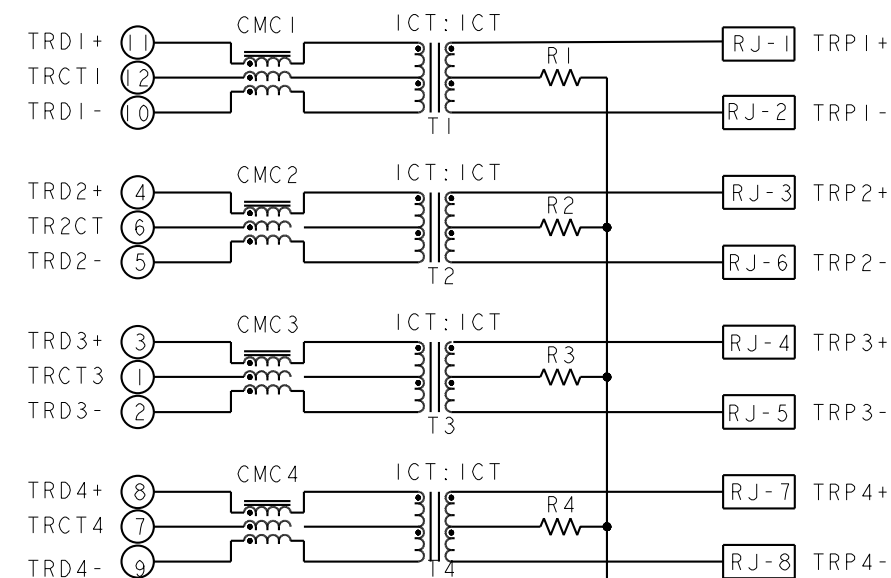
4.750 REF.
 (DETERMINED BY CUSTOMER)

$\varnothing 1.57 \pm 0.08$ REF
 $\oplus \varnothing 0.11 \text{ (M) } \begin{matrix} X & Y \end{matrix}$

CUSTOMER PCB FRONT EDGE

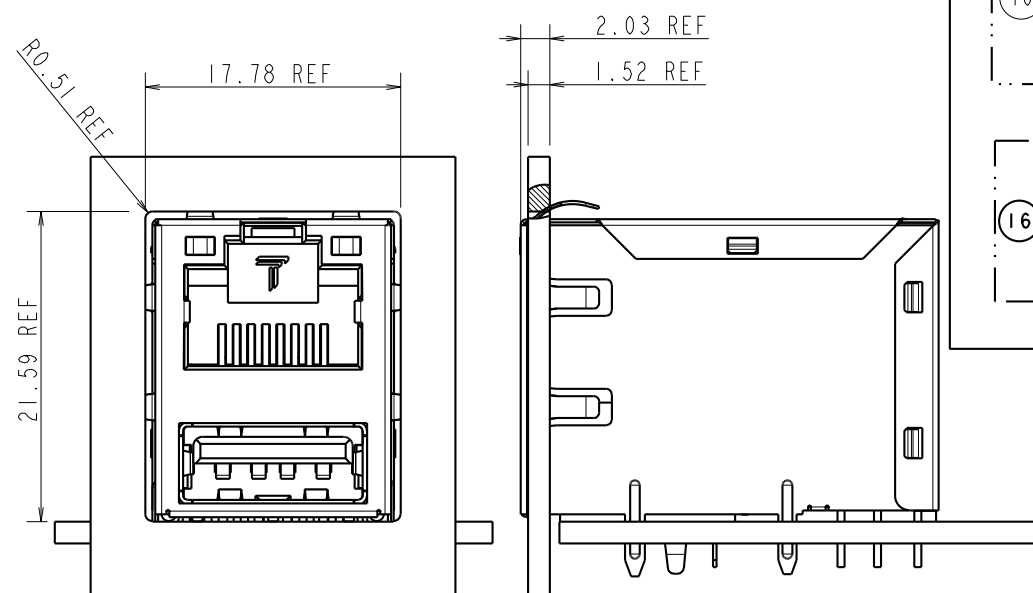
RECOMMENDED PCB FOOTPRINT
 COMPONENT SIDE SHOWN

URG41 GIGABIT CIRCUIT

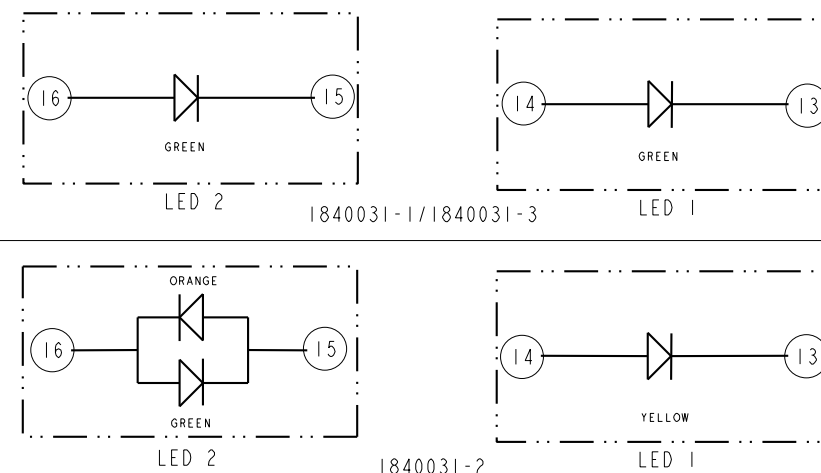
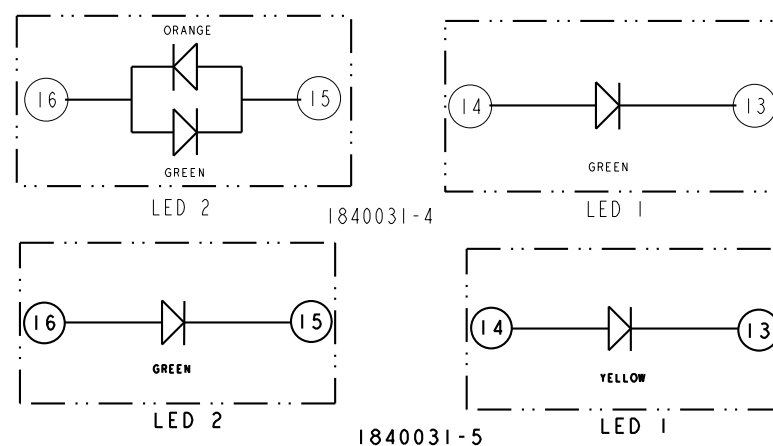


R1-R4=75 OHMS, 1/16W, 5%
 C1=1000pF, 2kV, 10%, X7R

SHIELD

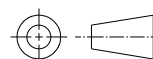


SUGGESTED PANEL
 CUT-OUT DIMENSION



THIS DRAWING IS A CONTROLLED DOCUMENT.

DIMENSIONS:
 mm



PRODUCT SPEC
 108-104005

TOLERANCES UNLESS
 OTHERWISE SPECIFIED:

0 PLC \pm
 1 PLC \pm
 2 PLC ± 0.25
 3 PLC ± 0.25
 4 PLC \pm
 ANGLES \pm

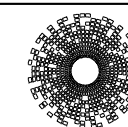
APPLICATION SPEC

-

DWN 15JUN2009
 RICHARD QIAN
 CHK 15JUN2009
 LIJUN RAO
 APVD 15JUN2009
 KENNETH LAI
 PRODUCT SPEC

MAGJACK
 OVER USB NON-PoE

CUSTOMER DRAWING



trp CONNECTOR
 a bel group

DONGGUAN
 CHINA

NAME MAGJACK OVER SINGLE USB
 URG41, GIGABIT CIRCUIT, W/ LEDS

SIZE A3 CAGE CODE DRAWING NO C-1840031 RESTRICTED TO -

SCALE 2:1 SHEET 2 OF 2 REV G