

THE INFORMATION CONTAINED HEREIN IS CONSIDERED "PROPRIETARY" TO BEL FUSE INC. AND SHALL NOT BE COPIED, REPRODUCED OR DISCLOSED WITHOUT THE WRITTEN APPROVAL OF BEL FUSE INC.

| LED 2 & 4 POLARITY | | | LED 1 & 3 POLARITY | | |
|--------------------|--------|--------|--------------------|--------|--------|
| PIN 15 | PIN 16 | COLOR | PIN 17 | PIN 18 | COLOR |
| - | + | ORANGE | - | + | ORANGE |
| + | - | GREEN | + | - | GREEN |

PRELIMINARY



ELECTRICAL CHARACTERISTICS @ 25°C

TURNS RATIO

| | |
|-----|---------------|
| TP1 | 1CT : 1CT ±2% |
| TP2 | 1CT : 1CT ±2% |
| TP3 | 1CT : 1CT ±2% |
| TP4 | 1CT : 1CT ±2% |

□CL @ 100kHz/100mVRMS

(-40°C - +85°C) 180 μH MIN.

19mA DC BIAS (-40°C - +85°C) 120 μH MIN.

INS. LOSS

1MHz TO 150MHz -0,004(fMHz)-0,4 dB MAX

RET. LOSS

1MHz-40MHz -20 dB MIN

40.1MHz-150MHz -20+15LOG(f/40MHz) dB MIN

CROSS TALK

1MHz - 40MHz -35 dB MIN

40.1MHz-150MHz -35+15LOG(f/40MHz) dB MIN

CM TO CM REJ

1MHz - 150MHz -25 dB MIN

HIPOT (Isolation Voltage): 2250 VDC

100% OF PRODUCTION TESTED TO COMPLY WITH IEEE 802.3 ISOLATION REQUIREMENTS.

NOTE: PORT-TO-PORT ISOLATION NOT INCLUDED .

BALANCED DC LINE CURRENT 720 mA MAX. @ 57 VDC CONTINUOUS

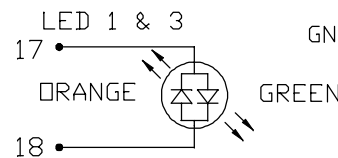
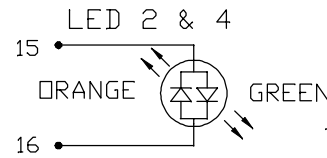
1.2A MAX. @ 57 VDC FOR 200 MILLISECONDS

LEDS 1, 2, 3 AND 4

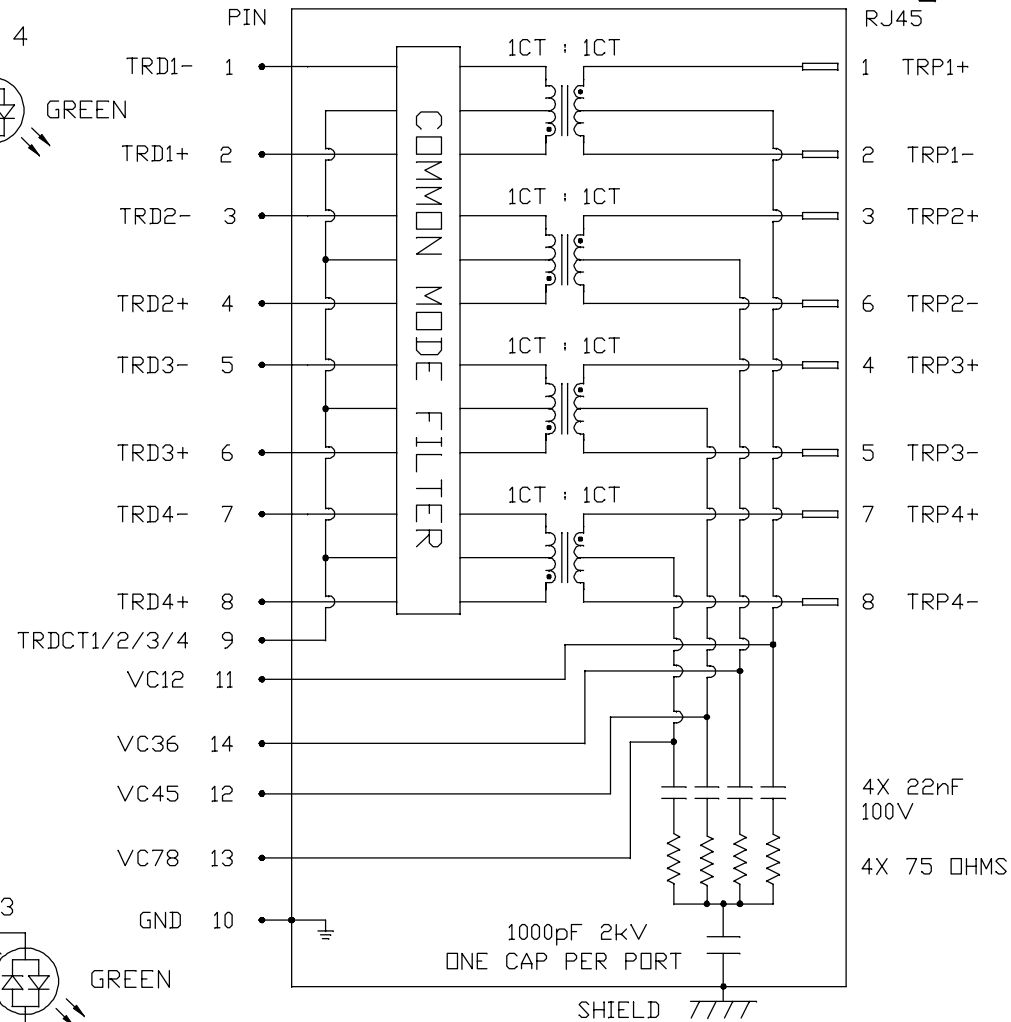
VF (FORWARD VOLTAGE) IF=20mA ORANGE 2.0V TYP.
GREEN 2.2V TYP.

λD (DOMINANT WAVELENGTH) IF=20mA ORANGE 605nm TYP.
GREEN 570nm TYP.

OPERATING TEMPERATURE: -40°C TO +85°C.



SCHEMATIC



| | |
|--------------------------------|--|
| ORIGINATED BY CHOW WANCHUNG | TITLE 2X2 2.5 gigabit MagJack® 4PPoE PATENTED |
| DATE 2017-04-07 | |
| DRAWN BY LI LINFENG | |
| DATE 2017-04-07 | |

| |
|--|
| PART NO. / DRAWING NO. 0895-2B2J-JD |
| FILE NAME 0895-2B2J-JD_PE.DWG |

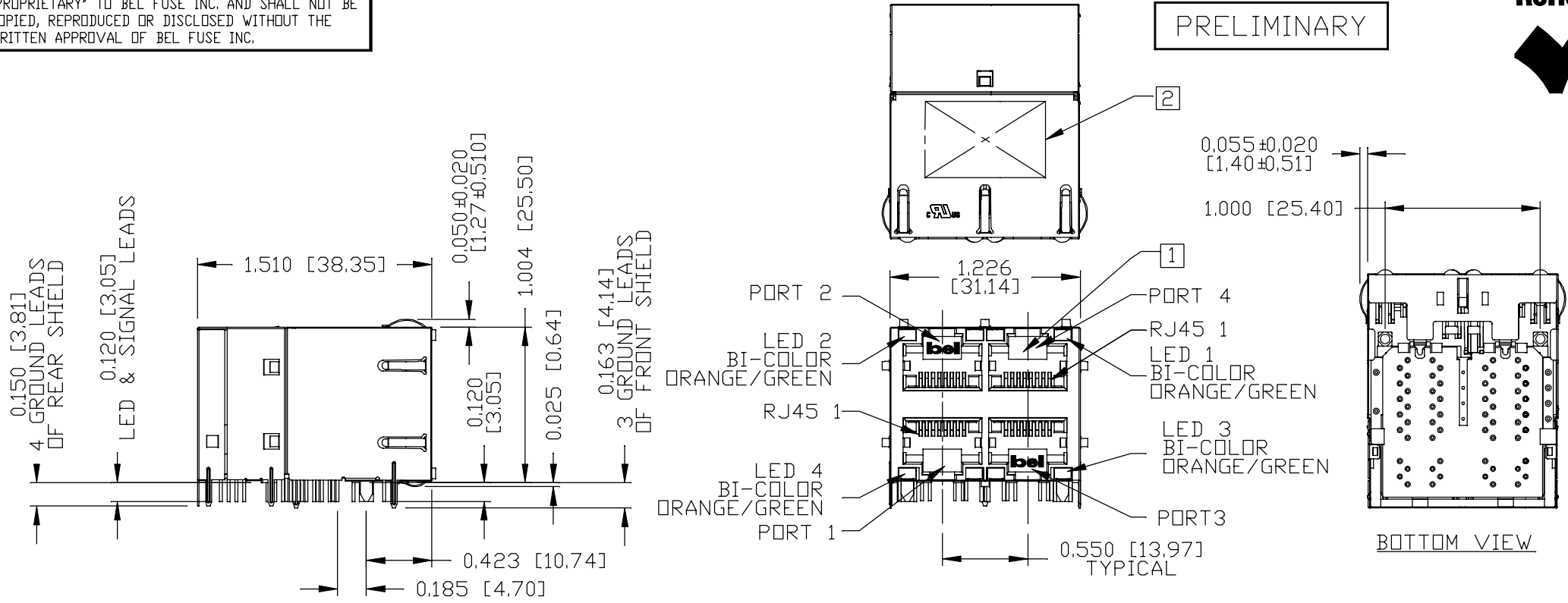
| | |
|-------------------------------|----------------------------|
| STANDARD DIM. TOL. IN INCH | [] METRIC DIM. AS REF. |
| .X | UNIT : INCH [mm] |
| .XX | SCALE : N/A |
| .XXX | SIZE : A4 |

| | |
|-----------|----------|
| REV. : PE | PAGE : 2 |
|-----------|----------|



THE INFORMATION CONTAINED HEREIN IS CONSIDERED "PROPRIETARY" TO BEL FUSE INC. AND SHALL NOT BE COPIED, REPRODUCED OR DISCLOSED WITHOUT THE WRITTEN APPROVAL OF BEL FUSE INC.

RoHS



NOTES:

PLASTIC HOUSING: THERMOPLASTIC PBT, BLACK
FLAMMABILITY RATING UL 94V-0

CONTACT PLATING: 50 MICRO-INCH HARD GOLD PLATING OR EQUIVALENT.

OUTPUT PINS: TIN-COATED COPPER WIRE, DIA 0.018 INCH,
100 MICRO-INCH MIN MATTE TIN, PINS ARE SOLDER DIPPED.

METAL SHIELD: NICKEL PLATED ON COPPER ALLOY,
(ALL GROUND LEADS ARE SOLDER DIPPED)

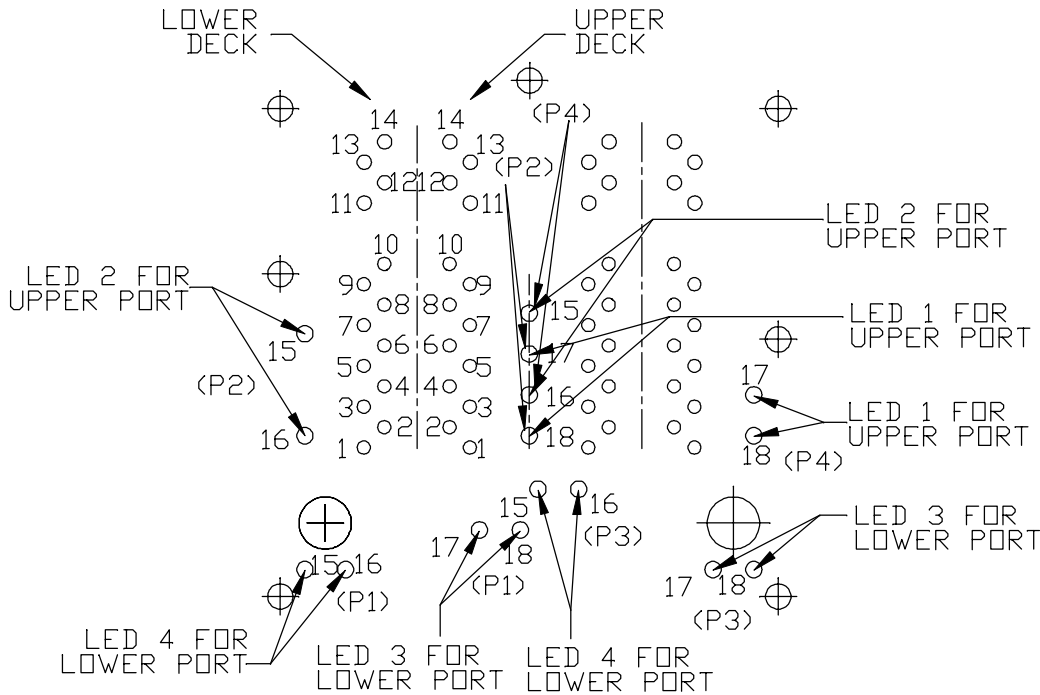
- JACK CAVITY CONFORMS TO FCC RULES AND REGULATIONS, PART 68 SUBPART F.
- MARK PART WITH MFG LOGO, PART NUMBER, DATE CODE, MFG NAME AND PATENTED.

- THE PRODUCT IS RoHS COMPLIANT.
- UL RECOGNIZED - FILE #E196366 AND E169987.
- THE PRODUCT IS PATENTED, THE PATENT NUMBER ARE U.S. PAT. 6,840,817 AND U.S. PAT. 7,123,117.
- THE PART IS RECOMMENDED FOR WAVE SOLDERING. THE SUGGESTED PEAK WAVE SOLDERING CONDITION IS 260°C MAX AND 10 SECONDS MAX.

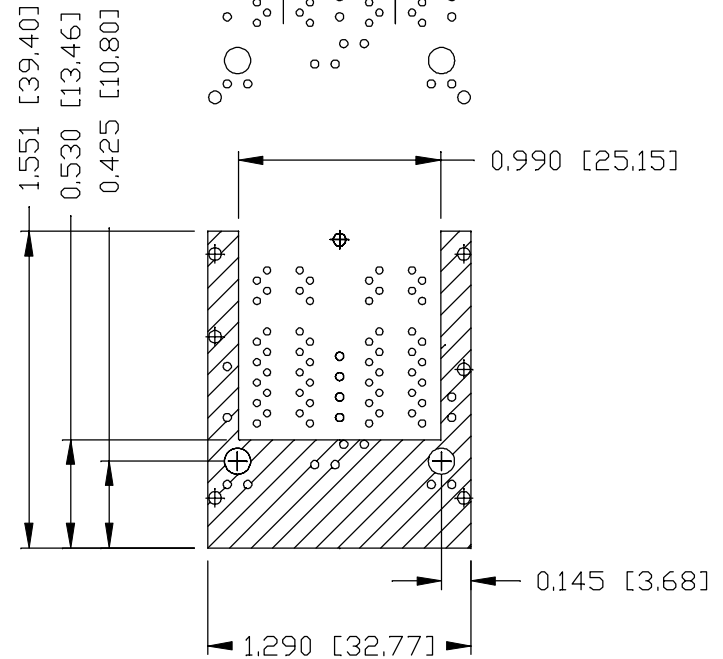
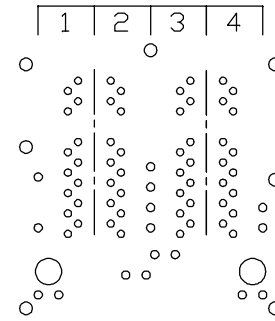
| | | | | | | | | | |
|--|--|---|--|---|--|---|--|----------------------------------|--|
| ORIGINATED BY ANTON LIAO DATE 2017-04-07 | | TITLE 2X2 2.5 gigabit MagJack® 4PPoE PATENTED | | PART NO. / DRAWING NO. 0895-2B2J-JD | | STANDARD DIM. TOL. IN INCH [] METRIC DIM. AS REF. | | REV. : PE PAGE : 3 | |
| DRAWN BY LIU DONGJUN DATE 2017-04-07 | | FILE NAME 0895-2B2J-JD_PE.DWG | | .X .XX .XXX ±0.010 | | UNIT : INCH [mm] SCALE : N/A SIZE : A4 | | | |

THE INFORMATION CONTAINED HEREIN IS CONSIDERED "PROPRIETARY" TO BEL FUSE INC. AND SHALL NOT BE COPIED, REPRODUCED OR DISCLOSED WITHOUT THE WRITTEN APPROVAL OF BEL FUSE INC.

PRELIMINARY



PORT ASSIGNMENT
(COMPONENT SIDE VIEW)



PIN-OUT INFORMATION
(COMPONENT SIDE VIEW)

| | | | |
|----|--------------|----|----------------------|
| 10 | GND | | |
| 9 | TRDCT1/2/3/4 | | |
| 8 | TRD 4+ | 18 | ORANGE (+)/GREEN (-) |
| 7 | TRD 4- | 17 | ORANGE (-)/GREEN (+) |
| 6 | TRD 3+ | 16 | ORANGE (+)/GREEN (-) |
| 5 | TRD 3- | 15 | ORANGE (-)/GREEN (+) |
| 4 | TRD 2+ | 14 | VC36 |
| 3 | TRD 2- | 13 | VC78 |
| 2 | TRD 1+ | 12 | VC45 |
| 1 | TRD 1- | 11 | VC12 |

THE SHADED AREA ON THE CUSTOMER BOARD ARE RECOMMENDED TO BE CLEAR OFF ANY VIA HOLE OR COMPONENT PAD.

REV. : PE PAGE : 4

ORIGINATED BY
ANTON LIAO
DATE 2017-04-07

DRAWN BY
LIU DONGJUN
DATE 2017-04-07

TITLE
2X2 2.5 gigabit MagJack®
4PPoE
PATENTED

PART NO. / DRAWING NO.
0895-2B2J-JD

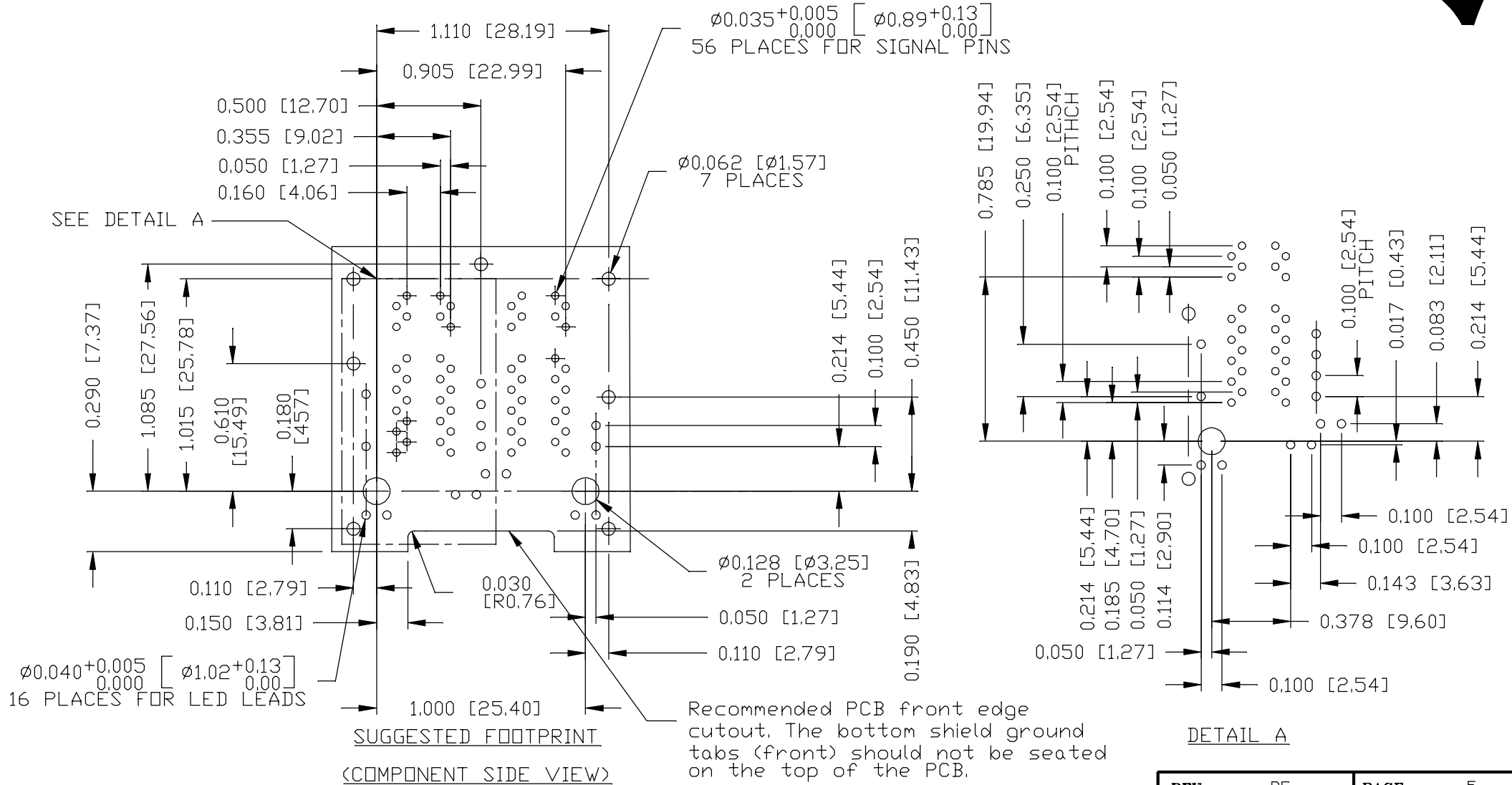
FILE NAME
0895-2B2J-JD_PE.DWG

| | |
|-------------------------------|----------------------------|
| STANDARD DIM. TOL. IN INCH | [] METRIC DIM. AS REF. |
| .X | UNIT : INCH [mm] |
| .XX | SCALE : N/A |
| .XXX ±0.004 | SIZE : A4 |



THE INFORMATION CONTAINED HEREIN IS CONSIDERED "PROPRIETARY" TO BEL FUSE INC. AND SHALL NOT BE COPIED, REPRODUCED OR DISCLOSED WITHOUT THE WRITTEN APPROVAL OF BEL FUSE INC.

PRELIMINARY



ORIGINATED BY
ANTON LIAD
DATE 2017-04-07
DRAWN BY
LIU DONGJUN
DATE 2017-04-07

TITLE
2X2 2.5 gigabit MagJack®
4PPoE
PATENTED

PART NO. / DRAWING NO.
0895-2B2J-JD
FILE NAME
0895-2B2J-JD_PE.DWG

STANDARD DIM. [] METRIC DIM.
TOL. IN INCH AS REF.
.X
.XX
.XXX #0.004
UNIT : INCH [mm]
SCALE : N/A
SIZE : A4

REV. : PE PAGE : 5

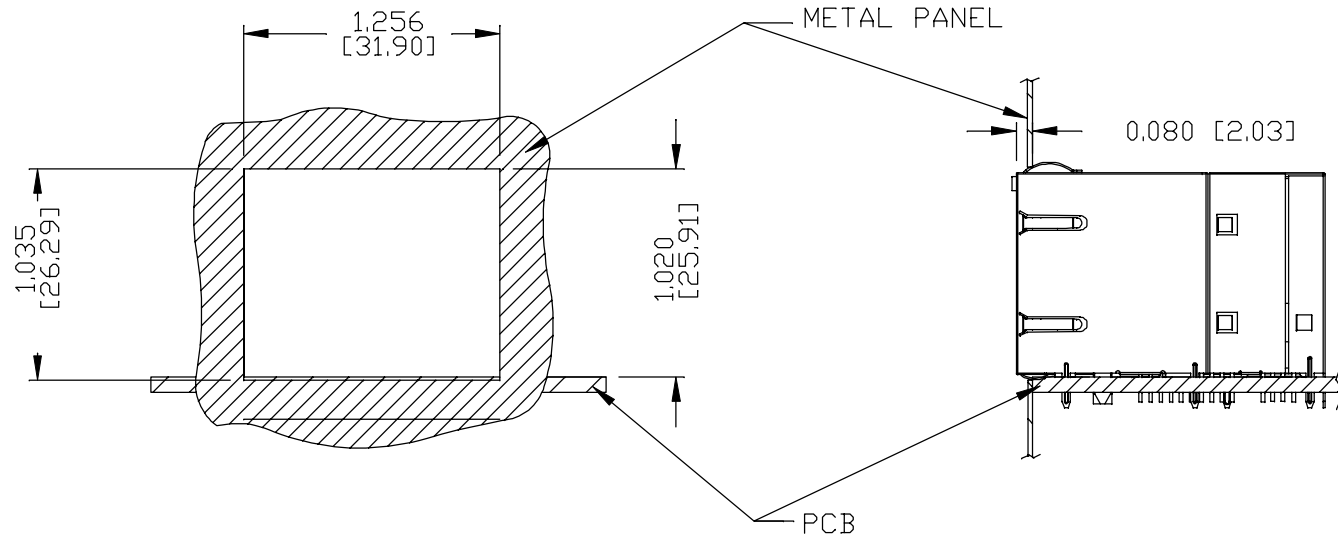


THE INFORMATION CONTAINED HEREIN IS CONSIDERED 'PROPRIETARY' TO BEL FUSE INC. AND SHALL NOT BE COPIED, REPRODUCED OR DISCLOSED WITHOUT THE WRITTEN APPROVAL OF BEL FUSE INC.

PRELIMINARY



SUGGESTED PANEL OPENING



NOTE:

THE DISTANCE OF PANEL INSIDE SURFACE RELATIVE TO FRONT SURFACE OF PART IS ONLY A SUGGESTION. IN CASE THIS DISTANCE IS DIFFERENT, THE REQUIRED PANEL OPENING DIMENSIONS CHANGE ACCORDINGLY.

PACKING INFORMATION

PACKING TRAY : 0200M9999-H0 (TOP)
0200M9999-H1 (BOTTOM)

PACKING QUANTITY : 32 PCS FINISHED GOODS PER TRAY
7 TRAYS (224 PCS FINISHED GOODS) PER CARTON BOX

NOTE : CARDBOARDS ARE PLACED BETWEEN LAYERS OF PACKING TRAY INSIDE CARTON BOX (INCLUDE THE UPPERMOST AND LOWERMOST TRAY)

REV. : PE PAGE : 6

ORIGINATED BY
ANTON LIAO
DATE 2017-04-07

DRAWN BY
LIU DONGJUN
DATE 2017-04-07

TITLE
2X2 2.5 gigabit MagJack®
4PPoE
PATENTED

PART NO. / DRAWING NO.
0895-2B2J-JD

FILE NAME
0895-2B2J-JD_PE.DWG

| STANDARD DIM. TOL. IN INCH | | [] METRIC DIM. AS REF. |
|----------------------------|--------|-------------------------|
| .X | | UNIT : INCH [mm] |
| .XX | | SCALE : N/A |
| .XXX | ±0.004 | SIZE : A4 |

