

THE INFORMATION CONTAINED HEREIN IS CONSIDERED "PROPRIETARY" TO BEL FUSE INC. AND SHALL NOT BE COPIED, REPRODUCED OR DISCLOSED WITHOUT THE WRITTEN APPROVAL OF BEL FUSE INC.

PRELIMINARY

RoHS



LED 2 & 4 POLARITY			LED 1 & 3 POLARITY		
PIN 11	PIN 12	COLOR	PIN 13	PIN 14	COLOR
+	-	GREEN	+	-	GREEN

ELECTRICAL CHARACTERISTICS @ 25°C

URNS RATIO

TP1	1CT : 1CT ±2%
TP2	1CT : 1CT ±2%

QCL @ 100kHz/100mVRMS

8mA DC BIAS (0°C - 70°C)	350μH MIN.
--------------------------	------------

INS. LOSS

0.1MHz TO 1MHz	-1.1 dB MAX
1MHz TO 65MHz	-0.5 dB MAX
65MHz TO 100MHz	-1.0 dB MAX

RET. LOSS (MIN) @ 100ΩHMS ±15%

0.5MHz-40MHz	-18 dB
40MHz-80MHz	-12+20LOG(f/80MHz) dB

CM TO CM REJ

100kHz - 100MHz	-30 dB MIN
-----------------	------------

CM TO DM REJ

100kHz - 100MHz	-35 dB MIN
-----------------	------------

HIPOT (Isolation Voltage): 1500 Vrms

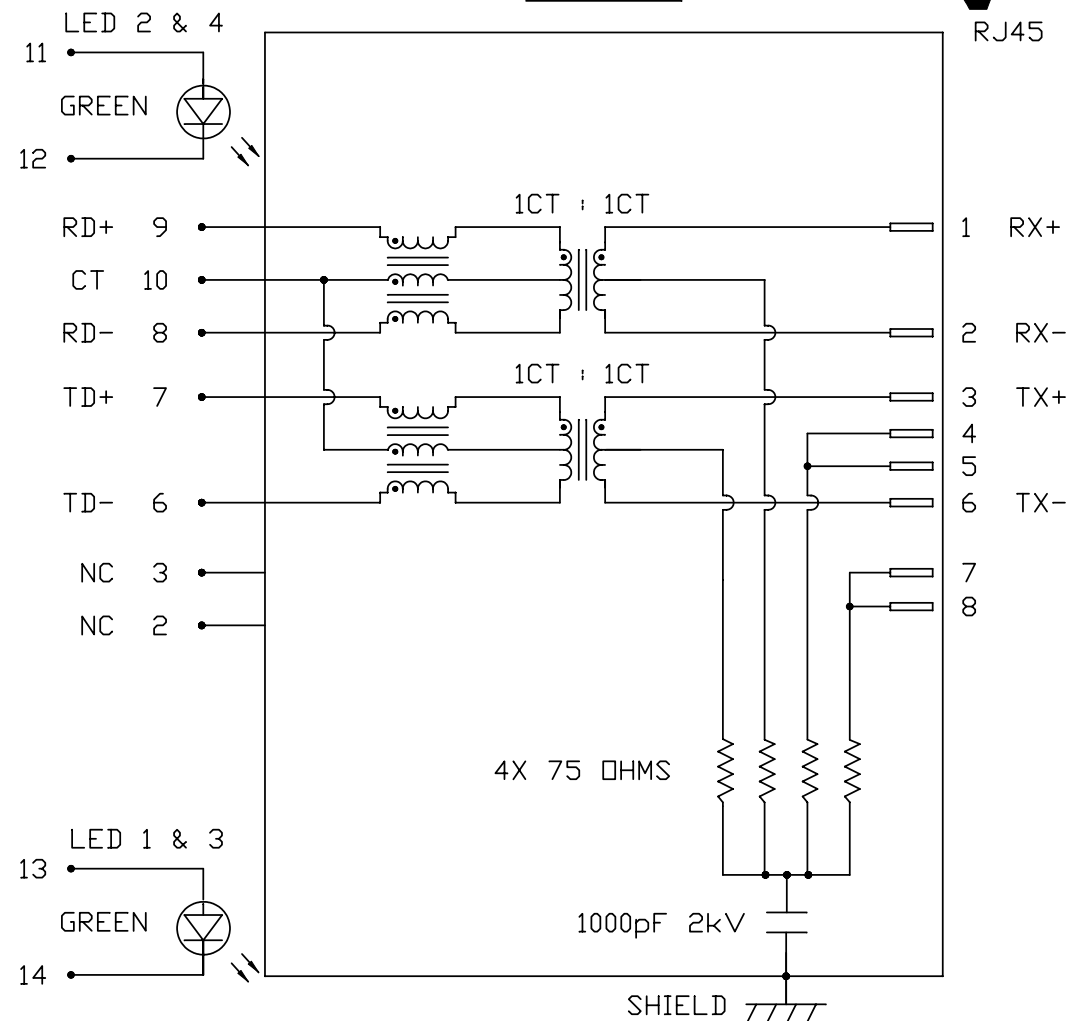
100% OF PRODUCTION TESTED TO COMPLY WITH IEEE 802.3 ISOLATION REQUIREMENTS

LEDS 1, 2, 3 AND 4

VF (FORWARD VOLTAGE)	IF=20mA GREEN	2.2V TYP.
----------------------	---------------	-----------

λD (DOMINANT WAVELENGTH)	IF=20mA GREEN	565nm TYP.
--------------------------	---------------	------------

SCHEMATIC



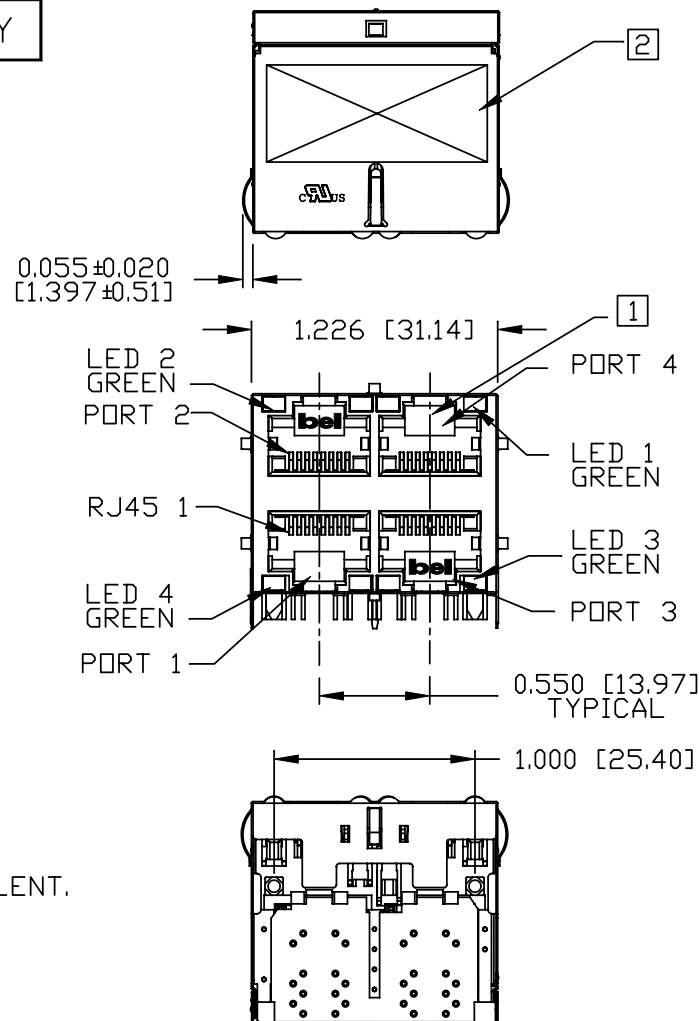
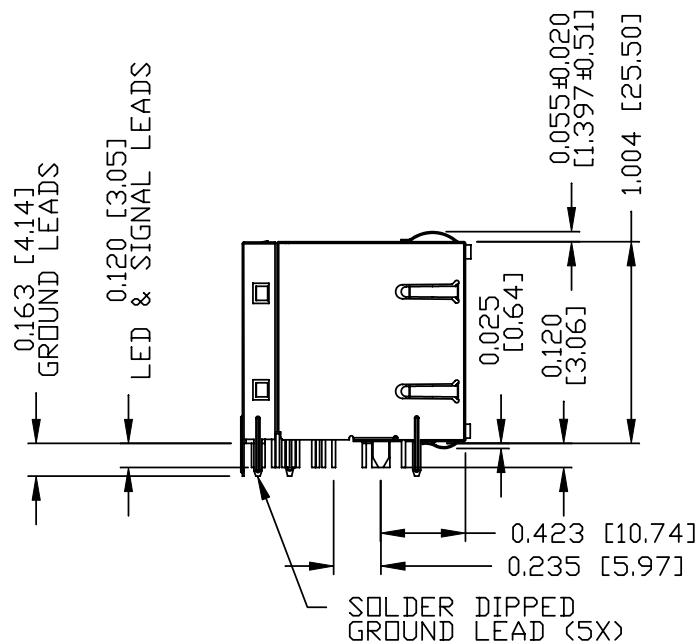
ORIGINATED BY	DATE	TITLE	PART NO. / DRAWING NO.	STANDARD DIM. TOL. IN INCH	[] METRIC DIM. AS REFERENCE	
CHOW WANCHUNG	2012-01-10	2X2 MagJack® WITH UPPER AND LOWER LED (4 Cores) PATENTED	0879-2G2R-M9	.X .XX .XXX	UNIT : INCH [mm] SCALE : N/A PAGE : 2	REV. : PD SIZE : A4
DRAWN BY	DATE		FILE NAME			
WEIDE LEE	2012-01-10		0879-2G2R-M9_PD.DWG			



THE INFORMATION CONTAINED HEREIN IS CONSIDERED "PROPRIETARY" TO BEL FUSE INC. AND SHALL NOT BE COPIED, REPRODUCED OR DISCLOSED WITHOUT THE WRITTEN APPROVAL OF BEL FUSE INC.

PRELIMINARY

RoHS



NOTES:

PLASTIC HOUSING: THERMOPLASTIC PBT
FLAMMABILITY RATING UL 94V-0
CONTACT PLATING: 50 MICRO-INCH HARD GOLD PLATING OR EQUIVALENT.
OUTPUT PINS: TIN-COATED COPPER WIRE, DIA 0.018 INCH.
METAL SHIELD: NICKEL PLATED ON COPPER ALLOY.
(ALL GROUND LEADS ARE SOLDER DIPPED)

1. JACK CAVITY CONFORMS TO FCC RULES AND REGULATIONS, PART 68 SUBPART F.
2. MARK PART WITH MFG LOGO, MFG NAME, PART NUMBER, DATE CODE AND PATENTED.
3. THE PRODUCT IS RoHS COMPLIANT.

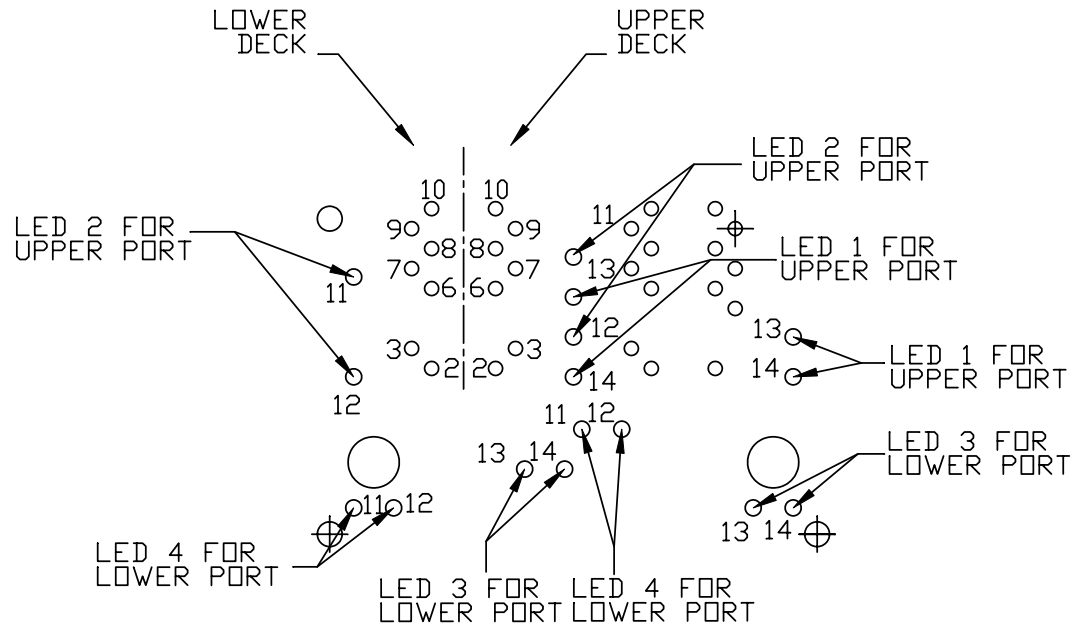
cULus RECOGNIZED - FILE #E196366 AND E169987.
4. THE PRODUCT IS PATENTED, THE PATENT NUMBER ARE U.S. PAT. 5,736,910 AND U.S. PAT. 6,840,817 AND U.S. PAT. 7,123,117.

ORIGINATED BY	DATE	TITLE	PART NO. / DRAWING NO.	STANDARD DIM. TOL. IN INCH	[] METRIC DIM. AS REFERENCE
ANTON LIAO	2012-01-10	2X2 MagJack® WITH UPPER AND LOWER LED (4 Cores) PATENTED	0879-2G2R-M9	.X .XX .XXX	UNIT : INCH [mm] SCALE : N/A REV. : PD SIZE : A4 PAGE : 3
DRAWN BY	DATE		FILE NAME		
HE ZHEN	2012-01-10		0879-2G2R-M9_PD.DWG	±0.010	

THE INFORMATION CONTAINED HEREIN IS CONSIDERED "PROPRIETARY" TO BEL FUSE INC. AND SHALL NOT BE COPIED, REPRODUCED OR DISCLOSED WITHOUT THE WRITTEN APPROVAL OF BEL FUSE INC.

PRELIMINARY

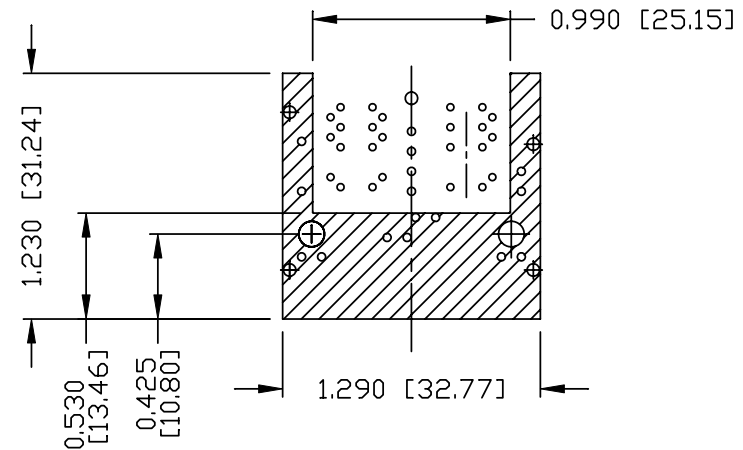
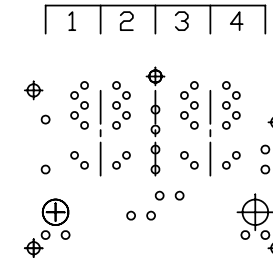
RoHS



PIN-OUT INFORMATION
(COMPONENT SIDE VIEW)

10	CT		
9	RD+		
8	RD-		
7	TD+		
6	TD -		
5	NO PIN		
4	NO PIN	14	GRE (-)
3	NC	13	GRE (+)
2	NC	12	GRE (-)
1	NO PIN	11	GRE (+)

PORT ASSIGNMENT
(COMPONENT SIDE VIEW)



THE SHADED AREA ON THE CUSTOMER BOARD ARE RECOMMENDED TO BE CLEAR OFF ANY VIA HOLE OR COMPONENT PAD.

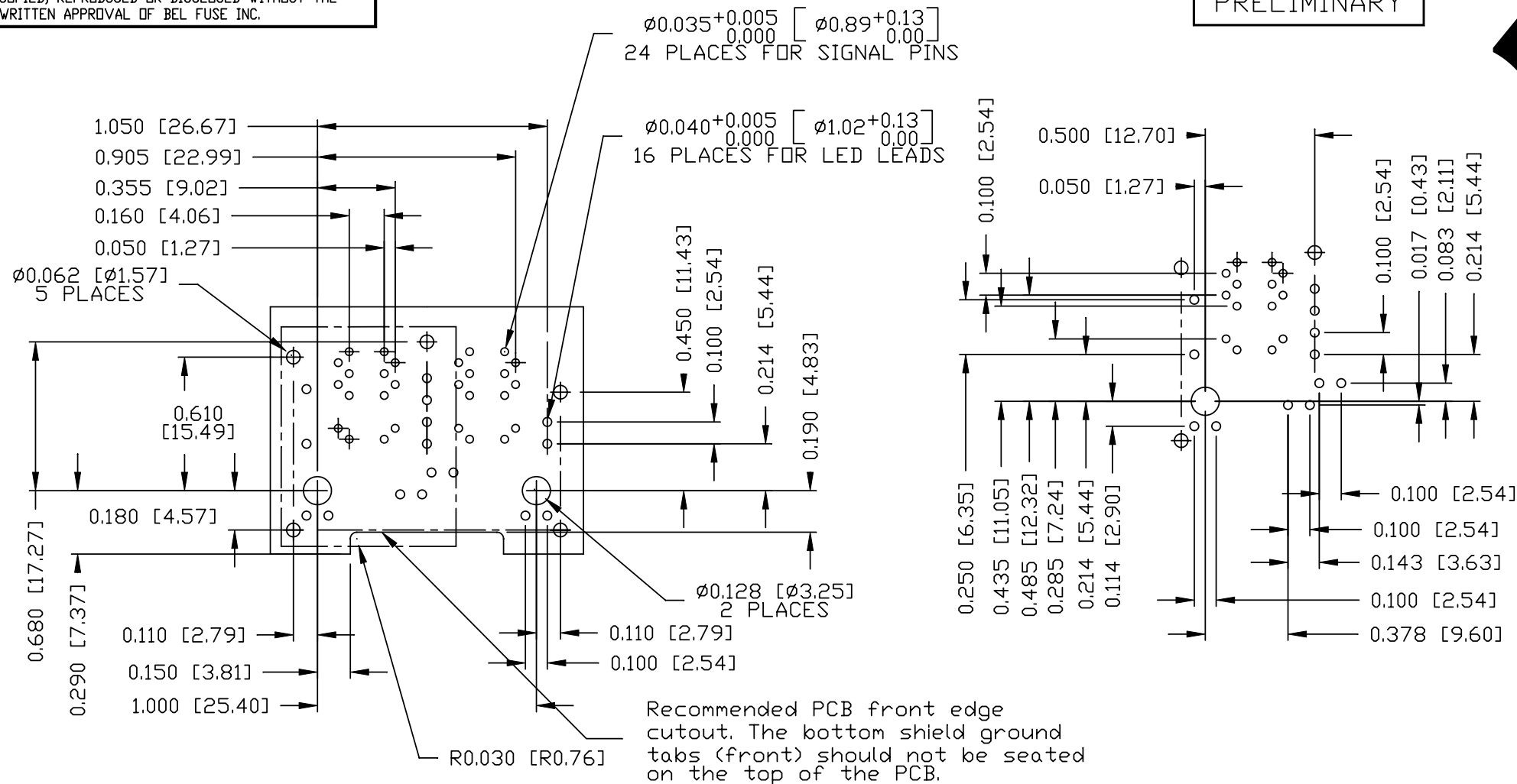
ORIGINATED BY ANTON LIAO	DATE 2012-01-10	TITLE 2X2 MagJack® WITH UPPER AND LOWER LED (4 Cores) PATENTED	PART NO. / DRAWING NO. 0879-2G2R-M9	STANDARD DIM. TOL. IN INCH		[] METRIC DIM. AS REFERENCE	
				.X		UNIT : INCH [mm]	REV. : PD
DRAWN BY HE ZHEN	DATE 2012-01-10		FILE NAME 0879-2G2R-M9_PD.DWG	.XX		SCALE : N/A	SIZE : A4
				.XXX	±0.010		PAGE : 4





THE INFORMATION CONTAINED HEREIN IS CONSIDERED "PROPRIETARY" TO BEL FUSE INC. AND SHALL NOT BE COPIED, REPRODUCED OR DISCLOSED WITHOUT THE WRITTEN APPROVAL OF BEL FUSE INC.

PRELIMINARY

RoHS



SUGGESTED FOOTPRINT
(COMPONENT SIDE VIEW)

ORIGINATED BY	DATE	TITLE 2X2 MagJack® WITH UPPER AND LOWER LED (4 Cores) PATENTED	PART NO. / DRAWING NO.	STANDARD DIM.		[] METRIC DIM. AS REFERENCE		 COMPONENTS ON A CONNECTED PLANET
ANTON LIAO	2012-01-10 <td>0879-2G2R-M9</td> <th colspan="2">TOL. IN INCH</th> <th>UNIT : INCH [mm]</th> <th>REV. : PD</th>		0879-2G2R-M9	TOL. IN INCH		UNIT : INCH [mm]	REV. : PD	
DRAWN BY	DATE		FILE NAME	.X		SCALE : N/A	SIZE : A4	
HE ZHEN	2012-01-10		0879-2G2R-M9_PD.DWG	.XX			PAGE : 5	
				.XXX	±0.004			

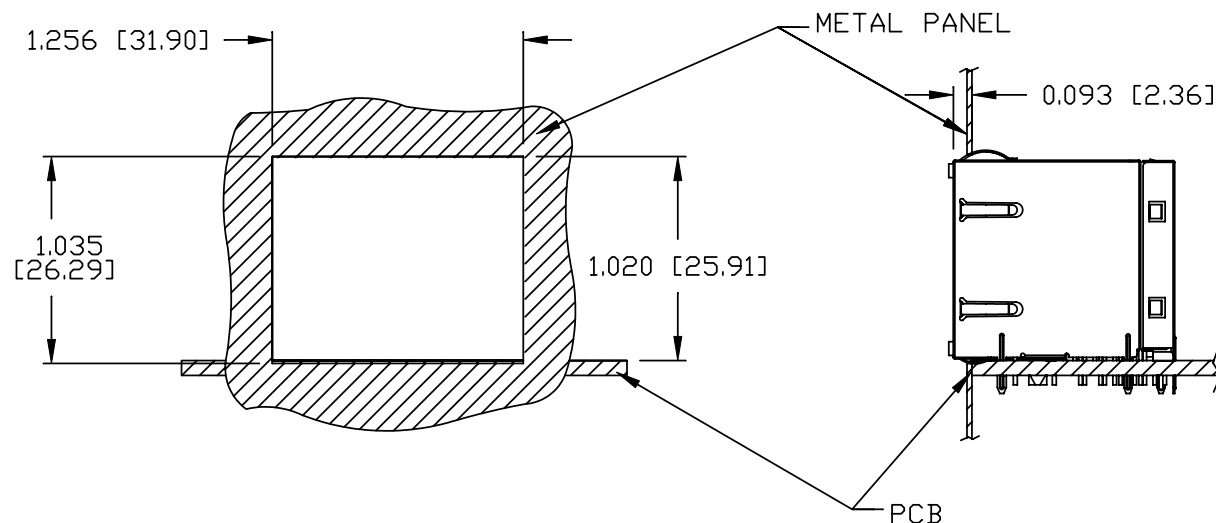
THE INFORMATION CONTAINED HEREIN IS CONSIDERED
"PROPRIETARY" TO BEL FUSE INC. AND SHALL NOT BE
COPIED, REPRODUCED OR DISCLOSED WITHOUT THE
WRITTEN APPROVAL OF BEL FUSE INC.

PRELIMINARY

RoHS



SUGGESTED PANEL OPENING



NOTE:

THE DISTANCE OF PANEL INSIDE SURFACE RELATIVE TO FRONT SURFACE OF PART IS ONLY A SUGGESTION.
IN CASE THIS DISTANCE IS DIFFERENT, THE REQUIRED PANEL OPENING DIMENSIONS CHANGE ACCORDINGLY.

PACKING INFORMATION

PACKING TRAY : 0200-9999-P5 (TOP)
0200-9999-P6 (BOTTOM)

PACKING QUANTITY : 28 PCS FINISHED GOODS PER TRAY
7 TRAYS (196 PCS FINISHED GOODS) PER CARTON BOX

NOTE : CARDBOARDS ARE PLACED BETWEEN LAYERS OF PACKING TRAY INSIDE CARTON BOX
(INCLUDE THE UPPERMOST AND LOWERMOST TRAY)

ORIGINATED BY	DATE	TITLE	PART NO. / DRAWING NO.	STANDARD DIM. TOL. IN INCH	[] METRIC DIM. AS REFERENCE
ANTON LIAO	2012-01-10	2X2 MagJack® WITH UPPER AND LOWER LED	0879-2G2R-M9	.X	UNIT : INCH [mm] REV. : PD
DRAWN BY	DATE	(4 Cores)	FILE NAME	.XX	SCALE : N/A SIZE : A4
HE ZHEN	2012-01-10	PATENTED	0879-2G2R-M9_PD.DWG	.XXX ±0.004	PAGE : 6

