

THE INFORMATION CONTAINED HEREIN IS CONSIDERED
"PROPRIETARY" TO BEL FUSE INC. AND SHALL NOT BE
COPIED, REPRODUCED OR DISCLOSED WITHOUT THE
WRITTEN APPROVAL OF BEL FUSE INC.



ELECTRICAL CHARACTERISTICS @ 25°C

URNS RATIO

| | |
|-----|---------------|
| TP1 | 1CT : 1CT ±2% |
| TP2 | 1CT : 1CT ±2% |
| TP3 | 1CT : 1CT ±2% |
| TP4 | 1CT : 1CT ±2% |

OCL @ 100kHz/100mVRMS

8mA DC BIAS 350µH MIN.

INS. LOSS

| | |
|------------------|-------------|
| 0.1MHz TO 1MHz | -1.1 dB MAX |
| 1MHz TO 65MHz | -0.5 dB MAX |
| 65MHz TO 100MHz | -0.8 dB MAX |
| 100MHz TO 125MHz | -1.2 dB MAX |

RET. LOSS (MIN)

| | |
|--------------|-----------------------|
| 0.5MHz-40MHz | -18 dB |
| 40MHz-100MHz | -12+20LOG(f/80MHz) dB |

CM TO CM REJ

100kHz - 100MHz -30 dB MIN

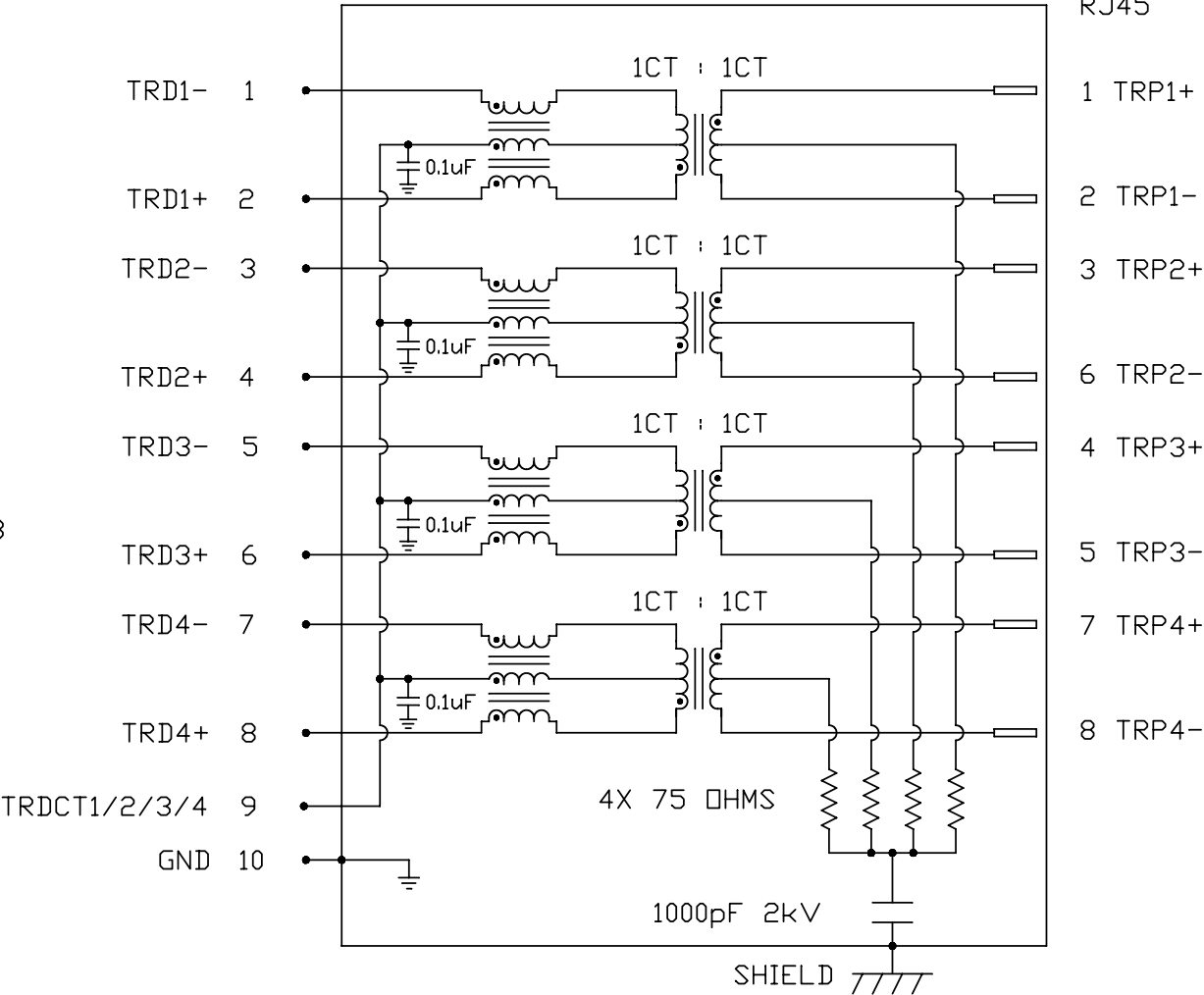
CM TO DM REJ

100kHz - 100MHz -35 dB MIN

HIPOT (Isolation Voltage): 1500 Vrms

100% OF PRODUCTION TESTED TO COMPLY WITH
IEEE 802.3 ISOLATION REQUIREMENTS.

SCHEMATIC



RJ45

1 TRP1+

2 TRP1-

3 TRP2+

6 TRP2-

4 TRP3+

5 TRP3-

7 TRP4+

8 TRP4-

| | |
|----------------|----------|
| ORIGINATED BY | DATE |
| CHOW WANGCHUNG | 08-31-10 |
| DRAWN BY | DATE |
| LEE WEIDE | 08-31-10 |

| |
|----------------------|
| TITLE |
| 2X2 gigabit MagJack® |
| 0833-2X2R-54-F |
| PATENTED |

| |
|------------------------|
| PART NO. / DRAWING NO. |
| 08332X2R54-F |
| FILE NAME |
| 08332X2R54-F_C.DWG |

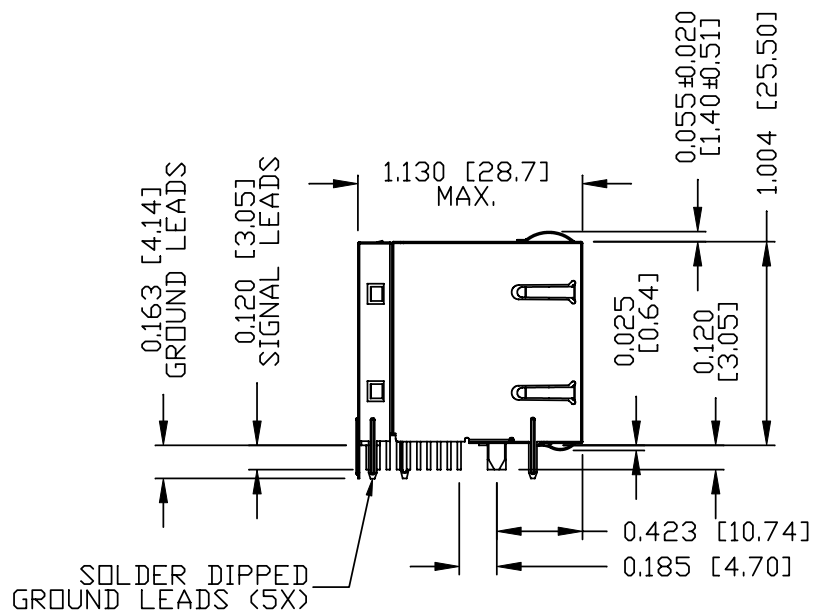
| |
|---------------|
| STANDARD DIM. |
| TOL. IN INCH |
| .X |
| .XX |
| .XXX |

| |
|------------------------------|
| [] METRIC DIM. AS REFERENCE |
| UNIT : INCH [mm] |
| SCALE : N/A |
| REV. : C |
| SIZE : A4 |
| PAGE : 2 |



THE INFORMATION CONTAINED HEREIN IS CONSIDERED
"PROPRIETARY" TO BEL FUSE INC. AND SHALL NOT BE
COPIED, REPRODUCED OR DISCLOSED WITHOUT THE
WRITTEN APPROVAL OF BEL FUSE INC.

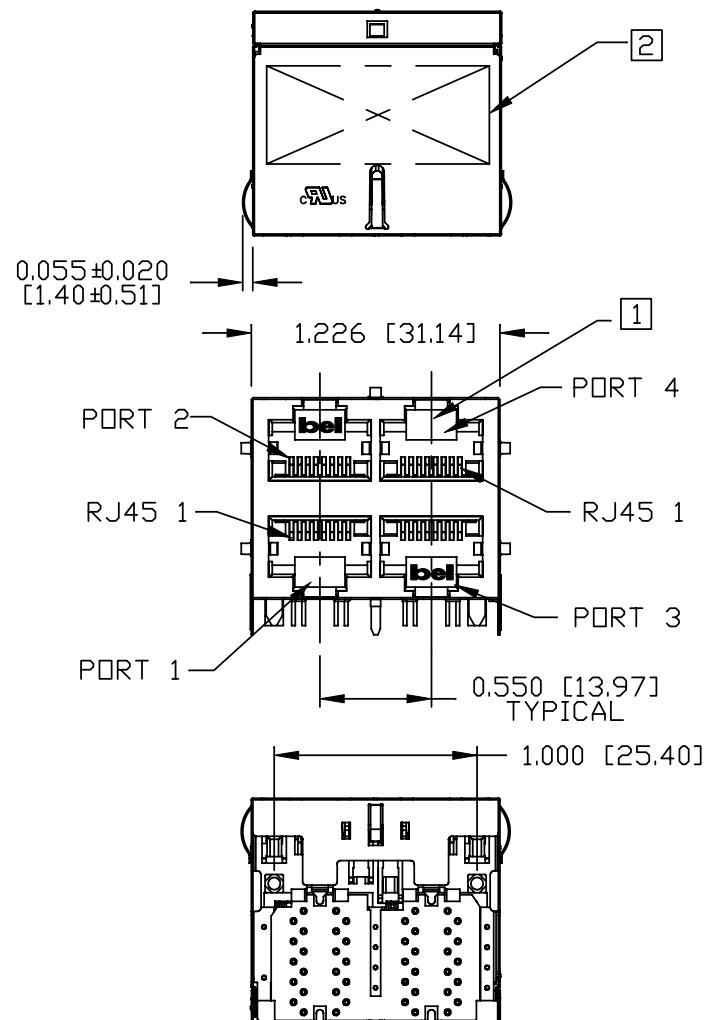
RoHS
2002/95/EC



NOTES:

PLASTIC HOUSING: THERMOPLASTIC PBT
FLAMMABILITY RATING UL 94V-0
CONTACT PLATING: 50 MICRO-INCH HARD GOLD PLATING
OUTPUT PINS: TIN-COATED COPPER WIRE, DIA 0.018 INCH.
METAL SHIELD: NICKEL PLATED ON COPPER ALLOY.
(ALL GROUND LEADS ARE SOLDER DIPPED)

- [1] JACK CAVITY CONFORMS TO FCC RULES AND REGULATIONS, PART 68 SUBPART F.
- [2] MARK PART WITH MFG LOGO, MFG NAME, PART NUMBER, DATE CODE AND PATENTED.
3. RoHS COMPLIANCE, PER EU DIRECTIVE 2002/95/EC.



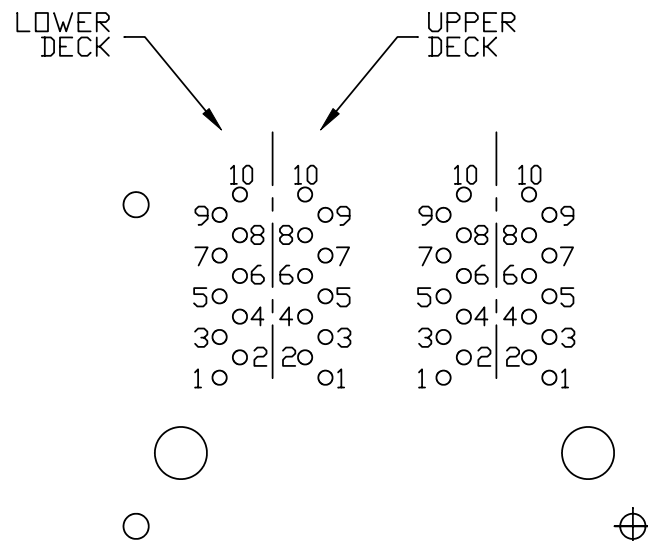
cULusUL RECOGNIZED - FILE #E196366 AND E169987.

4. THE PRODUCT IS PATENTED, THE PATENT NUMBER ARE
U.S. PAT. 5,736,910 AND U.S. PAT. 6,840,817
AND U.S. PAT. 7,123,117.

| ORIGINATED BY | DATE | TITLE | PART NO. / DRAWING NO. | STANDARD DIM. TOL. IN INCH | [] METRIC DIM. AS REFERENCE | |
|---------------|----------|--|------------------------|-------------------------------|------------------------------|-----------|
| CHEN BILL | 08-31-10 | 2X2 gigabit MagJack® 0833-2X2R-54-F PATENTED | 08332X2R54-F | | UNIT : INCH [mm] | REV. : C |
| DRAWN BY | DATE | | FILE NAME | .X | SCALE : N/A | SIZE : A4 |
| XIAN JIAXIN | 08-31-10 | | 08332X2R54-F_C.DWG | .XX .XXX | | PAGE : 3 |

bel
COMPONENTS FOR A
CONNECTED
PLANET

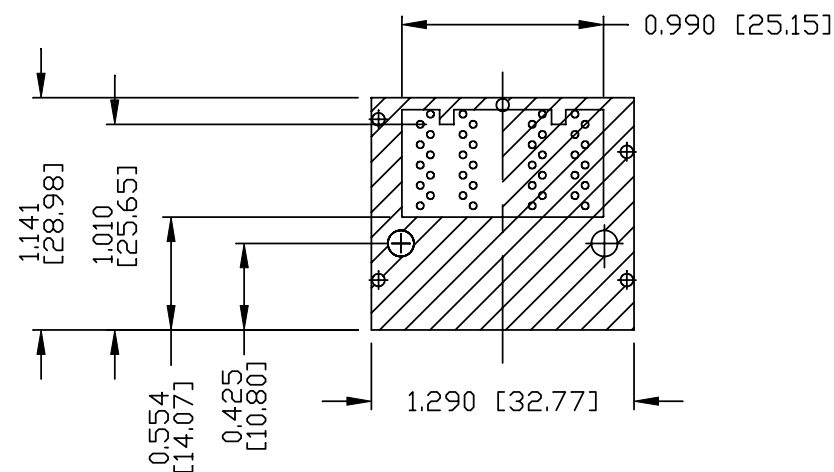
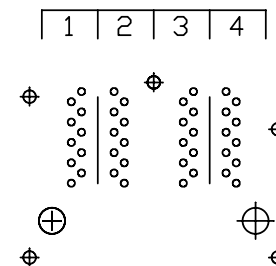
THE INFORMATION CONTAINED HEREIN IS CONSIDERED
"PROPRIETARY" TO BEL FUSE INC. AND SHALL NOT BE
COPIED, REPRODUCED OR DISCLOSED WITHOUT THE
WRITTEN APPROVAL OF BEL FUSE INC.





PIN-OUT INFORMATION
(COMPONENT SIDE VIEW)

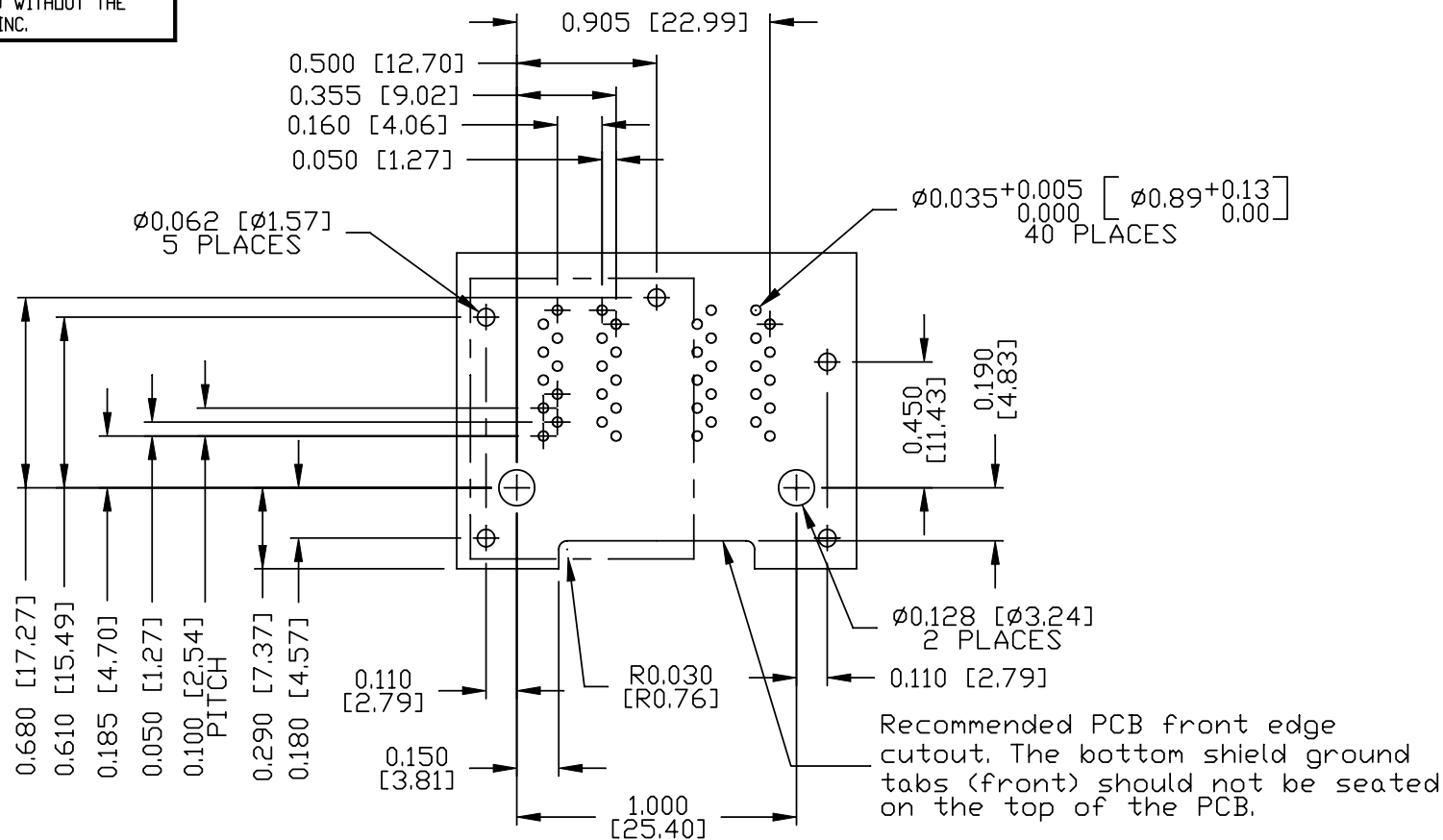
| | |
|----|--------------|
| 10 | GND |
| 9 | TRDCT1/2/3/4 |
| 8 | TRD 4+ |
| 7 | TRD 4- |
| 6 | TRD 3+ |
| 5 | TRD 3- |
| 4 | TRD 2+ |
| 3 | TRD 2- |
| 2 | TRD 1+ |
| 1 | TRD 1- |

PORT ASSIGNMENT
(COMPONENT SIDE VIEW)



THE SHADED AREA ON THE CUSTOMER BOARD ARE
RECOMMENDED TO BE CLEAR OFF ANY VIA HOLE OR
COMPONENT PAD.

| | | | | | | | | |
|---------------|----------|---|--|-------------------------------|--------|---|-----------|---|
| ORIGINATED BY | DATE | TITLE 2X2 gigabit MagJack® 0833-2X2R-54-F PATENTED | PART NO. / DRAWING NO. 08332X2R54-F | STANDARD DIM. TOL. IN INCH | | [] METRIC DIM. AS REFERENCE | |  |
| CHEN BILL | 08-31-10 | | FILE NAME 08332X2R54-F_C.DWG | .X | | UNIT : INCH [mm] | REV. : C | |
| DRAWN BY | DATE | | | .XX | | SCALE : N/A | SIZE : A4 | |
| XIAN JIAXIN | 08-31-10 | | | .XXX | ±0.004 |  | PAGE : 4 | |

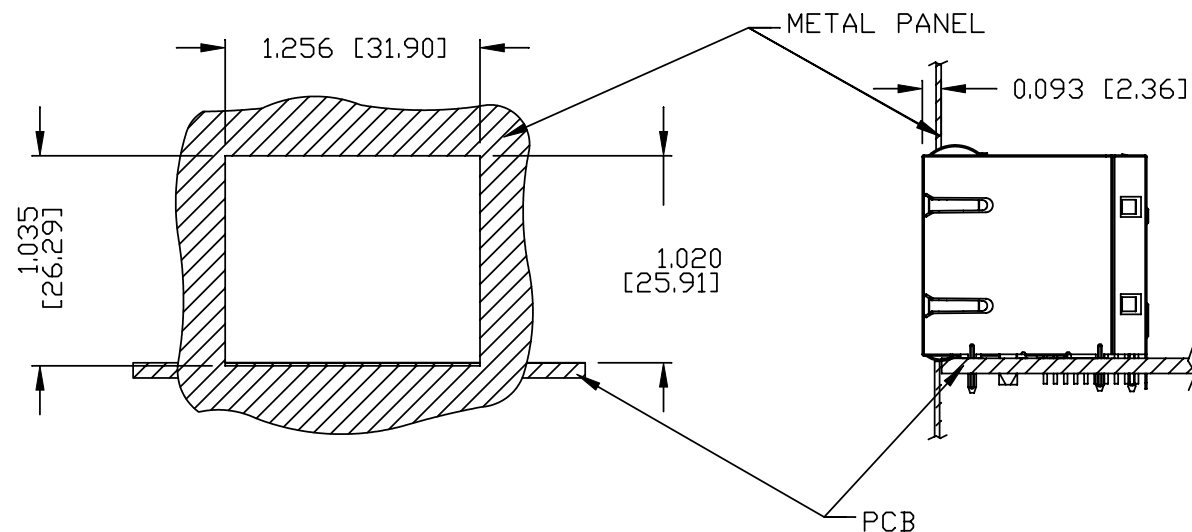


SUGGESTED FOOTPRINT
(COMPONENT SIDE VIEW)

| ORIGINATED BY | DATE | TITLE | PART NO. / DRAWING NO. | STANDARD DIM. TOL. IN INCH | [] METRIC DIM. AS REFERENCE | |
|---------------|----------|----------------------|------------------------|-------------------------------|------------------------------|-----------|
| CHEN BILL | 08-31-10 | 2X2 gigabit MagJack® | 08332X2R54-F | | UNIT : INCH [mm] | REV. : C |
| DRAWN BY | DATE | 0833-2X2R-54-F | FILE NAME | .X | SCALE : N/A | SIZE : A4 |
| XIAN JIAXIN | 08-31-10 | PATENTED | 08332X2R54-F_C.DWG | .XX | | PAGE : 5 |
| | | | | .XXX | ± 0.004 | |



SUGGESTED PANEL OPENING



NOTE:

THE DISTANCE OF PANEL INSIDE SURFACE RELATIVE TO FRONT SURFACE OF PART IS ONLY A SUGGESTION.
IN CASE THIS DISTANCE IS DIFFERENT, THE REQUIRED PANEL OPENING DIMENSIONS CHANGE ACCORDINGLY.

PACKING INFORMATION

PACKING TRAY : 0200-9999-P5 (TOP)
0200-9999-P6 (BOTTOM)

PACKING QUANTITY : 28 PCS FINISHED GOODS PER TRAY
7 TRAYS (196 PCS FINISHED GOODS) PER CARTON BOX

NOTE : CARDBOARDS ARE PLACED BETWEEN LAYERS OF PACKING TRAY INSIDE CARTON BOX
(INCLUDE THE UPPERMOST AND LOWERMOST TRAY)

| ORIGINATED BY | DATE | TITLE | PART NO. / DRAWING NO. | STANDARD DIM. TOL. IN INCH | [] METRIC DIM. AS REFERENCE |
|---------------|----------|--|---|-------------------------------|------------------------------|
| CHEN BILL | 08-31-10 | 2X2 gigabit MagJack® 0833-2X2R-54-F PATENTED | 08332X2R54-F FILE NAME 08332X2R54-F_C.DWG | .X | UNIT : INCH [mm] REV. : C |
| DRAWN BY | DATE | | | .XX | SCALE : N/A SIZE : A4 |
| XIAN JIAXIN | 08-31-10 | | | .XXX ±0.004 | PAGE : 6 |