

THE INFORMATION CONTAINED HEREIN IS CONSIDERED "PROPRIETARY" TO BEL FUSE INC. AND SHALL NOT BE COPIED, REPRODUCED OR DISCLOSED WITHOUT THE WRITTEN APPROVAL OF BEL FUSE INC.

LED 2 & 4 POLARITY	LED 1 & 3 POLARITY	PIN 11	PIN 12	COLOR	PIN 13	PIN 14	COLOR
-	+	ORANGE	-	+	ORANGE		
+	-	GREEN	+	-	GREEN		

ELECTRICAL CHARACTERISTICS @ 25°C

TURNS RATIO

TP1 1CT : 1CT ±2%
 TP2 1CT : 1CT ±2%
 TP3 1CT : 1CT ±2%
 TP4 1CT : 1CT ±2%

DCL @ 100kHz/100mVRMS

(-40°C - 85°C)

RET. LOSS (MIN) 180µH MIN.

1MHz-40MHz -18 dB MIN

40MHz-250MHz -18+10LOG10(f/40MHz) dB MIN

CM TO CM REJ

100kHz - 100MHz -30 dB MIN

CM TO DM REJ

100kHz - 100MHz -35 dB MIN

HIPOT (Isolation Voltage): 2250 VDC

100% OF PRODUCTION TESTED TO COMPLY WITH IEEE 802.3 ISOLATION REQUIREMENTS.

NOTE: PORT-TO-PORT ISOLATION NOT INCLUDED.

LEDS 1, 2, 3 AND 4

VF (FORWARD VOLTAGE) IF=20mA ORANGE 2.0V TYP.
 GREEN 2.2V TYP.

AD (DOMINANT WAVELENGTH) IF=20mA ORANGE 605nm TYP.
 GREEN 570nm TYP.

OPERATING TEMPERATURE: -40°C TO +85°C.

PRELIMINARY

RoHS



LED 2 & 4 ORANGE GREEN PIN 11 TRD1- 1 LED 1 & 3 ORANGE GREEN PIN 13 TRD1+ 2

TRD2- 3 TRD2+ 4 TRD3- 5 TRD3+ 6 TRD4- 7 TRD4+ 8

TRDCT1/2/3/4 9 GND 10

RJ45

1 TRP1+

2 TRP1-

3 TRP2+

6 TRP2-

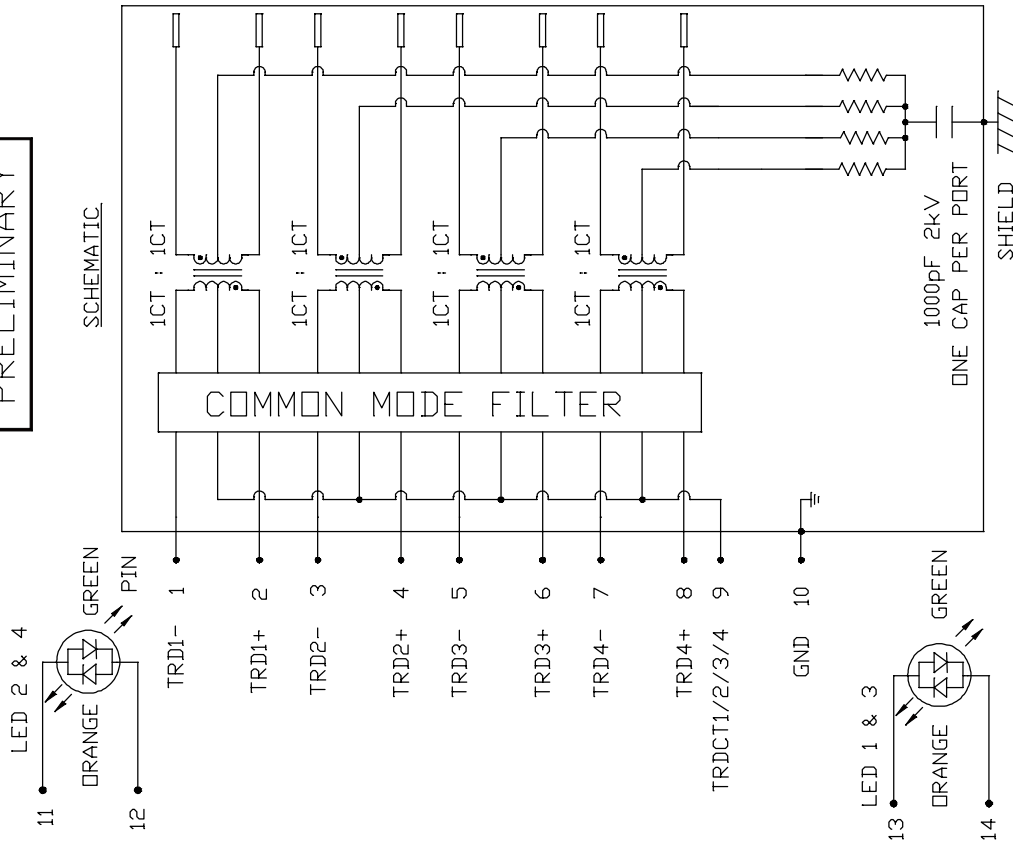
4 TRP3+

5 TRP3-

7 TRP4+

8 TRP4-

4X 75 OHMS



ORIGINATED BY
 CHOW WANCHUNG
DATE 2021-03-19
DRAWN BY
 XIE YIMING
DATE 2021-03-19

TITLE
 2X2 5 gigabit MagJack®
 WITH UPPER AND LOWER LED
 (8 Cores, Extended Temp.)
 PATENTED

PART NO. / DRAWING NO.
 0879-2B2J-JY

FILE NAME
 0879-2B2J-JY_2.DWG

STANDARD DIM. TOL. IN INCH	[] METRIC DIM. AS REF.
.X	UNIT : INCH [mm]
.XX	SCALE : N/A
.XXX	SIZE : A4

REV. : 2 PAGE : 2



MAGNETIC SOLUTIONS

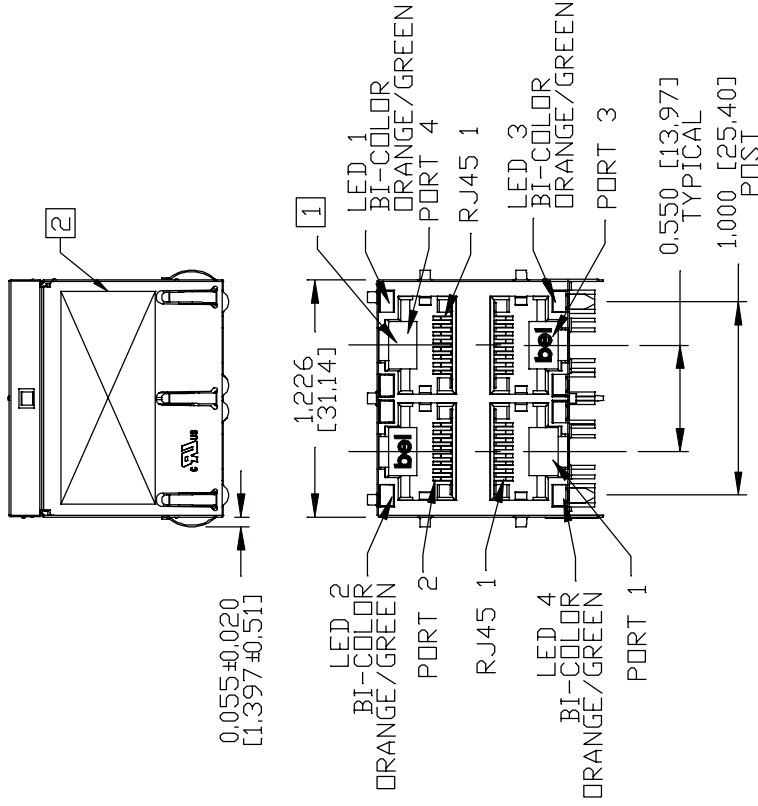
a bel group

This document is electronically generated. This is a controlled copy if used internally

DC002(2)120214

THE INFORMATION CONTAINED HEREIN IS CONSIDERED "PROPRIETARY" TO BEL FUSE INC. AND SHALL NOT BE COPIED, REPRODUCED OR DISCLOSED WITHOUT THE WRITTEN APPROVAL OF BEL FUSE INC.

PRELIMINARY



NOTES:

1. JACK CAVITY CONFORMS TO FCC RULES AND REGULATIONS, PART 68 SUBPART F.
 2. MARK PART WITH MFG LOGO, MFG NAME, PART NUMBER, DATE CODE AND PATENTED.
- PLASTIC HOUSING: THERMOPLASTIC PBT, BLACK
 FLAMMABILITY RATING UL 94V-0
 CONTACT PLATING: 50 MICRO-INCH HARD GOLD PLATING OR EQUIVALENT.
 OUTPUT PINS: TIN-COATED COPPER WIRE, DIA 0.018 INCH.
 100 MICRO-INCH MIN MATTE TIN. PINS ARE SOLDER DIPPED.
 METAL SHIELD: NICKEL PLATED ON COPPER ALLOY.
 <ALL GROUND LEADS ARE SOLDER DIPPED>
 <ALL GROUND LEADS ARE SOLDER DIPPED>
 <ALL GROUND LEADS ARE SOLDER DIPPED>

3. THE PRODUCT IS RoHS COMPLIANT.
4. THE PRODUCT IS PATENTED. THE PATENT NUMBER ARE U.S. PAT. 6,840,817 AND U.S. PAT. 7,123,117.
5. THE PART IS RECOMMENDED FOR WAVE SOLDERING. THE SUGGESTED PEAK WAVE SOLDERING CONDITION IS 260°C MAX AND 10 SECONDS MAX.

ORIGINATED BY
ANTON LIAO
DATE 2021-03-19
DRAWN BY
LI QUANKUN
DATE 2021-03-19

TITLE
2X2 5 gigabit MagJack®
WITH UPPER AND LOWER LED
(8 Cores, Extended Temp.)
PATENTED

PART NO. / DRAWING NO.
0879-2B2J-JY
FILE NAME
0879-2B2J-JY_2.DWG

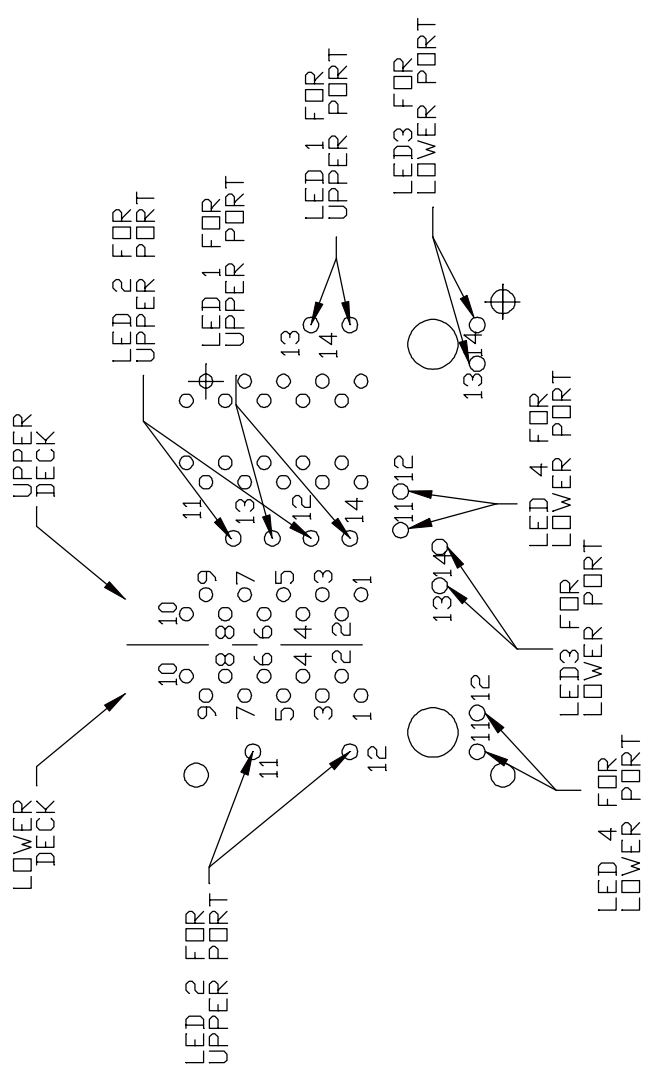
STANDARD DIM.	[] METRIC DIM.
TOL. IN INCH	AS REF.
.X	UNIT : INCH [mm]
.XX	SCALE : N/A
.XXX	SIZE : A4

REV. : 2 PAGE : 3



THE INFORMATION CONTAINED HEREIN IS CONSIDERED "PROPRIETARY" TO BEL FUSE INC. AND SHALL NOT BE COPIED, REPRODUCED OR DISCLOSED WITHOUT THE WRITTEN APPROVAL OF BEL FUSE INC.

PRELIMINARY



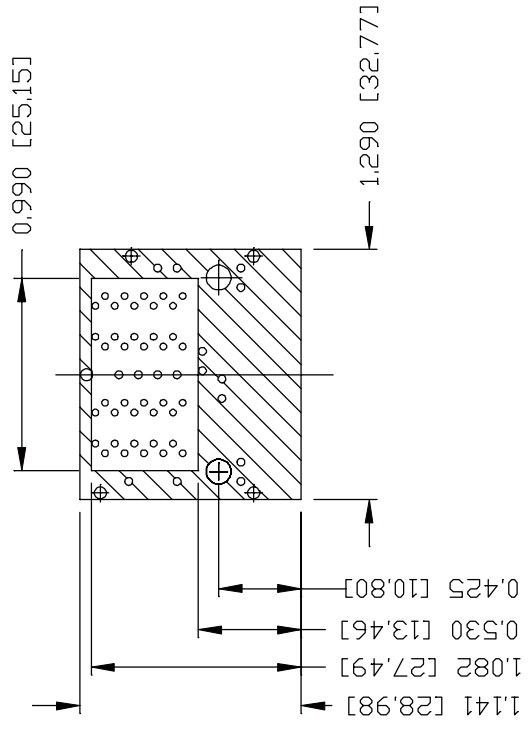
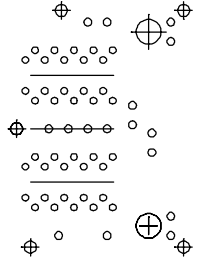
PIN-OUT INFORMATION

(COMPONENT SIDE VIEW2)


10	GND
9	TRCT1/2/3/4
8	TRD 4+
7	TRD 4-
6	TRD 3+
5	TRD 3-
4	TRD 2+
3	TRD 2-
2	TRD 1+
1	TRD 1-
14	ORANGE (+)/GREEN (-)
13	ORANGE (-)/GREEN (+)
12	ORANGE (+)/GREEN (-)
11	ORANGE (-)/GREEN (+)

PORT ASSIGNMENT
(COMPONENT SIDE VIEW2)

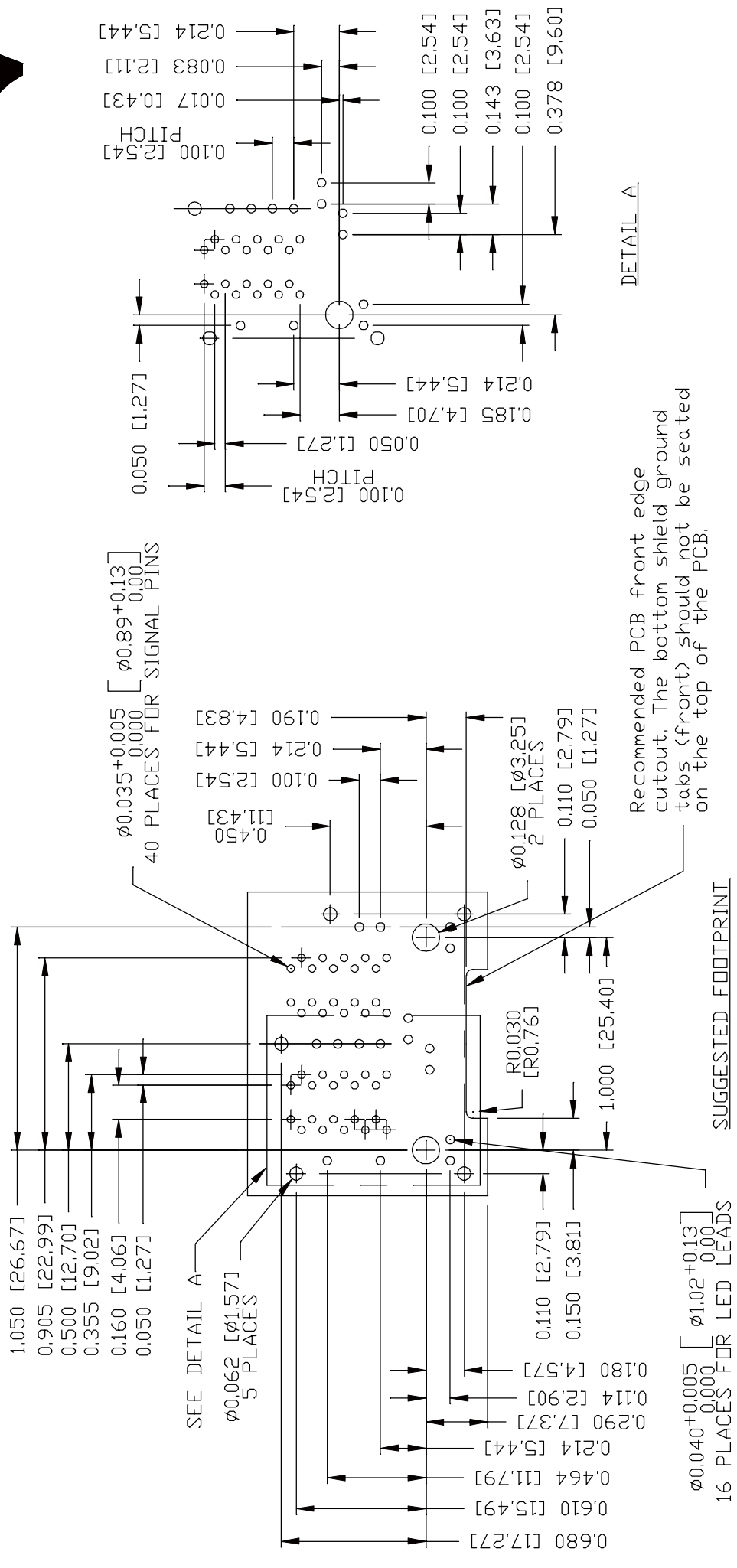
1 | 2 | 3 | 4



THE SHADED AREA ON THE CUSTOMER BOARD ARE RECOMMENDED TO BE CLEAR OFF ANY VIA HOLE OR COMPONENT PAD.

REV. : 2	PAGE : 4
STANDARD DIM. TOL. IN INCH	[] METRIC DIM. AS REF.
.X	UNIT : INCH [mm]
.XX	SCALE : N/A
.XXX	SIZE : A4
FILE NAME	0879-2B2J-JY
PART NO. / DRAWING NO.	0879-2B2J-JY
TITLE	2X2 5 gigabit MagJack® WITH UPPER AND LOWER LED (8 Cores, Extended Temp.)
ORIGINATED BY	ANTON LIAO
DATE	2021-03-19
DRAWN BY	LI QUANKUN
DATE	2021-03-19
 MAGNETIC SOLUTIONS a bel group	

THE INFORMATION CONTAINED HEREIN IS CONSIDERED "PROPRIETARY" TO BEL FUSE INC. AND SHALL NOT BE COPIED, REPRODUCED OR DISCLOSED WITHOUT THE WRITTEN APPROVAL OF BEL FUSE INC.



DETAIL A

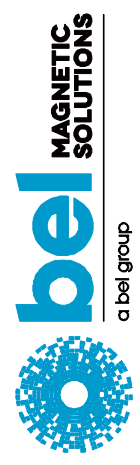
Recommended PCB front edge cutout. The bottom shield ground tabs (front) should not be seated on the top of the PCB.

SUGGESTED FOOTPRINT
(COMPONENT SIDE VIEW)

REV. :	2	PAGE :	5
ORIGINATED BY	ANTON LIAO	TITLE	2X2 5 gigabit MagJack® WITH UPPER AND LOWER LED (8 Cores, Extended Temp.) PATENTED
DATE	2021-03-19	PART NO. / DRAWING NO.	0879-2B2J-JY
DRAWN BY	LI QUANKUN	FILE NAME	0879-2B2J-JY_2.DWG
DATE	2021-03-19	STANDARD DIM. TOL. IN INCH	[] METRIC DIM. AS REF.
		.X	UNIT : INCH [mm]
		.XX	SCALE : N/A
		.XXX	SIZE : A4

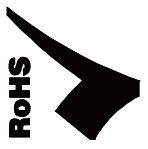
This document is electronically generated. This is a controlled copy if used internally

DC002(2)120214

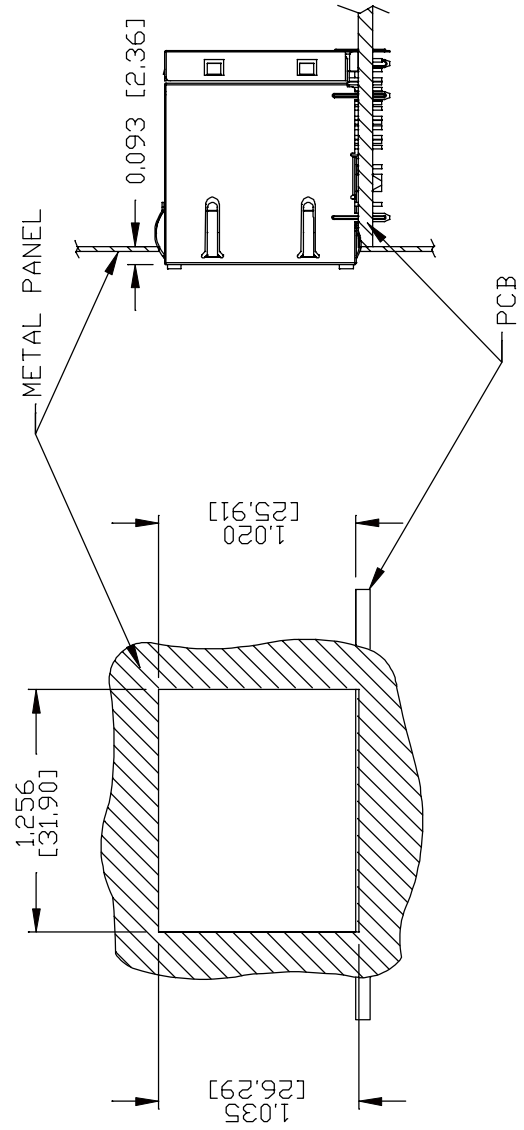


THE INFORMATION CONTAINED HEREIN IS CONSIDERED "PROPRIETARY" TO BEL FUSE INC. AND SHALL NOT BE COPIED, REPRODUCED OR DISCLOSED WITHOUT THE WRITTEN APPROVAL OF BEL FUSE INC.

PRELIMINARY



SUGGESTED PANEL OPENING



NOTE:

THE DISTANCE OF PANEL INSIDE SURFACE RELATIVE TO FRONT SURFACE OF PART IS ONLY A SUGGESTION, IN CASE THIS DISTANCE IS DIFFERENT, THE REQUIRED PANEL OPENING DIMENSIONS CHANGE ACCORDINGLY.

PACKING INFORMATION

PACKING TRAY : 0200-9999-P5 (TOP)
0200-9999-P6 (BOTTOM)

PACKING QUANTITY : 28 PCS FINISHED GOODS PER TRAY
7 TRAYS (196 PCS FINISHED GOODS) PER CARTON BOX

NOTE : CARDBOARDS ARE PLACED BETWEEN LAYERS OF PACKING TRAY INSIDE CARTON BOX (INCLUDE THE UPPERMOST AND LOWERMOST TRAY)

REV. : 2		PAGE : 6	
ORIGINATED BY ANTON LIAD DATE 2021-03-19 DRAWN BY LI QUANKUN DATE 2021-03-19		TITLE 2X2 5 gigabit MagJack® WITH UPPER AND LOWER LED (8 Cores, Extended Temp.) PATENTED	
PART NO. / DRAWING NO. 0879-2B2J-JY FILE NAME 0879-2B2J-JY_2.DWG		STANDARD DIM. TOL. IN INCH .X .XX .XXX	
UNIT : INCH [mm] SCALE : N/A SIZE : A4		[] METRIC DIM. AS REF. .0005 .XXX	

