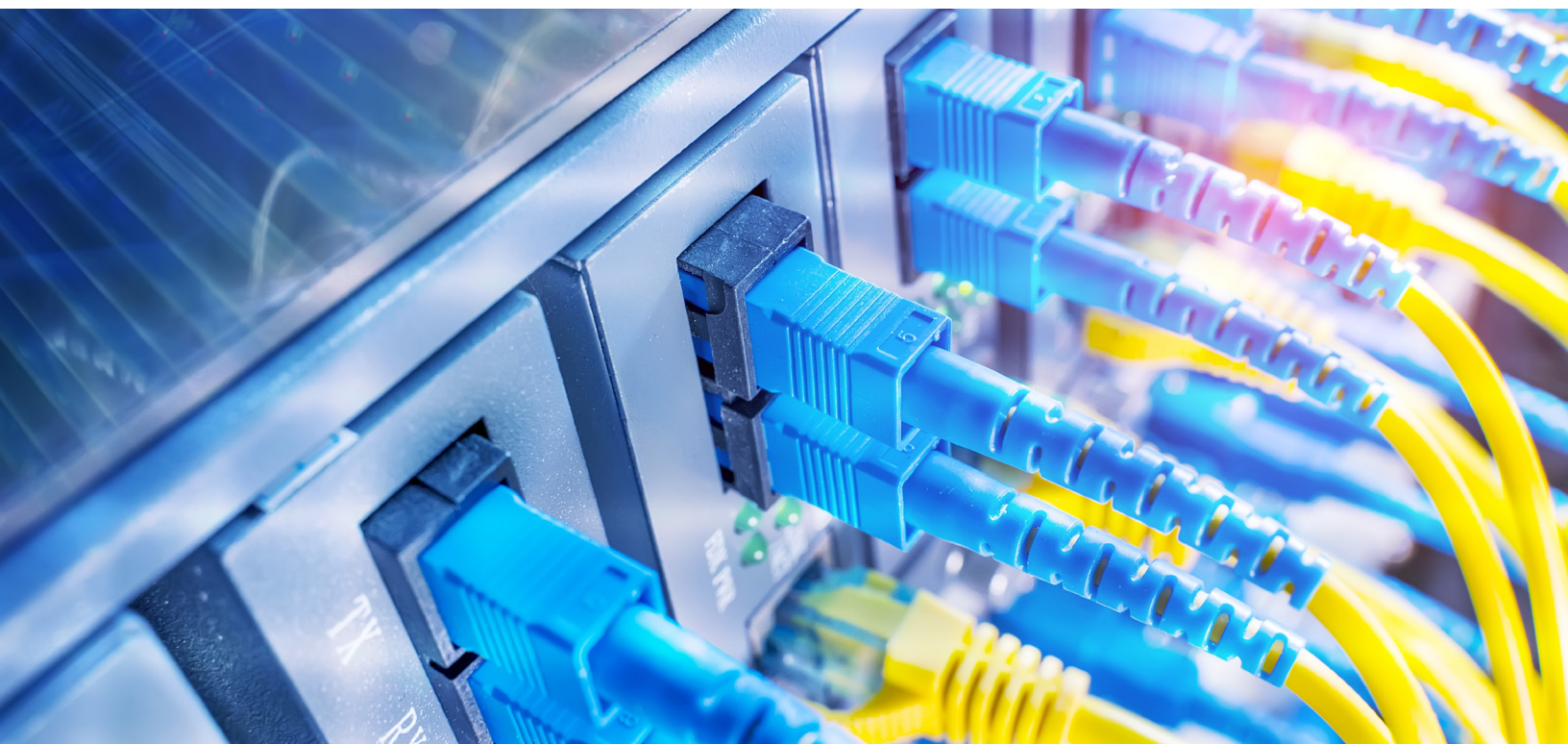




ICM Ethernet Product Selection Guide for VITESSE® – Mass Market PHYs



MagJack® ICM's

The MagJack® ICM brand encompasses a comprehensive portfolio of integrated devices that combine connectors and magnetics to provide the signal conditioning, EMI suppression and signal isolation previously performed by multiple (7+), discrete components. Each MagJack® ICM employed reduces PCB real estate use by more than 50% per RJ port.



10/100/1000 Single Port PHYs

IC Part No.	Bel /TRP Part No.	No. Ports	Port Config.	LEDs	Port Orientation	Profile	Application	Operating Temperature
VSC7301	0826-1X1T-43-F	1	1x1	Yes	Tab Up	Standard	10/100/1000	0 to 70°C
VSC7303	0826-1X1T-32-F	1	1x1	Yes	Tab Up	Standard	10/100/1000	-40 to 85°C
VSC7380	0826-1X1T-GH-F	1	1x1	Yes	Tab Up	Standard	10/100/1000 PoE+	-40 to 85°C
VSC7384	V890-1AX1-A1	1	1x1	Yes	Vertical	Standard	10/100/1000	0 to 70°C
VSC7385	V891-1XX1-A1	1	1x1	No	Vertical	Standard	10/100/1000	0 to 70°C
VSC7389	L829-1J1T-43	1	1x1	Yes	Tab Up	Low Profile	10/100/1000	0 to 70°C
VSC7390	L834-1C1T-S7	1	1x1	Yes	Tab Down	Low Profile	10/100/1000	0 to 70°C
VSC7391	L835-1X1T-43	1	1x1	No	Tab Down	Low Profile	10/100/1000	0 to 70°C
VSC7398	L830-1J1T-43	1	1x1	Yes	Tab Down	Low Profile	10/100/1000	0 to 70°C
VSC8201	SI-61001-F	1	1x1	Yes	Tab Down	Standard	10/100/1000	0 to 70°C
VSC8204	SI-61025-F	1	1x1	Yes	Tab Down	Standard	10/100/1000	-40 to 85°C
VSC8211	1840417-1	1	1x1	Yes	Vertical	Standard	10/100/1000	0 to 70°C
VSC8221	2250015-1	1	1x1	Yes	Tab Up	Standard	10/100/1000	-40 to 85°C
VSC8224	2250022-1	1	1x1	Yes	Tab Down	Standard	10/100/1000	0 to 70°C
VSC8244	0821-1X1T-43-F	1	1x1	Yes	Tab Up	Standard	10/100/1000 + 1USBA	0 to 70°C
VSC8538	1840029-1	1	1x1	Yes	Tab Up	Standard	10/100/1000 + 2USBA	0 to 70°C

10/100/1000 Multi Port PHYs

IC Part No.	Bel /TRP Part No.	No. Ports	Port Config.	LEDs	Port Orientation	Profile	Application	Operating Temperature
VSC7301	0826-1X2T-43-F	2	1x2	Yes	Tab Up	Standard	10/100/1000	0 to 70°C
	0826-1X2T-32-F	2	1x2	Yes	Tab Up	Standard	10/100/1000	-40 to 85°C
	0826-1X2T-GH-F	2	1x2	Yes	Tab Up	Standard	10/100/1000 PoE+	-40 to 85°C
VSC7303	L886-1G2T-BF	2	1x2	Yes	Tab Up	Low Profile	10/100/1000	0 to 70°C
VSC7380	1840638-1	2	1x2	Yes	Tab Up	Low Profile	10/100/1000	-40 to 85°C
VSC7384	1840855-4	2	2x1	Yes	Stacked	Standard	10/100/1000	0 to 70°C
VSC7385	0879-2C1R-V4	2	2x1	Yes	Stacked	Standard	10/100/1000	0 to 70°C
VSC7389	0845-2R1T-E4	2	2x1	Yes	Stacked	Standard	10/100/1000	0 to 70°C
VSC7390	0826-1X4T-43-F	4	1x4	Yes	Tab Up	Standard	10/100/1000	0 to 70°C
VSC7391	0826-1X4T-GH-F	4	1x4	Yes	Tab Up	Standard	10/100/1000 PoE+	-40 to 85°C
VSC7398	1840576-1	4	1x4	Yes	Tab Down	Standard	10/100/1000 PoE+	0 to 70°C
VSC8204	0879-2C2R-54	4	2x2	Yes	Stacked	Standard	10/100/1000	0 to 70°C
VSC8211	1840868-1	4	2x2	Yes	Stacked	Standard	10/100/1000	0 to 70°C
VSC8224	0879-2C4R-54	8	2x4	Yes	Stacked	Standard	10/100/1000	0 to 70°C
VSC8244	0895-2C4R-GK	8	2x4	Yes	Stacked	Standard	10/100/1000 PoE+	-40 to 85°C
VSC8538	1840660-1	8	2x4	Yes	Stacked	Standard	10/100/1000 PoE+	0 to 70°C
VSC8558	0879-2C6R-54	12	2x6	Yes	Stacked	Standard	10/100/1000	0 to 70°C
	0895-2C6R-GK	12	2x6	Yes	Stacked	Standard	10/100/1000 PoE+	-40 to 85°C
	1-1840055-4	12	2x6	Yes	Stacked	Standard	10/100/1000	0 to 70°C
	1840949-1	12	2x6	Yes	Stacked	Standard	10/100/1000 PoE+	0 to 70°C
	0879-2C8R-54	16	2x8	Yes	Stacked	Standard	10/100/1000	0 to 70°C
	0895-2C8R-GK	16	2x8	Yes	Stacked	Standard	10/100/1000 PoE+	-40 to 85°C

2.5G PHYs

IC Part No.	Bel /TRP Part No.	No. Ports	Port Config.	LEDs	Port Orientation	Profile	Application	Operating Temperature
VSC8222 VSC8223	L836-121T-KD	1	1x1	Yes	Tab Down	Low Profile	2.5G	0 to 70°C
	L829-1J1T-JM	1	1x1	Yes	Tab Up	Low Profile	2.5G	0 to 70°C
	L8BJ-1K1T-KDE	1	1x1	Yes	Tab Down	Low Profile	2.5G	0 to 70°C
	0826-1X1T-HT-F	1	1x1	Yes	Tab Up	Standard	2.5G PoE+	-40 to 85°C
	0826-1X4T-HT-F	4	1x4	Yes	Tab Up	Standard	2.5G PoE+	-40 to 85°C
	2250150-1	1	1x1	Yes	Tab Up	Standard	2.5G PoE+	-40 to 85°C
	0854-2X4R-JD	8	2x4	No	Stacked	Standard	2.5G PoE+	-40 to 85°C
	0895-2B4J-JD	8	2x4	Yes	Stacked	Standard	2.5G PoE+	-40 to 85°C
2250345-1	8	2x4	Yes	Stacked	Standard	2.5G PoE+	-40 to 85°C	

10G PHYs

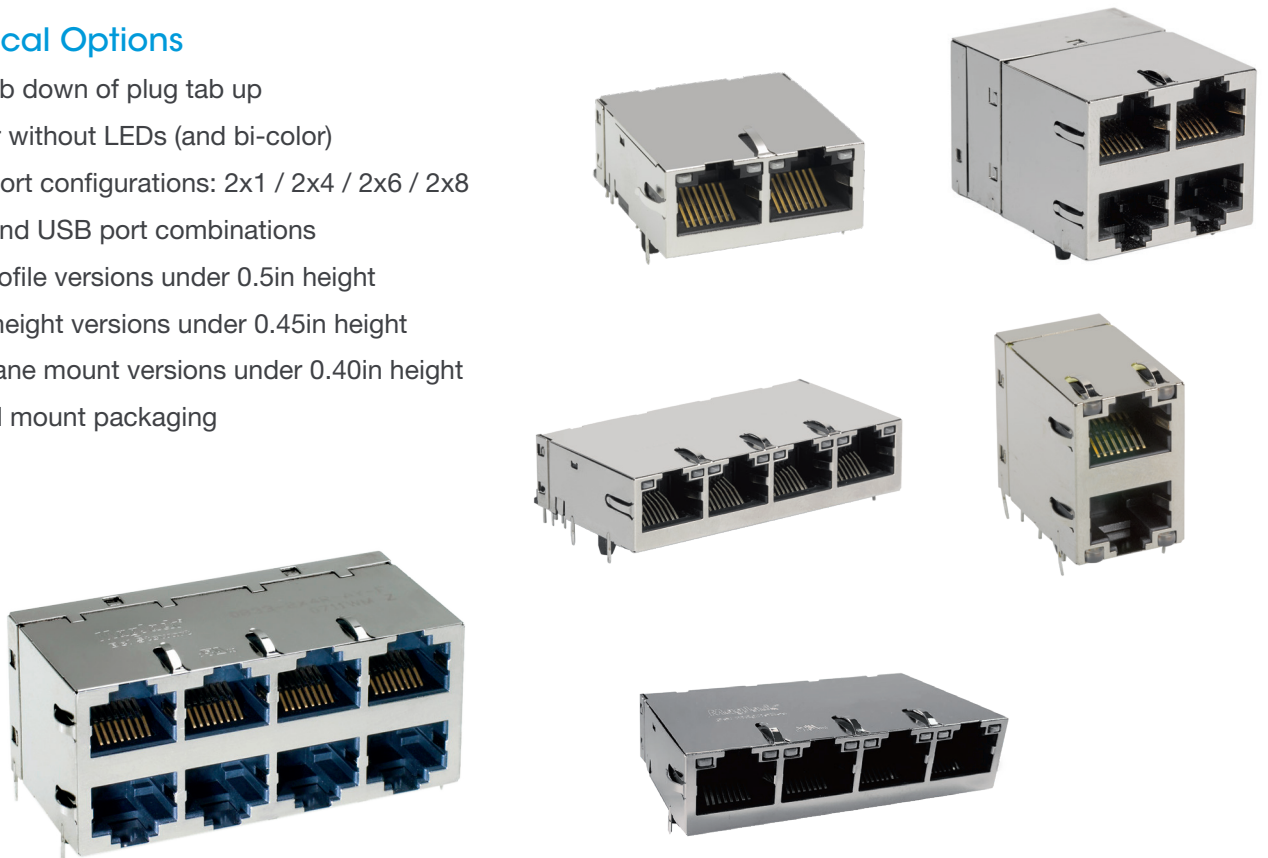
IC Part No.	Bel /TRP Part No.	No. Ports	Port Config.	LEDs	Port Orientation	Profile	Application	Operating Temperature
VSC8237	G10-1GHT-012E	1	1x1	Yes	Tab Down	Low Profile	10G	0 to 70°C
	2250128-1	1	1x1	Yes	Tab Down	Low Profile	10G	0 to 70°C

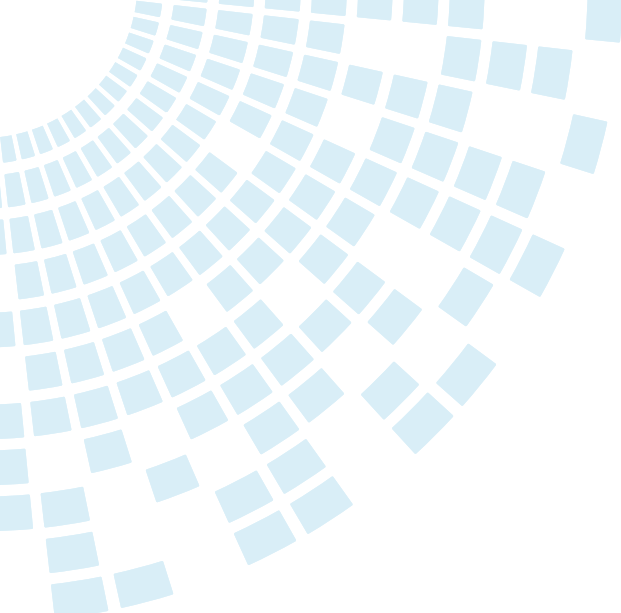
Applications

- 10/100 AutoMDIX
- 10/100/1000 Gigabit
- Power over Ethernet (PoE) options
- Extended temperature range of -40°C to +85°C
- Multi-rate 2.5G, 5G and 10G

Mechanical Options

- Plug tab down of plug tab up
- With or without LEDs (and bi-color)
- Multi-port configurations: 2x1 / 2x4 / 2x6 / 2x8
- RJ45 and USB port combinations
- Low profile versions under 0.5in height
- Micro height versions under 0.45in height
- Mid-plane mount versions under 0.40in height
- Vertical mount packaging





About Bel Magnetic Solutions

Bel Magnetic Solutions offer an extensive line of Integrated Connector Modules (ICM), where the Ethernet magnetics solution is integrated into a connector package. The ICM product line covers every Ethernet application in the market today. Our products include one of the broadest ranges of magnetic based solutions for high-speed networking and computer applications. ICMs cover a range of Ethernet speeds and technologies from 10/100Base-T, 1GBase-T, 10GBase-T, and Power over Ethernet (PoE).



For more information,
please contact us:

+1 858.676.9650
techhelp@belf.com
belfuse.com/magnetic-solutions